

**CHAMPION® 4 ELONGATED RIGHT HEIGHT™
ONE-PIECE TOILET**

2034.014

- Vitreous china
- EverClean® surface inhibits the growth of stain- and odor-causing bacteria, mold, and mildew on the surface
- Low-consumption (6.0 Lpf/1.6 gpf)
- Features **Champion® 4 Flushing System** performance platform
- 4" non-adjustable, piston action Accelerator™ flush valve
- 16-1/2" rim height for accessible applications
- Elongated siphon action jetted bowl
- 2-3/8" fully-glazed trapway
- Chrome trip lever
- 100% factory flush tested
- 2 bolt caps
- 10 year warranty



Nominal Dimensions:

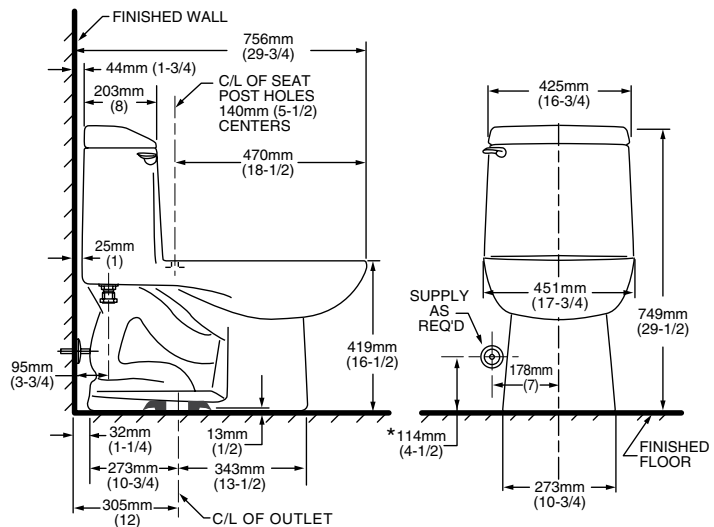
756 x 451 x 749mm
(29-3/4" x 17-3/4" x 29-1/2")

Fixture only, seat and supply by others

Compliance Certifications -

Meets or Exceeds the Following Specifications:

- ASME A112.19.2M for Vitreous China Fixtures- includes Flush Performance, Ball Pass Diameter, Trap Seal Depth and all Dimensions



To Be Specified:

- Color:
 - White
 - Bone
 - Silver
 - Linen
 - Black
- Trip Lever 738772-XXX0A:
 - 002 Chrome (supplied)
 - 068 Blackened Bronze
 - 099 Polished Brass
 - 295 Satin Nickel
- Seat:
 - Champion® Slow Close Elongated #5325.010
 - EverClean® Elongated Seat, with Cover and Slow Close Snap-Off Hinges #5321.110
- Supply with Stop (by other):

NOTES:

THIS TOILET IS DESIGNED TO ROUGH-IN AT A MINIMUM DIMENSION OF 305MM (12") FROM FINISHED WALL TO C/L OF OUTLET. SUPPLY NOT INCLUDED WITH FIXTURE AND MUST BE ORDERED SEPARATELY. * DIMENSION SHOWN FOR LOCATION OF SUPPLY IS SUGGESTED.

IMPORTANT: Dimensions of fixtures are nominal and may vary within the range of tolerances established by ANSI Standard A112.19.2. These measurements are subject to change or cancellation. No responsibility is assumed for use of superseded or voided pages.

MEETS THE AMERICANS WITH DISABILITIES ACT GUIDELINES AND ANSI A117.1 REQUIREMENTS FOR ACCESSIBLE AND USABLE BUILDING FACILITIES-CHECK LOCAL CODES.

- When installed, top of seat meets minimum requirement of 432 to 483mm (17" to 19") from the finished floor.

CHAMPION® 4
Flushing System