

6042HWWP – EVERYDAY BATHS

inches (mm)

60 x 42 x 25 (1525 x 1070 x 635) • Fax on Demand #5073

SOAKER MODEL #6042HW

WHIRLPOOL MODEL #6042HWWP



FEATURES

- Alcove bath
- Integral arm rests
- Ergonomic backrest
- Integral tiling flange (3T)
- Integral skirt
- Slip-resistant textured bottom
- 8" wainscot
- Left or right hand drain
- Gelcoat surface
- 5-year limited warranty

Whirlpool Features:

- .75hp motor
- 6 adjusta-flow whirlpool jets
- Color matched or clear trim
- 2 air controls
- Pneumatic on/off control
- Advanced safety suction system

OPTIONS

- In-line heater (whirlpool models)
- Removable access panel (whirlpool models)
- Mood light (whirlpool models)
- Designer drain, waste & overflow

AQUATIC ADVANTAGE

- National distribution
- 5 manufacturing facilities
- Private fleet
- Centralized customer service
- Field support
- 24-hour fax-on-demand

COLOR & TRIM OPTIONS

Stock	Premium
Almond (C)	Black (C)
Biscuit (C)	Mexican Sand* (NA)
Bone (C)	Sand Bar* (NA)
Linen (C)	
Sterling Silver (C)	
White (C)	

C = color matched trim

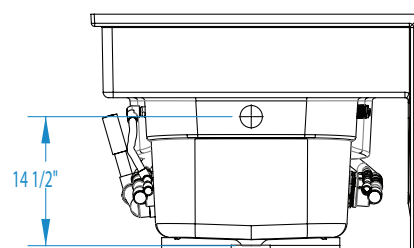
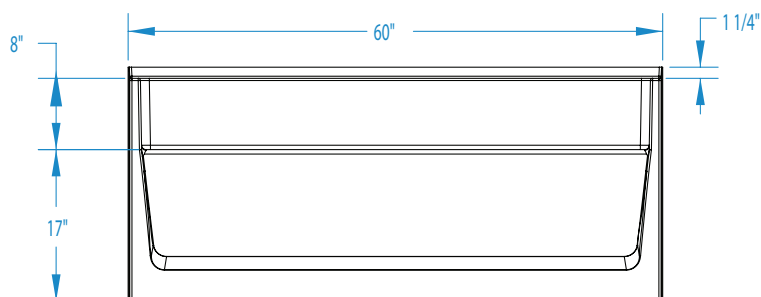
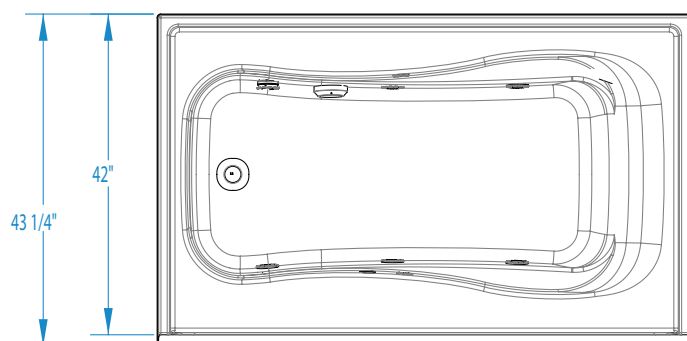
NA = not applicable

* color not available for whirlpool models



6042HWWP

60 x 42 x 25 (1525 x 1070 x 635)
inches (mm)



FEATURES lbs (kg) Dimensional Tolerance $\pm \frac{3}{8}$ ". Dimensions needed for site preparation should be measured from the unit. Aquatic assumes no responsibility for preparatory work.

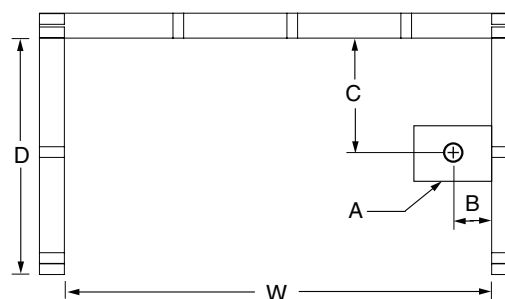
Model #	Material	Jets	Motor	Controls	Drain	Net Wt.	Pkg. Wt.
Soaker #6042HW	Gelcoat	0	-	-	LH or RH	81 (37)	86 (39)
Whirlpool #6042HWWP	Gelcoat	6	0.75 HP	Pneumatic	LH or RH	131 (59)	136 (62)

DIMENSIONS

Specifications	inches (mm)
Width: Overall / Net	60 (1525)
Depth: Overall / Net	43 1/4 (1100) / 42 (1070)
Height: Overall / Net	26 1/4 (665) / 25 (635)
Enclosure Opening	57 (1450)
Skirt Height	17 (430)
Drain Rough-In (from Back Wall)	21 (535)
Drain Rough-In (from Side Wall)	2 1/4 (55)
Drain: Diameter / Clearance	2 (50) / 3/4 (20)

FRAMING DIMENSIONS inches (mm)

Type	D Depth	W Width	H Height	A	B	C
Alcove	43 1/4 (1100)	60 1/8 (1525)	16 3/4 (425)	Box Out	2 1/4 (55)	21 (535)



SUMP DATA

Top of Drain to Bottom of Overflow	Capacity to Overflow gal (ltr)	Min. Operating Capacity gal (ltr)	WIDTH @ centerline		DEPTH @ centerline	
			Top	Bottom	Top	Bottom
12 1/2 (320)	65 (246)	50 (189)	54 (1370)	44 (1120)	26 (660)	23 (585)