

# 2603OT – EVERYDAY BATHS

inches (mm)

60 x 40<sup>3</sup>/<sub>4</sub> x 21 (1525 x 1035 x 535) • Fax on Demand #1099



## FEATURES

- Alcove bath
- Integral tiling flange (3T)
- Integral skirt
- 6" wainscot
- Molded toiletry shelves
- Slip-resistant textured bottom
- Center rear drain
- Gelcoat surface
- 5-year limited warranty

## OPTIONS

- Designer drain, waste & overflow

### AQUATIC ADVANTAGE

- National distribution
- 5 manufacturing facilities
- Private fleet
- Centralized customer service
- Field support
- 24-hour fax-on-demand

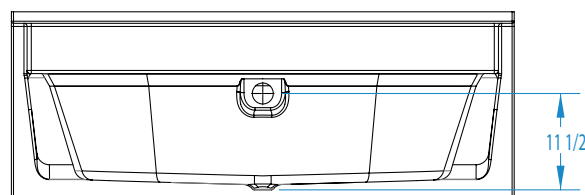
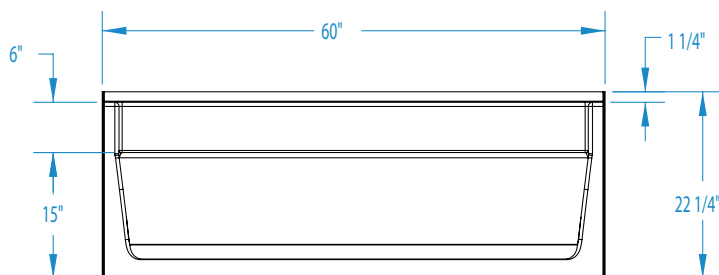
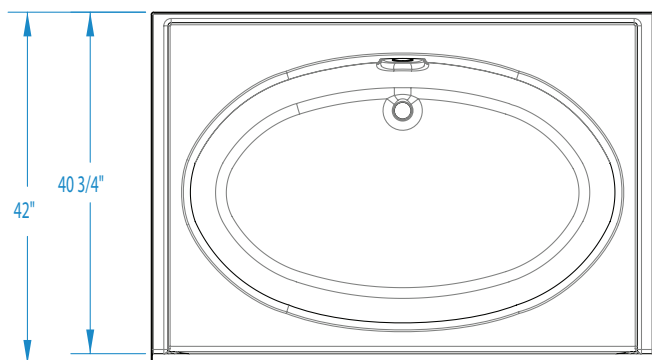
### COLOR & TRIM OPTIONS

Stock	Premium
Almond	Black
Biscuit	Mexican Sand
Bone	Sand Bar
Linen	
Sterling Silver	
White	



# 2603OT

60 x 40<sup>3</sup>/<sub>4</sub> x 21 (1525 x 1035 x 535)  
inches (mm)



**FEATURES** lbs (kg) Dimensional Tolerance ± 3/8". Dimensions needed for site preparation should be measured from the unit. Aquatic assumes no responsibility for preparatory work.

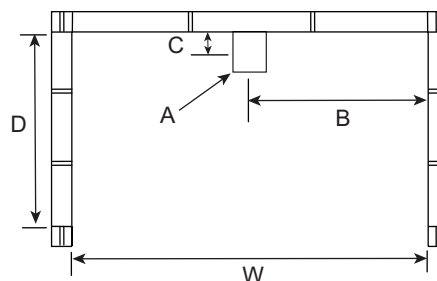
Model #	Material	Jets	Motor	Controls	Drain	Net Wt.	Pkg. Wt.
Soaker #2603OT	Gelcoat	-	-	-	Center rear drain	70 (32)	80 (36)

## DIMENSIONS

Specifications	inches (mm)
Width: Overall / Net	60 (1525)
Depth: Overall / Net	42 (1070) / 40 3/4 (1035)
Height: Overall / Net	22 1/4 (565) / 21 (535)
Enclosure Opening	56 (1420)
Skirt Height	15 (380)
Drain Rough-In (from Back Wall)	2 (50)
Drain Rough-In (from Side Wall)	30 (760)
Drain: Diameter / Clearance	2 (50) / 1 (25)

## FRAMING DIMENSIONS inches (mm)

Type	D Depth	W Width	H Height	A	B	C
Alcove	42 (1070)	60 1/8 (1525)	-	Box Out	30 (760)	2 (50)



## SUMP DATA

Top of Drain to Bottom of Overflow	Capacity to Overflow gal (ltr)	Min. Operating Capacity gal (ltr)	WIDTH @ centerline		DEPTH @ centerline	
			Top	Bottom	Top	Bottom
9 1/8 (230)	46 (174)	-	52 1/2 (1335)	44 3/4 (1135)	33 (840)	25 (635)