

6042BWCMWP – EVERYDAY BATHS

inches (mm)

60 x 34-42 x 26 ½ (1525 x 865-1065 x 675) • Fax on Demand #1244

SOAKER MODEL #6042BWCM

WHIRLPOOL MODEL #6042BWCMWP



FEATURES

- Alcove bath
- Integral tiling flange (3T)
- 6 ½" wainscot
- Integral bowed skirt
- Integral toiletry shelves
- Extra large bathing well
- Ergonomic backrest
- Above-floor rough
- Slip-resistant textured bottom
- Center rear drain
- Gelcoat surface
- 5-year limited warranty

Whirlpool Features:

- .75hp motor
- 6 adjusta-flow whirlpool jets
- Color matched or clear trim
- Pneumatic on/off control
- Advanced safety suction system

AQUATIC ADVANTAGE

- National distribution
- 5 manufacturing facilities
- Private fleet
- Centralized customer service
- Field support
- 24-hour fax-on-demand

COLOR & TRIM OPTIONS

Stock	Premium
Almond (C)	Black (C)
Biscuit (C)	Mexican Sand* (NA)
Bone (C)	Sand Bar* (NA)
Linen (C)	
Sterling Silver (C)	
White (C)	

C = color matched trim

NA = not applicable

* color not available for whirlpool models

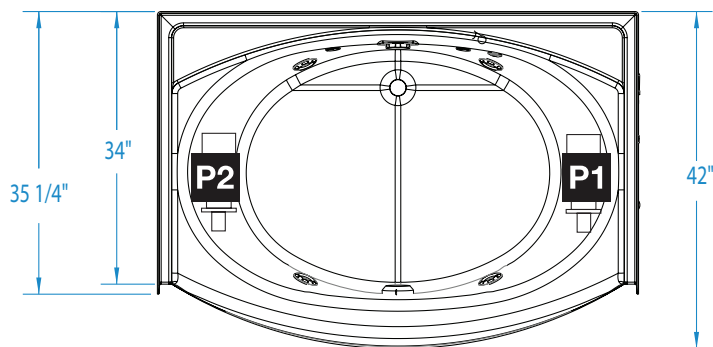
OPTIONS

- In-line heater (whirlpool models)
- Mood light (whirlpool models)
- Designer drain, waste & overflow

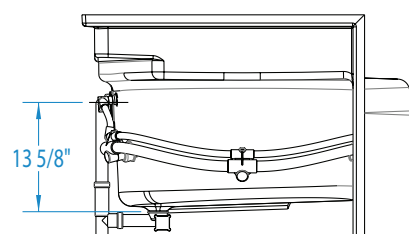
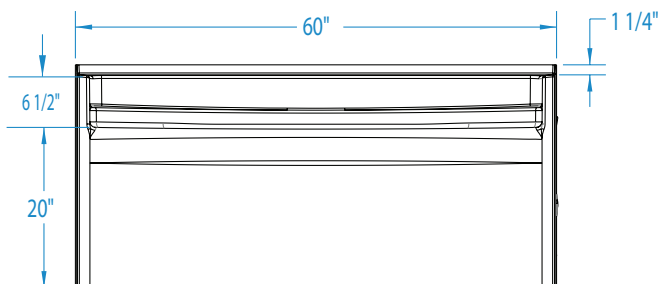


6042BWCMWP

60 x 34-42 x 26 1/2 (1525 x 865-1065 x 675)
inches (mm)



AFR: Allows for above the floor installation of waste, overflow and drainage.



FEATURES lbs (kg) Dimensional Tolerance ± 3/16". Dimensions needed for site preparation should be measured from the unit. Aquatic assumes no responsibility for preparatory work.

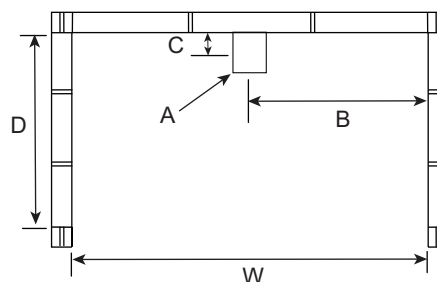
Model #	Material	Jets	Motor	Controls	Drain	Net Wt.	Pkg. Wt.
AFR Soaker #6042BWCM	Gelcoat	-	-	-	Center Rear	87 (39)	95 (43)
AFR Whirlpool #6042BWCMWP	Gelcoat	4	0.75 HP	Pneumatic	Center Rear	130 (59)	140 (64)

DIMENSIONS

Specifications	inches (mm)
Width: Overall / Net	60 (1525)
Depth: Overall / Net	35 1/4 (895) / 34-42 (865-1065)
Height: Overall / Net	27 3/4 (705) / 26 1/2 (675)
Enclosure Opening	56 1/2 (1435)
Skirt Height	20 (510)
Drain Rough-In (from Back Wall)	2 1/2 (65)
Drain Rough-In (from Side Wall)	30 (760)
Drain: Diameter / Clearance	2 (50) / 3 1/4 (80)

FRAMING DIMENSIONS inches (mm)

Type	D Depth	W Width	H Height	A	B	C
Alcove	35 1/4 (895)	60 1/8 (1525)	25 5/8 (650)	Box Out	30 (760)	2 1/2 (65)



SUMP DATA

Top of Drain to Bottom of Overflow	Capacity to Overflow gal (ltr)	Min. Operating Capacity gal (ltr)	WIDTH @ centerline		DEPTH @ centerline	
			Top	Bottom	Top	Bottom
12 3/8 (315)	53 1/2 (200)	48 1/2 (1230)	52 1/2 (1335)	40 5/8 (1030)	34 1/2 (875)	30 1/2 (775)