

GARDENIA I – EVERYDAY BATHS

inches (mm)

54 ¼ x 41 x 23 ⅛ (1380 x 1040 x 585) • Fax on Demand #5054

SOAKER MODEL #2354410

WHIRLPOOL MODEL #2354411



FEATURES

- Garden tub
- Integral tiling flange (3T)
- 6-1/2" wainscot
- Ergonomic backrest
- Integral skirt
- Slip-resistant textured bottom
- Center rear drain
- Gelcoat surface
- 5-year limited warranty

Whirlpool Features:

- .75hp motor
- 4 adjusta-flow whirlpool jets
- Color matched or clear trim
- Pneumatic on/off control
- Advanced safety suction system

OPTIONS

- In-line heater (whirlpool models)
- Mood light (whirlpool models)
- Designer drain, waste & overflow

AQUATIC ADVANTAGE

- National distribution
- 5 manufacturing facilities
- Private fleet
- Centralized customer service
- Field support
- 24-hour fax-on-demand

COLOR & TRIM OPTIONS

| Stock | Premium |
|---------------------|--------------------|
| Almond (C) | Black (C) |
| Biscuit (C) | Mexican Sand* (NA) |
| Bone (C) | Sand Bar* (NA) |
| Linen (C) | |
| Sterling Silver (C) | |
| White (C) | |

C = color matched trim

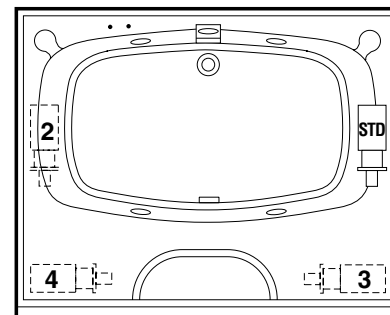
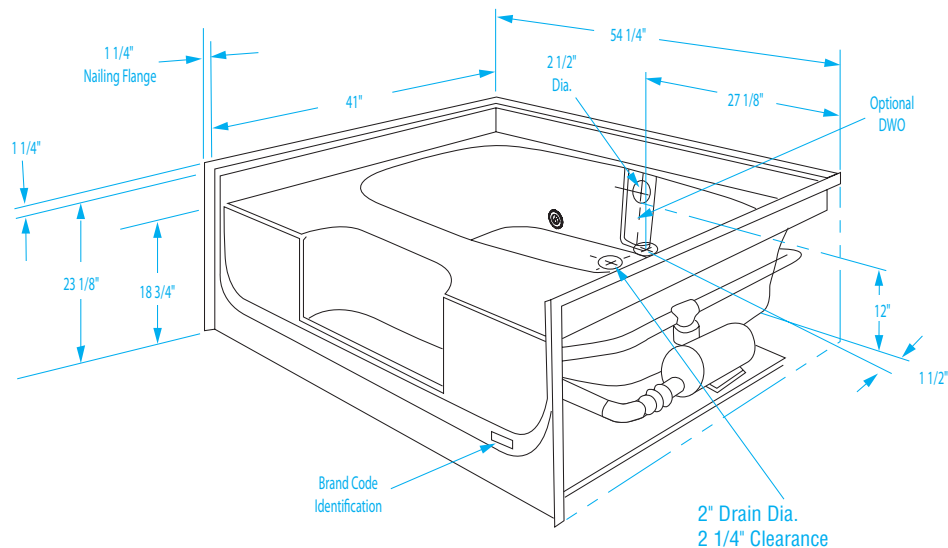
NA = not applicable

* color not available for whirlpool models



GARDENIA I

54 1/4 x 41 x 23 1/8 (1380 x 1040 x 585)
inches (mm)



FEATURES lbs (kg) Dimensional Tolerance $\pm 3/8"$. Dimensions needed for site preparation should be measured from the unit. Aquatic assumes no responsibility for preparatory work.

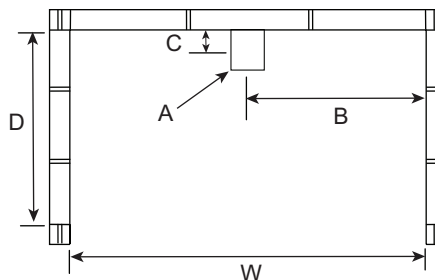
| Model # | Material | Jets | Motor | Controls | Drain | Net Wt. | Pkg. Wt. |
|--------------------|----------|------|---------|-----------|-------------|----------|----------|
| Soaker #2354410 | Gelcoat | - | - | - | Center Rear | 137 (62) | 147 (66) |
| Whirlpool #2354411 | Gelcoat | 4 | 0.75 HP | Pneumatic | Center Rear | 137 (62) | 147 (66) |

DIMENSIONS

| Specifications | inches (mm) |
|---------------------------------|-----------------------------|
| Width: Overall / Net | 54 1/4 (1380) |
| Depth: Overall / Net | 42 1/4 (1075) / 41 (1040) |
| Height: Overall / Net | 24 3/8 (620) / 23 1/8 (585) |
| Enclosure Opening | 50 1/4 (1280) |
| Skirt Height | 18 3/4 (475) |
| Drain Rough-In (from Back Wall) | 1 1/2 (40) |
| Drain Rough-In (from Side Wall) | 27 1/8 (690) |
| Drain: Diameter / Clearance | 2 (50) / 2 1/4 (55) |

FRAMING DIMENSIONS inches (mm)

| Type | D Depth | W Width | H Height | A | B | C |
|--------|---------------|---------------|--------------|---------|--------------|------------|
| Alcove | 42 1/4 (1075) | 54 3/8 (1380) | 22 7/8 (580) | Box Out | 27 1/8 (690) | 1 1/2 (40) |



SUMP DATA

| Top of Drain to Bottom of Overflow | Capacity to Overflow gal (ltr) | Min. Operating Capacity gal (ltr) | WIDTH @ centerline | | DEPTH @ centerline | |
|------------------------------------|--------------------------------|-----------------------------------|--------------------|---------------|--------------------|--------------|
| | | | Top | Bottom | Top | Bottom |
| 12 (305) | 57 (217) | 44 (167) | 50 1/4 (1275) | 47 3/4 (1215) | 25 (635) | 22 1/2 (570) |