



# COMMERCIAL HEAVY-DUTY PLASTIC TOILET SEAT



MODEL #

COLOR #

## 1900/1900SS

### DESCRIPTION:

Closed front with cover, elongated, heavy-duty, injection molded solid plastic toilet seat. Features four molded-in bumpers, color-matched Top-Tite® hinges with non-corrosive, top-tightening Hex-Tite™ bolts and wing nuts (1900) or non-corrosive 300 Series stainless steel self-sustaining hinges (1900SS). This seat complies with American National Standard Z124.5 Toilet (Water Closet) Seats as a class Commercial Heavy Duty.

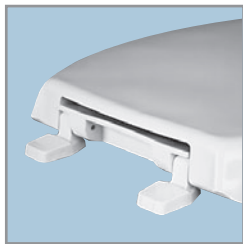
### SPECIFICATIONS:

Size:	Elongated
Material:	Plastic
Style:	Closed Front with Cover
Bumpers:	Four
Hinges:	Plastic Top-Tite® (1900) or 300 Series Stainless Steel Self-Sustaining (1900SS)
Fastening System:	Non-Corrosive Hex-Tite™ Bolts and Wing Nuts (1900) or 300 Series Stainless Steel Hardware (1900SS)

### FEATURES:

Top-Tite® (1900) or 300 Series Stainless Steel Self Sustaining (1900SS) Hinges

Non-Corrosive Hex-Tite™ Bolts and Wing Nuts (1900) or 300 Series Stainless Steel Hardware (1900SS)



TOP-TITE® HINGES (1900)



NON-CORROSIVE BOLTS AND WING NUTS (1900)



300 SERIES STAINLESS STEEL SELF-SUSTAINING HINGES (1900SS)

### DIMENSIONS:

