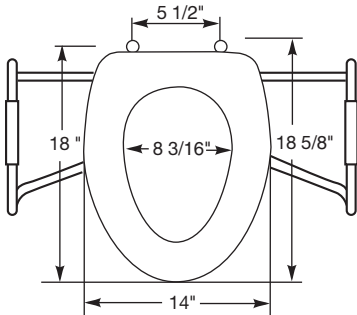
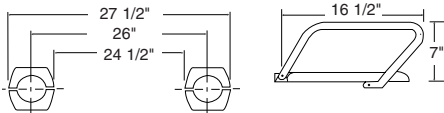




DuraGuard®
ANTIMICROBIAL



Ring thickness is 3/4"
Ring thickness including the bumper is 1-1/16"
Height of the seat with cover is 2-1/4"



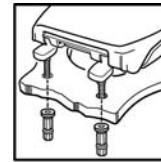
M E D I C - A I D ® S E A T S

MODEL MA2100T

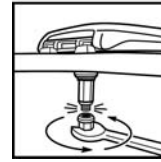
- ELONGATED SEAT, CLOSED FRONT WITH COVER
- HEAVY DUTY PLASTIC
- DURAGUARD® ANTIMICROBIAL AGENT
- STAINLESS STEEL SIDE ARMS
- STA-TITE®, COMMERCIAL FASTENING SYSTEM™

Seats shall be No. MA2100T as manufactured by Church Seats. Seats shall be closed front with cover for elongated bowl and injection molded of heavy duty solid plastic. Seats shall contain DuraGuard®, an antimicrobial agent. Factory-assembled "Safety-Side" arms shall be heavy-duty stainless steel and feature textured plastic handgrips with finger grooves. Seat shall feature large molded-in bumpers. Seats shall have STA-TITE®, Commercial Fastening System™, featuring 300 Series stainless steel posts and pintles. Color to be white.

STATITE®



Finger-tighten fastening nuts.



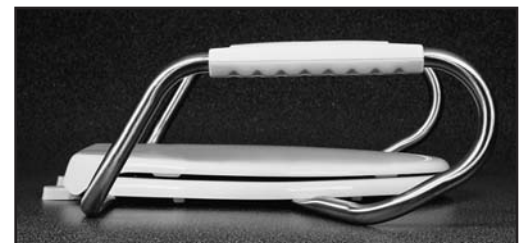
Using wrench, tighten until lower portion shears off.



STA-TITE®, COMMERCIAL FASTENING SYSTEM™, ONE-PIECE INTEGRATED NUT AND WASHER



EXTERNAL CHECK HINGE WITH 300 SERIES STAINLESS STEEL BOLTS



HEAVY DUTY "SAFETY SIDE" ARMS WITH TEXTURED HANDGRIPS