



a Geberit company

2100 South Clearwater Drive
Des Plaines, IL 60018
Phone: 847-803-5000
Fax: 847-803-5454
www.chicagofaucets.com

REPAIR PARTS

BY: JAR DATE: 08-30-11

CHK: *[Signature]* REV: 01-08-13

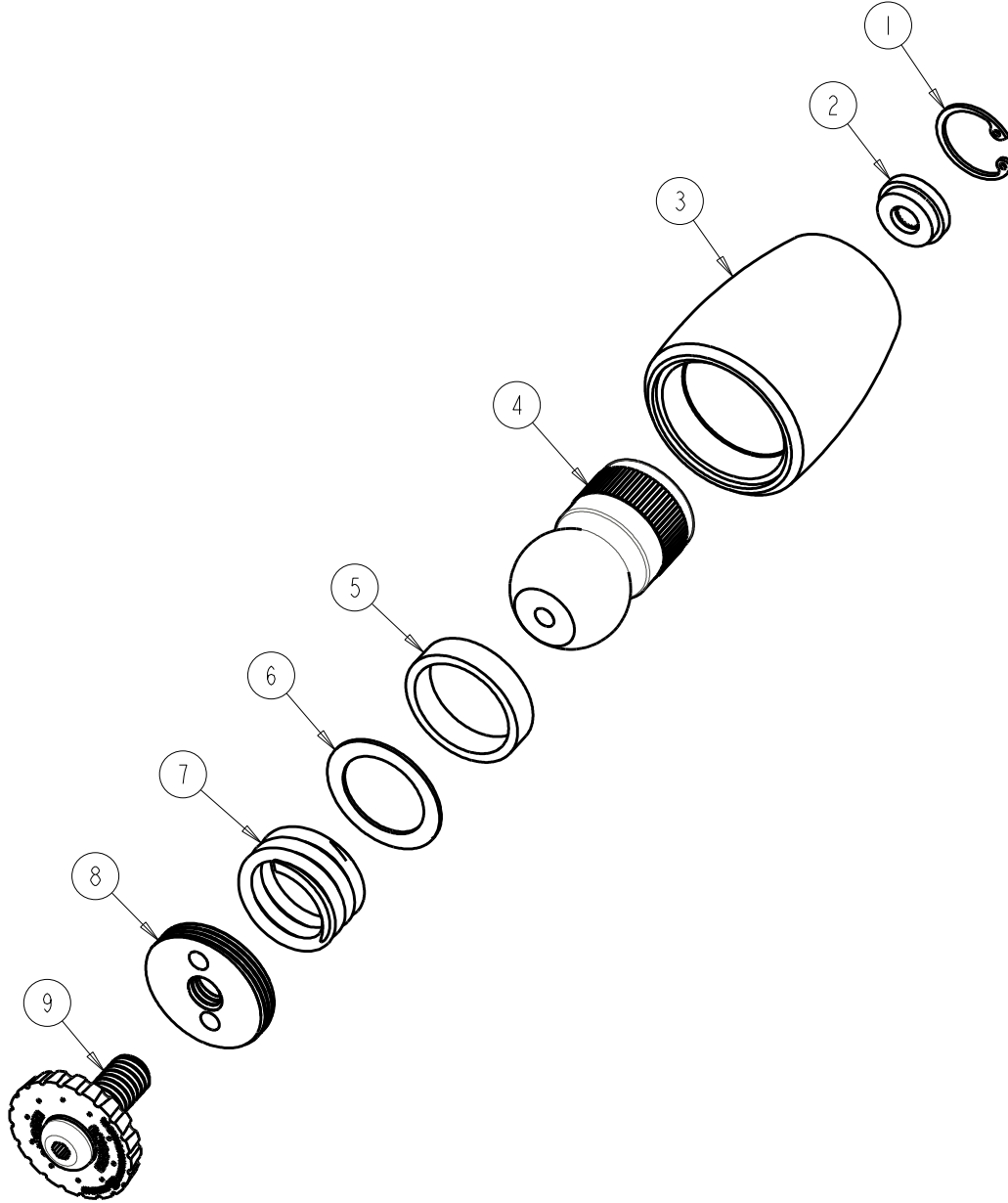
FITTING NO.

620-LCP

SUBMITTED MODEL NO.

ITEM NO.

FOR TECHNICAL ASSISTANCE
1-800-TEC-TRUE (1-800-832-8783)



ITEM	PART NO.	DESCRIPTION
1	-----	INTERNAL RETAINING RING
2	-----	FLOW REGULATOR, 1.5 GPM MAX
3	-----	SHOWER BODY (NOT SOLD SEPARATELY)
4	-----	SHOWER BALL (NOT SOLD SEPARATELY)
5	620-138JKNF	RUBBER WASHER
6	620-039JKRBF	BRASS WASHER
7	620-041JKNF	COMPRESSION SPRING
8	620-140JKNF	RETAINER
9	620-040KJKRCF	FACE SPRAY 1.5 GPM