

**CHICAGO FAUCETS**

a Geberit company

**FOR TECHNICAL ASSISTANCE**  
1-800-TEC-TRUE (1-800-832-8783)

2100 South Clearwater Drive  
Des Plaines, IL 60018  
Phone: 847-803-5000  
Fax: 847-803-5454  
www.chicagofaucets.com

**REPAIR PARTS**

BY: SID DATE: 11-16-11

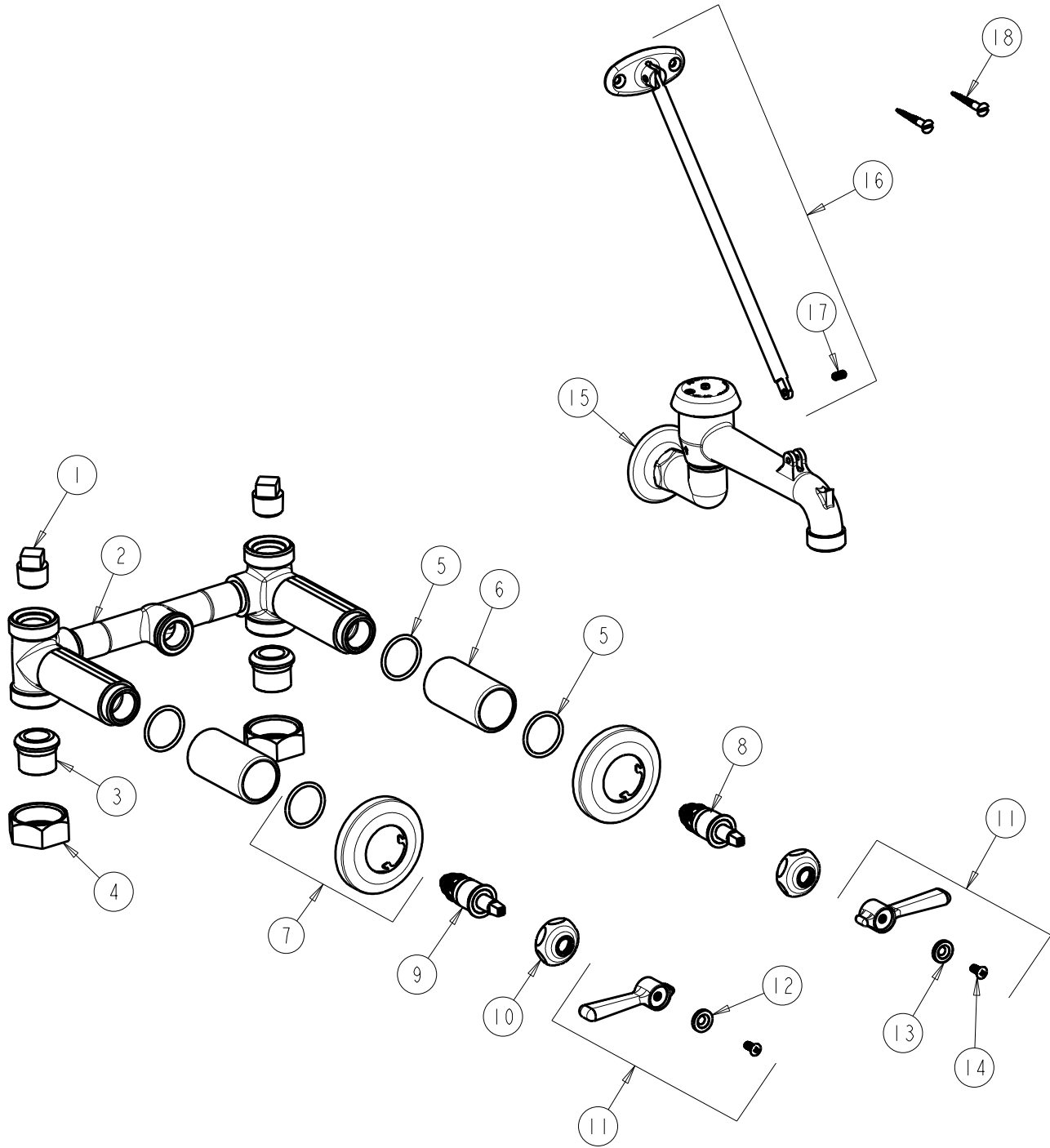
CHK: *[Signature]* REV:

FITTING NO.

**782-VB369CP**

SUBMITTED MODEL NO.

ITEM NO.



ITEM	PART NO.	DESCRIPTION	ITEM	PART NO.	DESCRIPTION
1	234-032JKRCF	1/2 NPT PLUG	10	1-214JKCP	CAP
2	—	VALVE BODY (NOT SOLD SEPARATELY)	11	369-PRJKCP	LEVER HANDLE ASSEMBLY (PAIR)
3	177-003JKCP	UNION TAILPIECE	12	633-023JKNF	INDEX BUTTON (RED)
4	177-002JKCP	UNION NUT	13	633-123JKNF	INDEX BUTTON (BLUE)
5	5235-107JKNF	O-RING	14	420-010JKRCF	SCREW, 10-32 UNC PH 1/2
6	5235-106JKCP	SLEEVE	15	782-001KVBKCP	NOT SOLD SEPARATELY
7	633-201JKCP	FLANGE & O-RING	16	897-013KJKCP	BRACE ROD ASSEMBLY
8	217-XTRHJKNF	CARTRIDGE, SLO-COMPRESSION (RH)	17	665-116JKNF	SET SCREW
9	217-XTLHJKNF	CARTRIDGE, SLO-COMPRESSION (LH)	18	173-006JKCP	FLAT HEAD WOOD SCREW