

CHICAGO FAUCETS
a Geberit company

2100 South Clearwater Drive
Des Plaines, IL 60018
Phone: 847-803-5000
Fax: 847-803-5454
www.chicagofaucets.com

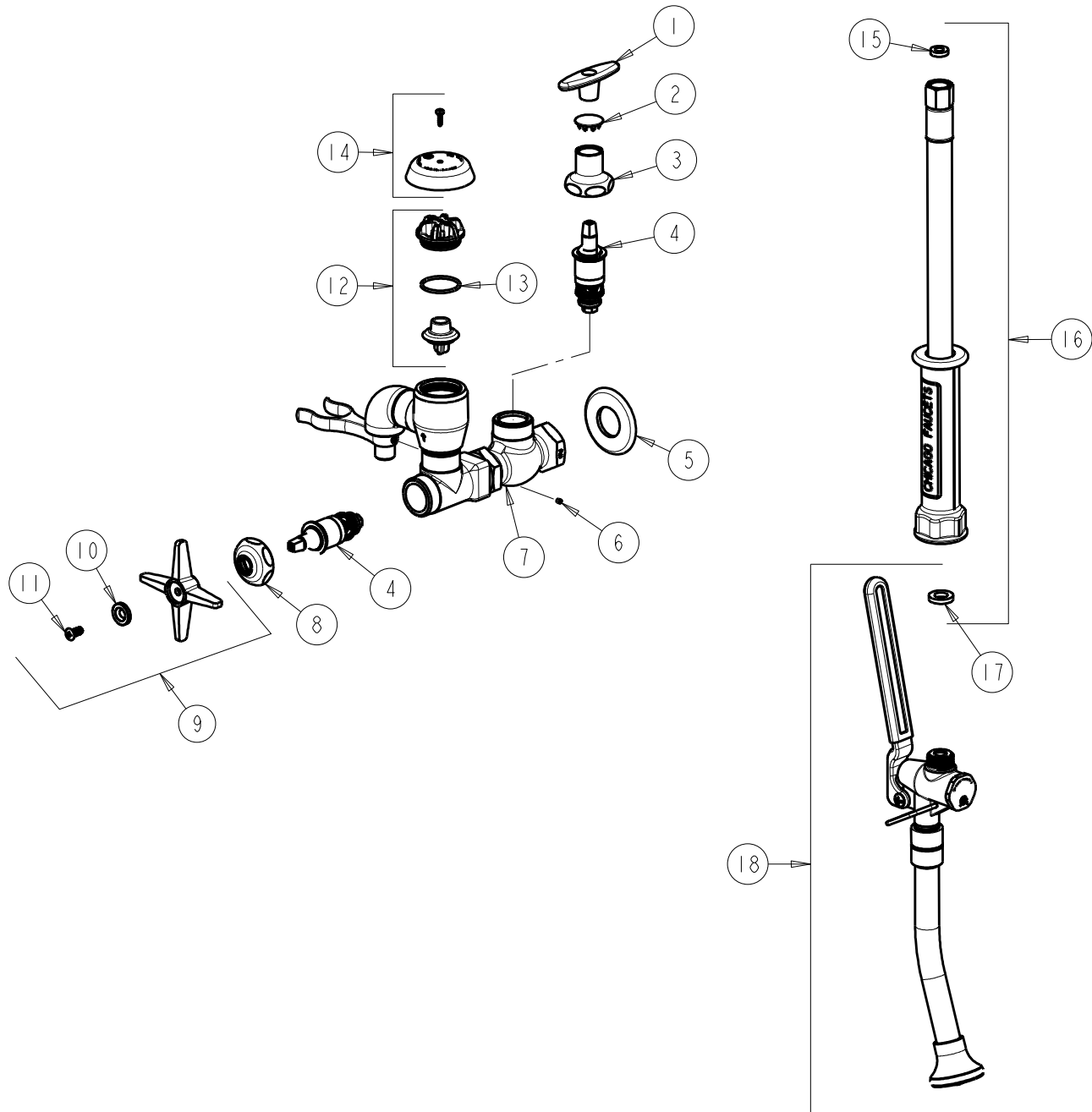
REPAIR PARTS

BY: JAR DATE: 05-11-05
CHK: [Signature] REV: 08-08-11

FITTING NO.
809-777-21KCP
SUBMITTED MODEL NO.

FOR TECHNICAL ASSISTANCE
1-800-TEC-TRUE (1-800-832-8783)

ITEM NO.



ITEM	PART NO.	DESCRIPTION	ITEM	PART NO.	DESCRIPTION
1	293-006JKRCF	TEE HANDLE & SCREW	10	633-123JKNF	INDEX BUTTON (BLUE)
2	1-144JKCP	BUTTON	11	420-010JKRCF	SCREW, 10-32 UNC PH 1/2
3	1-246JKCP	NUT, CAP LOOSE KEY 1-1/8-18 UNEF	12	892-302KJKNF	VACUUM BREAKER REPAIR KIT
4	217-XTLHJKNF	CARTRIDGE, SLO-COMPRESSION	13	80-007JKNF	O RING 0.989 X .070
5	417-019JKCP	FLANGE, 1.94 X .88 X .11	14	892-254KJKCP	VACUUM BREAKER COVER w/SCREW
6	777-013JKNF	SCREW, SET 6-32 X 1/8	15	739-051JKNF	GASKET, 1/2 X 1/4 X 1/8
7	---	VALVE BODY (NOT SOLD SEPARATELY)	16	739-053KJKNF	HOSE, WHITE VINYL 53" W/ WASHERS
8	1-214JKCP	CAP	17	919-243JKNF	GASKET, .685 X .375 X .125
9	633-COLDJKCP	4-ARM CROSS HANDLE ASSEMBLY	18	777-021KJKCP	FOR PARTS SEE 777-021KJKCP