



## Electronic Showers

Battery Operated (861T1) - Push button electronic shower system

### Model No: 861T167

#### COMPLIES WITH:

- CSA certified
- ASME A112.18.1/CSA B125.1
- (Contact Delta Representative for State and/or Local Approvals)
- Control / Sensor Box Option 7, Pressure Balancing Valve, meets ASSE 1016.



#### SPECIFICATION:

- Push button electronic shower system
- Metal cover with S/S vandal resistant mounting screws
- Metal mounting box
- Field adjustable shower time
- Slow closing solenoid valve
- Integral stop
- Battery - 4 AA 6 VDC
- 30° Vandal Resistant, Cast Wallmount Showerhead, 1.5 USGPM (5.7 L/min)
- Vandal Resistant Recessed Mounted 10 x 10" box for push button activator, solenoid valve, driver board and PRESSURE BALANCE MIXING VALVE.

#### OPERATION:

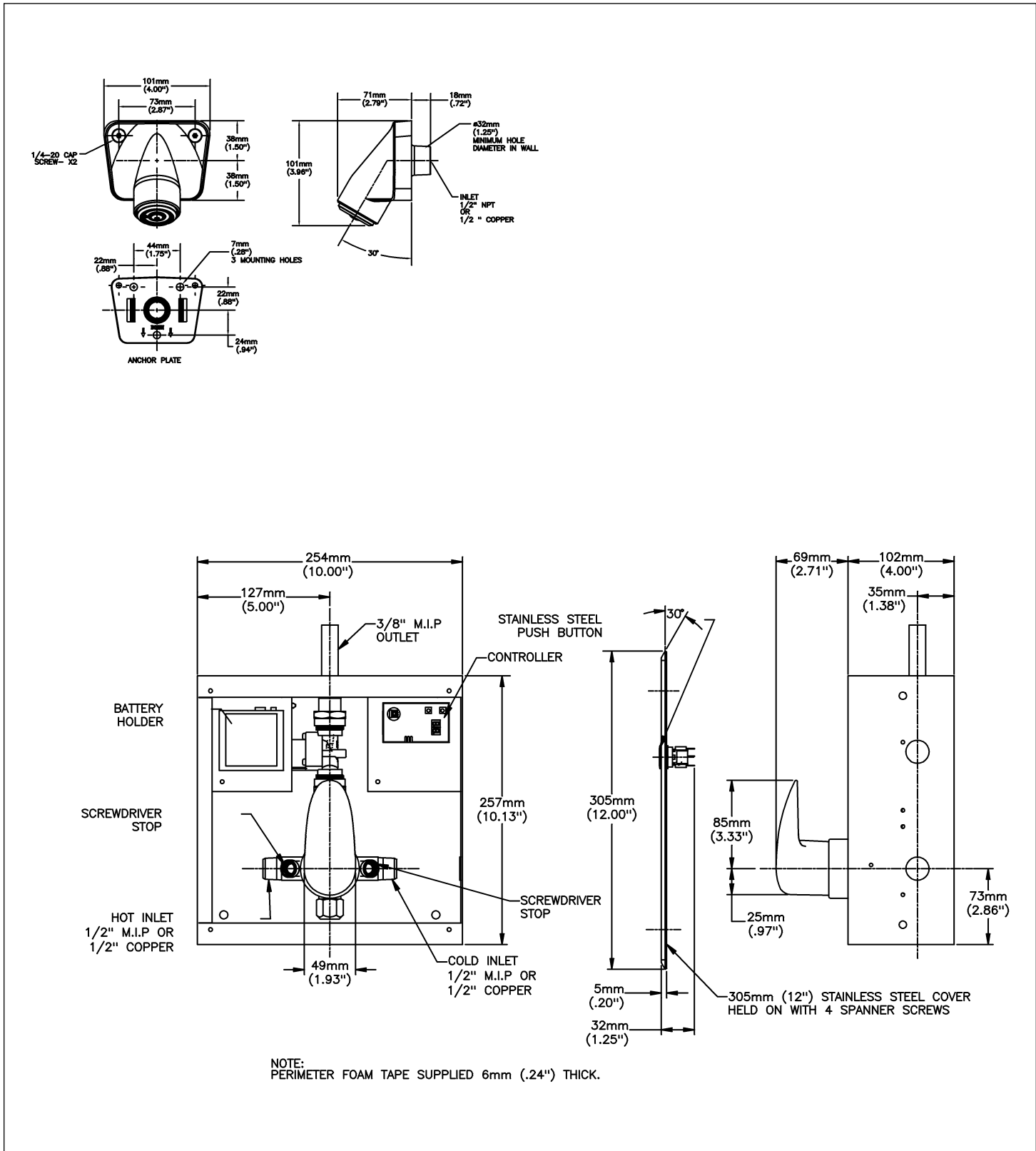
- Shower flows when push button is activated.
- Adjustable maximum continuous run time 10 minutes.
- Factory set to 3 minutes

***(Dimensional drawing on following page)***

Delta reserves the right (1) to make changes to specifications and materials, and (2) to change or discontinue models, both without notice or obligation. Dimensions are for reference. Measurement may vary plus or minus 6mm(0.25"). Mounting locations are suggested only. Check with local codes for requirements in your area. This spec was produced April 09, 2012.

Delta Faucet Company - 55 East 111th St. - Indianapolis, Indiana, USA 46280 - (317) 848-1812  
Delta Faucet Canada - 395 Matheson Blvd E - Mississauga, Ontario, Canada L4Z 2H2 - (905) 712-3030

Model No: 861T167



Delta reserves the right (1) to make changes to specifications and materials, and (2) to change or discontinue models, both without notice or obligation. Dimensions are for reference. Measurement may vary plus or minus 6mm(0.25"). Mounting locations are suggested only. Check with local codes for requirements in your area. This spec was produced April 09, 2012.

Delta Faucet Company - 55 East 111th St. - Indianapolis, Indiana, USA 46280 - (317) 848-1812  
 Delta Faucet Canada - 395 Matheson Blvd E - Mississauga, Ontario, Canada L4Z 2H2 - (905) 712-3030