



4453-DST

Submitted Model No.:

Specific Features:



KITCHEN FAUCETS

- Linden™ Series
- Single Handle Deck Mount
- 1, 2, 3 or 4 Hole Sink Applications
- DIAMOND™ Seal Technology
- Integrated Supply Tubes
- Quick Snap® Vegetable Sprayer Hose Installation

STANDARD SPECIFICATIONS:

- Single handle kitchen faucets for exposed mounting on 1, 2, 3 and 4 hole sinks.
- Centermount or 8" (203 mm) centers with optional 10 1/2" (267 mm) long escutcheon included.
- 8" (203 mm) high, 9 13/16" (249 mm) long spout nestled in metal hub assembly, swings 120°.
- Quick Snap® vegetable sprayer hose with matching finish sprayhead - 45" (1143mm) long hose.
- Lever handle shall return to neutral position when valve is turned off.
- Control mechanism shall be the diamond coated ceramic cartridge.
- Red/blue graphics on handle button to indicate hot/cold temperature.
- 3/8" O.D. straight, staggered pex supply tubes - 32 1/4" (819 mm) and 33 3/4" (857 mm) long.
- Standard 3/8" (10 mm) compression gasket fittings.
- Maximum flow rate 1.5 gpm @ 60 PSI.

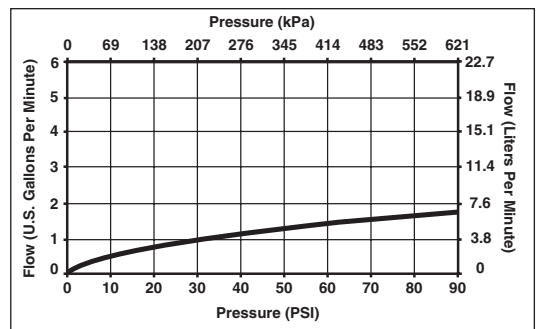
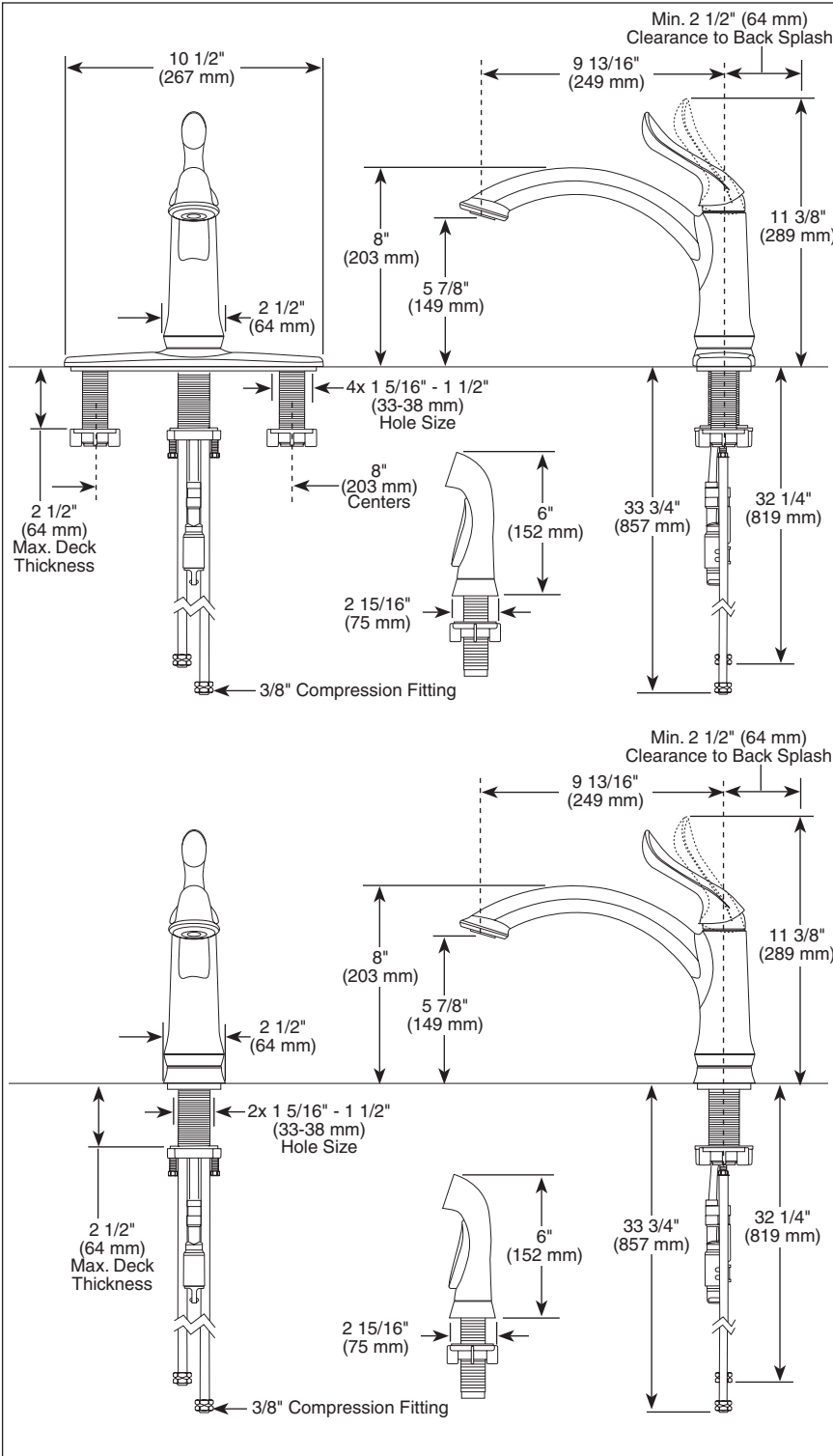
WARRANTY

- Lifetime Faucet and Finish Limited Warranty to the original consumer purchaser to be free from defects in material and workmanship.
- 5 Year Limited Warranty for usage in all industrial, commercial and business applications.



COMPLIES WITH:

- ASME A112.18.1 / CSA B125.1
- Indicates compliance to ICC/ANSI A117.1



▲ Designate Proper Finish Suffix

Delta reserves the right (1) to make changes in specifications and materials, and (2) to change or discontinue models, both without notice or obligation. Dimensions are for reference only. See full-line price book or www.specselect.com for finish options and product availability. DSP-K-4453-DST Rev. A



55 E. 111th Street, Indianapolis, Indiana 46280
395 Matheson Blvd. E., Mississauga, On L4Z 2H2
© 2009 Masco Corporation of Indiana