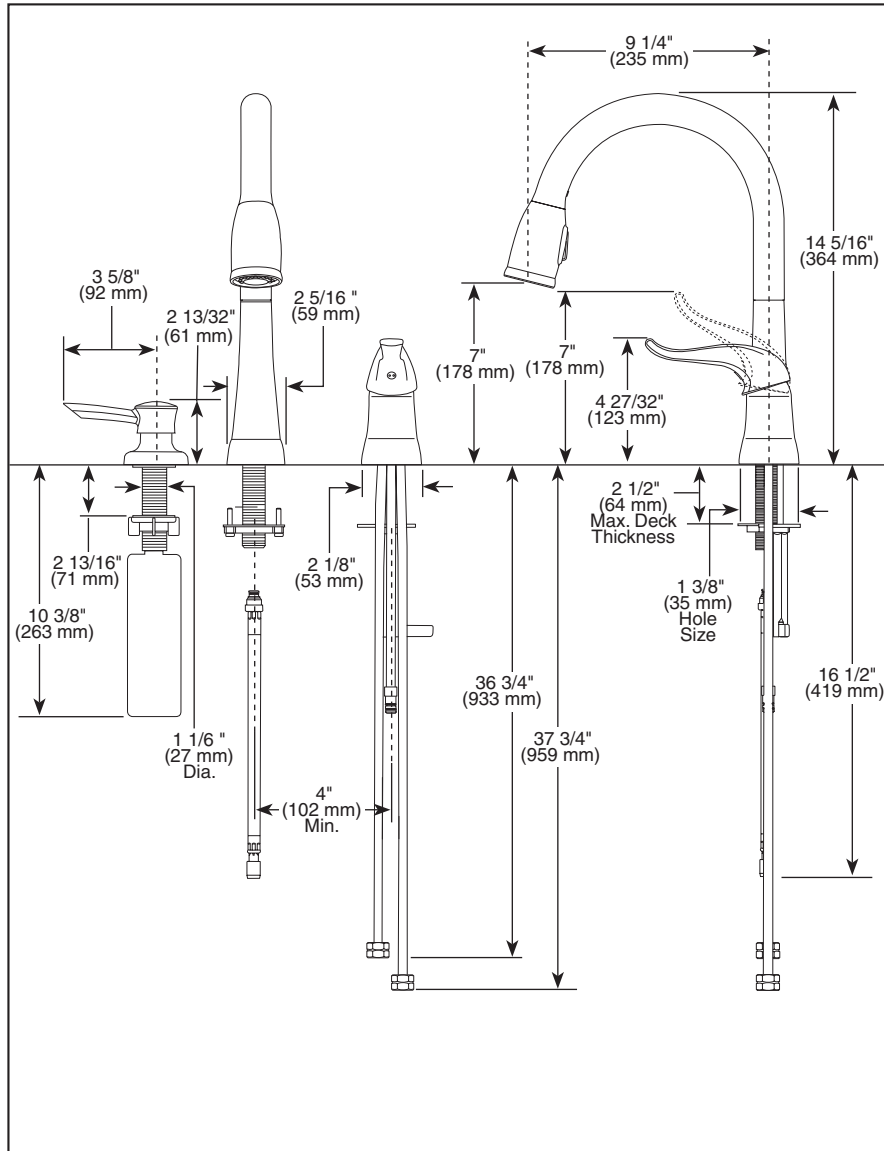


16970-SD-DST 

Submitted Model No.: \_\_\_\_\_

Specific Features: \_\_\_\_\_



## KITCHEN FAUCETS

- Single Handle Widespread
- 3 Hole Sink Applications
- Soap Dispenser
- DIAMOND™ Seal Technology
- Integrated Supply Tubes
- 2-Function Pull-Down
- MagnaTite™ Docking System


### STANDARD SPECIFICATIONS:

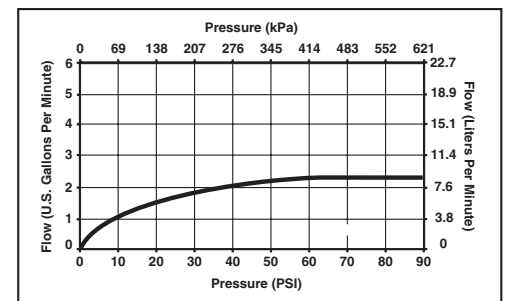
- Single handle, 2-function pull-down kitchen faucets for exposed mounting on three hole sinks.
- 14 5/16" (364 mm) high, 9 1/4" (235 mm) long, spout swings 360°.
- Control shall return to neutral position when faucet is turned off.
- Red/blue graphics on handle button to indicate hot/cold temperature.
- Certified double check valves in sprayer assembly for backflow prevention.
- Disposable hose lead to aid installation.
- Recommended hole size 1 3/8" (35mm) on 4" (102mm) centers.
- 3/8" O.D. straight, staggered pex supply tubes - 36 3/4" (934 mm) and 37 3/4" (959 mm) long.
- Touch-Clean® 2 function (stream spray) sprayhead.
- Magnetic docking system secures sprayer to spout.

### WARRANTY

- Lifetime Faucet and Finish Limited Warranty to the original consumer purchaser to be free from defects in material and workmanship.
- 5 Year Limited Warranty for usage in all industrial, commercial and business applications.

### COMPLIES WITH:

- ASME A112.18.1 / CSA B125.1
-  Indicates compliance to ICC/ANSI A17.1



55 E. 111th Street, Indianapolis, Indiana 46280  
 395 Matheson Blvd. E., Mississauga, ON L4Z 2H2  
 © 2009 Masco Corporation of Indiana

Delta reserves the right (1) to make changes in specifications and materials, and (2) to change or discontinue models, both without notice or obligation. Dimensions are for reference only. See current full-line price book or www.specselect.com for finish options and product availability.