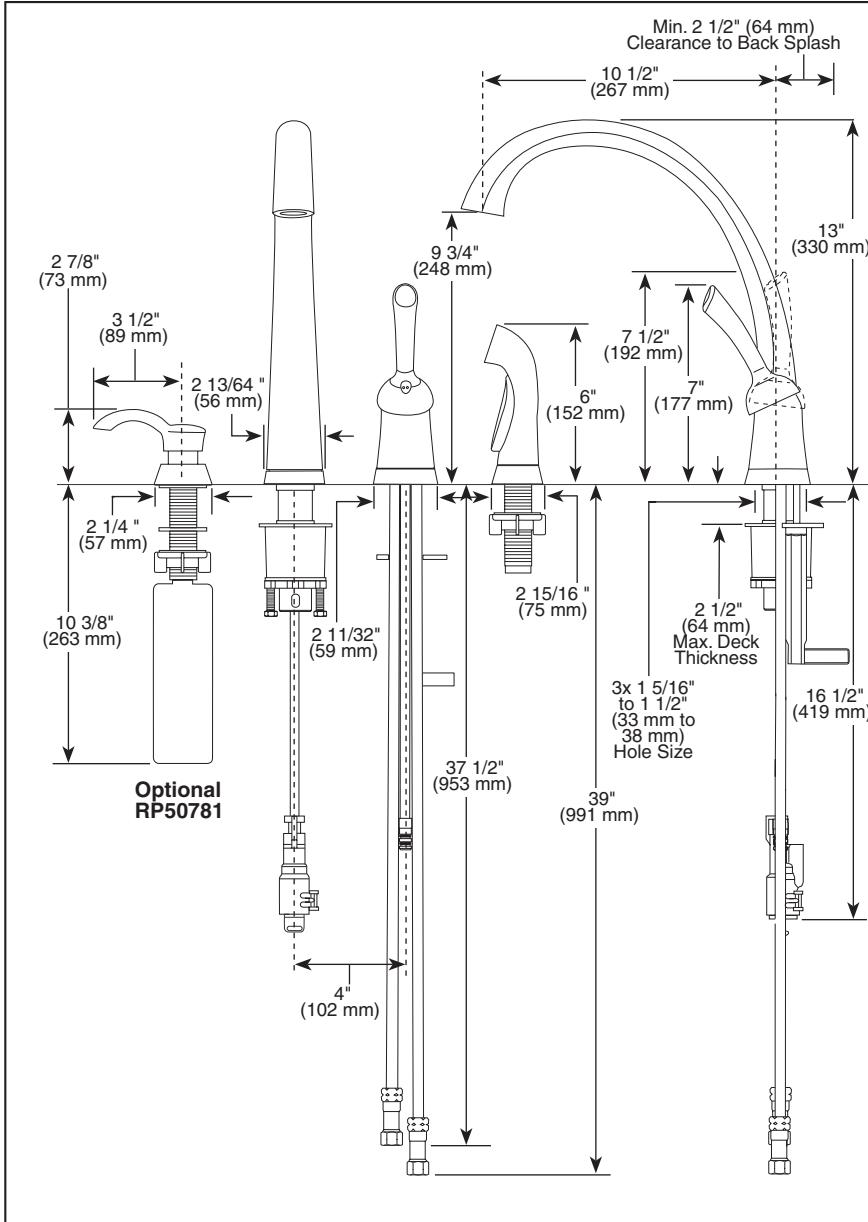


4380T-DST▲



Submitted Model No.: _____

Specific Features: _____



▲ Designate Proper Finish Suffix



KITCHEN FAUCETS

- **Pilar® Series**
- **Single Handle Widespread Deck Mount**
- **3 and 4 Hole Sink Applications**
- **Quick Snap® Hose Installation**
- **Optional Soap Dispenser**
- **DIAMOND™ Valve with Innoflex® Waterways**
- **Integrated Supply Tubes**
- **Touch2® Technology**

STANDARD SPECIFICATIONS:

- 3/8" O.D. straight, staggered pex supply tubes - 35" (889 mm) and 36" (914 mm) long.
- 10 1/2" (267 mm) long, 13" (330 mm) high spout swings 180°.
- Control handle shall return to neutral position when valve is turned off.
- Quick Snap® hose installation.
- Vegetable sprayer with matching finish sprayhead - 45" (1143mm) long hose.
- Recommended hole sizes 1 3/8" (35 mm) on 4" (102 mm) centers.
- Red/blue graphics on handle button to indicate hot/cold temperature.
- Control mechanism is a diamond coated ceramic cartridge.
- Spray attachment has anti-siphon device as integral part of valve.
- Delta Touch2® Technology controls waterflow.
- On-Off indicator light also signals when batteries run low.

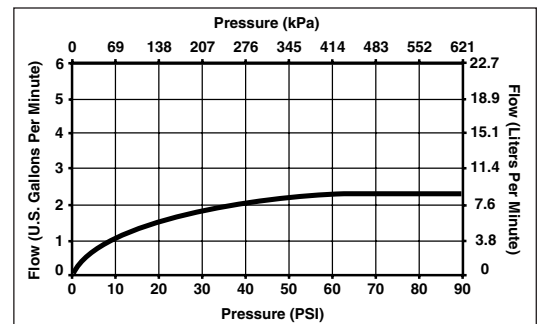
WARRANTY

- 5 Year Limited Warranty on faucet, finish and electronics.



COMPLIES WITH:

- ASME A112.18.1 / CSA B125.1
- Indicates compliance to ICC/ANSI A117.1
- Verified compliant with .25% weighted average Pb content regulations.



Delta reserves the right (1) to make changes in specifications and materials, and (2) to change or discontinue models, both without notice or obligation. Dimensions are for reference only. See current full-line price book or www.specselect.com for finish options and product availability.

DSP-K-4380T-DST Rev. A



55 E. 111th Street, Indianapolis, Indiana 46280
 395 Matheson Blvd. E., Mississauga, ON L4Z 2H2
 © 2009 Masco Corporation of Indiana