

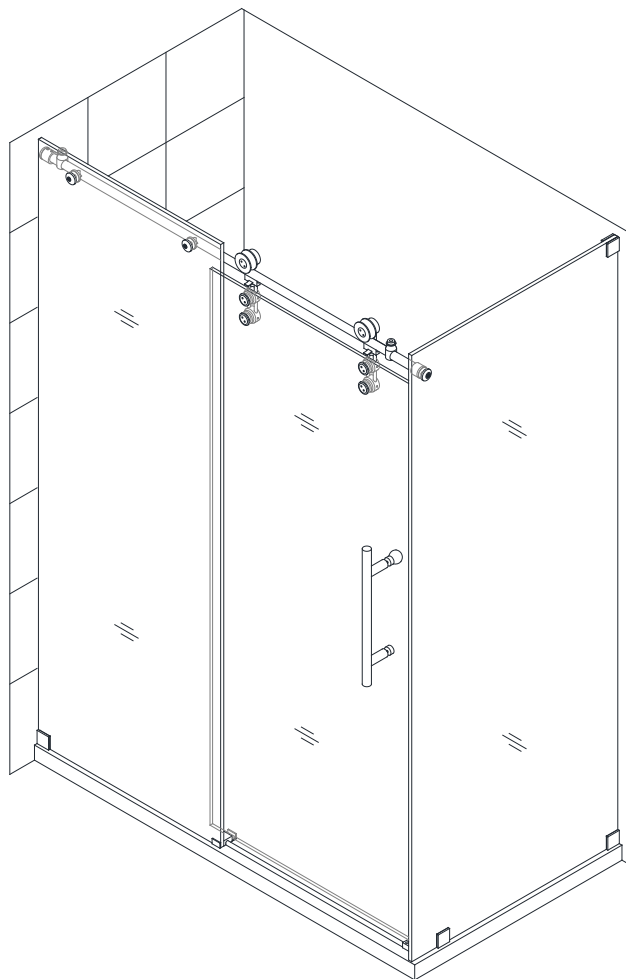


ENIGMA-Z Enclosure

SHOWER ENCLOSURE INSTALLATION INSTRUCTIONS

IMPORTANT

DreamLine® reserves the right to alter, modify or redesign products at any time without prior notice. For the latest up-to-date technical drawings, manuals, warranty information or additional details please refer to your model's web page on **DreamLine.com**



Right-hand return panel installation shown

MODEL #s

SHEN-623448-##

SHEN-623460-##

##=finish

07- Brushed Stainless Steel

08- Polished Stainless Steel



Questions?

Please Call **DreamLine** Customer Support: **1-855-831-2126**
Hours of Operation M-F 8AM - 7PM EST and Saturday 9AM - 5PM EST

Support@DreamLine.com



For more information about DreamLine® Shower Doors & Tub Doors please visit **DreamLine.com**



This model is treated with DreamLine's exclusive ClearMax™ Glass technology. This is a specially formulated coating that prevents the build up of soap and water spots.

Install the surface with the ClearMax™ label towards the inside of the shower. Please note that depending on the model, the glass may be coated on either one or both surfaces.

For best results, squeegee the glass after each use and dry with a soft cloth.

Preparation

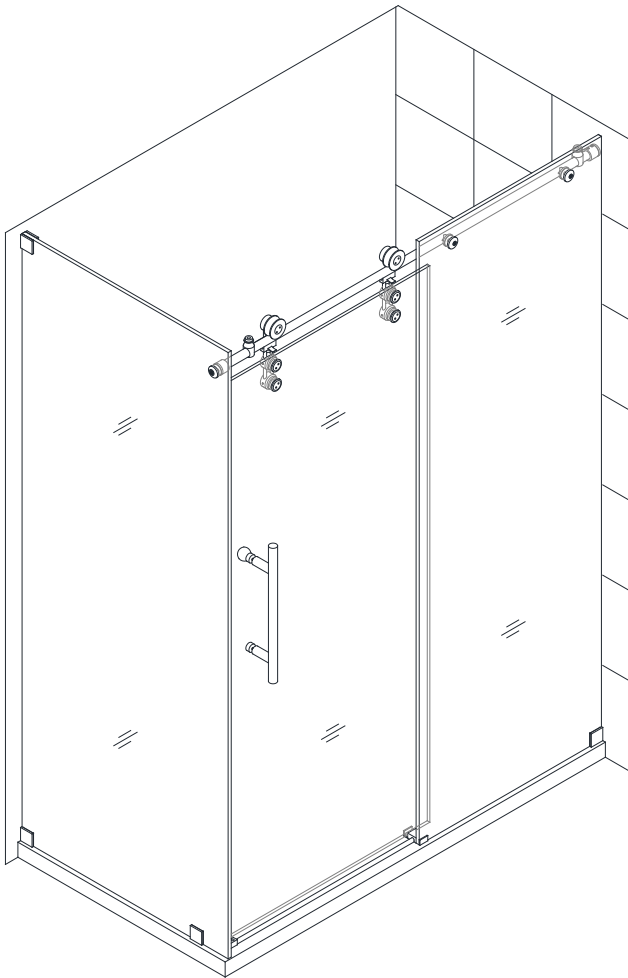
1. Prior to installation, examine all boxes and packages for shipping damage and compare the piece count with your packing slip. After opening all boxes and packages read this introduction carefully. Check that all of the needed parts are included in the package by checking off the components on the "Detailed Diagram of Shower Door Components". If the unit has been damaged, has a finishing defect, or has missing parts, please contact our customer support department within **3 business days** of the delivery date. **Please note that DreamLine® will not replace any damaged products or missing parts free of charge after 3 business days or if the product has been installed.** Contact DreamLine® if you have any questions, and please provide an order number, job name or other proof of purchase to help to identify the original order.
2. Please note that you should consult your local building codes with questions on installation compliance standards. Building and plumbing codes may vary by location, and **DreamLine® is not responsible for code compliance standards for your project and will not accept any returns.**
3. If this unit is going to be installed in new construction, please install all of the required plumbing and drainage before installing the shower. Use a competent and licensed (if required by local code) plumber for all plumbing installation.
4. Please make sure that prior to beginning the installation, the surfaces are leveled and solid and will be able to support the total weight of the unit. Also make sure the walls are at right angles. Irregular installation surface level, radius corners or improper angle of side walls will result in serious problems for your installation. Please note that some adjustments and drilling might be necessary during the installation process.
5. Please protect all primary surfaces of the product during installation. Never set your glass down directly onto a tile floor. Leave corner protectors in place until necessary to remove them. Always use a piece of wood or cardboard to protect the bottom edge and corners of the glass prior to and during installation.
6. This unit must be installed upon a finished threshold and against finished walls.
7. This model has NO adjustment for out-of-plumb wall conditions. Verify that your walls are plumb before proceeding with the installation.
8. This model requires that you drill into the threshold for proper installation.
9. Take extra care during installation when you set your glass directly onto the threshold as instructed.
10. This door requires a minimum **2-3/8"** of flat threshold space for installation.
11. **Please note that step #15 calls for installation of the door to the wall using anchors. However, the manufacturer strongly recommends installing these heavy doors to the studs or to pre-installed 2x6" wood reinforcements behind the wall.**
12. **Note:** The installation of this unit requires that you drill down into the threshold.

Attention: This door is extremely heavy and requires professional installation and 2 installers.

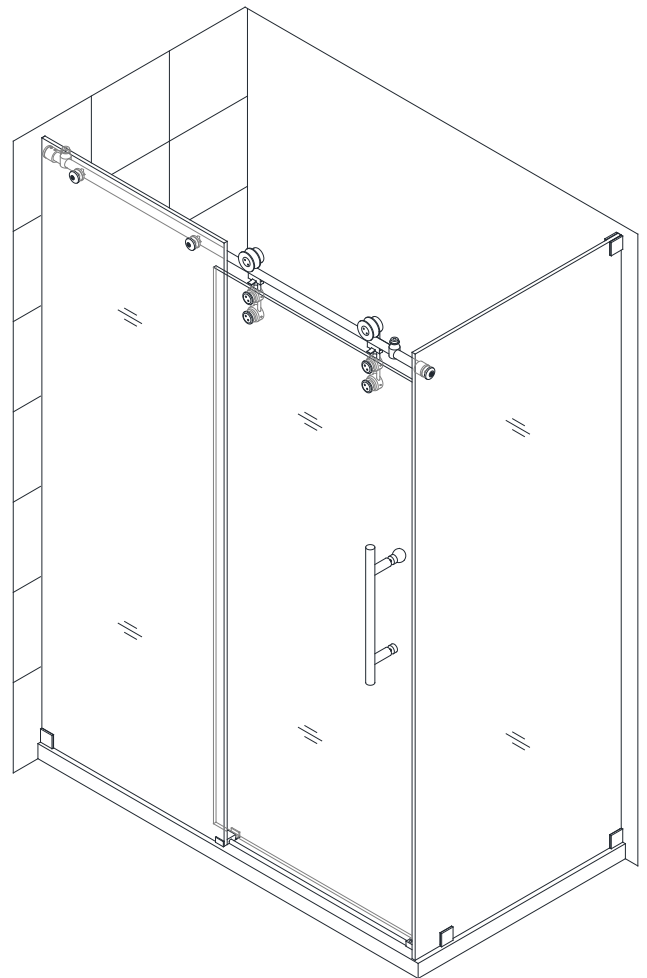


NOTE: Do not attach the handle to the door glass until instructed.

Do not attempt to lift the door glass with the handle as this may result in damage to the glass and/or serious personal injury. Use a professional grade glass suction cup and an assistant when handling heavy glass.



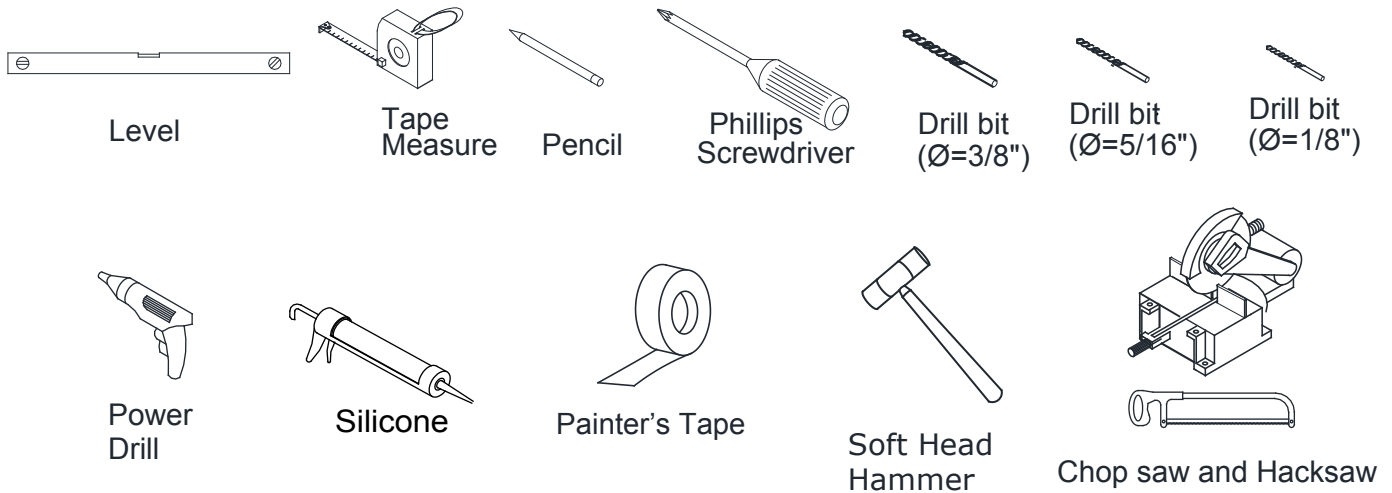
Left-hand return panel installation



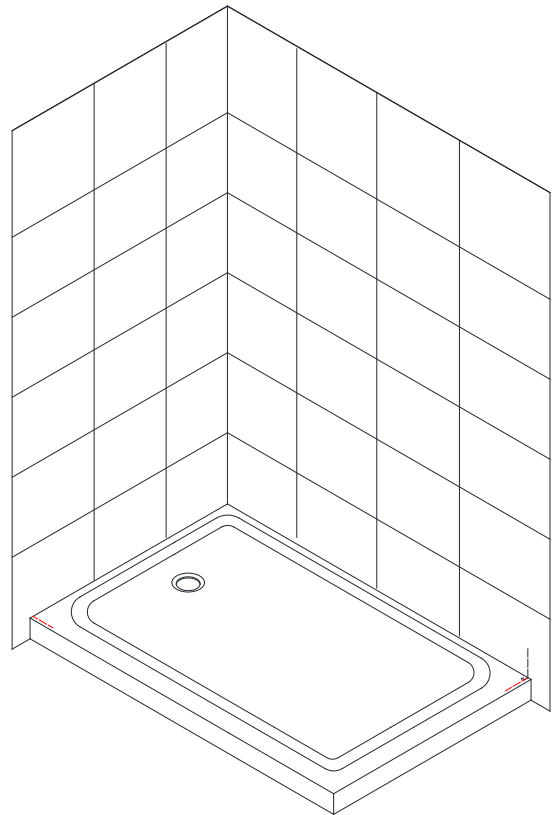
Right-hand return panel installation

NOTE: The Enigma-Z enclosures are reversible for left or right-hand return panel installation. This manual will show the right-hand return panel installation. For a left-hand return panel installation, simply begin on the opposite wall and reverse the orientation of the parts as necessary.

Tools



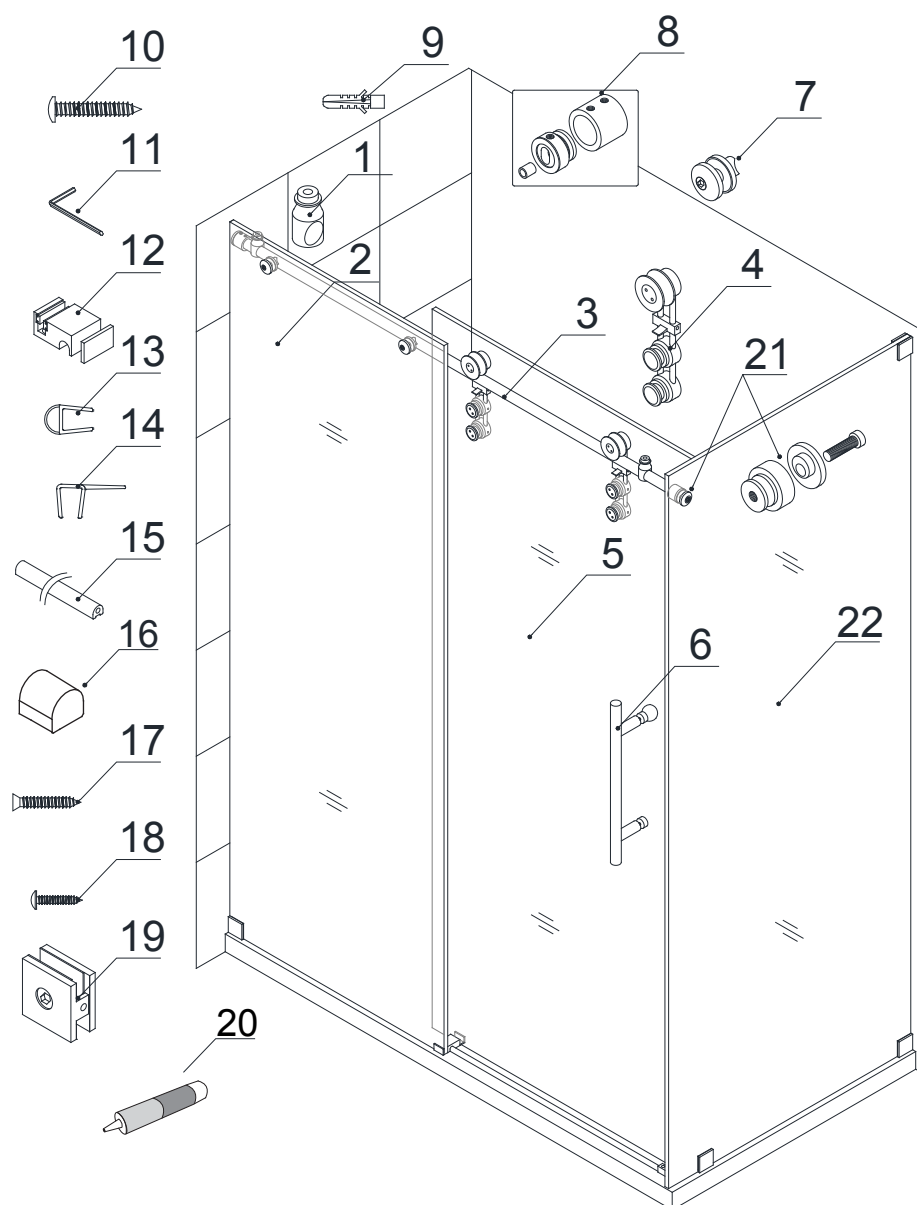
Tip: Measure the finished opening before proceeding with the installation to be sure that the correct model size has been ordered.



NOTE: Unpack your unit carefully and inspect it. Lay it out and identify all parts using the detailed diagram and packing list in this manual as a reference. Before discarding the carton, check for small hardware bags that may have fallen to the bottom of the box. If any parts are damaged or missing, please contact DreamLine® for replacement. The shipping boxes may contain extra parts not used in your model configuration.

NOTE: Retain these installation instructions for future reference.

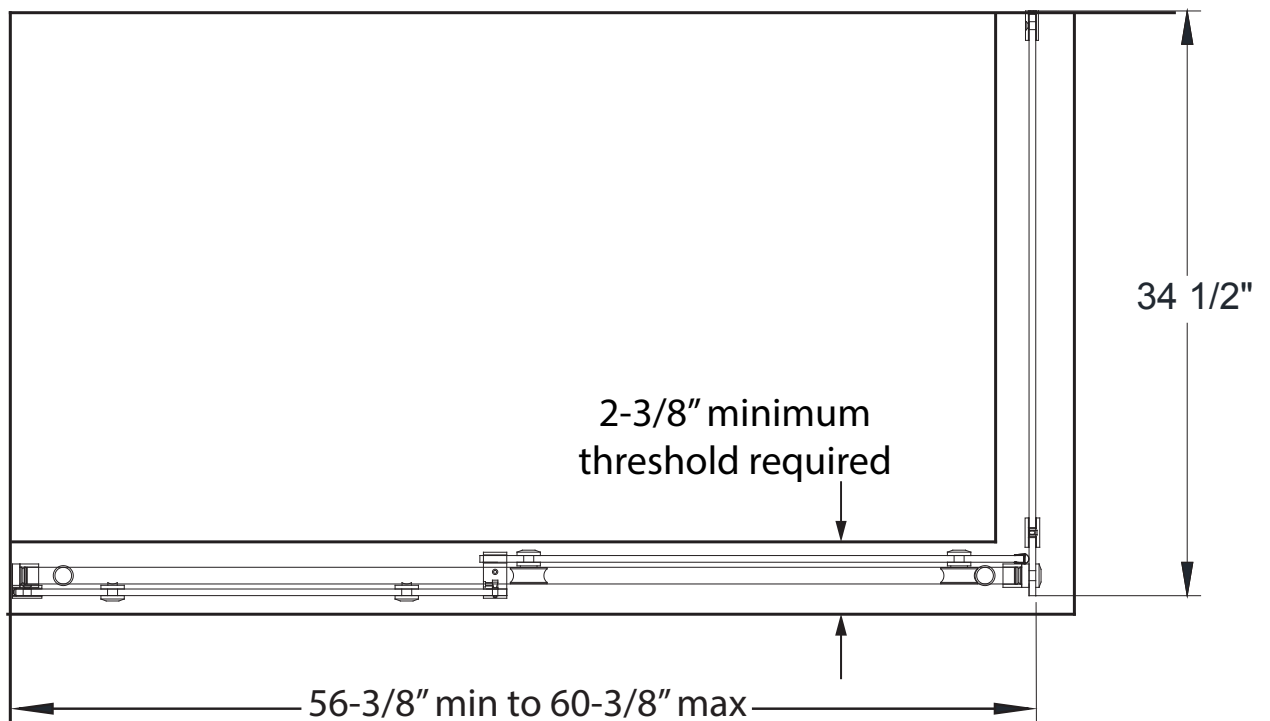
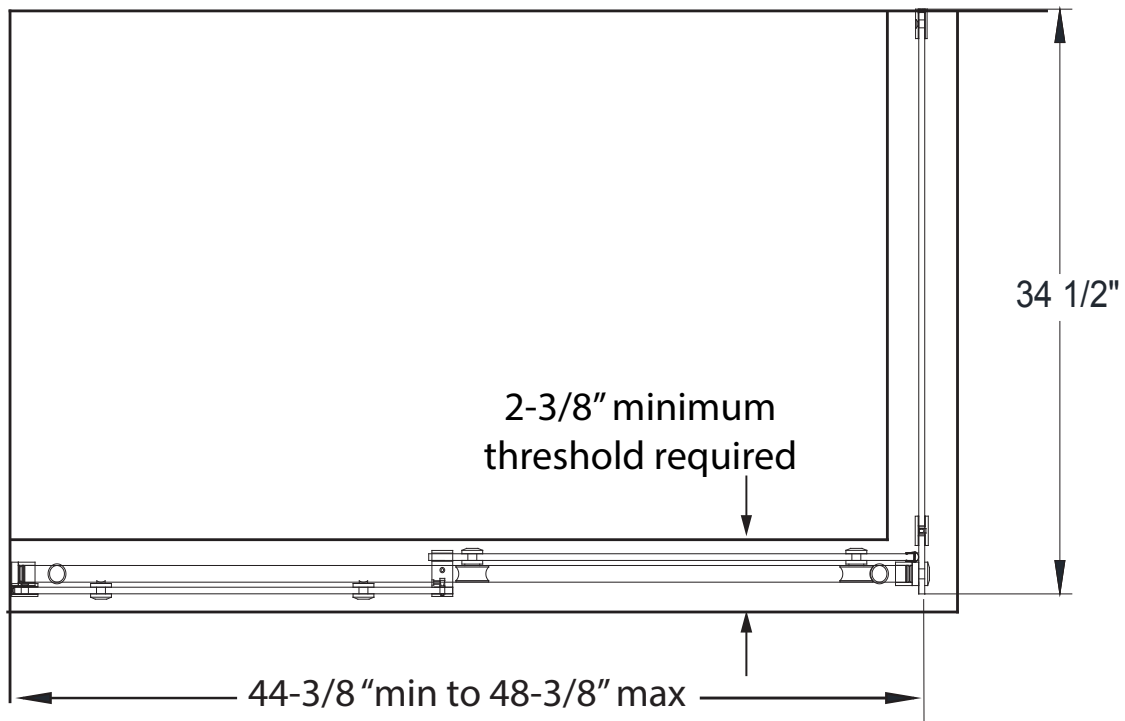
Detailed Diagram of shower door components



Parts List

Part#	Description	Qty	Part#	Description	Qty
01	Door stopper	2pcs	12	Guide block	1pc
02	Stationary glass	1pc	13	Bumper seal strip	1pc
03	Guide rail	1pc	14	Anti-water strip	2pcs
04	Roller	2pcs	15	Anti-splash guard	1pc
05	Door Glass	1pc	16	Anti-splash guard cap	1pc
06	Handle	1pc	17	Countersunk screw ST4.2×25	4pcs
07	Glass bracket	2pcs	18	Truss head screw ST4.2×55	3pcs
08	Guide rail bracket	2pcs	19	Wall bracket	4pc
09a	Wall anchor Ø 3/8"	1pc	20	Thread Lock Adhesive	1pc
09b	Wall anchor Ø5/16"	3pcs	21	Glass Connector	1pc
10	Large Truss head screw ST6×65	1pc	22	Return panel	1pc
11	Hex wrench 3mm, 4mm, 5mm	1set			

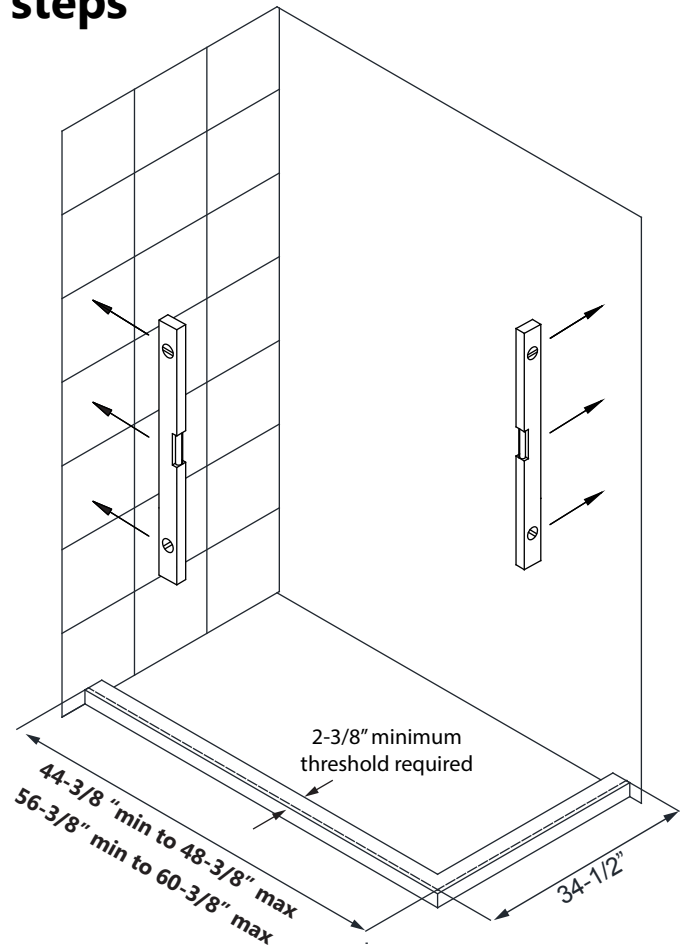
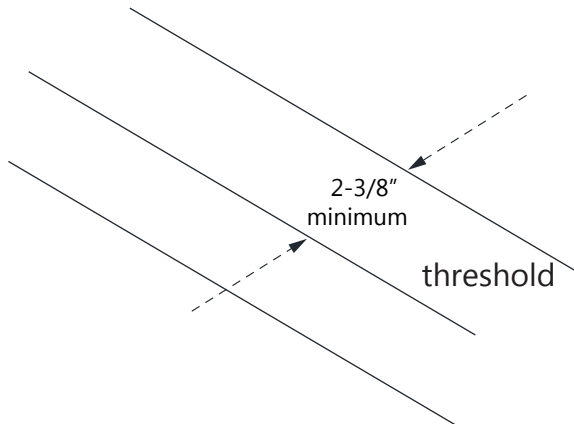
Shower Enclosure Plan



Installation steps

1. This shower enclosure requires a minimum **2-3/8"** wide threshold, shower base, or installation space. Compare the overall outside dimensions of the shower enclosure model size (as shown on the "Shower Enclosure Plan") with your finished threshold.

See Fig. 1 for details



outside dimensions of installed enclosure

2. Attach the **Wall brackets (#19)** to the **Return panel (#22)**. The bolted side should face the inside of the shower.

See Fig. 2 for details

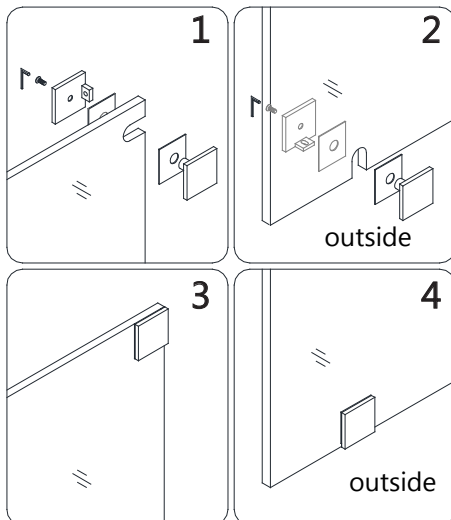


Fig. 1

Fig. 2

3. Place the **Return panel (#22)** on the pre-installed shower base or threshold. Position the panel up against the wall and level it vertically (plumb). Make sure the **Return panel (#22)** is aligned with the shower base or threshold and will create an opening that is within the model dimensions of the door section: <48" (SHEN-6234480) or <60" (SHEN-6234600) depending on the model size.

See the "Shower Enclosure Plan" on page 5 for dimensions.

See Fig. 3 for details

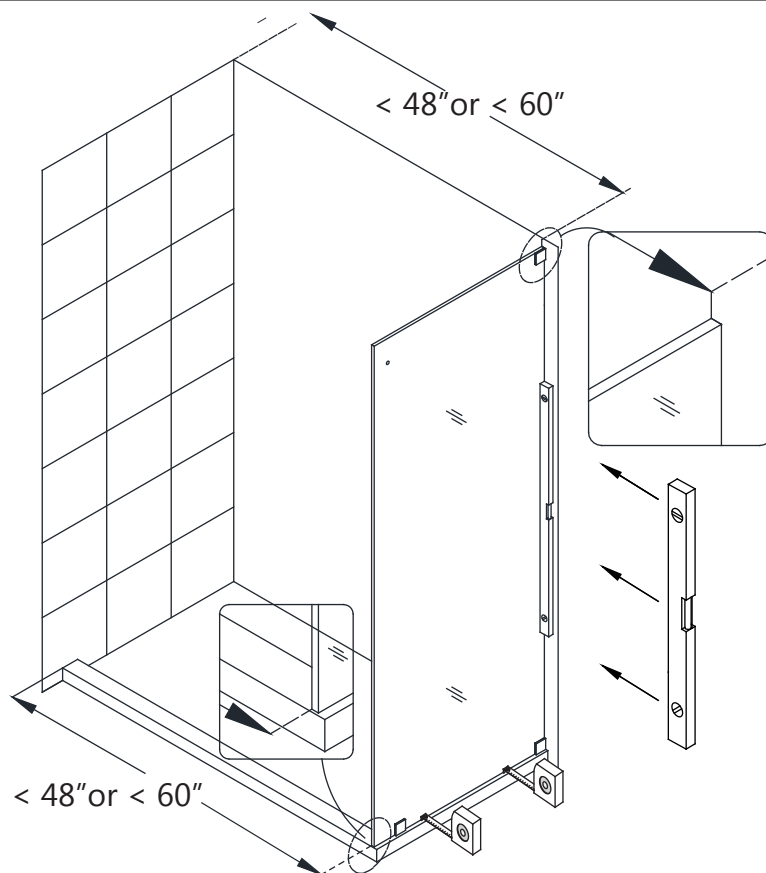


Fig. 3

4. Outline the position of the **Wall brackets (#19)** on the wall and the shower base or threshold. Carefully set the **Return panel (#22)** aside. Remove the **Wall brackets (#19)** from the **Return panel (#22)**, and place them back in their marked positions, then mark the drilling holes on the wall and threshold.

See Fig. 4 for details

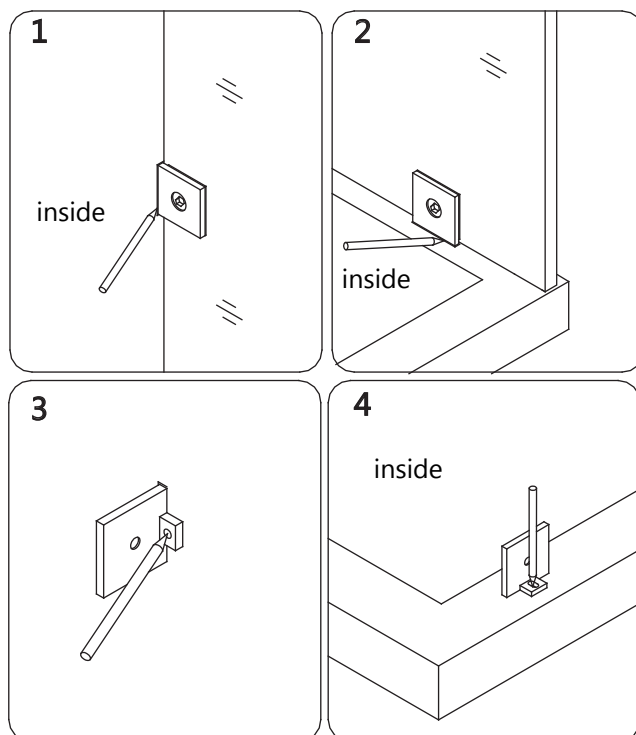
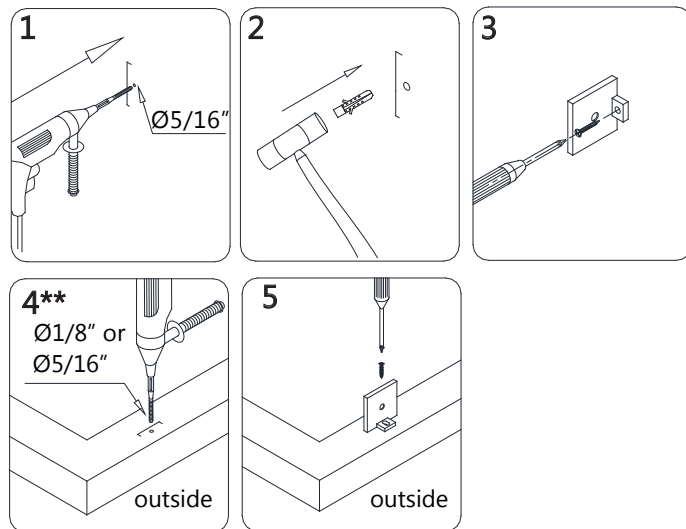


Fig. 4

5. Drill the holes in the wall using a $\varnothing 5/16''$ drill bit and insert the **Wall anchors (#9b)** for the two **Wall brackets (#19)**. Mount the **Wall brackets (#19)** to the wall using the **Truss head screw ST4.2×55 (#18)**.

For installation into an acrylic base: Drill a hole in the shower base threshold using an $\varnothing 1/8''$ drill bit and mount the remaining **Wall bracket (#19)** to the threshold using the **Round head screw ST4.2×25 (#17)**.

****for installation onto a tile threshold, drill a $\varnothing 5/16''$ hole and install an anchor, then use the Round head screw ST4.2×25 (#17).**



See Fig. 5 for details

Fig. 5

6. Place the **Return Panel (#22)** back in the designated position and assemble the **Wall brackets (#19)** to the **Return Panel (#22)**. Install the supplied gaskets to protect the glass.

See Fig. 6 for details

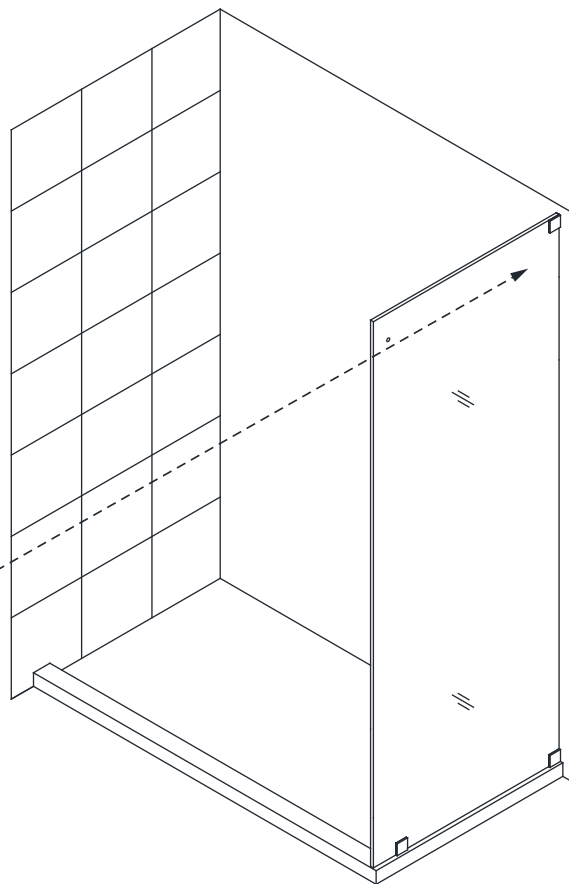
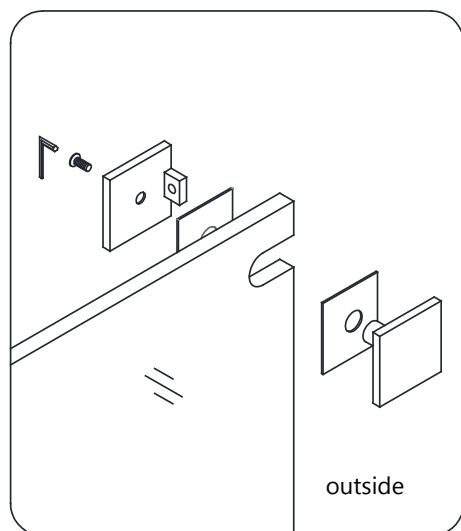


Fig. 6

7. Measure the distance from the finished wall to the inside surface of the installed **Return Panel Glass (#22)**.
This distance will represent the finished opening size "**W**" that will be used to calculate the finished cut dimension for the **Upper Guide rail (#03)**.

See Fig. 7 for details

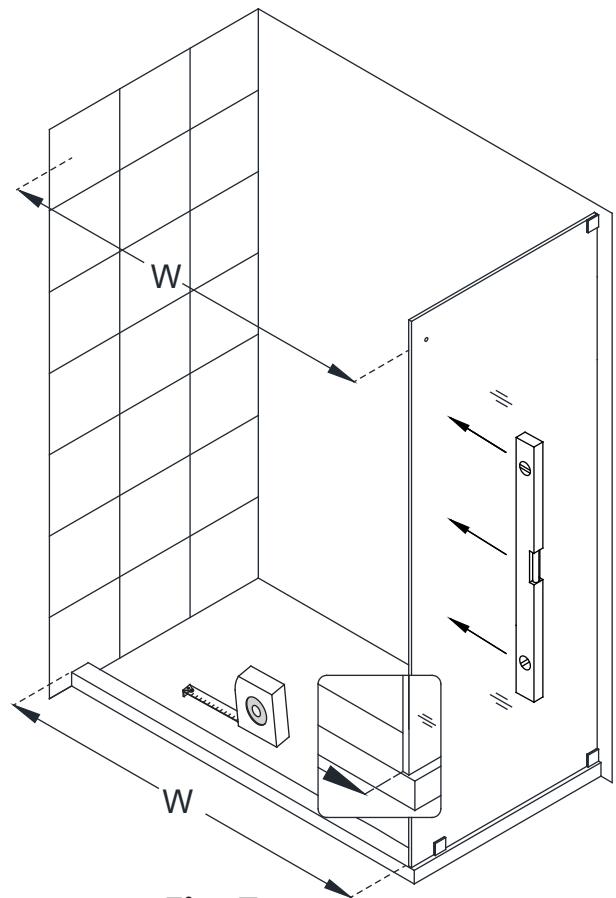


Fig. 7

8. Your **Upper Guide rail (#03)** has been precut for your model width of: 48" or 60" (the actual rail is shorter than the model width by design).

You will need to cut the **Upper Guide rail (#03)** from the door end, which is farthest from the **Glass bracket (#07)** holes.

The length to cut off will be **L**:

Model Width – opening W = cut off length L

See Fig. 8 for details

FOR EXAMPLE:

If your model width is 60" and your finished opening is 58", then you will need to cut 2" off of the rail:
Example: 60" – 58" = 2" cut off length

***Note that this is only an example and the actual cut-off length will vary based on the actual finished opening dimension.**

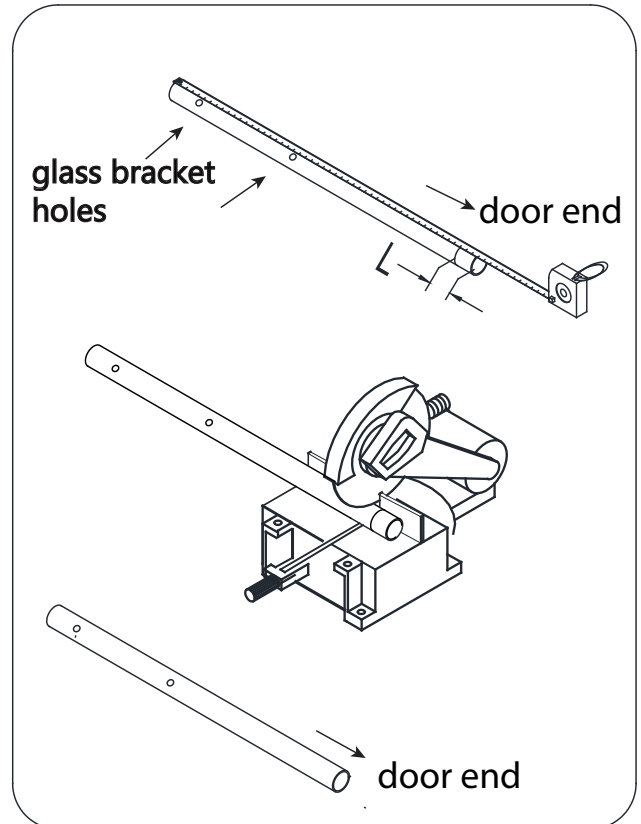


Fig. 8

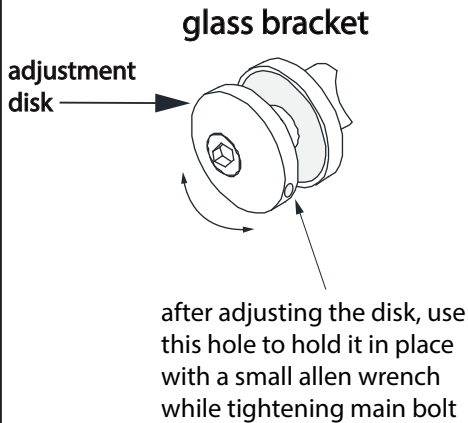
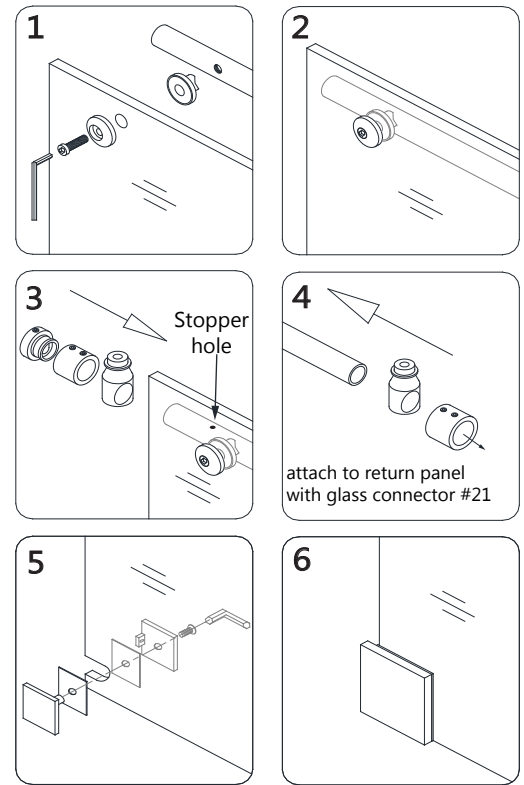
9. Attach the **Upper guide rail (#03)** to the **Stationary glass (#02)** with the **Glass brackets (#07)** and tighten the bolts into the pre-drilled holes in the **Upper guide Rail (#03)**. Make sure both adjustment disks are installed in the same direction with the high spot facing toward the door end (see ***NOTE** below). Make sure the guide rail is parallel with the top edge of the glass (see **Fig. 10**)

(EQ=Equal distance)

Slide the **Door stoppers (#01)** onto each end of the **Upper guide rail (#03)** and secure them temporarily using the **4mm hex wrench (#11)**. The stopper on the stationary panel side installs into a hole in the rail. (see **Fig 9.3**)

Slide the **Guide Rail brackets (#08)** onto each end of the **Upper guide rail (#03)** and temporarily secure them as well. Next, assemble the **Wall Bracket (#19)** onto the bottom corner of the **Stationary glass (#02)** as shown in **Fig. 9.5**. Use the provided gaskets to protect the glass.

See Fig. 9 and Fig. 10 for details



***NOTE:** The outer glass bracket disk has an eccentric bushing for adjustment. Be sure to install both glass bracket disks with the high spot of the bushing pointed toward the door end of the guide rail. See the detail of the disks below as viewed from inside prior to installing on the glass.

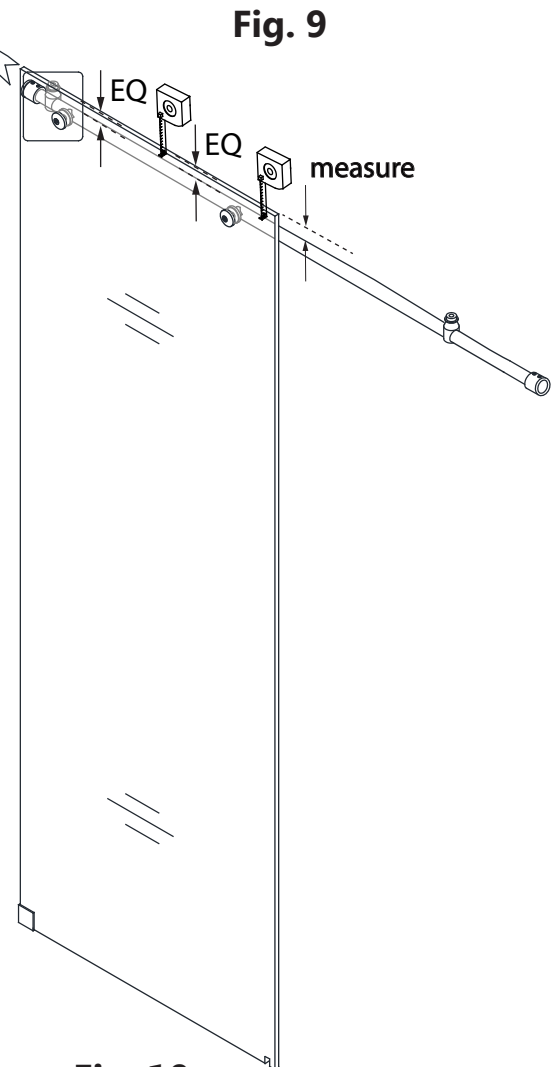
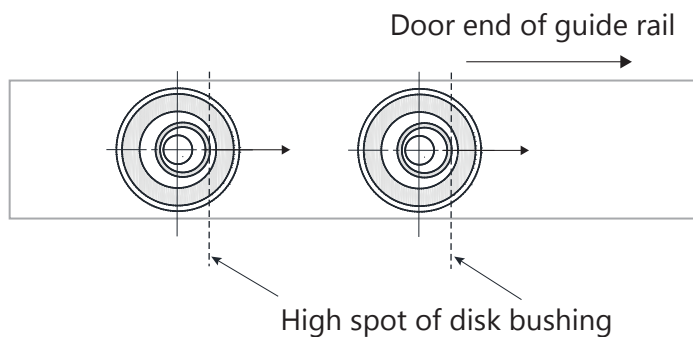
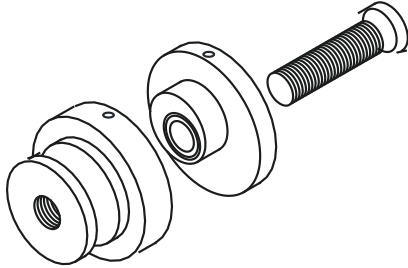


Fig. 10

10. Place the **Stationary glass (#02)** onto the shower base or threshold and position it against the wall. Temporarily fasten the **Upper Guide Rail (#03)** to the **Return panel (#22)** using the **Glass Connector (#21)**. Temporarily tighten the set screws to hold in place.

See Fig. 11 for details



Glass Connector (#21)

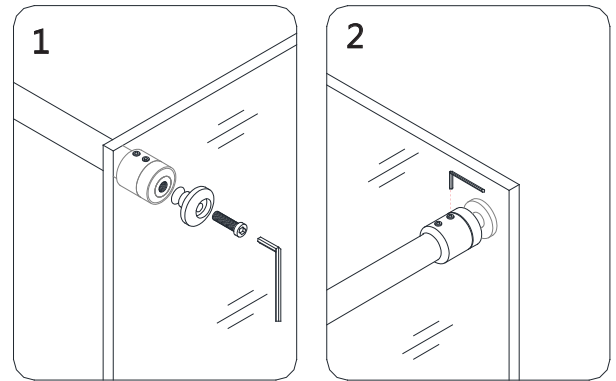


Fig. 11

11. Dry fit the **Guide block (#12)** and the **Anti-splash guard (#15)** into place at this time to mark their positions on the threshold.

Make sure the **Stationary glass (#02)** is plumb and the **Guide rail (#03)** is level. Adjust the **Guide rail (#03)** to level by using the **Glass brackets (#07)**. Rotate the elliptical adjustment disk on the outside of the **Glass bracket (#07)**, and then re-tighten the bolt while holding the adjustment disk in place.

See Fig. 12 for details

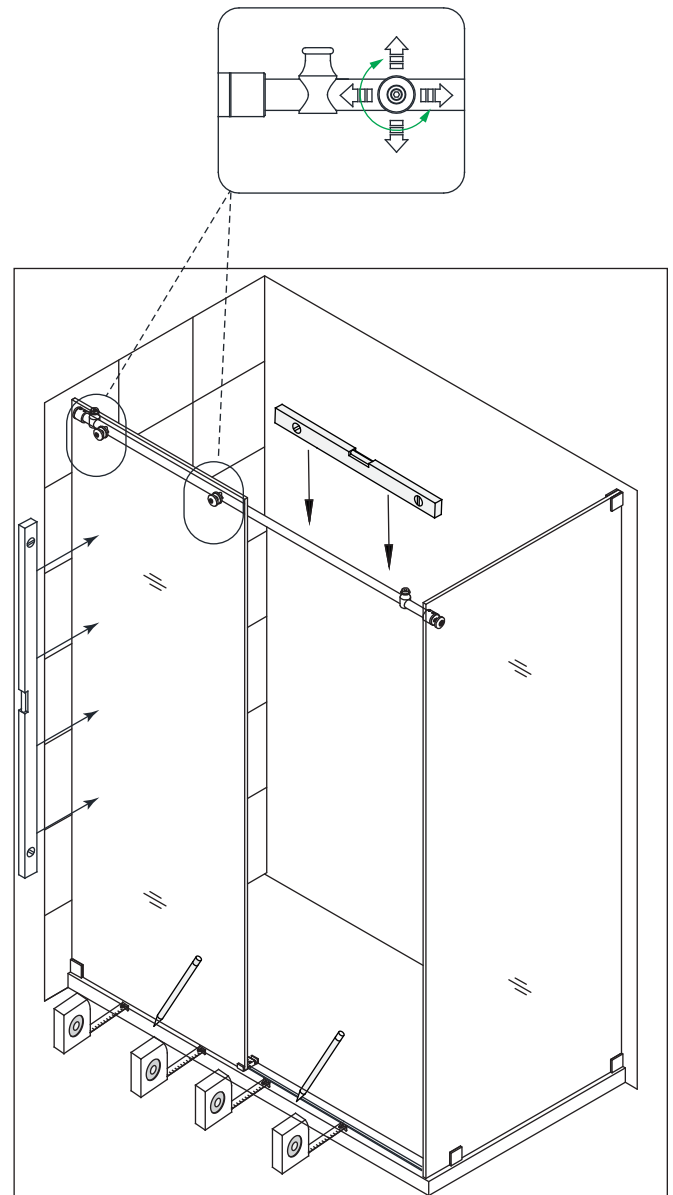


Fig. 12

12. Outline the position of the **Wall bracket (#19)** and the **Guide rail bracket (#08)** on the wall.

See Fig. 13 for details

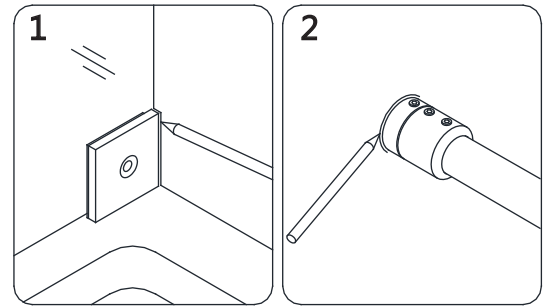


Fig. 13

13. Mark the position of the **Guide block (#12)** on the threshold (Make sure the **Guide block (#12)** is square to the threshold). Measure the distance from the **Return Panel Glass (#22)** to the far edge of the **Guide block (#12)**. This distance will be "**X**". Align the **Anti-splash guard (#15)** parallel to the front edge of the threshold and mark it. The **Anti-splash guard (#15)** will need to be cut to the size of: **X - 3/8"**.

See Fig. 14 details

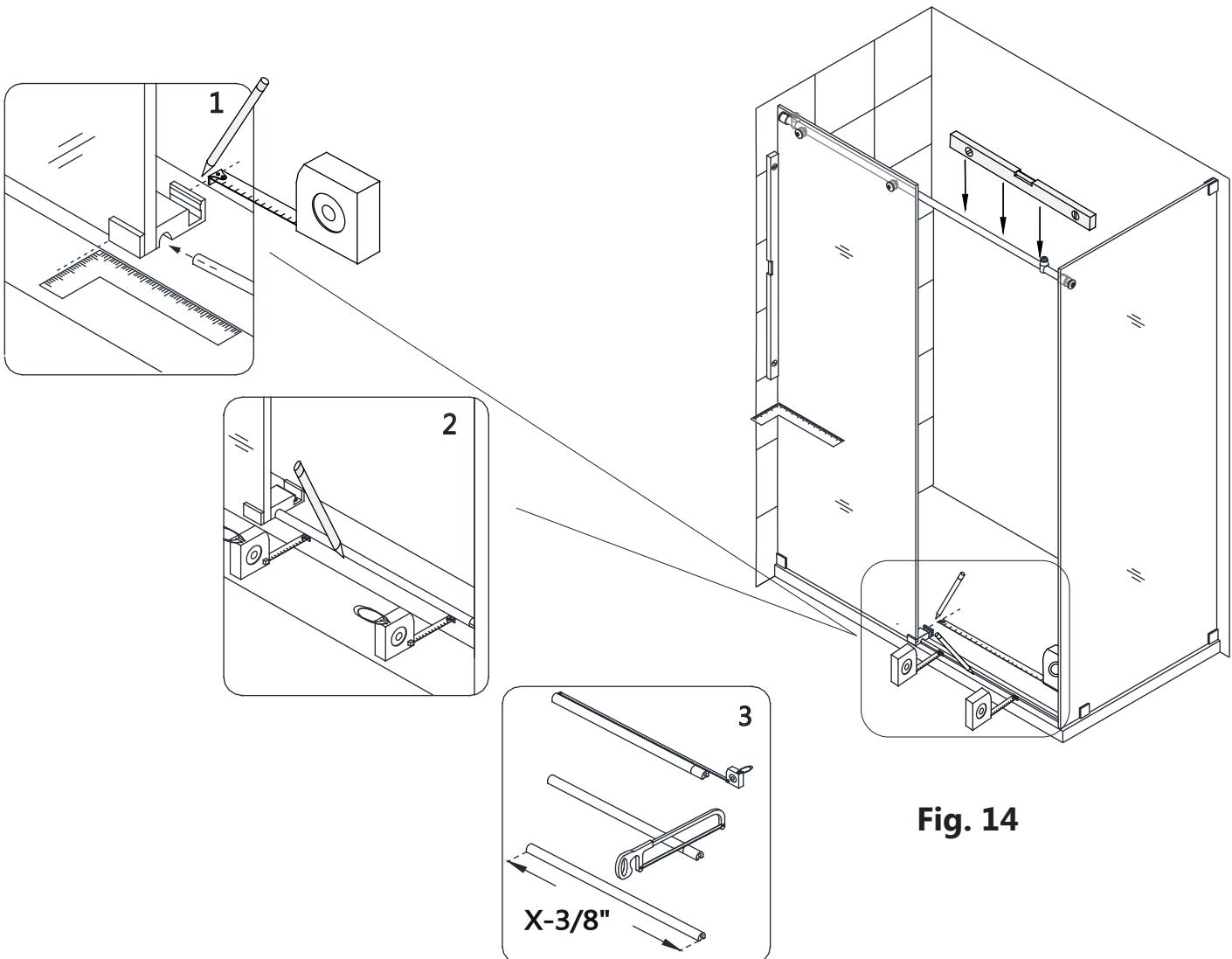


Fig. 14

14. Carefully set the **Stationary glass (#02)** and **Upper Guide Rail (#03)** aside, along with the **Guide block (#12)** and **Anti-splash guard (#15)**.

Remove the **Guide Rail Brackets (#08)** from the **Upper Guide Rail (#03)** (as shown below) and the **Wall bracket (#19)** from the **Stationary glass (#02)**. Place the **Wall bracket (#19)** and **Guide Rail bracket (#08)** on the outlined positions and mark the holes for drilling.

See Fig. 15 for details

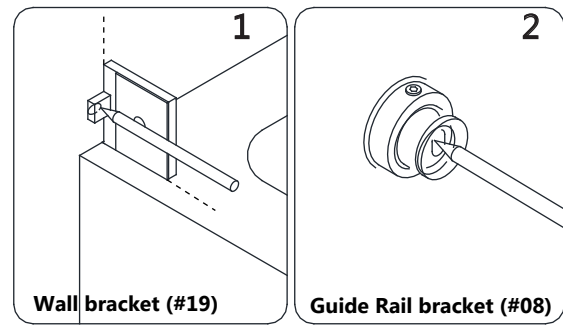
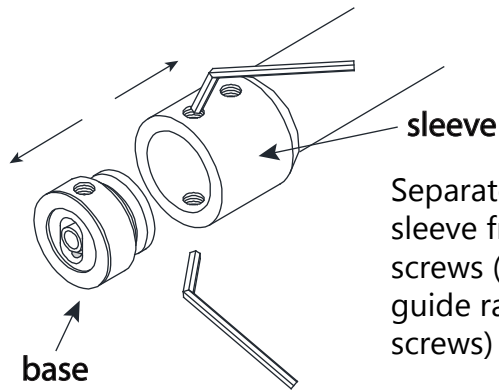


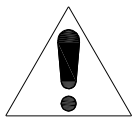
Fig. 15



Separate the **Guide Rail Bracket (#08)** sleeve from the base by loosening the set screws (leave the sleeve on the upper guide rail and temporarily tighten the set screws)

15. Drill the holes for the **Wall bracket (#19)** using a **Ø5/16"** drill bit and insert the **Wall anchors (#9b)** (Fig. 10.1)

****Drill the holes for the Guide rail brackets (#08) using a Ø 3/8"** drill bit and insert the **Wall anchors (9a)**.**



See Fig. 16 for details

****NOTE:** The manufacturer strongly recommends installing the guide rail brackets into studs or pre-installed 2x6 wood reinforcements behind the wall.

For installation into a stud, drill a **Ø1/4"** hole up to the stud and let the screw bore into the wood.

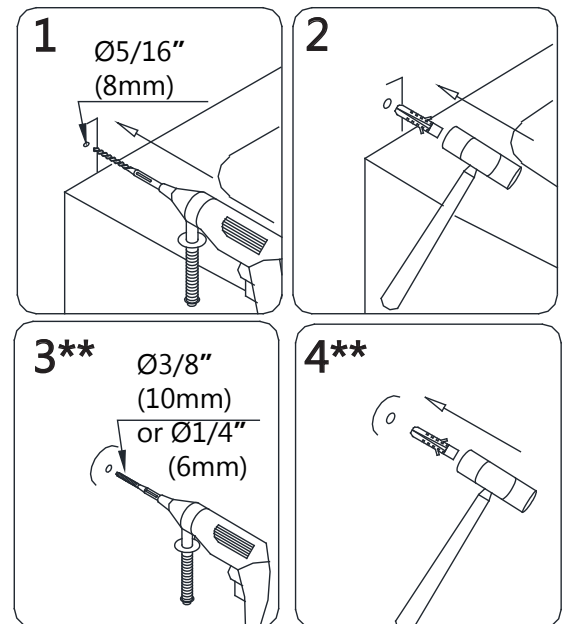
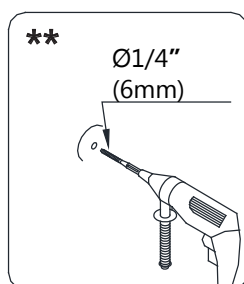
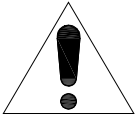
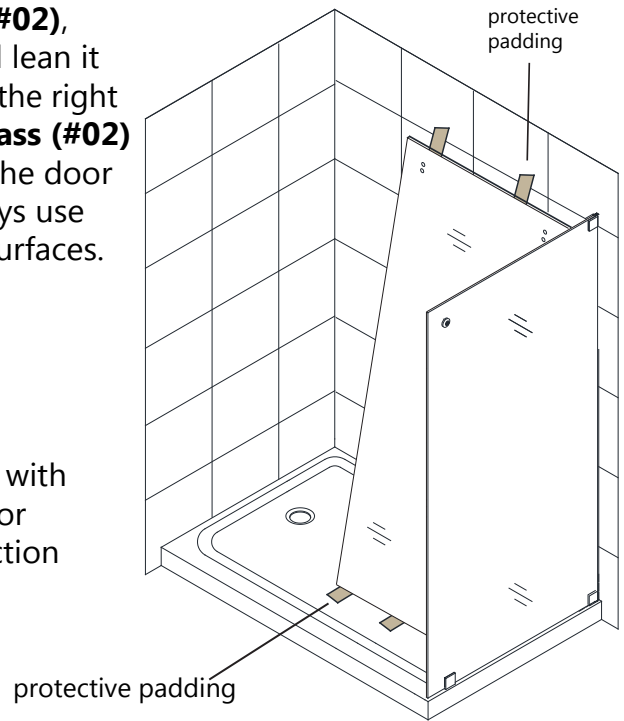


Fig. 16



NOTE: Before you install the **Stationary glass (#02)**, bring the **Door Glass (#05)** into the shower and lean it against the wall. Make sure the door is facing in the right direction for installation. After the **Stationary glass (#02)** is installed, it may not be possible to easily get the door glass into the shower or to turn it around. Always use padding to protect the door glass and shower surfaces.

NOTE: Do Not attach the handle to the door glass until instructed to do so. Do Not attempt to lift the door glass with the handle as this may result in damage to the glass and/or serious personal injury. Use a professional grade glass suction cup and an assistant.



16. Fasten the **Wall bracket (#19)** to the wall using the **Truss head screw ST4.2×55 (#18)**. (Fig. 17.1)

Mount the base of the **Guide Rail brackets (#08)** onto the wall using the **Large Truss Head screw ST6×65 (#10)**. Note that the adjustment **set screws must be aligned vertically** for easier access to adjust for level after the glass is installed. (Fig 17.2 & 17.3)

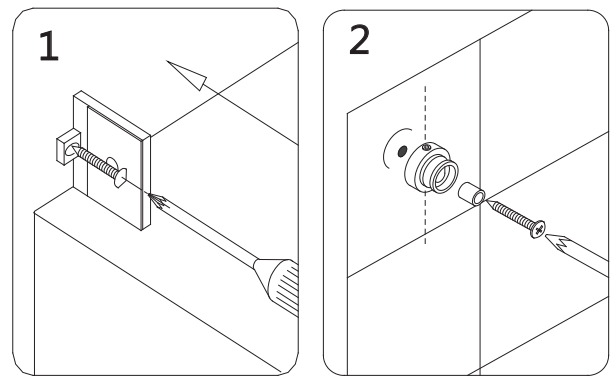


Fig. 17

See Fig. 17 for details

17. Apply silicone to the bottom of the **Anti-splash guard (#15)** and the **Guide block (#12)**. Insert one end of the **Anti-splash guard (#15)** fully into the **Guide block (#12)** and align both pieces on the threshold using the marks made in **Step #13**. Apply silicone to the **Anti-splash guard cap (#16)**, and place it at the wall end of the **Anti-splash guard (#15)**. Apply several strips of painter's tape to hold the **Anti-splash guard (#15)** and cap in place while the silicone cures.

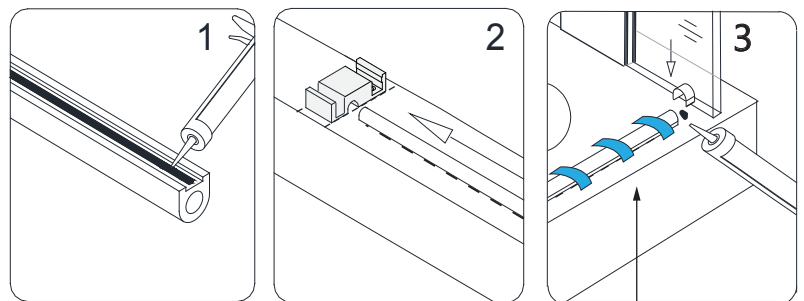
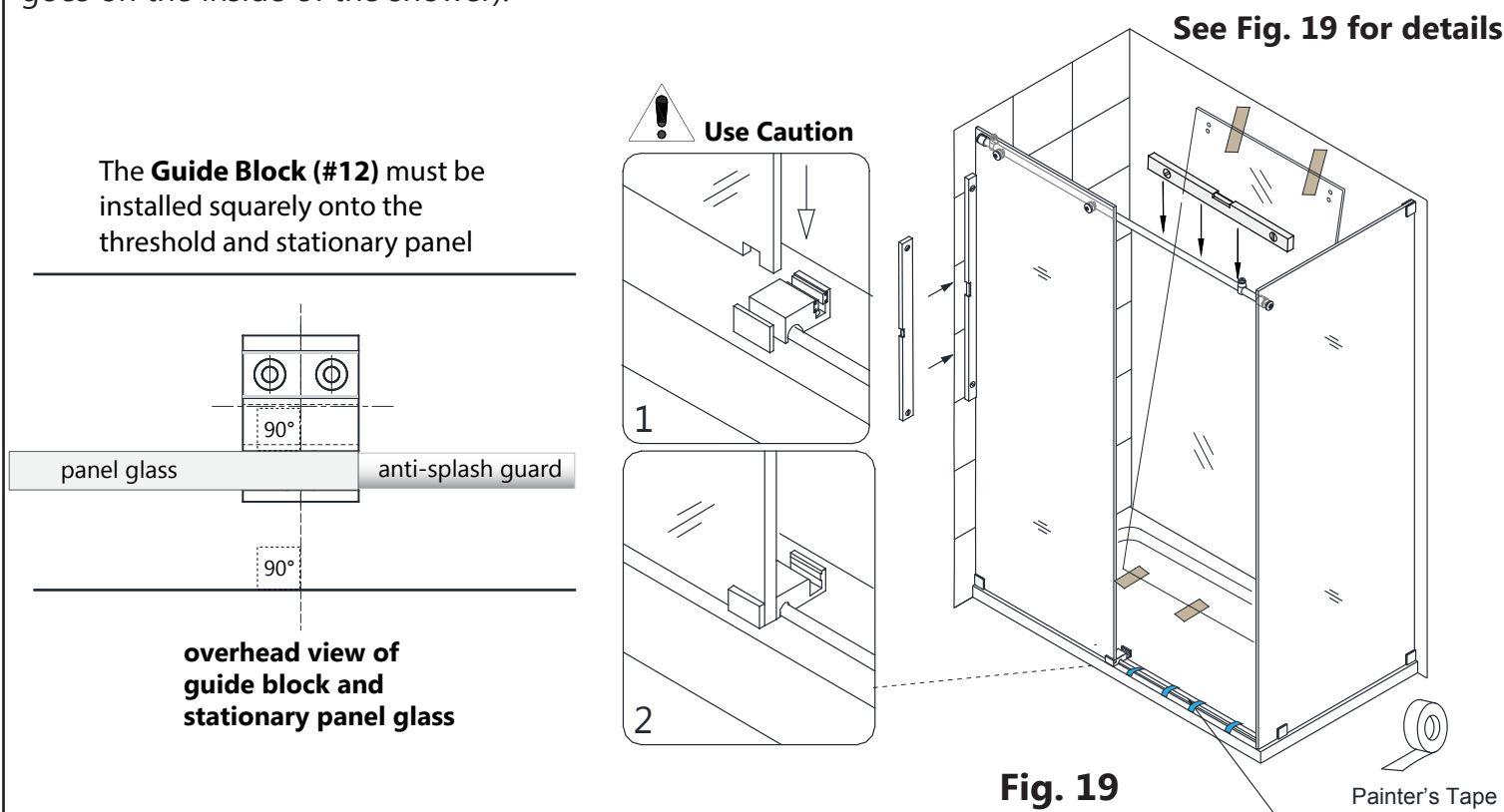


Fig. 18



See Fig. 18 for details

18. Carefully place the **Stationary glass (#02)** with the **Upper Guide Rail (#03)** onto the threshold with the notch fitting into the **Guide block (#12)**. Position the **Stationary glass (#02)** against the wall. (Please note that the **Stationary Glass (#02)** installs on the outside and the **Upper guide rail (#03)** goes on the inside of the shower).



19. Re-position the **Stationary glass (#02)** and **Upper Guide rail (#03)** onto the threshold and fasten the sleeves of the **Guide rail brackets (#08)** to the bracket on the wall and to the **Glass Connector (#21)** on the **Return Panel Glass (#22)**.

Tighten the set screws on the **Guide rail brackets (#08)** to secure the **Upper Guide rail (#03)**. Position the bracket set screws so that they are accessible from the top and bottom. (As shown in **Step 16, Fig. 17**).

Assemble the **Wall bracket (#19)** at the bottom corner of the **Stationary glass (#02)**. Use the clear vinyl gasket between the glass and the metal parts to avoid contact with the glass, then tighten the bolt with the supplied allen wrench.

See Fig. 20 for details

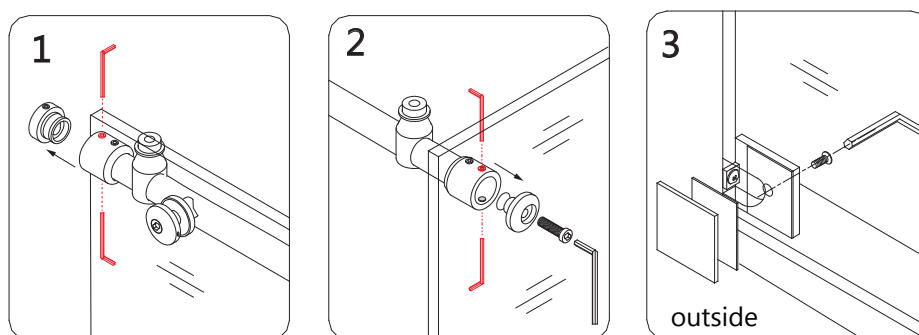


Fig. 20

20. Fasten the **Guide block (#12)** to the threshold with the **Countersunk screws ST4.2×25 (#17)**.

See Fig. 21 for details

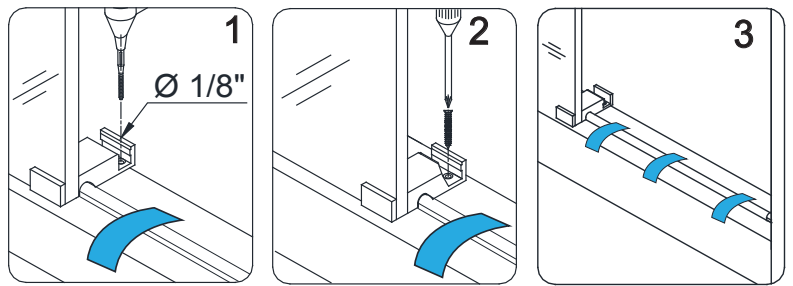
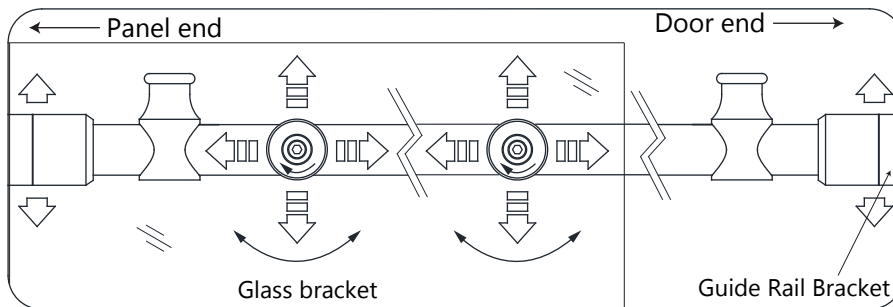


Fig. 21

TIP: Level the installed **Upper Guide rail (#03)** as necessary using the **Guide rail brackets (#08)** first and then the **Glass brackets (#07)**. Start adjustments from the door end.

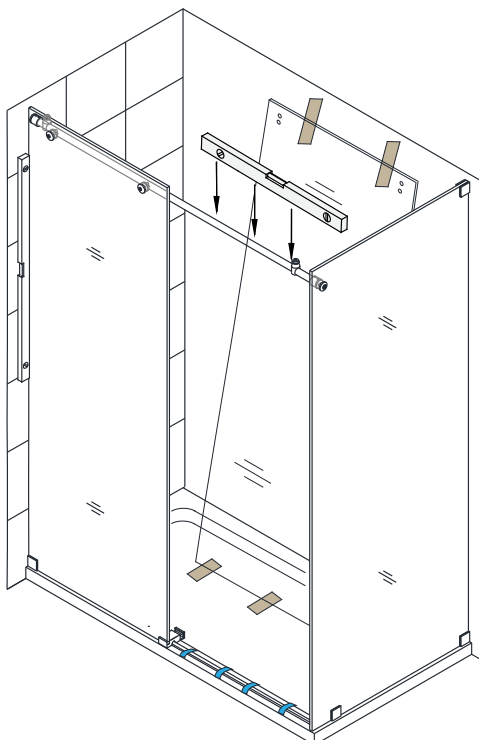
See Fig. 22 and Fig. 23 for details



(Right hand door installation shown as example)

Fig. 22

NOTE: Use the **Guide Rail Bracket (#08)** set screws to adjust the **Guide Rail (#03)** for level.



Loosen the top set screw and tighten the bottom set screw to lower the rail.

Loosen the bottom set screw and tighten the top set screw to raise the rail.

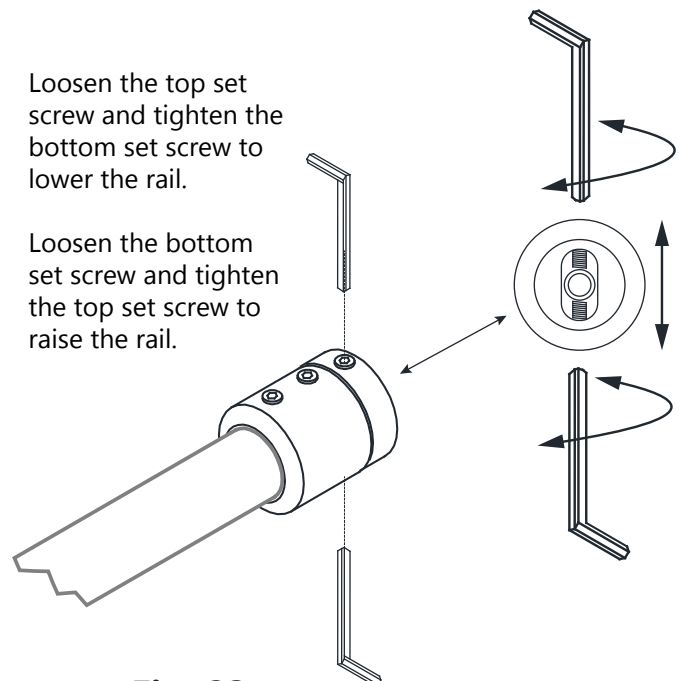
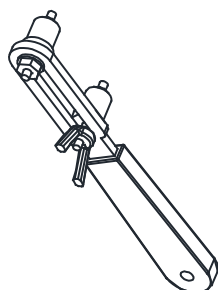


Fig. 23

21. Use the **Roller Installation tool** to install the two **Roller assemblies (#04)** to the **Door Glass (#05)** (**Fig 18.1**). Suspend the door by hanging the **Roller assemblies (#04)** onto the **Upper guide rail (#03)** and sliding the bottom edge of the **Door Glass (#05)** into the groove of the **Guide block (#12)**. **Be careful not to damage the bottom edge of the door glass.** Adjust the door glass if necessary using the set screws on the rollers as shown below in **Fig. 24** and **Fig. 25**. After hanging the door, **the Roller Guards must be adjusted to within 1/16" of the Guide Rail (#03) to prevent the door from being removed.** Tighten all set screws.

See Fig. 24 and Fig. 25 for details

TIP: Place a 1/4" shim on the threshold beneath the door glass when you adjust the level of the installed door glass so the bottom of the glass does not make contact with the guide block.



Roller Installation
Tool

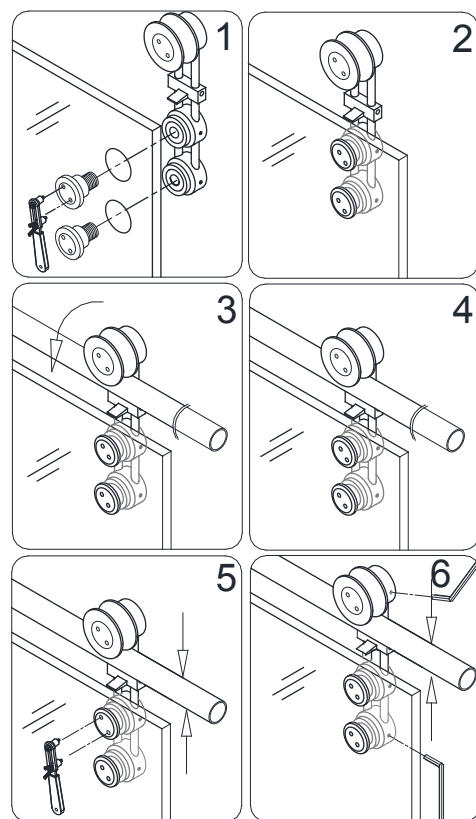


Fig. 24

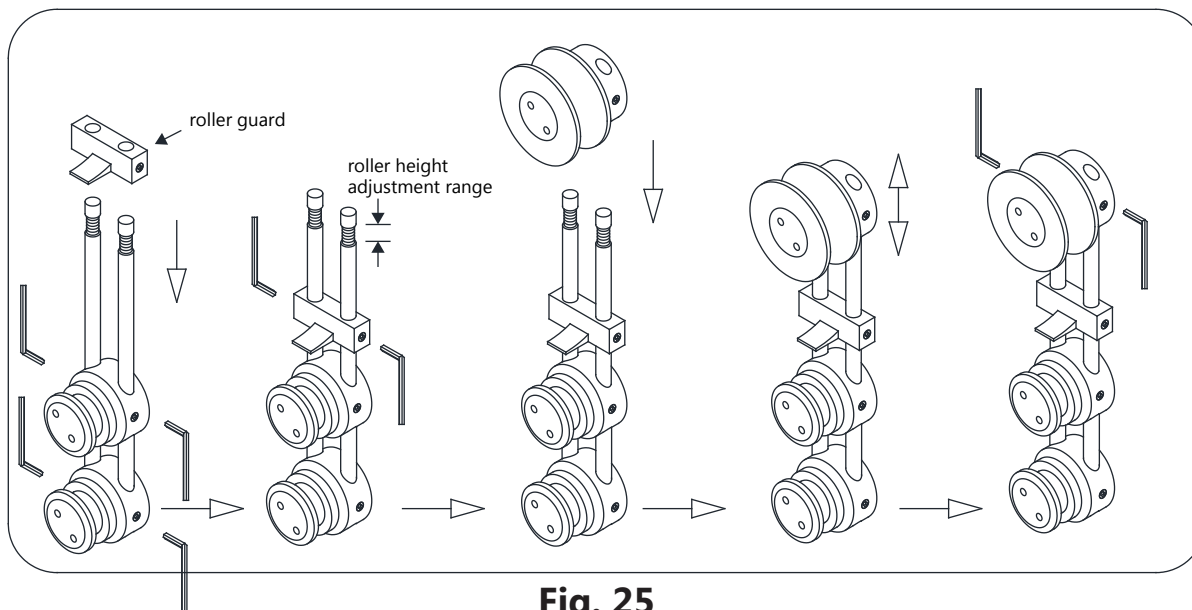


Fig. 25

NOTE: Adjust the height of the door if necessary by loosening the set screws on either side of the wheel. Move the door glass to the proper height and re-tighten the set screws. **Be sure to support the weight of door glass during the process.**

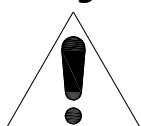
TIP: During adjustment you must support the door glass so that it does not make contact with the guide block. Leave approximately 1/8" of space between the bottom of the glass and the guide block, (or 1/4" clearance between the bottom of the glass and the threshold.) Use a 1/4" shim on the threshold to prevent adjusting the door glass too low.

22. Press the **Anti-water strip (#14)** onto the vertical edges of the **Stationary glass (#02)** and the **Door glass (#05)**. Also press the **Bumper seal strip (#13)** onto the vertical edge of the **Door glass (#05)**.

Mount the **Handle (#06)** to the **Door Glass (#05)**.

Adjust both **Door stoppers (#01)** to ensure that they are positioned upright and the **Door glass (#05)** is in its maximum opening and closing range. **Apply thread lock to the stopper set screws and tighten the set screws to fasten them in place.**

Adjust the **Roller guards (Fig 18)** on both **Roller assemblies (#04)** to within 1/16" of the **Upper guide rail (#03)** to ensure that the **Door glass (#05)** is secure.



See Fig. 26 for details

NOTE: The **Door stoppers (#01)** must be positioned correctly to prevent the handle from contacting the **Stationary glass (#02)** and to stop the **Door glass (#05)** in a position that allows the bumper strip to create a seal with the return panel glass, but does not allow the door glass to bang into the return panel glass. Observe the correct position of these stoppers and re-adjust if necessary.

23. Door Stopper Installation:

1. Loosen the set screw
2. Slide the **Door Stopper (#01)** onto the **Upper Guide Rail (#03)**
3. Align with stopper hole (stationary panel side only)
4. Apply **Thread lock adhesive (#20)** to the set screw threads
5. Tighten screw into the stopper hole (stationary panel side only)
6. Correctly position and tighten screw into the stopper (door side)

See Fig. 27 for details

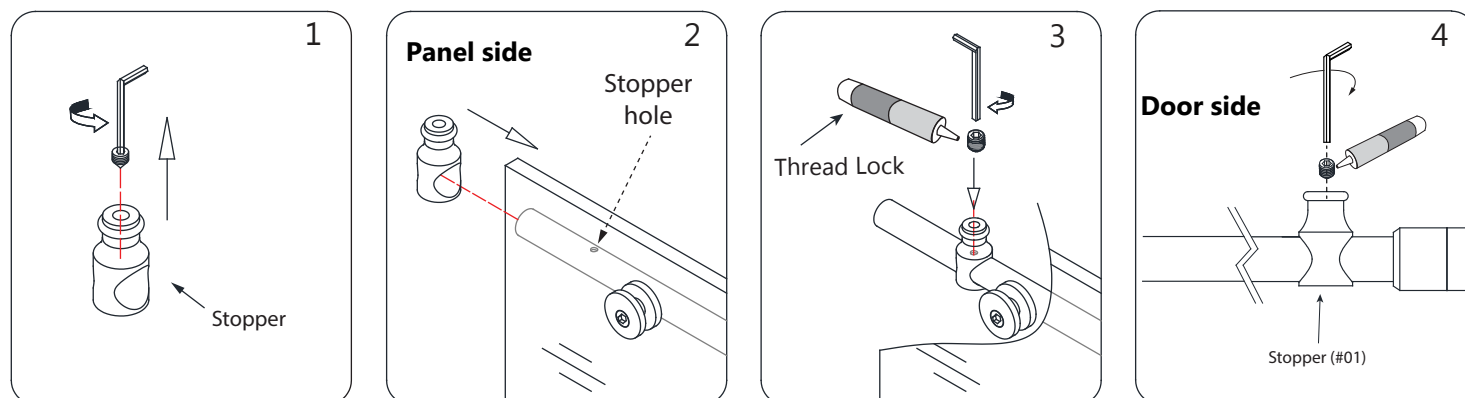


Fig. 27 (Right hand door installation shown as an example)

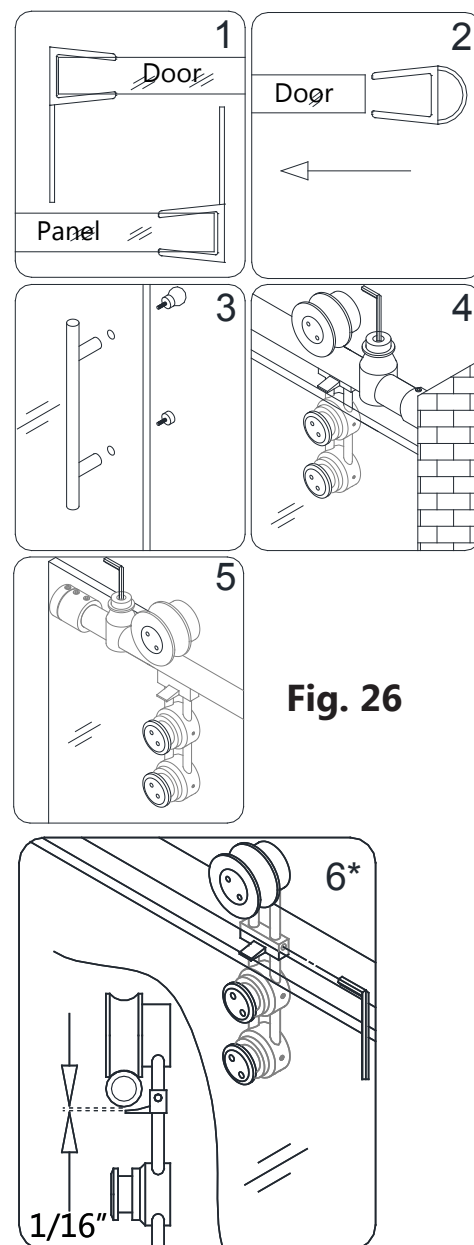
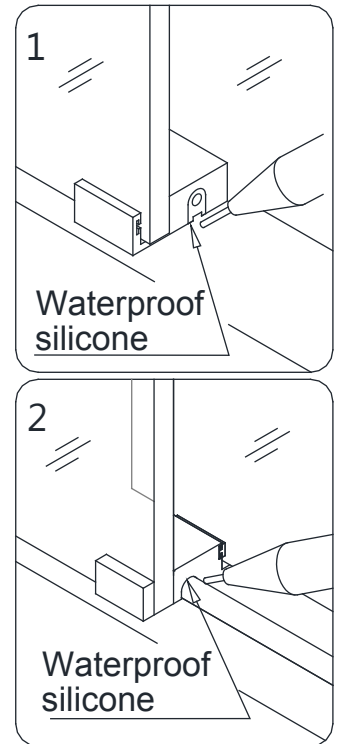


Fig. 26

*Roller guards must be tight and the distance beneath the guide rail should be approximately 1/16"

24. Apply Waterproof silicone at both ends of the **Anti-splash guard (#15)**, around the **Guide block (#12)** and around the **Anti-splash guard cap (#16)**.

See Fig. 28 for details



25. Apply a good quality mildew resistant silicone sealant where the panel glass meets the wall and the threshold.

Allow 24 hours for the silicone to fully cure.

See Fig. 29 for details

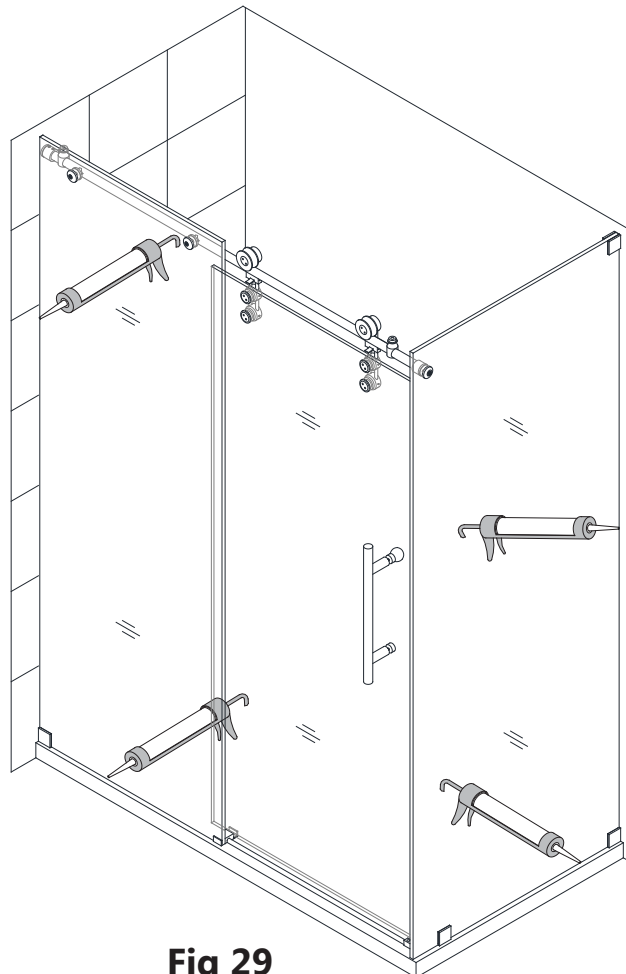


Fig 29

Fig. 28

Product Maintenance

BASES and BACKWALLS: To ensure long lasting life for your acrylic back walls: wipe them off after each use with a soft cloth. To clean the acrylic back walls use non-abrasive sprays or cream based cleaners. Avoid the use of aerosol spray cleaners. Never use abrasive cleansers, metal brushes or scrapers that could scratch or dull the surface.

GLASS: To ensure long lasting life for your glass shower products: wipe them off after each use with a soft cloth. Rinse and wipe off the glass using either a soft cloth or a squeegee to prevent soap buildup and water spots (Hard water can etch the surface of the glass over time if left to dry). To prevent scratching the surface: never use abrasive cleaners or cleaning products that contain scouring agents. Never use bristle brushes or abrasive sponges that may scratch the surface.

HARDWARE: To ensure a long lasting finish: wipe off the metal parts after each use with a soft cloth. Do not use abrasive cleaners or cleaning products containing ammonia, bleach or acid. If accidentally used, rinse the surface as soon as possible to prevent damage to the finish (peeling or corrosion). After cleaning the polished finishes, rinse thoroughly and wipe dry with soft cloth. Clean stainless steel surfaces at least once a week. When applying stainless steel cleaner or polish to stainless steel hardware, work with (not across) the grain. Never use an abrasive sponge or cloth, steel wool or wired brush as these may permanently scratch the surfaces.

NOTE: To maximize the life of your door, it is important to regularly inspect the glass and other hardware for misalignment, proper attachment, and/or damage. Contact DreamLine with any questions or concerns.



TEL: 866-731-2244
FAX: 866-857-3638
DREAMLINE.COM

For more information on DreamLine® Shower Doors and Enclosure please visit **DreamLine.com**