



FRENCH LINEA PANEL

SHOWER PANEL INSTALLATION INSTRUCTIONS

IMPORTANT

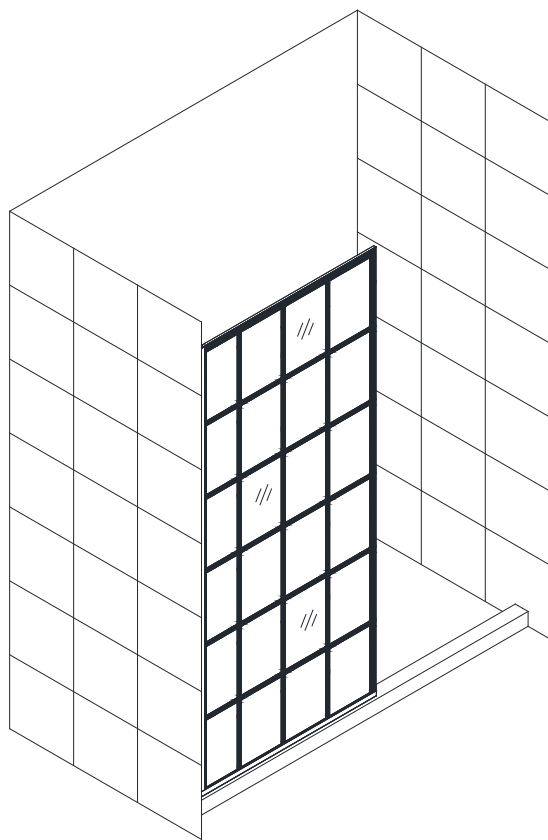
DreamLine® reserves the right to alter, modify or redesign products at any time without prior notice. For the latest up-to-date technical drawings, manuals, warranty information or additional details please refer to your model's web page on **DreamLine.com**

MODEL

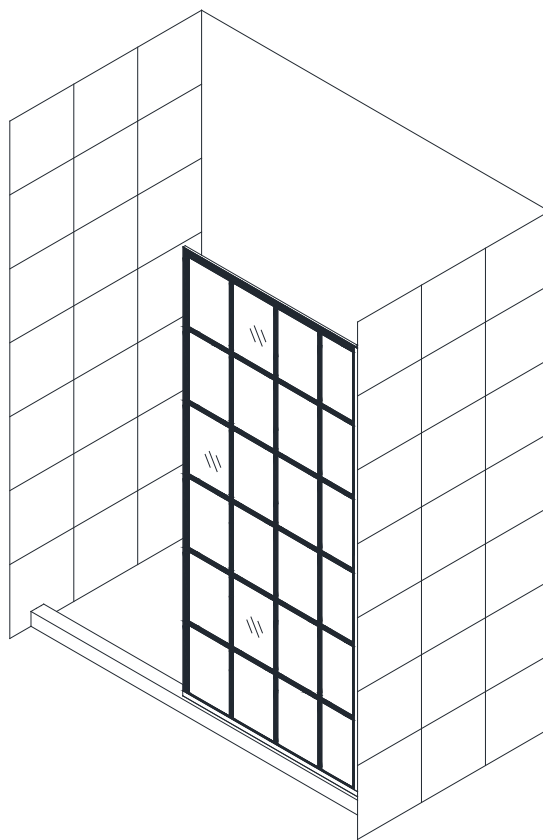
SHDR-3234721-##

= finish:

89 - French Black



Left wall installation



Right wall installation



Questions?

Please Call **DreamLine** Customer Support: **1-855-831-2126**
Hours of Operation M-F 8AM - 7PM EST and Saturday 9AM - 5PM EST

Support@DreamLine.com



For more information about DreamLine® Shower Doors & Tub Doors please visit **DreamLine.com**



This model is treated with DreamLine's exclusive ClearMax™ Glass technology. This is a specially formulated coating that prevents the build up of soap and water spots.

Install the surface with the ClearMax™ label towards the inside of the shower. Please note that depending on the model, the glass may be coated on either one or both surfaces.

For best results, squeegee the glass after each use and dry with a soft cloth.

Preparation

1. Prior to installation, examine all boxes and packages for shipping damage and compare piece count with your packing slip. After opening all boxes and packages, read this introduction carefully. Check that all of the needed parts are included in the package by marking all the components on the "Detailed Diagram of Shower Door Components". If the unit has been damaged, has a finishing defect, or has missing parts, please contact our customer support department within **3 business days** of the delivery date. **Please note that DreamLine® will not replace any damaged products or missing parts free of charge after 3 business days or if the product has been installed.** Feel free to contact DreamLine® if you have any questions and please provide a purchase order #, name or other proof of purchase to help identify the original order.

2. **Please note that you should consult your local building codes with questions on installation compliance standards. Building and plumbing codes may vary by location, and DreamLine® is not responsible for code compliance standards for your project and will not accept any returns.**

3. If this unit is going to be installed in new construction, please install all of the required plumbing and drainage before installing the shower. **Use a competent and licensed (if required by local code) plumber for all plumbing installation.**

4. Please make sure that prior to beginning the installation, the surfaces are leveled and solid and will be able to support the total weight of the unit. Also make sure the walls are at right angles. Irregular installation surface level, radius corners or improper angle of side walls will result in serious problems for your installation. Please, note that some adjustments and drilling might be necessary during the installation process.

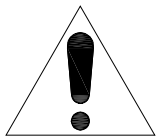
5. Please protect all primary surfaces of the product during installation. Never set your glass down directly onto a tile floor. Leave corner protectors in place until necessary to remove them. Always use a piece of wood or cardboard to protect the bottom edge and corners of the glass prior to and during installation.

6. **Installation of this model requires that you drill down into the threshold or shower base.**

7. Stationary glass panel size of **34" is a nominal dimension** referring to the overall size of the installed panel and not the actual glass size.

8. The vertical (wall) u-channel will provide up to **1/2"** of out-of-plumb adjustment. **Do not exceed this tolerance.**

9. **Installation into a stud behind the wall is recommended.**



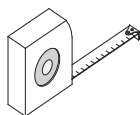
**The safety of any installation is the responsibility of the installer.
Professional installation recommended.
To prevent serious injury, do not lean against the installed panel glass.**

NOTE: This model is fully reversible. The **Left wall installation is shown** as an example in the following installation steps. For Right wall installation, simply reverse the orientation of your installation and begin on the opposite wall.

Tools



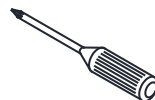
Level



Tape Measure



Pencil



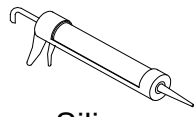
Phillips Screwdriver



Drill bit (Ø=5/16")



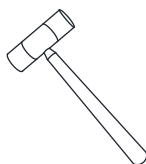
Drill bit (Ø=1/8")



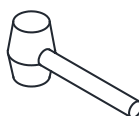
Silicone



Power Drill



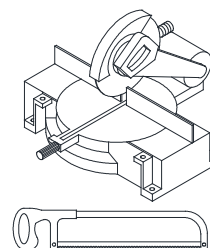
Soft Head Hammer



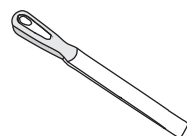
Mallet



Wood

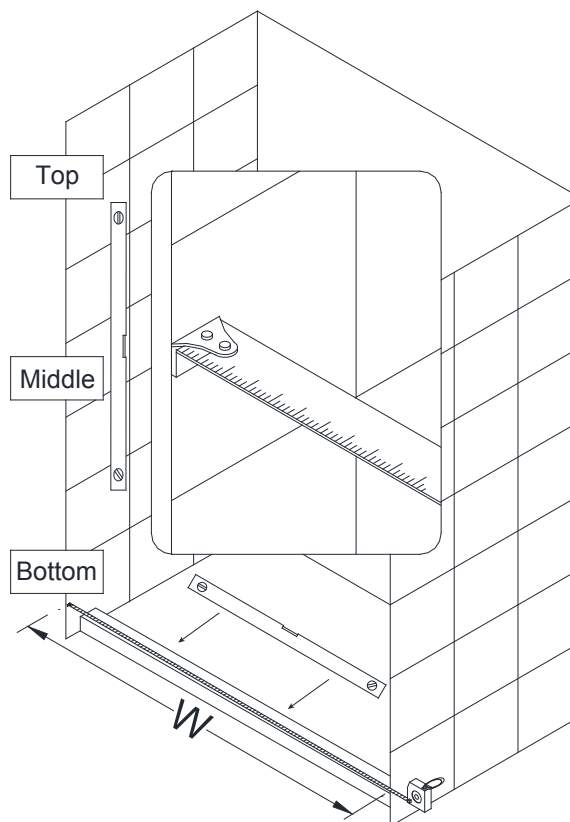


Miter saw or Hacksaw



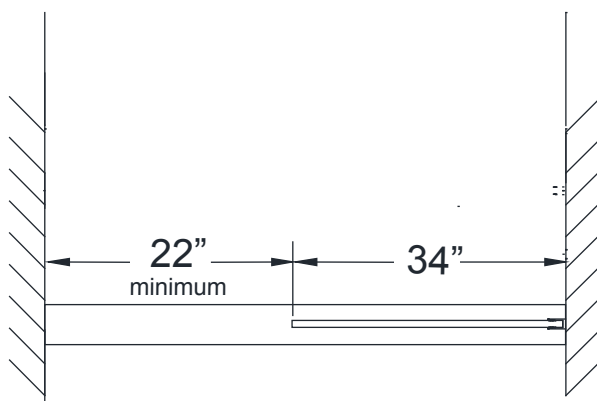
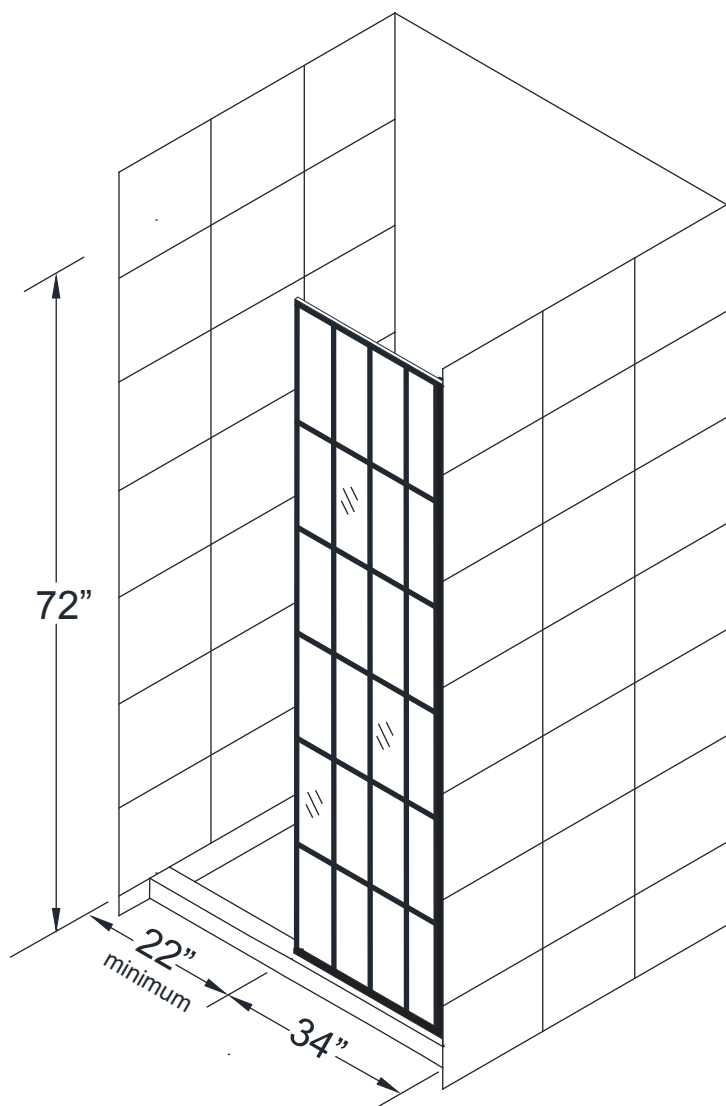
Metal File

Tip: Measure the finished opening before proceeding with the installation to be sure that the correct model size has been ordered.



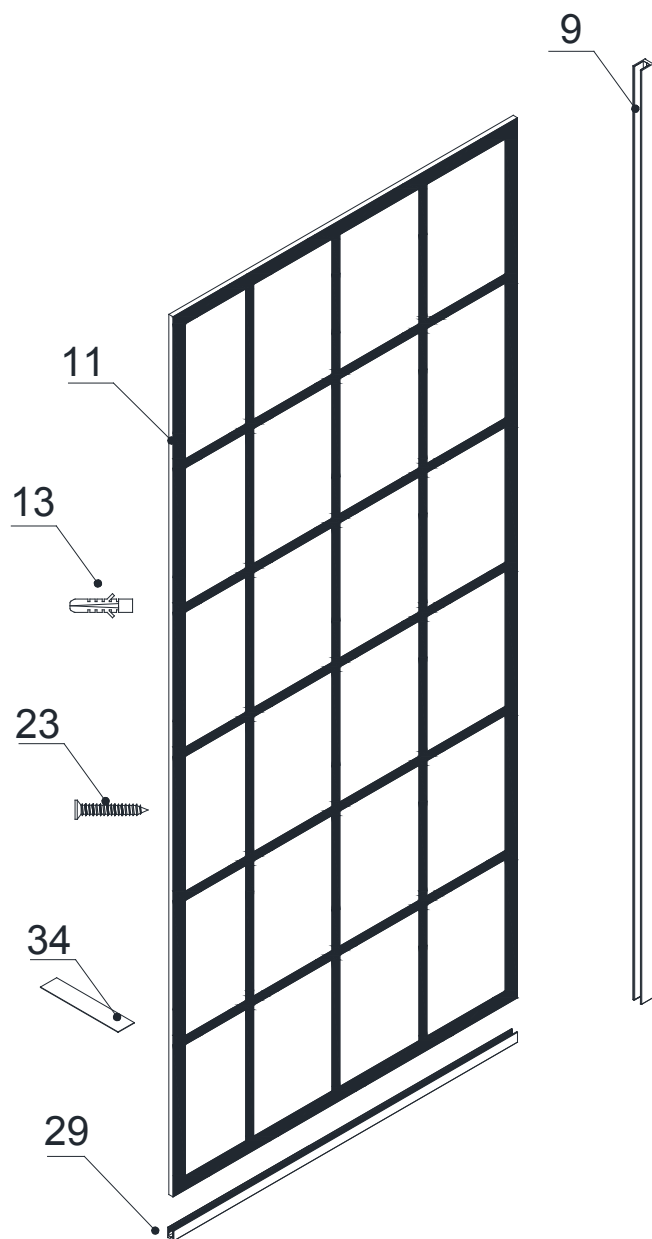
NOTE: Unpack your unit carefully and inspect it. Lay it out and identify all parts using the detailed diagram and packing list in this manual as a reference. Before discarding the carton, check for small hardware bags that may have fallen to the bottom of the box. If any parts are damaged or missing, please contact DreamLine® for replacement. The shipping boxes may contain extra parts not used in your model configuration.

NOTE: Retain these installation instructions for future reference.



NOTE: It is advisable to install this 34" x 72" stationary panel into a finished opening that will allow at least 22" of clear unobstructed access into the shower area.

Detailed Diagram of shower door components



The glass surface
with the ClearMax™
label must be
installed to face
inside of the shower

Parts List

Part#	Description	Qty	Part#	Description	Qty
09	U-channel 1 (73", wall profile)	1pc	23	Countersunk screw ST4.2x40	8 pcs
11	Stationary glass (34")	1pc	29	U-channel 2 (36", bottom profile)	1pc
13	Ø5/16" Wall anchor	8pcs	34	0.5mm Adjustment Spacer x36"	1pc

Installation steps

34" In-Line Stationary Panel Installation

1. Trim the 0.5mm Adjustment spacer (#34) into several 2" pieces. Insert three to four 2" pieces of the 0.5mm adjustment spacers (#34) into the U-channel 2 (#29) (bottom profile). These are used as setting blocks to protect the bottom edge of the glass.

- Slip the **U-channel 2 (#29) (bottom profile)** and **U-channel 1 (#09) (wall profile)** onto the **Stationary glass (#11)** as shown.
- Place the **Stationary glass (#11)** with the **U-channels 1 & 2** onto the threshold (Fig 1.2).
- Adjust the **Stationary glass (#11)** and **U-channel 1 (#09) (wall profile)** against the wall to compensate for any out of plumb conditions, (not to exceed 1/2") ensuring that the **Stationary glass (#11)** is level vertically (plumb) and **U-channel 1 (#09)** is tight to the wall.
- Make certain that your bottom channel is parallel to the outside of your threshold. Use a level while adjusting your glass to verify that it is plumb.

See Fig. 1 for details

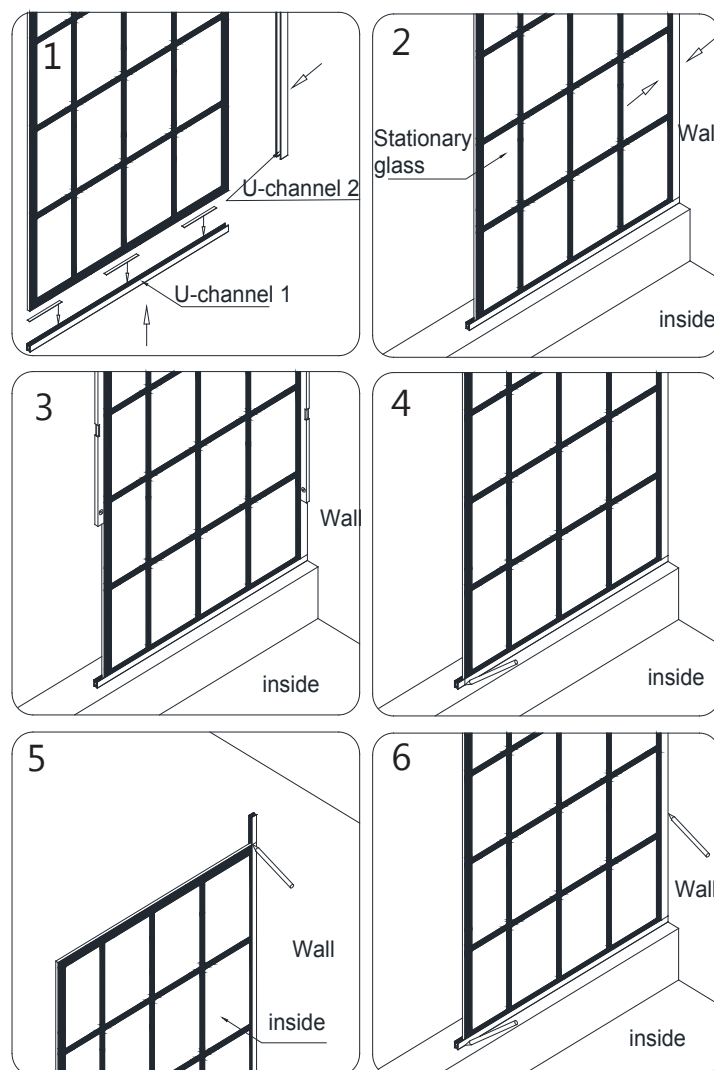


Fig 1

2. Mark the end of the U-channel 2 (#29) (bottom profile) opposite of the wall at the exposed vertical glass edge.

- Mark the top of **U-channel 1 (#09) (wall profile)** flush with the top of the glass (Fig 1.4).
- Mark the position of both u-channels on the wall and threshold from inside the shower area (Fig 1.6).

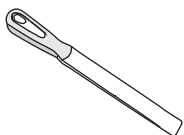
See Fig. 1 for details

NOTE: Additional **0.5mm Adjustment spacers (#34)** can be used in the bottom u-channel (up to 1/4" max) to assist in leveling the glass.

3. Remove the **U-channel 2 (#29) (bottom profile)** and the **U-channel 1 (#09) (wall profile)** and carefully set the **Stationary glass (#11)** aside.

- Cut the **U-channel 2 (#29) (bottom profile)** and the **U-channel 1 (#09) (wall profile)** to marked lengths.
- Use a metal file to remove any burrs from the cut ends and eliminate any stray metal shavings from the u-channels before placing them onto the glass.

See Fig 2 for details



Metal File

4. Position the **U-channel 2 (#29) (bottom profile)** onto the threshold along your line and mark the position of the holes for drilling. Use at least 3 holes for the **U-channel 2 (#29) (bottom profile)**: one near each end and one near the center.

- Drill the holes into the threshold using an **Ø1/8"** drill bit.
- Apply a bead of silicone to the bottom of the **U-channel 2 (#29) (bottom profile)** and attach it to the threshold using the **ST4.2 x 40mm screws (#23)**.

See Fig 3 for details

NOTE: If installing into a tile threshold, drill **Ø5/16"** holes and insert anchors.

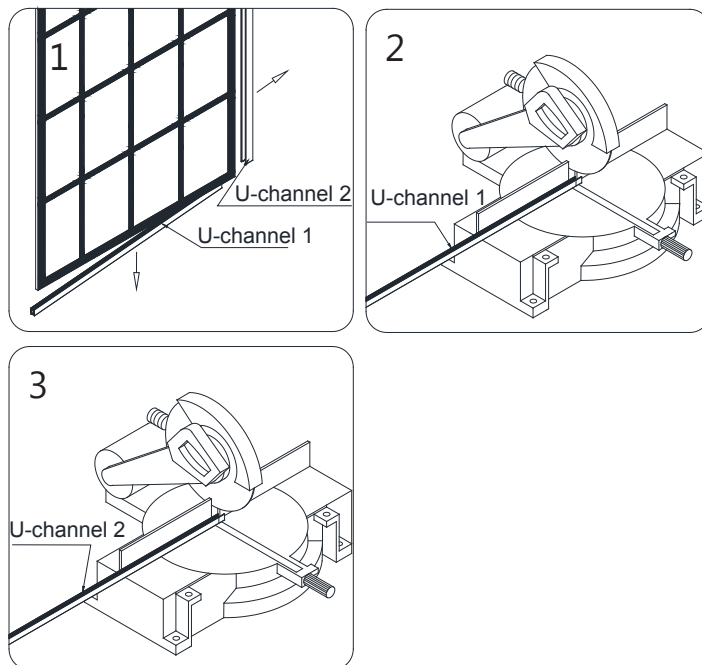


Fig 2

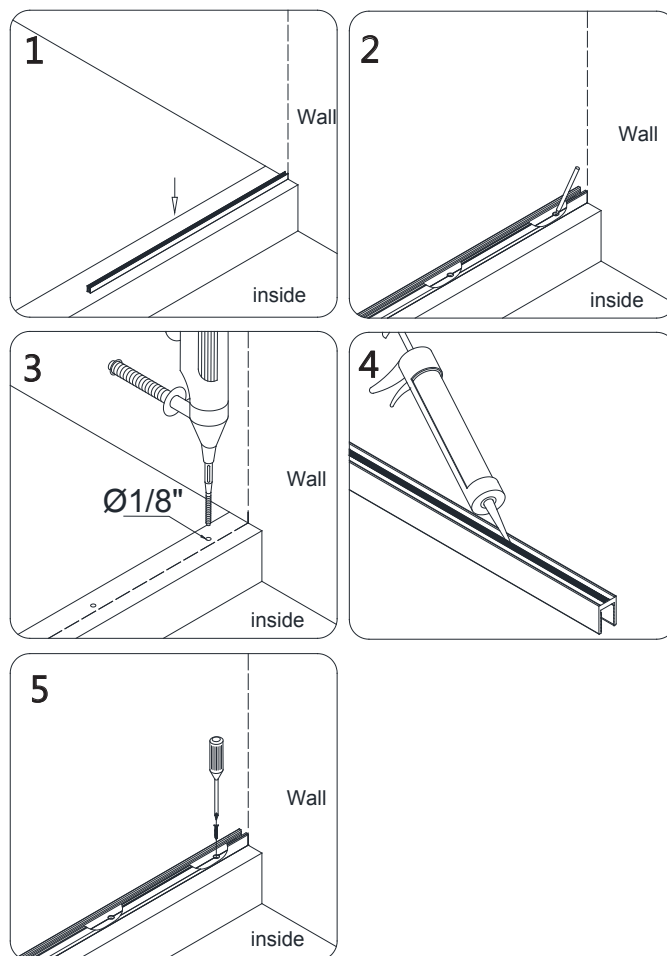


Fig 3

5. Next, position the **U-channel 1 (#09) (wall profile)** along the vertical line on the wall and mark the position of the holes for drilling. Use at least four holes for the **U-channel 1 (#09) (wall profile)**.

- Drill the holes into the wall using a **Ø5/16"** drill bit.
- Insert the **Wall anchors (#13)** into the 5/16" holes.
- Apply silicone to the back of the **U-channel 1 (#09) (wall profile)** and attach it to the wall using the **ST4.2 x 40mm screws (#23)**.

See Fig 4 for details

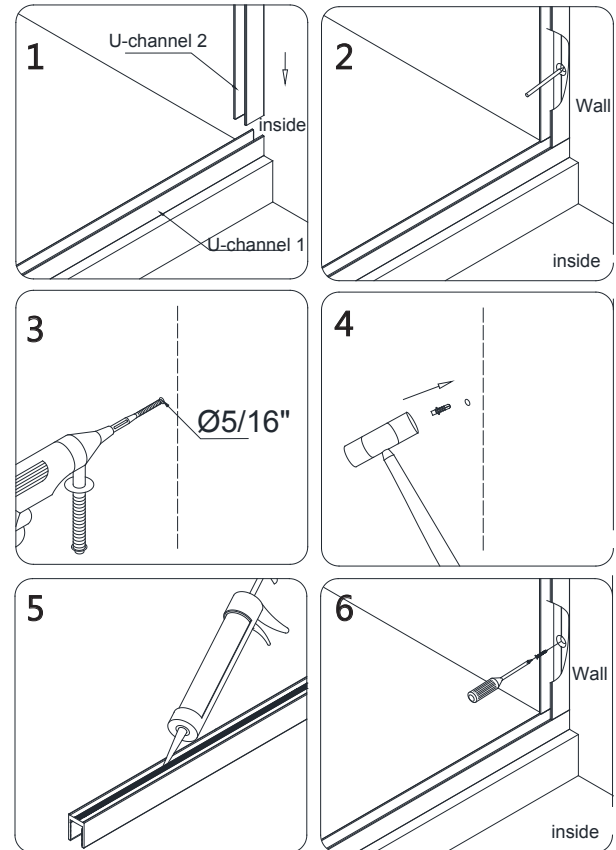


Fig 4

6. Apply good quality mildew resistant silicone into both u-channels.

- Add the **0.5mm Adjustment spacers (#34)** from step#2 into to **U-channel 2 (#29) (bottom profile)** (Fig 5.3)
- Install the **Stationary glass (#11)** into **U-channel 2 (#29) (bottom profile)** and the **U-channel 1 (#09) (wall profile)**. You may gently tap on the glass using a block of wood and a mallet. Do Not hit the corner of the glass panel. Apply silicone to the exposed ends of the U-channel (Fig. 5.6)

See Fig 5 for details

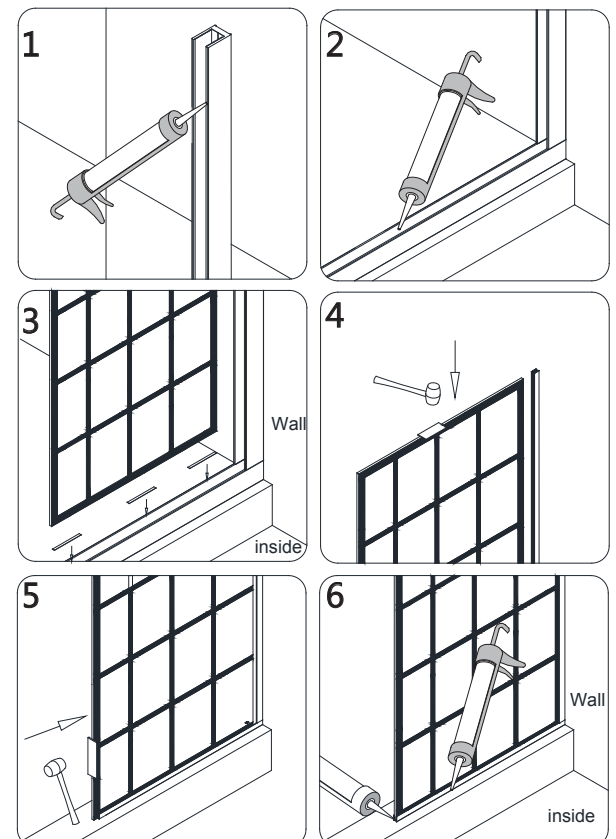


Fig 5

7. Apply a good quality mildew resistant silicone along the U-channel where it meets the wall and threshold from inside of the shower. You may also apply silicone along the outside if desired.

Allow 24 hours for the silicone to fully cure before using the shower.

See Fig 6 for details

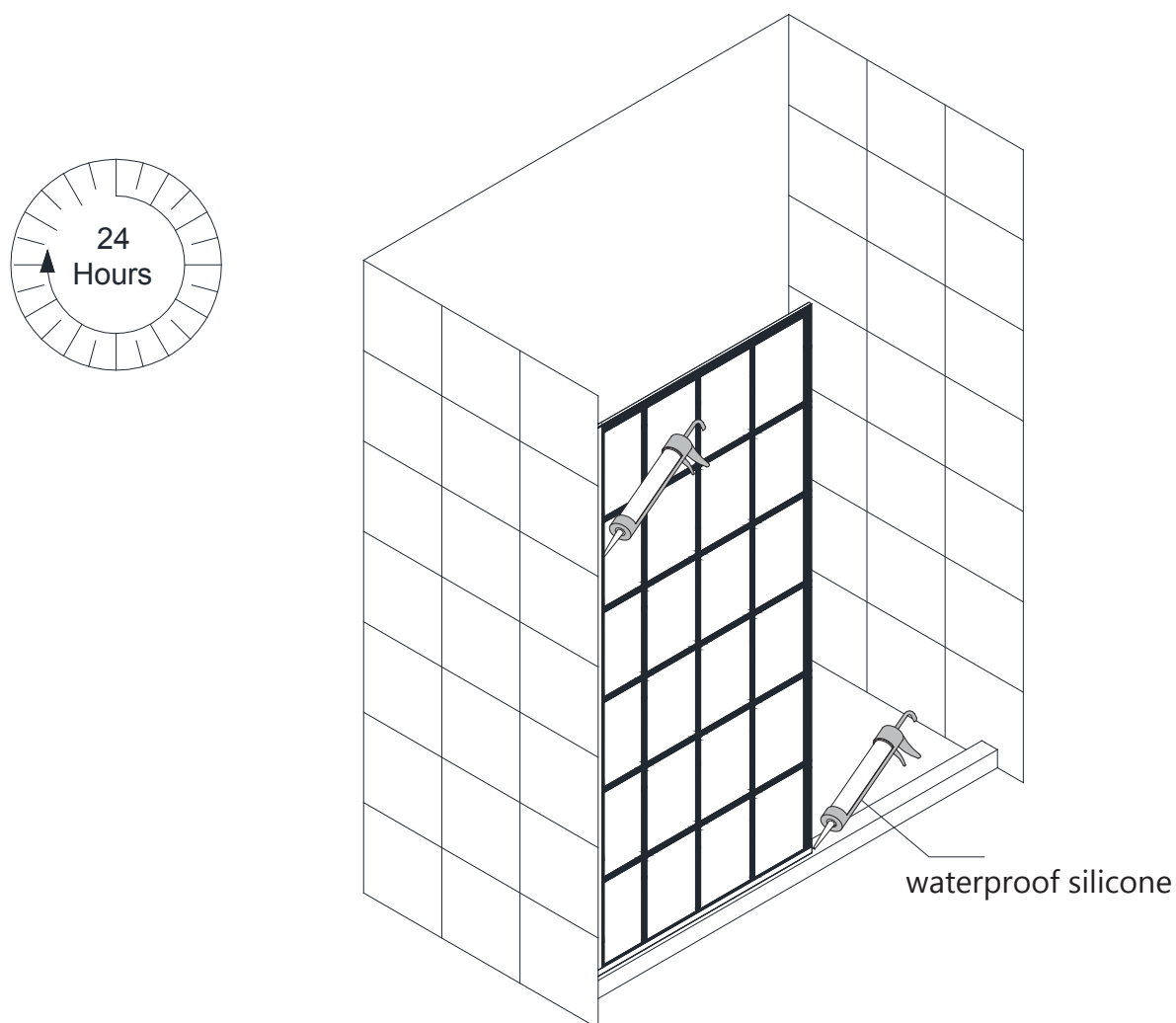


Fig 6

Product Maintenance

BASES and BACKWALLS: To ensure long lasting life for your acrylic back walls: wipe them off after each use with a soft cloth. To clean the acrylic back walls use non-abrasive sprays or cream based cleaners. Avoid the use of aerosol spray cleaners. Never use abrasive cleansers, metal brushes or scrapers that could scratch or dull the surface.

GLASS: To ensure long lasting life for your glass shower products: wipe them off after each use with a soft cloth. Rinse and wipe off the glass using either a soft cloth or a squeegee to prevent soap buildup and water spots (Hard water can etch the surface of the glass over time if left to dry). To prevent scratching the surface: never use abrasive cleaners or cleaning products that contain scouring agents. Never use bristle brushes or abrasive sponges that may scratch the surface.

HARDWARE: To ensure a long lasting finish: wipe off the metal parts after each use with a soft cloth. Do not use abrasive cleaners or cleaning products containing ammonia, bleach or acid. If accidentally used, rinse the surface as soon as possible to prevent damage to the finish (peeling or corrosion). After cleaning the polished finishes, rinse thoroughly and wipe dry with soft cloth. Clean stainless steel surfaces at least once a week. When applying stainless steel cleaner or polish to stainless steel hardware, work with (not across) the grain. Never use an abrasive sponge or cloth, steel wool or wired brush as these may permanently scratch the surfaces.

NOTE: To maximize the life of your door, it is important to regularly inspect the glass and all hardware for misalignment, proper attachment, and/or damage. Contact DreamLine with any questions or concerns.



TEL: 866-731-2244
FAX: 866-857-3638
DREAMLINE.COM

For more information on DreamLine® Shower Doors and Enclosures please visit **DreamLine.com**