

OVAL TYPE B GAS VENT

Oval Installation Kit

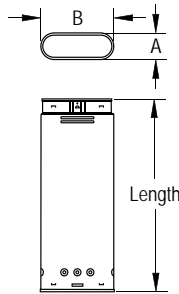


Kit includes: Oval Base Plate and (2) Oval Ceiling Plate Spacers.

Use for wall furnaces installed in a single-story application.

SIZE	ORDER #	STOCK #
4"	5GWK	319

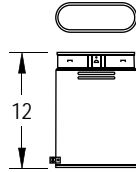
Oval Rigid Pipe



Use for venting listed natural gas or liquid propane Category I, draft hood appliances, or appliances that have been specifically tested and listed to use Type B Gas Vent. The appliances listed typically use Type B Gas Vent systems, but not always: Furnaces, Water Heaters, Boilers, Room Heaters, Decorative Gas Appliances, and Unit Heaters. Designed to be placed within 2" x 4" stud walls (4" and 5" oval pipe). 6" may only be placed in a 2" x 6" 16" O.C. stud space.

SIZE	LENGTH	ORDER #	STOCK #	A	B
4"	6"	4GW06	305	2 1/2"	7 1/4"
4"	12"	4GW12	304	2 1/2"	7 1/4"
4"	18"	4GW18	303	2 1/2"	7 1/4"
4"	24"	4GW24	307	2 1/2"	7 1/4"
4"	36"	4GW36	302	2 1/2"	7 1/4"
4"	48"	4GW48	301	2 1/2"	7 1/4"
4"	60"	4GW60	300	2 1/2"	7 1/4"
5"	6"	5GW06	505	3 1/8"	10 7/8"
5"	12"	5GW12	504	3 1/8"	10 7/8"
5"	18"	5GW18	503	3 1/8"	10 7/8"
5"	24"	5GW24	507	3 1/8"	10 7/8"
5"	36"	5GW36	502	3 1/8"	10 7/8"
5"	48"	5GW48	501	3 1/8"	10 7/8"
5"	60"	5GW60	500	3 1/8"	10 7/8"
6"	6"	6GW06	605	3 1/4"	11 7/8"
6"	12"	6GW12	604	3 1/4"	11 7/8"
6"	18"	6GW18	603	3 1/4"	11 7/8"
6"	24"	6GW24	607	3 1/4"	11 7/8"
6"	36"	6GW36	602	3 1/4"	11 7/8"
6"	48"	6GW48	601	3 1/4"	11 7/8"
6"	60"	6GW60	600	3 1/4"	11 7/8"

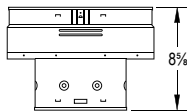
Oval Adjustable Pipe



Use to add length to a straight length of Oval Type B Gas Vent Pipe. Adjusts from 4"-10". Requires a 2" overlap.

SIZE	LENGTH	STOCK #	ORDER #
4"	12"	4GW12A	306
5"	12"	5GW12A	506
6"	12"	6GW12A	606

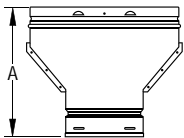
Oval Increaser



Use to increase oval vent diameter.

SIZE	STOCK #	ORDER #
4" x 5"	4GWX5	419
5" x 6"	5GWX6	519
4" x 6"	4GWX6	619

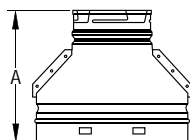
Round To Oval Adapter



Use to convert from round to oval vent.

SIZE	STOCK #	ORDER #	A
3" to 4"	4GWAR3	324	9 1/4"
4"	4GWAR0	315	9 1/4"
5"	5GWAR0	515	9 3/8"
6"	6GWAR0	615	11 1/2"

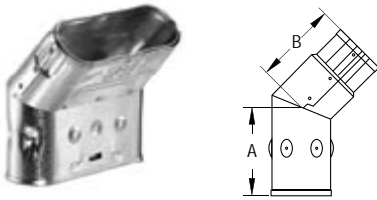
Oval To Round Adapter



Use to convert from oval to round vent.

SIZE	STOCK #	ORDER #	A
4"	4GWAOR	314	9 1/4"
5"	5GWAOR	514	9 7/8"
6"	6GWAOR	614	10"

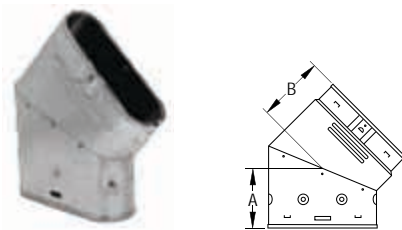
Oval 45° Elbow - Standard



Offsets obstructions as needed. Not adjustable.

SIZE	STOCK #	ORDER #	A	B
4"	4GWL45	310	3 5/8"	3 1/2"
5"	5GWL45	510	4 1/8"	5"
6"	6GWL45	610	5"	5"

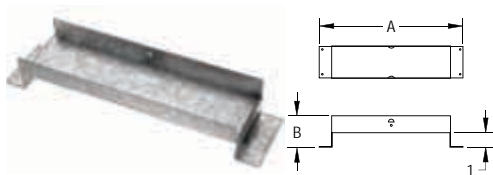
Oval 45° Elbow - Flat



Offsets obstructions as needed. Not adjustable.

SIZE	STOCK #	ORDER #	A	B
4"	4GWL45F	311	4 1/2"	4 1/8"
5"	5GWL45F	511	5 1/4"	5 5/8"
6"	6GWL45F	611	5 3/4"	4 3/4"

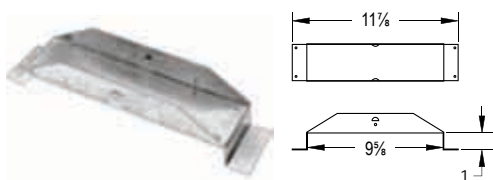
Oval Tee Support - Plain



Use to support and center Oval Tee. Use with Oval Tee Cap.

SIZE	STOCK #	ORDER #	A	B
5"	5GWTS	521	13 7/8"	2 1/8"
6"	6GWTS	621	13 7/8"	2 1/8"

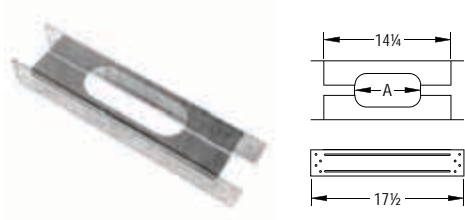
Oval Tee Support - Base Plate



Use to support and center Oval Tee. Use with Oval Tee Cap.

SIZE	STOCK #	ORDER #	A	B
4"	4GWPS	308	9 5/8"	11 7/8"

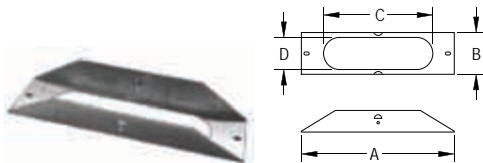
Oval Firestop Spacer



Use to center oval vent in a minimum 16" on-center stud space. Serves as a firestop at the ceiling level. Required in multi-story installations.

SIZE	STOCK #	ORDER #	A
4"	4GWFS	350	7 1/2"
4"	4GWFS2X6	351	7 1/2"
5"	5GWFS	522	11"
5"	5GWFS2X6	523	11"
6"	6GWFS	622	12 1/8"

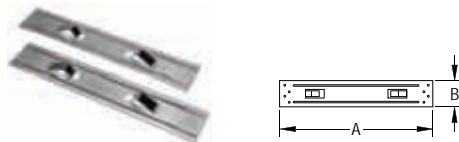
Oval Base Plate



Use to attach oval vent to a wall furnace.

SIZE	STOCK #	ORDER #	A	B	C	D
4"	4GWBP	321	9 5/8"	2 3/8"	6 7/8"	2"

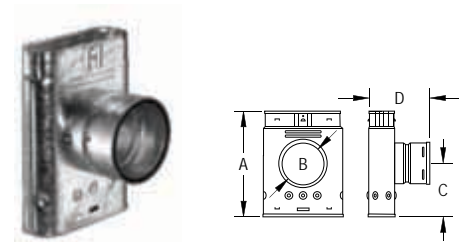
Oval Ceiling Plate Spacer



Use to center the oval vent where Oval Firestop Spacer is not required. (2 plates included.)

SIZE	STOCK #	ORDER #	A	B
4"	4GWCS	320	17 1/2"	3"

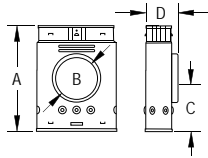
Oval Standard Tee



Use to attach round pipe to oval pipe. Use for a 90° offset or to combine connectors from two or more appliances into a common vent.

SIZE	STOCK #	ORDER #	A	B	C	D
4"	4GWT	312	10 1/4"	4"	5 1/4"	6"
5"	5GWT	512	11 3/4"	5"	6 1/4"	6 1/4"
6"	6GWT	612	12 1/8"	6"	6"	7"

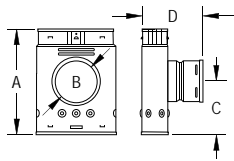
Oval Short Snout Tee



Use to attach round pipe to oval pipe. Use for a 90° offset or to combine connectors from two or more appliances into a common vent. Shorter snout allows installation in tight spaces.

SIZE	STOCK #	ORDER #	A	B	C	D
4"	4GWST	312ST	8 1/2"	4"	5"	3 1/2"

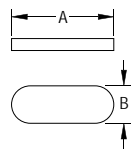
Oval In increaser Tee



Use to attach smaller round pipe to larger oval pipe. Use for a 90° offset or to combine connectors from two or more appliances into a common vent.

SIZE	STOCK #	ORDER #	A	B	C	D
4" x 3"	4GWTR3	331	10 1/8"	3"	5"	6 1/2"
5" x 3"	5GWTR3	512T3	11 7/8"	3"	6 1/4"	7 1/4"
5" x 4"	5GWTR4	512T4	11 7/8"	4"	6 1/4"	6 3/4"
6" x 4"	6GWTR4	612T4	12"	4"	5 3/4"	8 1/4"
6" x 5"	6GWTR5	612T5	12"	5"	5 3/8"	6 7/8"

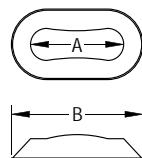
Oval Tee Cap



Use to close off bottom of Oval Tee. Fits on inner liner.

SIZE	STOCK #	ORDER #	A	B
4"	4GWTC	313	6 7/8"	2"
5"	5GWTC	513	10 3/8"	2 3/4"
6"	6GWTC	613	11 1/2"	2 3/4"

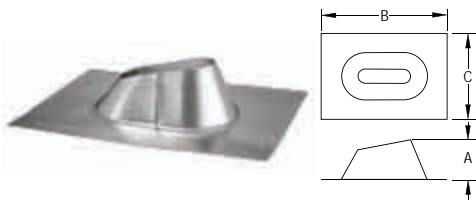
Oval Storm Collar



Use to maintain a weather tight resistant seal between the pipe and the flashing.

SIZE	STOCK #	ORDER #	A	B
4"	4GWSC	318	7 1/2"	10 1/4"
5"	5GWSC	518	10 3/4"	13 3/8"
6"	6GWSC	618	12"	15"

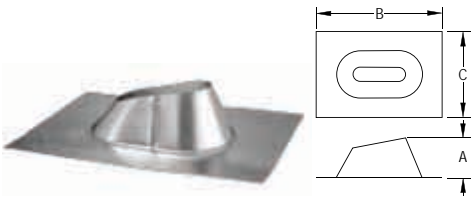
Oval Adjustable Roof Flashing



Use to weather proof the penetration of vent pipe through the roof. Storm Collar required. Select roof flashing based on pitch of roof. For pitches of 0/12 - 6/12. Made of galvalume.

SIZE	STOCK #	ORDER #	A	B	C
4"	4GWF	317	3 1/2"	18"	12 1/2"
5"	5GWF	517	7 3/4"	25 1/2"	17 1/2"
6"	6GWF	617	7 1/8"	25 1/2"	17 1/2"

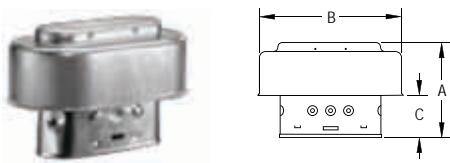
Oval DSA Roof Flashing



Use with metal or tile roofs. Available in Adjustable Roof Flashing style (0/12-6/12). Made of dead soft aluminum. Refer to Roof Flashing tables for dimensions.

SIZE	STOCK #	ORDER #	A	B	C
4"	4GWFDSA	317DS	3 3/4"	28 1/2"	23 1/2"
5"	5GWFDSA	517DS	3 1/2"	30 1/2"	27"
6"	6GWFDSA	617DS	7"	35"	27"

Oval Cap



Required where pipe terminates above the roof line. Use for vertical installations only.

SIZE	STOCK #	ORDER #	A	B	C
4"	4GWVT	316	6 1/8"	10"	2 3/4"
5"	5GWVT	516	7 1/2"	15 1/4"	3 3/4"
6"	6GWVT	616	7 1/2"	15 1/4"	4"