

Seat shall be Comfort[™] Seats

Model Number C8018

Heavy Duty Commercial Toilet Seat

Round Closed Front with Cover

Category

RESIDENTIAL

Features

- Injection molded durable polypropylene plastic with UV protection
- Molded in bumpers
- Matching adjustable hinge
- Corrosion proof POM nuts, bolts and washers
- Rubberized non-skid pads
- Stainless steel pintels for durability
- Top mount design
- Accepts steel (C200HPM) and 304 stainless (C200HPSS) hardware

Seat Color/Finish

Specify white, bone, or biscuit

Hinge Color/Finish

Specify white, bone, or biscuit

Product Specifications

Hinge Design: Color-matched hinge containing stainless steel pintels

Ring Thickness: 7/8"

Ring Thickness with Bumper: 1"

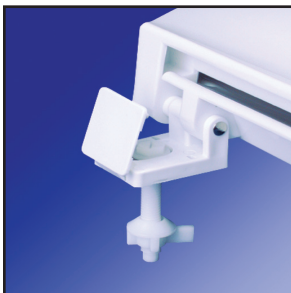
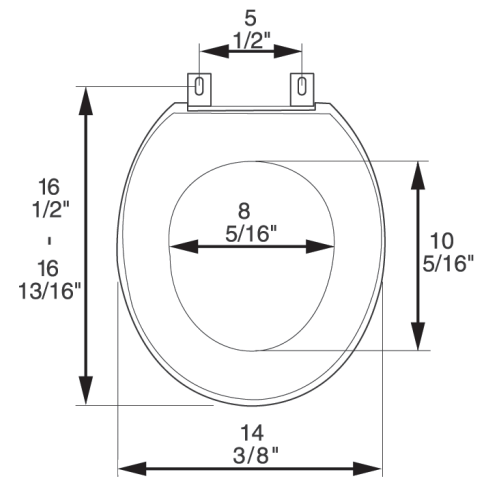
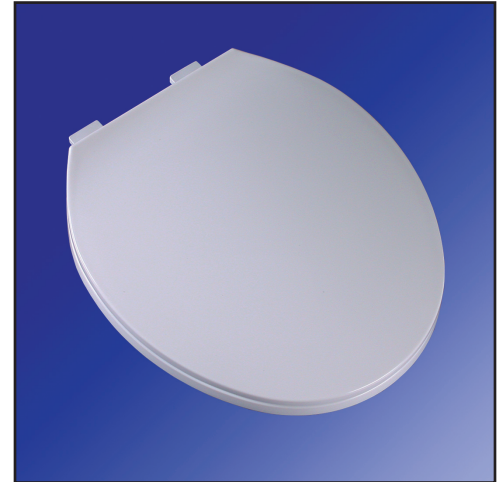
Height of Seat with Cover: 2 3/4"

Size: ANSI Standard Toilet - Meets Z124.5 Section 5.1.2

Additional Information

Stainless Steel (Model #C200-HPSS) or Metal (Model #C200-HPM) installation hardware for commercial/hospitality installations.

All seats feature UV protection.



Corrosion proof, self-aligning hardware



Factory-installed "living" hinge covers