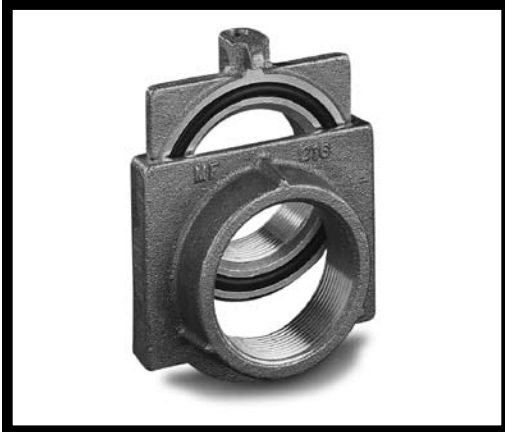


Little GIANT®

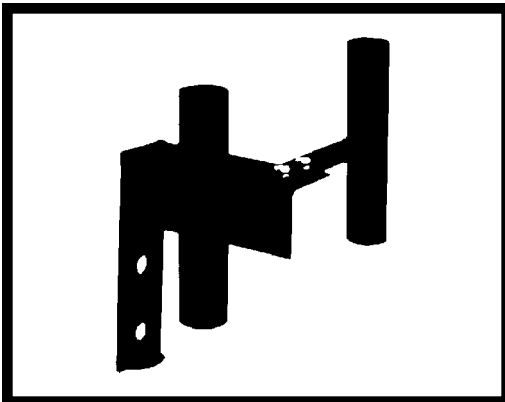
PUMP DISCONNECT & GUIDE RAIL SYSTEMS



The models GR-3/4, GR-3/4-114D and GR-1-1/4 are complete systems used for installations with a total depth of over 5' and the discharge pipe 18" or more below grade and particularly when the liquid level is above the discharge level. They can also be used for sewage installations as the discharge can pass between the two rail stand-off bars and out of the cover. 3/4" IPS (Iron Pipe Size) pipe rails should be used on the 1-1/4" and 2" discharge system and 1-1/4" IPS pipe rail on the 3" discharge system. A brass foot guide is supplied for use with steel pipe. Set screws are used for locking the steel pipe to the foot guide. 3/4" or 1-1/4" IPS pipe rails (which are supplied by the customer) can be galvanized, stainless steel (recommended) or PVC scd. 80 (optional). Stainless steel pull rods are used on the disconnect fittings (not offered by Little Giant Pump Company). 3/16" pull rods are purchased separately to the desired length for the 1-1/4" and 2" units. The GR-1-1/4 unit rod must be field fabricated (1/2"-13 UNC). The pump must be lifted by a separate chain. Guide rail brackets and steel stand-off brackets are included with each system to support the upper end of the guide rail pipes. The stationary half can be attached to the pit by drilling and bolting in place.



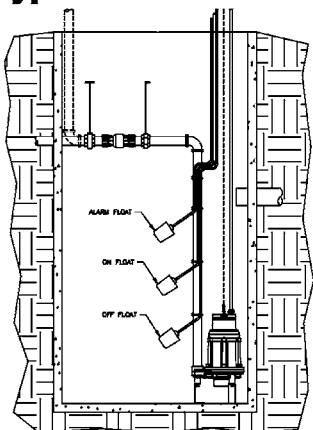
The PD-114 and PD-2 non-guide rail disconnect is for use where the discharge is no lower than 18" below grade or used for shallow systems where guide rails are not necessary. The point of discharge should be above the liquid level. Visibility of the discharge connection is desired because guide rails are not used. Stainless steel pull rods are used on the disconnect for removal. Rods are purchased separately (not offered by Little Giant Pump Company) to the desired length. A suitable chain or other means must be used for lifting the pump to avoid binding and strain on the pump discharge and disconnect system.



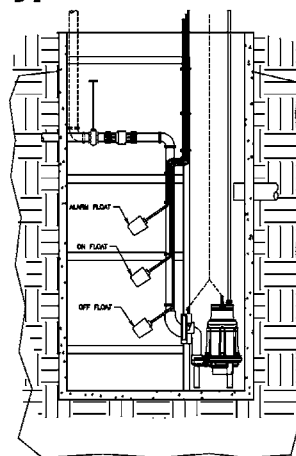
One intermediate guide rail bracket is required for every 10' of rail. The IGR-3/4 is the intermediate bracket for the 3/4" guide rail with 2" disconnect. The IGR-1-1/4 is the intermediate bracket for the 1-1/4" guide rail with 3" disconnect.

PUMP DISCONNECT & GUIDE RAIL SYSTEMS

**2" Disconnect
Typical Installation**



**Guide Rail System
Typical Installation**



All of the guide rail products can be used with any of the Little Giant® Effluent and Sewage pumps having a 1-1/4" and 2" or 3" discharge. Pump disconnects are used with pumps having a 1-1/4" or 2" discharge.

Construction

PD-114	Red brass hardware with Teflon® coated Buna-N® O-ring
PD-2	Red brass hardware with Teflon® coated Buna-N® O-ring
GR-3/4, GR-3/4-114D and GR-1-14	Guide Rail Foot—Red brass Guide Rail Disconnect—Red brass Bracket, Top Guide Rail—Vinyl coated steel Bracket, Stand-off—Vinyl coated steel Screws, Guide Rail Set—Stainless steel O-Ring—Teflon® coated Buna-N®
IGR-3/4 and IGR-1-14	Vinyl coated steel

Specifications

ITEM NO.	MODEL NO.	DESCRIPTION	WEIGHT (lbs.)
513300	GR-1-1/4	1-1/4" Guide Rail System with 3" NPT	24.5
513301	GR-3/4	3/4" Guide Rail System with 2" NPT	11.1
513302	PD-2	2" Pump Disconnect with 2" NPT	2.6
513303	IGR-3/4	Intermediate Guide Rail Bracket for use with #513301 - GR-3/4	5.0
513304	IGR-1-1/4	Intermediate Guide Rail Bracket for use with #513300 - GR-1-1/4	5.0
513305	GR-3/4-114D	3/4" Guide Rail System with 1-1/4" NPT	10.0
513306	PD-114	1-1/4" Pump Disconnect with 1-1/4" NPT	2.0

Little GIANT®

PO Box 12010 • Oklahoma City, OK 73157

Phone: 800.701.7894 • Fax: 800.701.8046

E-mail: customerservice@littlegiant.com