



SERVICE PARTS LIST

BULLETIN NO.
54-42-6175

SPECIFY CATALOG NO. AND SERIAL NO. WHEN ORDERING PARTS		REVISED BULLETIN	DATE
DRYWALL SCREWDRIVER			June 2000
CATALOG NO. 6742-20	STARTING SERIAL NO. 146A	WIRING INSTRUCTION 58-01-1800	

EXAMPLE:

00
0

 Component Parts (Small #) Are Included
 When Ordering The Assembly (Large #).

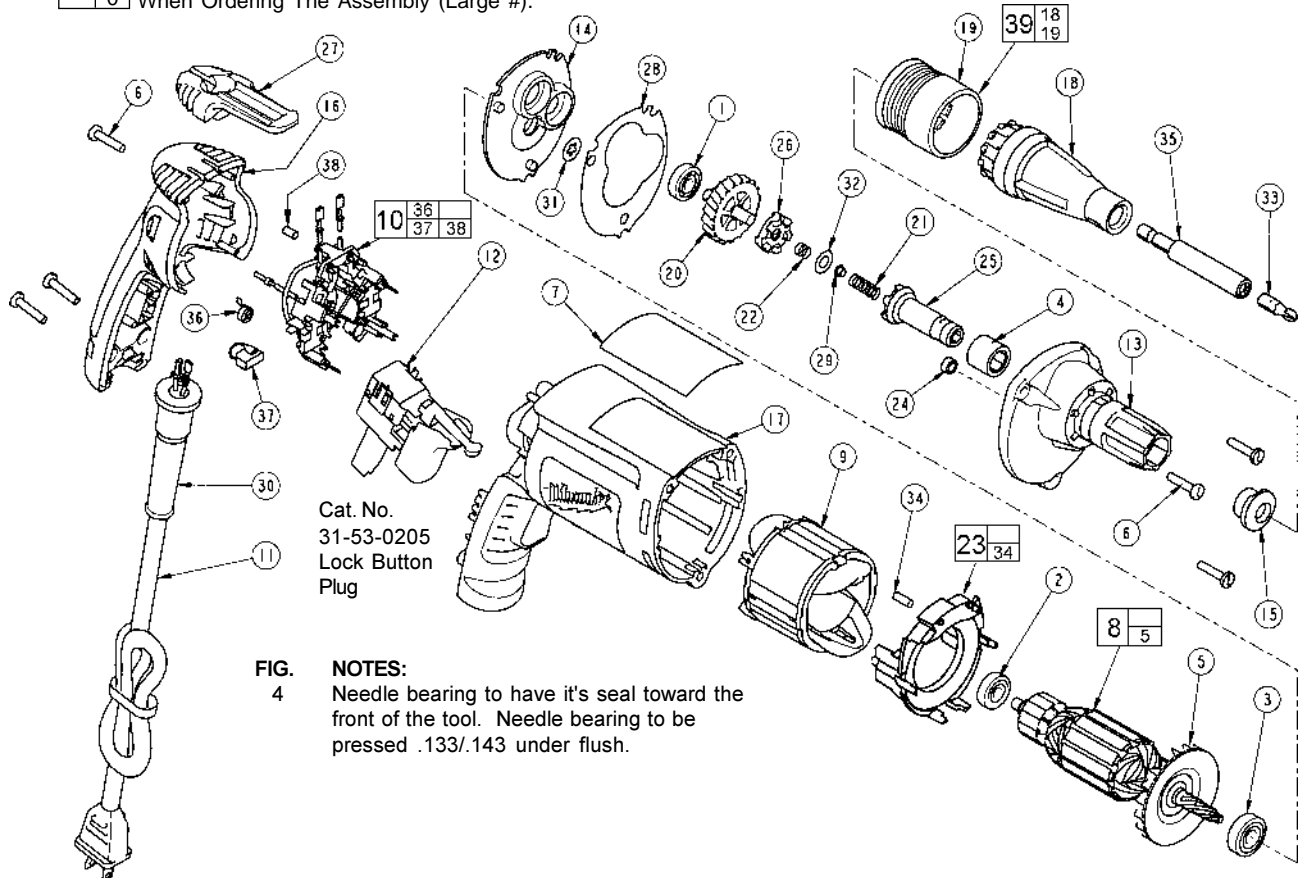


FIG. 4 NOTES:
 Needle bearing to have it's seal toward the front of the tool. Needle bearing to be pressed .133/.143 under flush.

FIG.	PART NO.	DESCRIPTION OF PART	NO. REQ.	FIG.	PART NO.	DESCRIPTION OF PART	NO. REQ.
1	02-04-0640	Ball Bearing	(1)	31	45-28-0195	Slinger - 5 Tooth	(1)
2	02-04-0645	Ball Bearing	(1)	32	45-88-0555	Clutch Thrust Washer	(1)
3	02-04-0852	Ball Bearing	(1)	33	48-32-1040	#2 Phillips Insert Bit	(1)
4	02-50-3245	Needle Bearing	(1)	34	45-30-0030	Slug	(2)
5	22-84-0840	Fan	(1)	35	48-32-3065	Magnetic Bit Holder	(1)
6	06-82-7275	7-18 x 3/4" Slotted Plastite Torx T-20	(6)	36	23-52-1610	Brush Spring	(2)
7	12-99-2665	Service Nameplate	(1)	37	22-18-1310	Brush Assembly	(2)
8	16-10-2200	Armature	(1)	38	45-30-0035	Slug	(1)
9	18-07-2200	Field	(1)	39	49-26-1036	Drywall Locator Assembly	(1)
10	22-18-1210	Brush Card Assembly	(1)				
11	22-64-6510	Cord Assembly	(1)	FIG. LUBRICATION:			
12	23-66-2585	Switch	(1)	20,22		Place .02 oz. (.5 grams) of type "Y" grease, No 49-08-5270, on bias spring. Place .02 oz. (.5 grams) total of grease in the clutch pockets of clutch gear.	
13	28-14-2375	Gearcase	(1)				
14	28-28-2315	Diaphragm	(1)	8,13		Place .27 oz. (7.6 grams) of type "Y" grease at the armature pinion location in the gearcase pocket and push down .20".	
15	30-37-0046	Drywall Nose Guide	(1)				
16	31-15-2010	Handle Halve	(1)	13,14		Apply a light film of type "Y" grease to needle and ball bearing pockets in diaphragm and gearcase prior to pressing bearings in.	
17	31-50-2010	Motor Housing	(1)				
18	31-51-0095	Drywall Locator	(1)	21,32		Place .02 oz. (.5 grams) of type "Y" grease to clutch thrust washer, thrust pin and separator spring during assembly.	
19	31-58-0515	Snap Sleeve	(1)				
20	32-10-0520	Clutch Gear Assembly	(1)				
21	40-50-0095	Separator Spring	(1)				
22	40-50-8515	Bias Spring	(1)				
23	42-14-0460	Baffle Assembly	(1)				
24	42-40-0045	Armature Bushing	(1)				
25	42-66-0715	Clutch Chuck Assembly	(1)				
26	42-70-0310	Drive Clutch	(1)				
27	42-70-5280	Belt Clip	(1)				
28	43-44-0985	Gasket	(1)				
29	44-60-0505	Thrust Pin	(1)				
30	44-76-0210	Cord Protector	(1)				

MILWAUKEE ELECTRIC TOOL CORPORATION
 13135 W. LISBON RD., BROOKFIELD, WI 53005