



ENGINEERING EXCELLENCE

Installation Guide

Single Handle Kitchen Pull-Out Faucet:

- 2LG220
- 2BL220

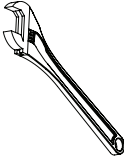



This product meets the following standards:

- ASME A112.18.1
- ANSI A117.1
- ANSI / NSF 61, SECTION 9
- CUPC / IAPMO LISTED / ADA COMPLIANT
- CONTAINS NO MORE THAN 0.25% WEIGHTED AVERAGE LEAD CONTENT



Thank you for purchasing this Pioneer quality product.

Tools Required

				
Adjustable Wrench	Teflon Tape	Rags	3/32" Allen Wrench	

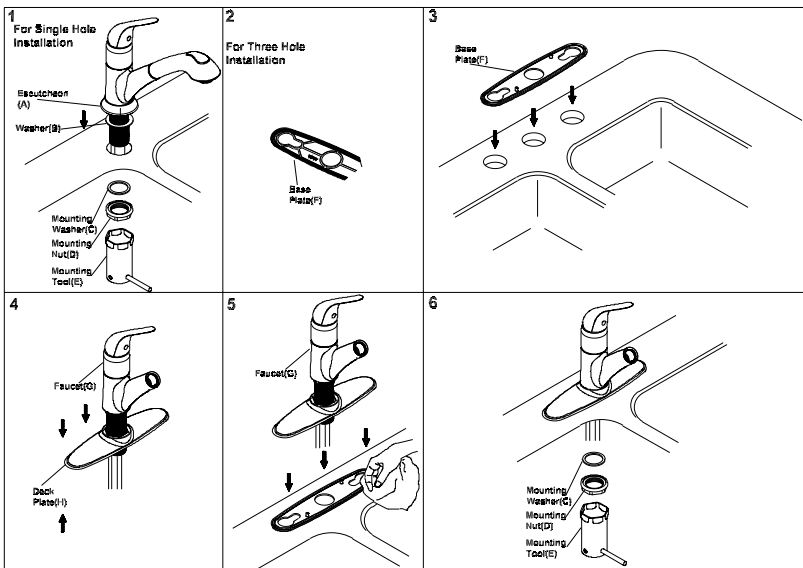
Prior to Installation

- Observe all local plumbing and building codes before you begin installation.
- Carefully shut off both hot and cold water supplies from under the sink.
- Plug the sink drain with a soft cloth to prevent intrusion of debris or the loss of any faucet parts.
- For replacement installations, carefully remove the existing faucet and clean the entire surface of the sink mounting holes.
- Pioneer reserves the right to make changes in the design of faucets without notice as specified in the pricebook.

Faucet Installation

- 1. For single hole installation** - Slide the escutcheon (A) for 1-hole installation to the faucet body. Slide the washer (B) through the hoses and place it under the escutcheon (A) for 1-hole Installation. Insert the faucet through mounting surface hole. Slide the mounting washer (C) from underneath and Install the mounting nut (D). Tighten it with mounting tool (E). Do not overtighten.
- 2. For three hole installation** - Apply plumbers putty or sealant to the bottom of the base plate (F).
3. Align the base plate (F) on the mounting surface and press into place.
4. Remove excess plumbers putty. Slide the deck plate (H) through the hoses underneath of the faucet(G).
5. Insert the faucet (G) through mounting surface hole.
6. Slide the mounting washer (C) from underneath and Install the mounting nut (D). Tighten it with mounting tool (E). Do not overtighten.

Faucet Installation

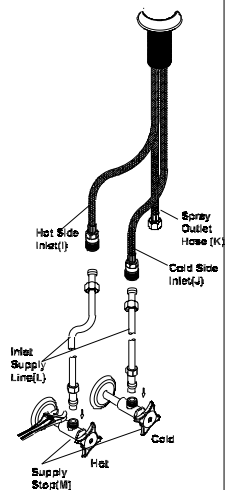


Faucet Installation

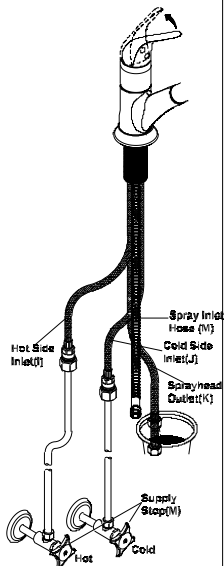
7. **For 1-hole or 3-hole installation** - Connect hot and cold side inlets (I & J) to inlet supply lines (L). Connect inlet supply lines (L) to the supply stops (M). Use thread sealant or Teflon tape for all the threaded joints if necessary.
8. Turn on the cold and hot water supplies. Turn on the handle and flush the hot and cold water for 1 minute. Turn off the cold and hot water supplies. Connect pullout spray head (O) to the spray inlet hose (N) insert the spray head inlet hose(N) through the hose support and lead all the spray head inlet hose (N) run into the hose support.
9. Attach the weight (N) 24" from the end of the spray inlet hose (N).
10. Connect the spray inlet hose (M) to spray outlet hose (K).
11. Turn on the water supply and check for any leaks.

Faucet Installation

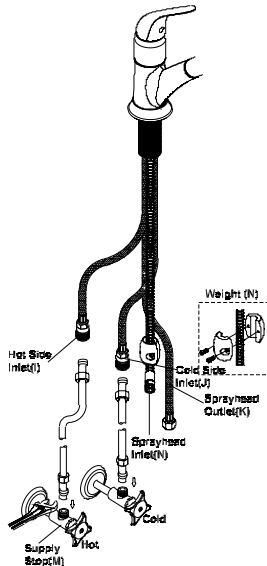
7



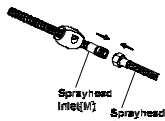
8



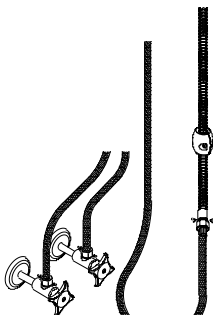
9



10



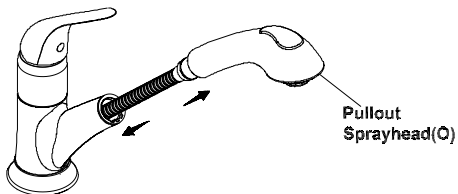
11



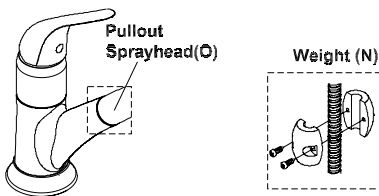
Faucet Installation

12. Extend and retract the pullout spray head (O) to confirm it does not barricade or catch. Reposition the weight if necessary. Confirm if the hoses are not crumpled or stuck together underneath.
13. If the pullout sprayhead (O) is not placed properly reposition the weight (N).

12



13

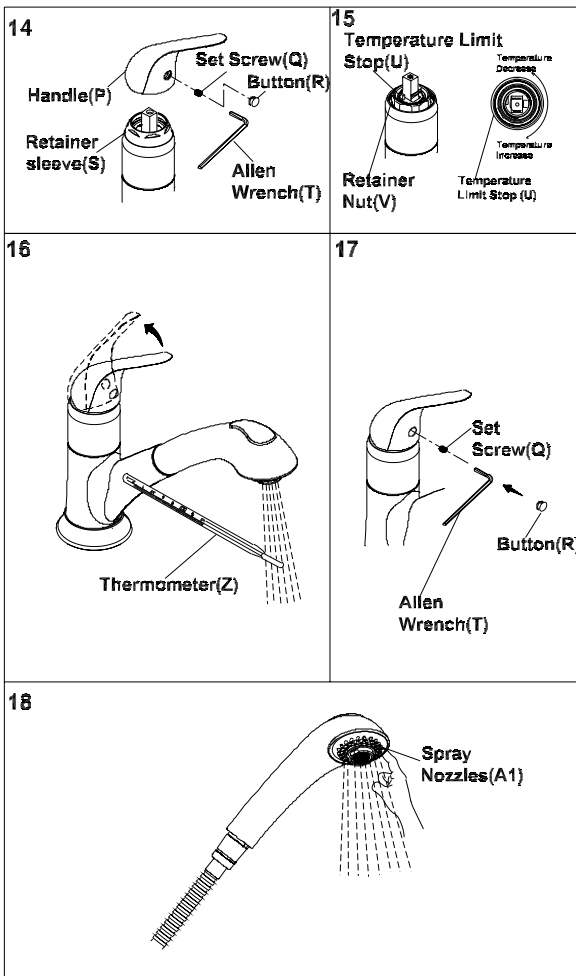


To Set or Adjust Temperature Limit Stop

Caution: Ceramic cartridge is preset at the factory at maximum temperature. Adjust as necessary. Please see the instructions below:

15. Turn off water and relieve the pressure. Remove handle (P) by removing button (R) and loosening set screw (Q) lift off the handle (P). Unscrew retainer sleeve (S) and retaining nut (V) counterclockwise.
16. Use two fingers to raise the red temperature limit stop (U). Turn temperature limit stop (U) counterclockwise to decrease the temperature setting and clockwise to increase the temperature. Replace the red adjustment ring (U).
- 17-18. Reassemble and test the water with thermometer (Z) until desired safe temperature is reached. (Note: Ensure proper alignment of cartridge with notch in valve body.)
19. If the spray flow is reduced due to dislodge debris and other deposits, firmly rub your finger back & forth against the spray nozzles(A1) with water flowing through the spray nozzles(A1).

To Set or Adjust Temperature Limit Stop



For more care information or trouble shooting inquiries about your Pioneer Product, please see the contact information on the back page.



ENGINEERING EXCELLENCE

3325 S. Garfield Ave. | Commerce, CA 90040
Telephone: (800) 338-9468 | (323) 888-8873 | Fax: (323) 888-9515
Hours: M - F, 7:30am to 5:00pm PST
www.pioneerind.com