



# ENGINEERING EXCELLENCE

Del Mar Series #3DM100

PARTS BREAKDOWN SHEET

### DESCRIPTION

- Two Handle Lavatory Faucet
- Metal Lever Handles
- 6-1/16" Reach, 2-1/8" From Deck to Aerator
- Ceramic Disc Cartridges
- 3-Hole 4" Installation
- Brass Pop-Up Drain Assembly

### FINISHES

- PC PVD Polished Chrome
- BN PVD Brushed Nickel
- PN PVD Polished Nickel
- ORB Oil Rubbed Bronze
- TB PVD Tuscany Bronze



### STANDARDS APPLICABLE

- ASME A112.18.1
- ANSI A117.1
- ANSI / NSF 61, SECTION 9
- CUPC / IAPMO LISTED / ADA COMPLIANT
- CONTAINS NO MORE THAN 0.25% WEIGHTED AVERAGE LEAD CONTENT

### FLOW

- Aerator Limited to 1.5 GPM



#3DM100 SHOWN \* ADA 

Model #: \_\_\_\_\_

Specific Features: \_\_\_\_\_

Project Name: \_\_\_\_\_

Submitted For: \_\_\_\_\_

Model	Description	Finishes	
#3DM100	Two Handle Lavatory Faucet	<input type="checkbox"/> PC	<input type="checkbox"/> Other__



ENGINEERING EXCELLENCE

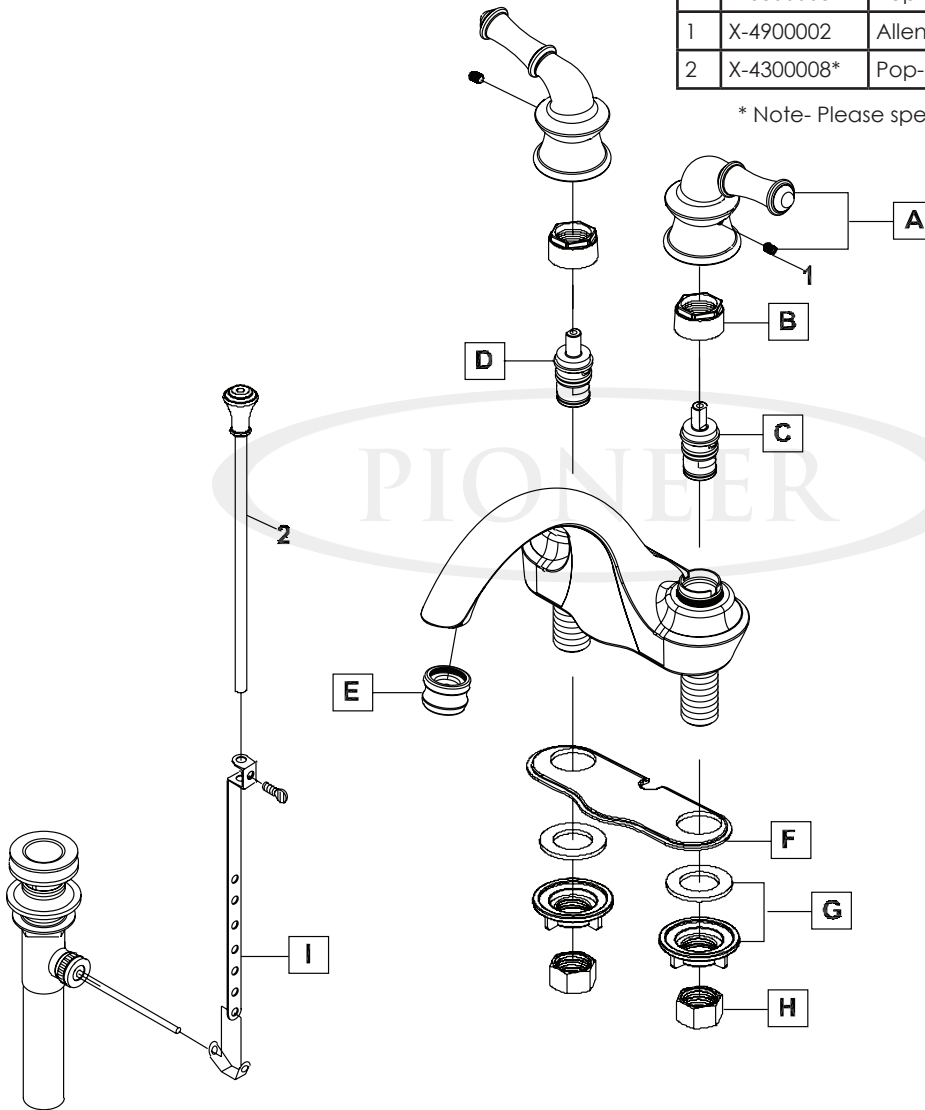
Pioneer: 1-800-338-9468  
 Commerce, CA 90040  
 www.pioneerind.com  
 Pioneer Industries, Inc. © 2013

DMPB3DM100/REV. 12 2012

Page 1 of 2

	ITEM#	DESCRIPTION
A	X-1900005*	Del Mar Handle
B	X-4900007	Bonnet Nut
C	X-3900002C	Ceramic Stem - Cold
D	X-3900002H	Ceramic Stem - Hot
E	X-4300060*	1.5 GPM Aerator
F	X-4300006	Base Plate
G	X-4900008	Mounting Kit
H	X-4900004	Supply Nut
I	X-6300003*	Pop-Up (For 3DM100)
1	X-4900002	Allen Screw
2	X-4300008*	Pop-Up Lift Rod (For 3DM100)

\* Note- Please specify finish/color code while ordering.



Product Diagram

