



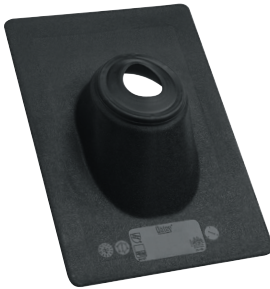
#12936 shown



### Aluminum No-Calk® Roof Flashings

- Rustproof stamped aluminum base allows for easy shaping of flashing.
- Rated 180°F continuous heat and approved for Type B installations.
- Metal base for pitch from 0-40° or up to 10/12 roof.
- Self-sealing collar slides over pipe and requires no caulking.
- Do not use petroleum based products or paint on flashing collar. Not for hot-mopped or built-up roofs.

| Product No.                    | Size         | Description                  | Ctn. Qty. |
|--------------------------------|--------------|------------------------------|-----------|
| <b>STANDARD BASE FLASHING</b>  |              |                              |           |
| 11832                          | .5" – 1"     | Aluminum 9" x 12.5" base     | 12        |
| 12920                          | 1.25" – 1.5" | Aluminum 9" x 12.5" base     | 12        |
| 12923                          | 1.25" – 1.5" | Aluminum 9" x 12.5" base     | 6         |
| 12933                          | 2"           | Aluminum 9" x 12.5" base     | 12        |
| 12936                          | 2"           | Aluminum 9" x 12.5" base     | 6         |
| 12946                          | 3"           | Aluminum 11" x 14.5" base    | 12        |
| 12949                          | 3"           | Aluminum 11" x 14.5" base    | 6         |
| 12958                          | 4"           | Aluminum 12" x 15" base      | 6         |
| 12959                          | 4"           | Aluminum 12" x 15" base      | 12        |
| <b>18" X 18" BASE FLASHING</b> |              |                              |           |
| 11833                          | .5" – 1"     | Aluminum 18" x 18" base      | 12        |
| 12836                          | 1.25" – 1.5" | Soft Aluminum 18" x 18" base | 12        |
| 12849                          | 2"           | Soft Aluminum 18" x 18" base | 12        |
| 12852                          | 3"           | Soft Aluminum 18" x 18" base | 12        |
| 12865                          | 4"           | Soft Aluminum 18" x 18" base | 12        |



#11898 shown



U.S. Patent No.  
5,390,451

### Thermoplastic No-Calk® Roof Flashings

- Non-fading, non-cracking, rigid black thermoplastic base.
- Self-sealing collar slides over pipe and requires no caulking.
- Do not use petroleum based products or paint on flashing collar or plastic base. Not for hot-mopped or built-up roofs.
- Plastic base for pitch from 0-45° or up to 12/12 roof.
- Rated 180°F continuous heat and approved for Type B installations.

| Product No.                    | Size         | Description                     | Ctn. Qty. |
|--------------------------------|--------------|---------------------------------|-----------|
| <b>STANDARD BASE FLASHING</b>  |              |                                 |           |
| 11908                          | 1.25" – 1.5" | Thermoplastic 9.25" x 13" base  | 12        |
| 11898                          | 1.25" – 1.5" | Thermoplastic 9.25" x 13" base  | 6         |
| 11909                          | 2"           | Thermoplastic 9.25" x 13" base  | 12        |
| 11899                          | 2"           | Thermoplastic 9.25" x 13" base  | 6         |
| 11910                          | 3"           | Thermoplastic 11" x 15" base    | 12        |
| 11890                          | 3"           | Thermoplastic 11" x 15" base    | 6         |
| 11911                          | 4"           | Thermoplastic 12" x 16" base    | 12        |
| 11891                          | 4"           | Thermoplastic 12" x 16" base    | 6         |
| 11884                          | 1.25" – 1.5" | Thermoplastic 12" x 18" base    | 12        |
| <b>SW/TEXAS BASE FLASHING</b>  |              |                                 |           |
| 11917                          | 1.25" – 1.5" | Thermoplastic SW 11" x 15" base | 12        |
| 11918                          | 2"           | Thermoplastic SW 11" x 15" base | 12        |
| <b>18" X 18" BASE FLASHING</b> |              |                                 |           |
| 11887                          | 1.25" – 1.5" | Thermoplastic 18" x 18" base    | 12        |
| 11888                          | 2"           | Thermoplastic 18" x 18" base    | 12        |
| 11889                          | 3"           | Thermoplastic 18" x 18" base    | 12        |