

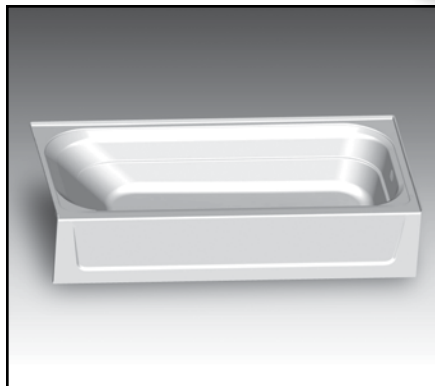


MUSTEE

Preferred by the "Pros"

T6030R TOPAZ™ Fiberglass Bathtubs — Premier Right Hand Drain

SEE PAGES 2-4 FOR VARISTONE,™ TOPAZ™ & DURAWALL®
BATHTUB WALLS AND ACCESSORIES ▶



Design features:

- Precision molded using Mustee's premium VARISTONE® fiberglass
- Fits standard 30" x 60" alcove
- Apron supported by twin molded fiberglass brackets for extra stability
- A network of bottom and side structural support
- One-piece molded, with matched metal molds for high strength and integral rigidity
- 40° lumbar slope for relaxed reclining while soaking
- 8-1/2" x 14-1/4" drain offset
- Fits a wide range of finished wall options...
 - TOPAZ™ and DURAWALL® premium fiberglass bathtub walls
 - DURAWALL® deluxe thermoplastic bathtub walls
 - Tile walls
 - Solid surface walls
- Easy to clean, colorfast white semi-gloss finish

Code Accepted

TOPAZ™ Fiberglass Bathtubs meet or exceed performance requirements as listed:

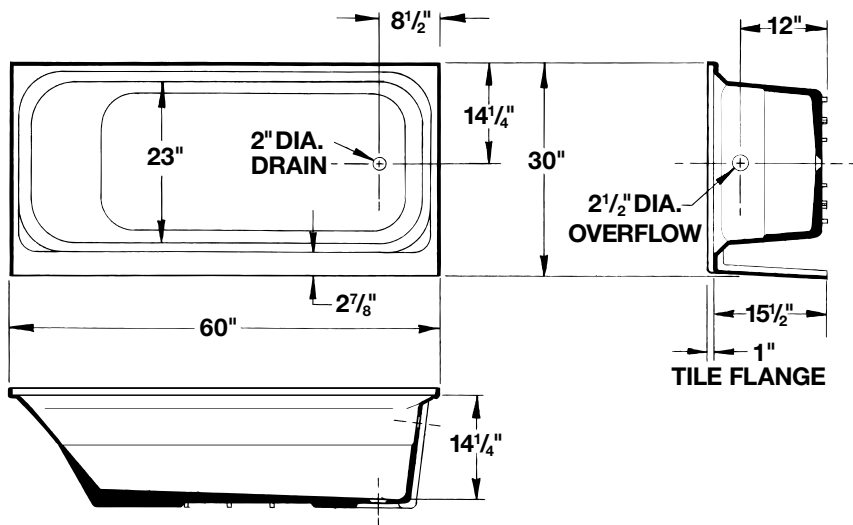
- International Association of Plumbing and Mechanical Officials (IAPMO)® Listed
- American National Standards Institute (ANSI) - Specification ANSI Z 124-2011



Specifications

| Model No. | Color | H x W x L | Drain Position | UPC |
|-----------|---------|---------------------|----------------|-----------------|
| T6030R | White | 16-1/2" x 30" x 60" | RH | 6 71031 00413 0 |
| T6030RBN | Bone | 16-1/2" x 30" x 60" | RH | 6 71031 00414 7 |
| T6030RBT | Biscuit | 16-1/2" x 30" x 60" | RH | 6 71031 00432 1 |

Inside depth: 14-1/4"



General: Furnish and install as shown on plans, TOPAZ® bathtub as manufactured by E.L. Mustee & Sons, Inc. Shall be a fiberglass 30" x 60: right hand or left hand Model _____. Construction shall be molded, reinforced fiberglass using matched metal molds under extreme heat and pressure. Shall meet ANSI Specification Z 124-2011. Color: _____ (White, Bone, Biscuit) Weight: 74 lbs. Install in compliance with local codes.



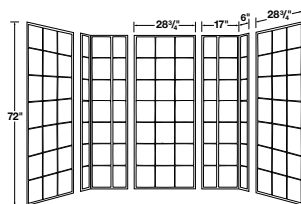
MUSTEE

E.L. Mustee & Sons, Inc. • 5431 West 164th Street • Brook Park, OH 44142 • Phone: 216.267.3100 • Fax: 216.267.9997
E-mail: info@mustee.com • Web: www.mustee.com • Proudly made in the USA

Notice: Our continuous commitment to product improvement may result in changes to product specifications without notice.
Patents pending. Made and Printed in U.S.A.



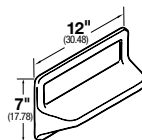
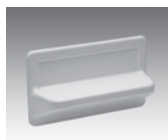
572T VARISTONE™



Up to 60" Wide by 34" Deep

| Model | Color |
|---------|-------|
| 572TWHT | White |

572.300 VARISTONE™ — SHELVES (OPTIONAL)

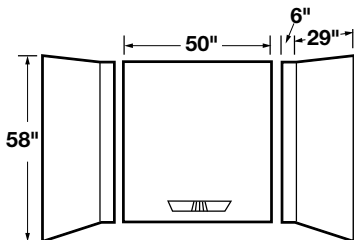


| Model | Color |
|-----------|---------|
| 572.300 | White |
| 572.300BT | Biscuit |

Order desired number of shelves separately. Sturdy, adhesive mounted shelf is easy to install. Carton is 12" x 7 1/4" x 4" and weighs 2.5 lbs.



350 DURAWALL®

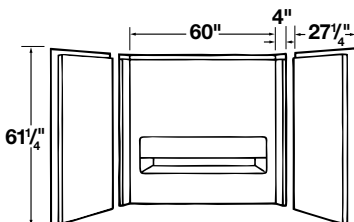


| Model | Color |
|--------|---------|
| 350WHT | White |
| 350BN | Bone |
| 350BT | Biscuit |

Fits 30" x 60" Bathtub
Caulking and adhesive provided



660 TOPAZ™ PREMIUM FIBERGLASS BATHTUB WALLS

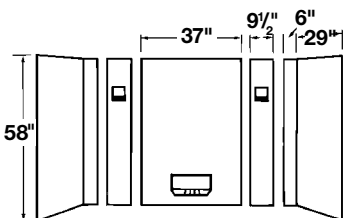


| | |
|--------|---------|
| 660WHT | White |
| 660BN | Bone |
| 660BT | Biscuit |

Fits 30" x 60" Bathtub



500 DURAWALL®



| | |
|--------|-------|
| 500WHT | White |
| 500BN | Bone |

Fits 30" x 60" Bathtub





MUSTEE

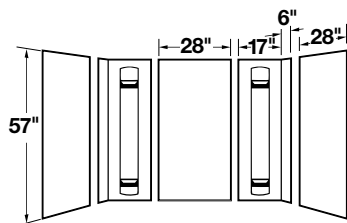
Preferred by the "Pros"

Deluxe Thermoplastic Walls Adhesive Mount

MORE ON PAGE 4 ▶



557 DURAWALL®

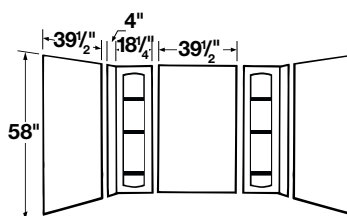


| | |
|--------|-------|
| 557WHT | White |
| 557BN | Bone |

Fits 30" x 60" and 32" x 60" Bathtubs



56 DURAWALL®

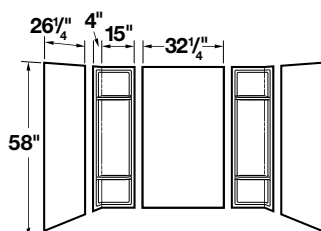


| Model | Color |
|-------|-------|
| 56WHT | White |
| 56BN | Bone |

Fit 42" x 72" Bathtub



53 DURAWALL®

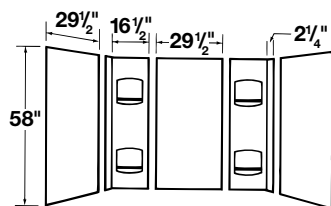


| | |
|-------|-------|
| 53WHT | White |
| 53BN | Bone |

Fit 30" x 60" Bathtub



952 DURAWALL®

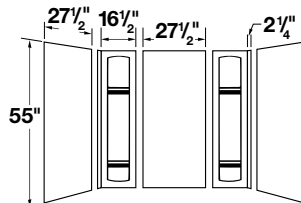


| | |
|--------|-------|
| 952WHT | White |
|--------|-------|

Fit 30" x 60" Bathtub



950 DURAWALL®



| | |
|--------|-------|
| 950WHT | White |
|--------|-------|

Fit 30" x 60" Bathtub



MUSTEE

E.L. Mustee & Sons, Inc. • 5431 West 164th Street • Brook Park, OH 44142 • Phone: 216.267.3100 • Fax: 216.267.9997
E-mail: info@mustee.com • Web: www.mustee.com • Proudly made in the USA

Notice: Our continuous commitment to product improvement may result in changes to product specifications without notice.
Patents pending. Made and Printed in U.S.A.



▶ **GapSeal-Pro™ — For all shower floors and bathtubs**



| Model No. | Description | UPC |
|------------------|---------------------|-----------------|
| 60.320A | 132" long x 2" tall | 6 71031 00496 3 |

The flexible PVC GapSeal-Pro™ features a strong adhesive strip that allows it to be easily positioned to "extend" the tile flange and effectively seal the gap between drywall or like-surfaces on shower floors or bathtubs. Patent pending.

