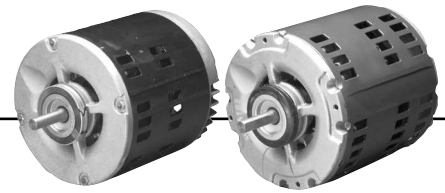


Split Phase Evaporative Cooler

6.3" Diameter, Open Dripproof

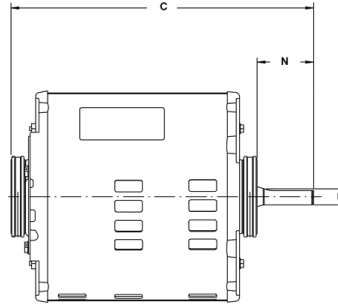


APPLICATIONS:

To meet manufacturer's requirements for evaporative cooling units.

FEATURES:

- Ball Bearings
- Class F Insulation
- CW Rotation Shaft End
- Zinc-Phosphate Stator Studs and Nuts
- Corrosion Resistant Rotor Core and Actuator Assembly
- Industry Standard Hub To Hub Dimension
- Automatic Reset Thermal Overload Protector
- **Discount Symbol: DS-3HAC**



Single Speed

HP	RPM	Voltage	Catalog Number
1/3	1725	115	6764
1/2	1725	115	7095
	1725	115	6768
	1725	230	6766
3/4	1725	115	7096
	1725	115	6769
	1725	230	6771

Bearings	NEMA [†] Frame	Amps	Shaft N	Shaft U	Protector	Total C	SF	Ship Wt. (lbs)	Notes
Ball	56Z	5.6	1.6	0.500	Auto	9.4	1.00	14	
Ball	56Y	8.4	1.6	0.500	Auto	9.4	1.00	17	89
Ball	56Z	8.2	1.6	0.500	Auto	9.4	1.00	15	
Ball	56Y	4.8	1.6	0.500	Auto	9.4	1.00	19	
Ball	56Y	11.7	1.6	0.500	Auto	9.4	1.00	19	89
Ball	56Z	10.5	1.6	0.500	Auto	9.4	1.00	18	
Ball	56Y	5.4	1.6	0.500	Auto	9.4	1.00	20	

Two Speed

HP	RPM	Voltage	Catalog Number
1/3	1725/1140	115	7097
	1725/1140	115	6767
1/2	1725/1140	115	6765
	1725/1140	115	7098
	1725/1140	230	6795
3/4	1725/1140	115	7099
	1725/1140	230	6796
1	1725/1140	115	2574
	1725/1140	230	2423

Bearings	NEMA [†] Frame	Amps	Shaft N	Shaft U	Protector	Total C	SF	Ship Wt. (lbs)	Notes
Ball	56Z	6.6	1.6	0.500	Auto	9.4	1.00	17	89
Ball	56Z	5.5/3.9	1.6	0.500	Auto	9.4	1.00	17	
Ball	56YZ	7.5/4.0	1.6	0.500	Auto	9.4	1.00	16	
Ball	56Z	8.2	1.6	0.500	Auto	9.4	1.00	19	89
Ball	56Z	4.5	1.6	0.500	Auto	9.4	1.00	19	
Ball	56Z	10.9	1.6	0.500	Auto	9.4	1.00	19	89
Ball	56Y	5.5	1.6	0.500	Auto	9.4	1.00	19	
Ball	56	12.4/6.1	1.9	0.625	Auto	11.8	1.00	35	35,60,89,H39
Ball	56	7.0/3.7	1.9	0.625	Auto	11.8	1.00	34	35,60,89,H39

NOTE: For Hub Mounting, Order Kit Number 51 and 52. See Pages 188-189.

- Note 35 Includes Resilient Base
- Note 60 Capacitor Start
- Note 89 All Copper Wound
- Note H39 Reversible Rotation By Easy Reconnection

† All marks shown within this document are properties of their respective owners.



BRAKEMOTORS
GENERAL PURPOSE SINGLE PHASE
HVAC
WASHDOWN
AGRICULTURE
COMMERCIAL PUMP MOTORS
CLOSE COUPLED PUMP MOTORS
FIRE PUMP MOTORS
POOL & SPA MOTORS
RESIDENTIAL WATER PUMP
ELEVATOR GATE & DOOR
VARIABLE SPEED MOTORS AND DRIVES