

Instructions for Models:

VS-113010
VS-113011
VS-113014
VS-112007

What You Need To Know:

Tools:

Required:
Adjustable
Wrench



Teflon
Tape



Important Notes:

Be sure to read instructions thoroughly before beginning installation. Do not overtighten any connections or damage may occur.

Safety Tips:

Cover your drain to prevent loss of parts.

Maintenance:

Keep your Speakman product looking new by cleaning it periodically with a soft cloth. Avoid abrasive cleaners, steel wool, and harsh chemicals as these will dull the finish and void your warranty.

Need Help?

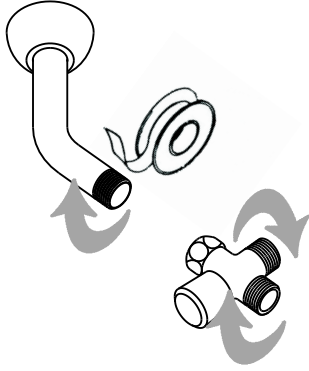
For additional assistance or service call:

SPEAKMAN Company
400 Anchor Mill Road
New Castle, DE 19720

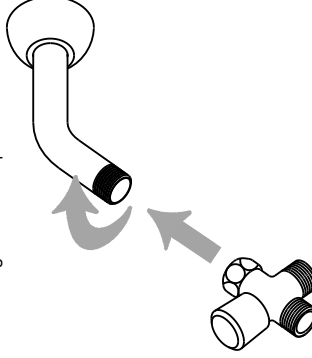
PHONE: 800-537-2107
EMAIL: customerservice@speakmancompany.com
WEB: www.speakmancompany.com

VS-11XXXX-IOM-R1

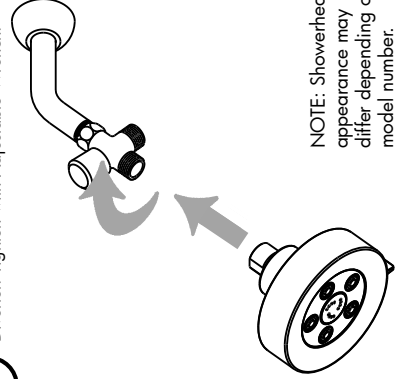
1 Apply Teflon Tape in a clockwise direction to all threaded connections.



2 NOTE: Inspect Diverter to be sure Sealing Washer is in place within Coupling Nut. Thread Coupling Nut of Diverter onto Shower Arm. Tighten with Adjustable Wrench.

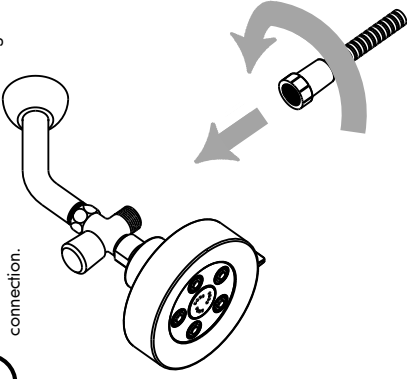


3 Thread fixed Showerhead onto front outlet of Diverter. Tighten with Adjustable Wrench.

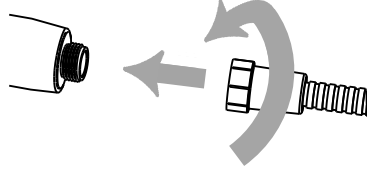


NOTE: Showerhead appearance may differ depending on model number.

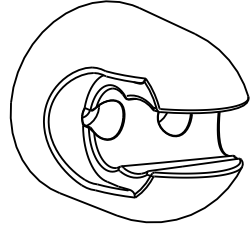
4 Thread Hose end marked "VACUUM BREAKER" onto bottom outlet of Diverter. Hand tighten connection.



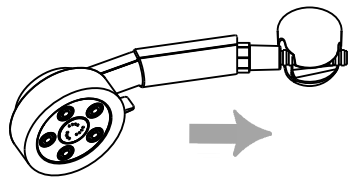
5 Thread Hose end marked "HAND SHOWER" onto base of Handheld Shower. Hand tighten connection.



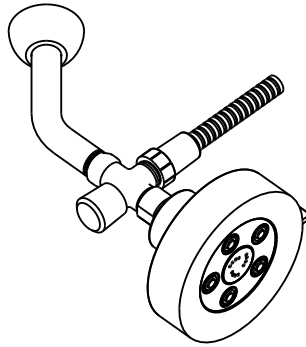
6 Install Wall Mount in desired position using Screws and Anchors provided. Double-Sided Tape can also be used. Tape not provided but available at most hardware stores. Refer to rough-in drawing for critical mounting dimensions.



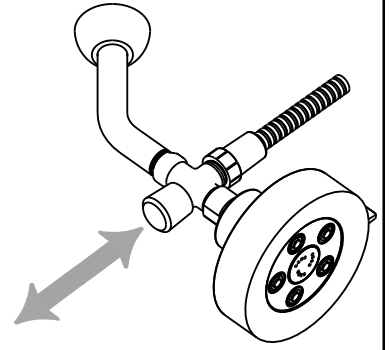
7 Insert Hand Shower into Wall Mount. Two positions possible (Vertical and Angled).



8 Turn on water supply and check all threaded connections for leaks. If leaks occur tighten connection with an adjustable wrench or by hand.

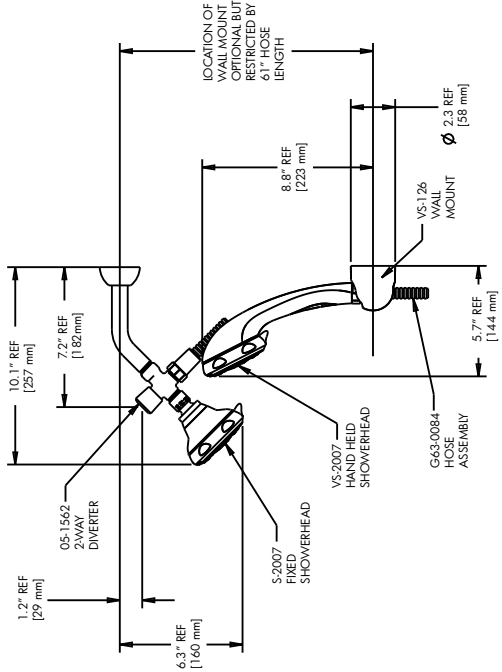


9 Check Diverter for proper operation by pulling up on knob to activate Hand Shower. Then press down on knob to activate Fixed Showerhead.

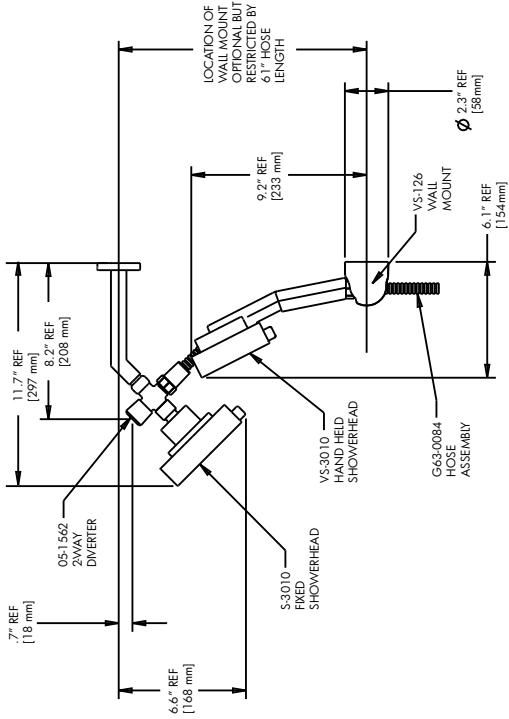


Rough-In

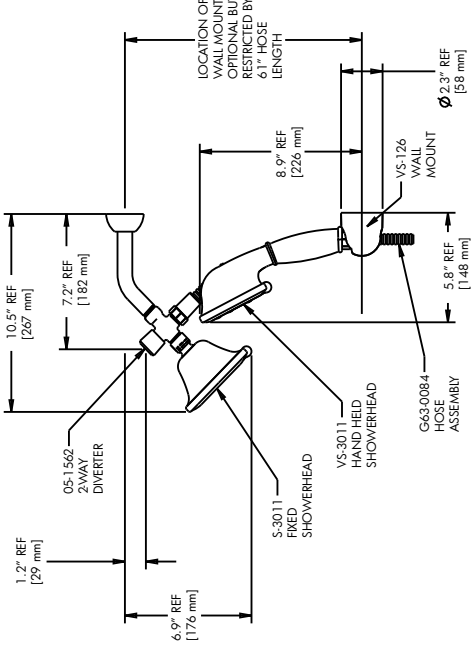
VS-112007-RI



VS-113010-RI



VS-113011-RI



VS-113014-RI

