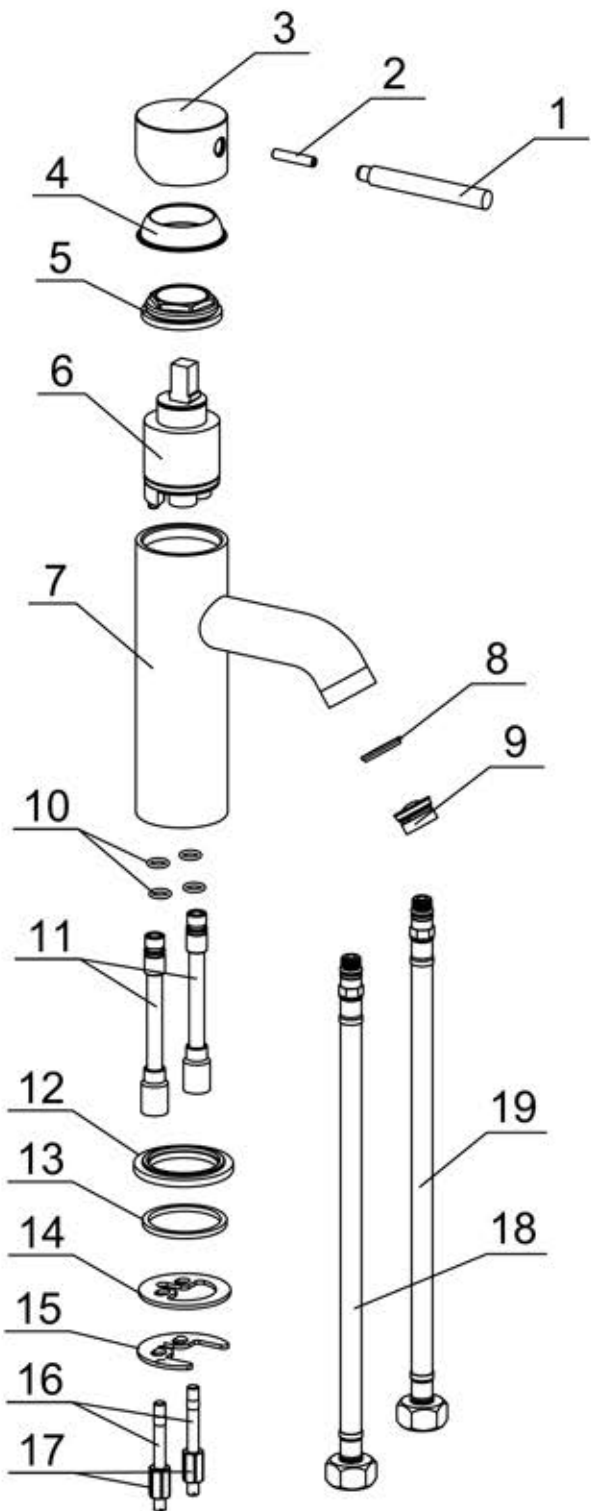


AB1433



19	9/16 Steel wire pipe(450)(NSF)(Blue)PEX	Subassembly	1	50042048426
18	9/16 Steel wire pipe(450)(NSF)(Red)PEX	Subassembly	1	50042048421
17	1360 nut (M6)	H59	2	50020002601
16	1360 fixing bolt	Subassembly	2	50020002201
15	1176 two-hole gasket	Q235	1	50020013201
14	1360 two-hole washer	Rubber	1	70020002230
13	1141 flat washer	NBR	1	70020021530
12	1141 base	H59	1	50010007001
11	4031 inlet pipes	Subassembly	2	50040017801
10	7.65*1.78 O-Ring(NSF)	NBR	4	70010027530
9	M24*1 insert	Subassembly	1	50050022326
8	M24*1 washer (NSF)	NBR	1	50050010300
7	100101076-1433 main body	Subassembly	1	10010107601
6	40H cartridge	Subassembly	1	20060002800
5	1050 cartridge nut	H59	1	40060000352
4	1341 decorative cover	ABS	1	50010067301
3	2131 handle seat	Zinc alloy	1	40040029101
2	M5*25 fixing screw	Stainless steel	1	50060000200
1	1433 handle lever	ABS	1	50010008600
No.	Description	Material	Qty.	Part No.