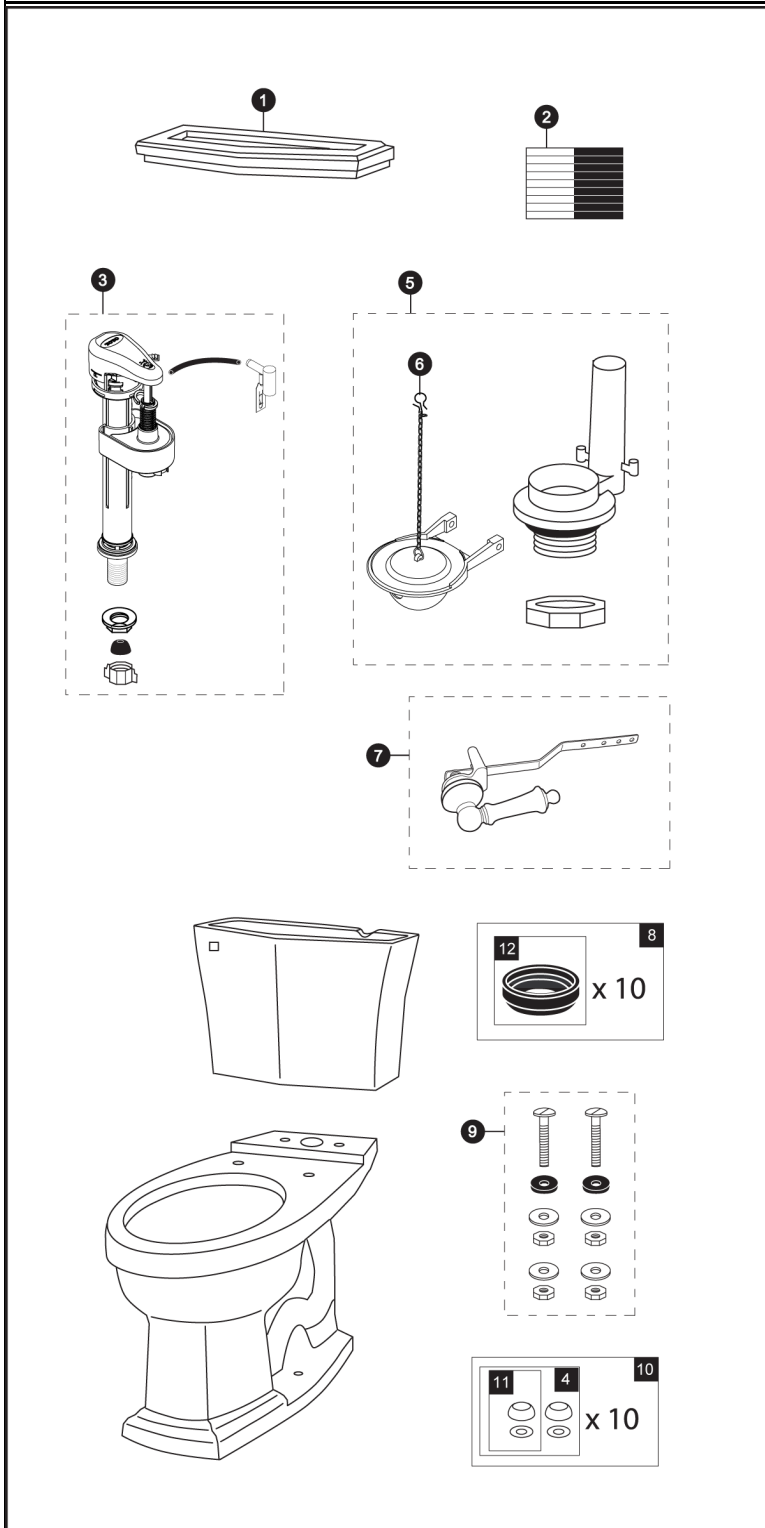


CST784SF

CST784SF
ST784S
S784SF

Clayton®

1.6 Gpf Toilet, Elongated, G-Max®, 12" Rough-In, Universal Height



| Items | Parts | Description |
|-------|-------------|--|
| 1 | TCU784CR#01 | Tank Lid w/ Velcro Tape - Cotton |
| | TCU784CR#03 | Tank Lid w/ Velcro Tape - Bone |
| | TCU784CR#11 | Tank Lid w/ Velcro Tape - Colonial White |
| | TCU784CR#12 | Tank Lid w/ Velcro Tape - Sedona Beige |
| | TCU784CR#51 | Tank Lid w/ Velcro Tape - Ebony |
| 2 | THU107 | Velcro Tape |
| 3 | TSU53A | Fill Valve |
| 4 | THU044S#01 | Bolt Cap Set - Cotton (2 pieces) |
| | THU044S#03 | Bolt Cap Set - Bone (2 pieces) |
| | THU044S#11 | Bolt Cap Set - Colonial White (2 pieces) |
| | THU044S#12 | Bolt Cap Set - Sedona Beige (2 pieces) |
| 5 | THU129P-4A | Flush Valve |
| 6 | THU331S | Flapper w/ Chain |
| 7 | THU148#01 | Trip Lever - Cotton |
| | THU148#03 | Trip Lever - Bone |
| | THU148#11 | Trip Lever - Colonial White |
| | THU148#12 | Trip Lever - Sedona Beige |
| | THU148#51 | Trip Lever - Ebony |
| | THU148#CP | Trip Lever - Chrome Plated |
| | THU148#BN | Trip Lever - Brushed Nickel |
| | THU148#RB | Trip Lever - Oil Rubbed Bronze |
| | THU148#SB | Trip Lever - Satin Brass |
| 8 | THU131 | Tank to Bowl Gaskets (10 pieces) |
| 9 | TSU01D | Tank Mounting Kit |
| 10 | THU098#01 | Bolt Cap Sets - Cotton (20 pieces) |
| | THU098#03 | Bolt Cap Sets - Bone (20 pieces) |
| | THU098#11 | Bolt Cap Sets - Colonial White (20 pieces) |
| | THU098#12 | Bolt Cap Sets - Sedona Beige (20 pieces) |
| | THU098#51 | Bolt Cap Sets - Ebony (20 pieces) |
| 11 | THU044#01 | Bolt Cap - Cotton |
| | THU044#03 | Bolt Cap - Bone |
| | THU044#11 | Bolt Cap - Colonial White |
| | THU044#12 | Bolt Cap - Sedona Beige |
| | THU044#51 | Bolt Cap - Ebony |
| 12 | 9BU024E | Tank to Bowl Gasket |

Note:

Product Number Explanations

Two-Piece Toilet

(CST) Gravity Type Toilet
(784) Model
(S) G-Max®
(F) Universal Height

Tank

(ST) Tank
(784) Model
(S) G-Max®

Bowl

(C) Bowl
(784) Model
(S) G-Max®
(F) Universal Height

Actual Product may vary slightly from illustration.