



PRODUCT INFORMATION

APPLICATION

Spears® Copper Tube Size (CTS) fittings are manufactured from chlorinated polyvinyl chloride (CPVC) for use with SDR-11 piping systems of CTS outside diameter in hot and cold water distribution systems. Check state and local codes for application and restrictions.

CONFORMANCE STANDARDS

Spears® CPVC CTS fittings conform to ASTM D 2846 Specification for Chlorinated Poly (Vinyl Chloride) (CPVC) Plastic Hot and Cold Water Distribution Systems.

WORKING PRESSURE

Spears® CPVC CTS fittings have a continuous working pressure rating of 100 psi at 180°F (82°C) [400 psi at 73°F (23°C)].

PRODUCT CERTIFICATION

Spears® CPVC CTS fittings and Special Reinforced (SR) Thread transition adapters are tested and certified by the National Sanitation Foundation (NSF®) to ASTM D 2846 for use in Hot and Cold Water Distribution Systems, and for safe use in potable water systems under NSF® Standard 14/61.

TESTING

Once the system has been installed and allowed to cure properly, the system shall be tested in accordance with applicable code requirements. When testing with water (hydrostatic testing), the system must be slowly filled with water and the air bled from the highest and furthest points in the system before test pressure is applied. Failure to do so can cause damage to the piping system and could be harmful to the job site personnel should a failure occur. If a leak is found, the affected product must be cut out and discarded. A new section can be installed using couplings or other approved means.

| Part Number | Size | Std Pk | Mstr Ctn | Prod Code |
|-------------|------|--------|----------|-----------|
|-------------|------|--------|----------|-----------|

Tee

Socket x Socket x Socket



NSF® Certified Lead Free

| Part Number | Size | Std Pk | Mstr Ctn | Prod Code |
|-------------|-------|--------|----------|-----------|
| 4101-005 | 1/2 | 100 | 500 | 035 |
| 4101-007 | 3/4 | 50 | 250 | 035 |
| 4101-010 | 1 | 10 | 100 | 035 |
| 4101-012 | 1-1/4 | 10 | 100 | 035 |
| 4101-015 | 1-1/2 | 5 | 50 | 035 |
| 4101-020 | 2 | 5 | 25 | 035 |

Tee - Reducing

Socket x Socket x Socket



NSF® Certified Lead Free

| Part Number | Size | Std Pk | Mstr Ctn | Prod Code |
|-----------------------|---------------|--------|----------|-----------|
| 4101-074 | 1/2X1/2X3/4 | 10 | 100 | 035 |
| 4101-094 | 3/4X1/2X1/2 | 50 | 250 | 035 |
| 4101-095 | 3/4X1/2X3/4 | 25 | 250 | 035 |
| 4101-101 | 3/4X3/4X1/2 | 50 | 250 | 035 |
| 4101-102 ¹ | 3/4X3/4X1 | 10 | 100 | 035 |
| 4101-120 ¹ | 1X1/2X1/2 | 10 | 100 | 035 |
| 4101-121 ¹ | 1X1/2X3/4 | 10 | 100 | 035 |
| 4101-122 ¹ | 1X1/2X1 | 10 | 100 | 035 |
| 4101-124 ¹ | 1X3/4X1/2 | 10 | 100 | 035 |
| 4101-125 | 1X3/4X3/4 | 10 | 100 | 035 |
| 4101-126 ¹ | 1X3/4X1 | 10 | 100 | 035 |
| 4101-130 | 1X1X1/2 | 10 | 100 | 035 |
| 4101-131 | 1X1X3/4 | 10 | 100 | 035 |
| 4101-138 ¹ | 1-1/4X1/2X1/2 | 10 | 80 | 035 |
| 4101-139 ¹ | 1-1/4X1/2X3/4 | 10 | 80 | 035 |

| Part Number | Size | Std Pk | Mstr Ctn | Prod Code |
|-------------|------|--------|----------|-----------|
|-------------|------|--------|----------|-----------|

Tee - Reducing (continued)

Socket x Socket x Socket

| Part Number | Size | Std Pk | Mstr Ctn | Prod Code |
|-----------------------|-------------------|--------|----------|-----------|
| 4101-142 ¹ | 1-1/4X1/2X1-1/4 | 10 | 80 | 035 |
| 4101-146 ¹ | 1-1/4X3/4X1/2 | 10 | 80 | 035 |
| 4101-147 ¹ | 1-1/4X3/4X3/4 | 10 | 80 | 035 |
| 4101-148 ¹ | 1-1/4X3/4X1 | 10 | 80 | 035 |
| 4101-149 ¹ | 1-1/4X3/4X1-1/4 | 10 | 80 | 035 |
| 4101-156 ¹ | 1-1/4X1X1/2 | 10 | 80 | 035 |
| 4101-157 ¹ | 1-1/4X1X3/4 | 10 | 80 | 035 |
| 4101-158 ¹ | 1-1/4X1X1 | 10 | 100 | 035 |
| 4101-159 ¹ | 1-1/4X1X1-1/4 | 10 | 80 | 035 |
| 4101-166 | 1-1/4X1-1/4X1/2 | 10 | 100 | 035 |
| 4101-168 | 1-1/4X1-1/4X1 | 10 | 100 | 035 |
| 4101-167 | 1-1/4X1-1/4X3/4 | 10 | 100 | 035 |
| 4101-169 ¹ | 1-1/4X1-1/4X1-1/2 | 5 | 40 | 035 |
| 4101-173 ¹ | 1-1/2X1/2X1/2 | 5 | 40 | 035 |
| 4101-174 ¹ | 1-1/2X1/2X3/4 | 5 | 40 | 035 |
| 4101-175 ¹ | 1-1/2X1/2X1 | 5 | 40 | 035 |
| 4101-176 ¹ | 1-1/2X1/2X1-1/4 | 5 | 40 | 035 |
| 4101-177 ¹ | 1-1/2X1/2X1-1/2 | 5 | 40 | 035 |
| 4101-182 ¹ | 1-1/2X3/4X1/2 | 5 | 40 | 035 |
| 4101-184 ¹ | 1-1/2X3/4X3/4 | 5 | 40 | 035 |
| 4101-185 ¹ | 1-1/2X3/4X1 | 5 | 40 | 035 |
| 4101-186 ¹ | 1-1/2X3/4X1-1/4 | 5 | 40 | 035 |
| 4101-188 ¹ | 1-1/2X3/4X1-1/2 | 5 | 40 | 035 |
| 4101-193 ¹ | 1-1/2X1X1/2 | 5 | 40 | 035 |
| 4101-194 ¹ | 1-1/2X1X3/4 | 5 | 40 | 035 |
| 4101-195 ¹ | 1-1/2X1X1 | 10 | 100 | 035 |
| 4101-196 ¹ | 1-1/2X1X1-1/4 | 5 | 40 | 035 |
| 4101-197 ¹ | 1-1/2X1X1-1/2 | 5 | 40 | 035 |
| 4101-199 ¹ | 1-1/2X1-1/4X1/2 | 5 | 40 | 035 |
| 4101-201 ¹ | 1-1/2X1-1/4X3/4 | 5 | 40 | 035 |
| 4101-202 ¹ | 1-1/2X1-1/4X1 | 5 | 40 | 035 |



CTS CPVC Product
EverTUFF® CPVC CTS Products

| Part Number | Size | Std Pk | Mstr Ctn | Prod Code |
|-------------|------|--------|----------|-----------|
|-------------|------|--------|----------|-----------|

Tee - Reducing (continued)

Socket x Socket x Socket

| | | | | |
|-----------------------|-------------------|----|-----|-----|
| 4101-203 ¹ | 1-1/2X1-1/4X1-1/4 | 5 | 40 | 035 |
| 4101-204 ¹ | 1-1/2X1-1/4X1-1/2 | 5 | 40 | 035 |
| 4101-209 | 1-1/2X1-1/2X1/2 | 10 | 50 | 035 |
| 4101-210 | 1-1/2X1-1/2X3/4 | 10 | 100 | 035 |
| 4101-211 | 1-1/2X1-1/2X1 | 5 | 50 | 035 |
| 4101-212 ¹ | 1-1/2X1-1/2X1-1/4 | 5 | 50 | 035 |
| 4101-213 ¹ | 1-1/2X1-1/2X2 | 5 | 0 | 035 |
| 4101-216 ¹ | 2X1/2X1/2 | 5 | 0 | 035 |
| 4101-217 ¹ | 2X1/2X3/4 | 5 | 0 | 035 |
| 4101-218 ¹ | 2X1/2X1 | 5 | 0 | 035 |
| 4101-219 ¹ | 2X1/2X1-1/4 | 5 | 0 | 035 |
| 4101-220 ¹ | 2X1/2X1-1/2 | 5 | 0 | 035 |
| 4101-221 ¹ | 2X1/2X2 | 5 | 0 | 035 |
| 4101-222 ¹ | 2X3/4X1/2 | 5 | 0 | 035 |
| 4101-223 ¹ | 2X3/4X3/4 | 5 | 0 | 035 |
| 4101-224 ¹ | 2X3/4X1 | 5 | 0 | 035 |
| 4101-225 ¹ | 2X3/4X1-1/4 | 5 | 0 | 035 |
| 4101-226 ¹ | 2X3/4X1-1/2 | 5 | 0 | 035 |
| 4101-227 ¹ | 2X3/4X2 | 5 | 0 | 035 |
| 4101-228 ¹ | 2X1X1/2 | 5 | 0 | 035 |
| 4101-229 ¹ | 2X1X3/4 | 5 | 0 | 035 |
| 4101-230 ¹ | 2X1X1 | 5 | 0 | 035 |
| 4101-231 ¹ | 2X1X1-1/4 | 5 | 0 | 035 |
| 4101-232 ¹ | 2X1X1-1/2 | 5 | 0 | 035 |
| 4101-233 ¹ | 2X1X2 | 5 | 0 | 035 |
| 4101-234 ¹ | 2X1-1/4X1/2 | 5 | 0 | 035 |
| 4101-235 ¹ | 2X1-1/4X3/4 | 5 | 0 | 035 |
| 4101-236 ¹ | 2X1-1/4X1 | 5 | 0 | 035 |
| 4101-237 ¹ | 2X1-1/2X1/2 | 5 | 0 | 035 |
| 4101-238 ¹ | 2X1-1/2X3/4 | 5 | 0 | 035 |
| 4101-239 ¹ | 2X1-1/2X1 | 5 | 0 | 035 |
| 4101-240 ¹ | 2X1-1/2X1-1/4 | 5 | 0 | 035 |
| 4101-241 ¹ | 2X1-1/2X1-1/2 | 5 | 0 | 035 |
| 4101-242 ¹ | 2X1-1/4X1-1/4 | 5 | 0 | 035 |
| 4101-243 ¹ | 2X1-1/4X1-1/2 | 5 | 0 | 035 |
| 4101-244 ¹ | 2X1-1/4X2 | 5 | 0 | 035 |
| 4101-247 | 2X2X1/2 | 10 | 30 | 035 |
| 4101-248 | 2X2X3/4 | 5 | 25 | 035 |
| 4101-249 | 2X2X1 | 5 | 25 | 035 |
| 4101-250 ¹ | 2X2X1-1/4 | 5 | 25 | 035 |
| 4101-251 | 2X2X1-1/2 | 5 | 25 | 035 |
| 4101-257 ¹ | 2X1-1/2X2 | 5 | 0 | 035 |

¹ Outlet sized with bushing.

Drop Ear Tee - CPVC Fitting with Bracket

Socket x Socket x Socket

NSF® Certified Lead Free

| | | | | |
|------------|-----|----|-----|-----|
| DE4101-005 | 1/2 | 25 | 150 | 035 |
|------------|-----|----|-----|-----|



| Part Number | Size | Std Pk | Mstr Ctn | Prod Code |
|-------------|------|--------|----------|-----------|
|-------------|------|--------|----------|-----------|

90° EII

Socket x Socket

NSF® Certified Lead Free

| | | | | |
|----------|-------|-----|------|-----|
| 4106-005 | 1/2 | 100 | 1000 | 035 |
| 4106-007 | 3/4 | 50 | 500 | 035 |
| 4106-010 | 1 | 10 | 100 | 035 |
| 4106-012 | 1-1/4 | 10 | 100 | 035 |
| 4106-015 | 1-1/2 | 10 | 100 | 035 |
| 4106-020 | 2 | 5 | 100 | 035 |



90° EII - Reducing

Socket x Socket

NSF® Certified Lead Free

| | | | | |
|-----------------------|-------------|----|-----|-----|
| 4106-101 | 3/4X1/2 | 50 | 250 | 035 |
| 4106-130 ¹ | 1X1/2 | 25 | 200 | 035 |
| 4106-131 ¹ | 1X3/4 | 25 | 200 | 035 |
| 4106-167 ¹ | 1-1/4X3/4 | 10 | 80 | 035 |
| 4106-168 ¹ | 1-1/4X1 | 10 | 80 | 035 |
| 4106-209 ¹ | 1-1/2X1/2 | 10 | 0 | 035 |
| 4106-210 ¹ | 1-1/2X3/4 | 10 | 0 | 035 |
| 4106-211 ¹ | 1-1/2X1 | 10 | 0 | 035 |
| 4106-212 ¹ | 1-1/2X1-1/4 | 10 | 0 | 035 |
| 4106-247 ¹ | 2X1/2 | 5 | 30 | 035 |
| 4106-248 ¹ | 2X3/4 | 5 | 30 | 035 |
| 4106-249 ¹ | 2X1 | 5 | 30 | 035 |
| 4106-250 ¹ | 2X1-1/4 | 5 | 30 | 035 |
| 4106-251 ¹ | 2X1-1/2 | 5 | 30 | 035 |

¹ Outlet sized with bushing.



90° EII - Special Reinforced

Socket x SR Fipt - Stainless Steel Collar

NSF® Certified Lead Free

| | | | | |
|------------|-----|----|-----|-----|
| 4107-005SR | 1/2 | 50 | 300 | 035 |
|------------|-----|----|-----|-----|



Drop Ear 90° EII - CPVC Zinc Reinforced(One Piece Unit)

Socket x SR Fipt - Zinc Collar

NSF® Certified Lead Free

| | | | | |
|---------------|-----|----|-----|-----|
| DEZ4107-005SR | 1/2 | 10 | 150 | 035 |
|---------------|-----|----|-----|-----|



Drop Ear 90° EII - CPVC Fitting with Bracket

Socket x Socket

NSF® Certified Lead Free

| | | | | |
|------------|-----|----|-----|-----|
| DE4106-005 | 1/2 | 25 | 150 | 035 |
|------------|-----|----|-----|-----|



CTS CPVC Product
EverTUFF® CPVC CTS Products



| Part Number | Size | Std Pk | Mstr Ctn | Prod Code |
|-------------|------|--------|----------|-----------|
|-------------|------|--------|----------|-----------|

Drop Ear 90° EII - Special Reinforced CPVC Fitting with Bracket

Socket x SR Fipt - Stainless Steel Collar

NSF® Certified Lead Free

| | | | | |
|--------------|-----|----|-----|-----|
| DE4107-005SR | 1/2 | 10 | 200 | 035 |
|--------------|-----|----|-----|-----|



Drop Ear Tee & EII Bracket ONLY

For 4101-005 and 4106-005

| | | | | |
|---------|-----|---|-----|-----|
| DES-005 | 1/2 | 1 | 800 | 035 |
|---------|-----|---|-----|-----|



Drop Ear SR EII Bracket ONLY

For 4107-005SR

| | | | | |
|---------|-----|-----|---|-----|
| DET-005 | 1/2 | 400 | 0 | 035 |
|---------|-----|-----|---|-----|



Drop Ear EII - CPVC One Piece

Socket x Socket

NSF® Certified Lead Free

| | | | | |
|-------------|-----|----|-----|-----|
| DE4106-005C | 1/2 | 50 | 250 | 035 |
|-------------|-----|----|-----|-----|



Drop Ear EII - CPVC One Piece with Gasket

Socket x Fipt

NSF® Certified Lead Free

| | | | | |
|--------------|-----|----|-----|-----|
| DE4107-005CG | 1/2 | 50 | 250 | 035 |
|--------------|-----|----|-----|-----|



Drop Ear EII - Stainless Steel Thread

Socket x SS Fipt

NSF® Certified Lead Free

| | | | | |
|--------------|-----|-----|---|-----|
| DE4107-005SS | 1/2 | 100 | 0 | 036 |
|--------------|-----|-----|---|-----|



Drop Ear EII - Stainless Steel Thread/CPVC Body

Socket x SS Fipt

NSF® Certified Lead Free

| | | | | |
|---------------|-----|-----|---|-----|
| DE4107-005CSS | 1/2 | 100 | 0 | 036 |
|---------------|-----|-----|---|-----|



90° Street EII

Spigot x Socket

NSF® Certified Lead Free

| | | | | |
|----------|-----|-----|-----|-----|
| 4109-005 | 1/2 | 100 | 500 | 035 |
|----------|-----|-----|-----|-----|



| Part Number | Size | Std Pk | Mstr Ctn | Prod Code |
|-------------|------|--------|----------|-----------|
|-------------|------|--------|----------|-----------|

90° Street EII (continued)

Spigot x Socket

| | | | | |
|----------|-----|----|-----|-----|
| 4109-007 | 3/4 | 50 | 250 | 035 |
| 4109-010 | 1 | 50 | 100 | 035 |

90° Stub Out EII

Socket x Closed End

NSF® Certified Lead Free

| | | | | |
|-----------|-----|----|---|-----|
| S4106-005 | 1/2 | 50 | 0 | 035 |
|-----------|-----|----|---|-----|



45° EII

Socket x Socket

NSF® Certified Lead Free

| | | | | |
|----------|-------|-----|-----|-----|
| 4117-005 | 1/2 | 100 | 500 | 035 |
| 4117-007 | 3/4 | 50 | 250 | 035 |
| 4117-010 | 1 | 10 | 100 | 035 |
| 4117-012 | 1-1/4 | 10 | 100 | 035 |
| 4117-015 | 1-1/2 | 10 | 100 | 035 |
| 4117-020 | 2 | 10 | 100 | 035 |



45° Street EII

Spigot x Socket

NSF® Certified Lead Free

| | | | | |
|----------|-----|-----|-----|-----|
| 4127-005 | 1/2 | 100 | 500 | 035 |
| 4127-007 | 3/4 | 50 | 250 | 035 |
| 4127-010 | 1 | 50 | 250 | 035 |



Coupling

Socket x Socket

NSF® Certified Lead Free

| | | | | |
|----------|-------|-----|------|-----|
| 4129-005 | 1/2 | 100 | 1000 | 035 |
| 4129-007 | 3/4 | 50 | 500 | 035 |
| 4129-010 | 1 | 10 | 100 | 035 |
| 4129-012 | 1-1/4 | 10 | 100 | 035 |
| 4129-015 | 1-1/2 | 10 | 100 | 035 |
| 4129-020 | 2 | 10 | 50 | 035 |



Coupling - Reducer

Socket x Socket

NSF® Certified Lead Free

| | | | | |
|----------|---------|----|-----|-----|
| 4129-101 | 3/4X1/2 | 50 | 250 | 035 |
| 4129-130 | 1X1/2 | 25 | 150 | 035 |
| 4129-131 | 1X3/4 | 25 | 150 | 035 |



Made in the U.S.A.

Suitable for Oil-Free air handling to 25 psi, not for distribution of compressed air or gas
See MSRP-1 Sheet or Check Spears® On-line Catalog at www.spearsmfg.com for Pricing



CTS CPVC Product
EverTUFF® CPVC CTS Products

| Part Number | Size | Std Pk | Mstr Ctn | Prod Code |
|-------------|------|--------|----------|-----------|
|-------------|------|--------|----------|-----------|

Coupling - Reducer (continued)

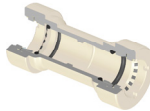
Socket x Socket

| | | | | |
|-----------------------|-------------|----|-----|-----|
| 4129-166 ¹ | 1-1/4X1/2 | 10 | 120 | 035 |
| 4129-167 ¹ | 1-1/4X3/4 | 10 | 120 | 035 |
| 4129-168 ¹ | 1-1/4X1 | 10 | 120 | 035 |
| 4129-209 ¹ | 1-1/2X1/2 | 10 | 80 | 035 |
| 4129-210 ¹ | 1-1/2X3/4 | 10 | 60 | 035 |
| 4129-211 ¹ | 1-1/2X1 | 10 | 60 | 035 |
| 4129-212 ¹ | 1-1/2X1-1/4 | 10 | 120 | 035 |
| 4129-247 ¹ | 2X1/2 | 10 | 0 | 035 |
| 4129-248 ¹ | 2X3/4 | 10 | 0 | 035 |
| 4129-249 | 2X1 | 10 | 0 | 035 |
| 4129-250 ¹ | 2X1-1/4 | 10 | 0 | 035 |
| 4129-251 ¹ | 2X1-1/2 | 10 | 0 | 035 |

¹ Outlet sized with bushing.

GripLoc™ Coupling

WARNING: DO NOT INSERT FINGERS
Grip Socket x Grip Socket - Uses No Solvent
Cement



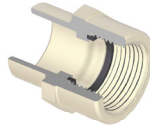
NSF® Certified Lead Free

| | | | | |
|------------|-----|----|----|-----|
| GL4129-005 | 1/2 | 1 | 75 | 135 |
| GL4129-007 | 3/4 | 1 | 50 | 135 |
| GL4129-010 | 1 | 12 | 24 | 135 |

Note: The GripLoc™ is water tight, permanent and cannot be removed.

Female Adapter - with Gasket

Socket x Thread

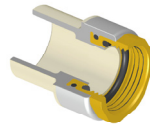


For Cold Water Service Only - NSF® Certified Lead Free

| | | | | |
|------------|-----|-----|-----|-----|
| 4135-005OR | 1/2 | 100 | 500 | 035 |
| 4135-007OR | 3/4 | 50 | 250 | 035 |
| 4135-010OR | 1 | 10 | 100 | 035 |

Female Adapter - Gasket Sealed Brass Thread Transition

Socket x Gasket Fipt - Use NO Thread Sealant

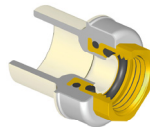


NSF® Certified Lead Free

| | | | | |
|-------------|-------|----|-----|-----|
| 4135-005BRG | 1/2 | 25 | 150 | 033 |
| 4135-007BRG | 3/4 | 25 | 150 | 033 |
| 4135-010BRG | 1 | 15 | 90 | 033 |
| 4135-012BRG | 1-1/4 | 15 | 60 | 033 |
| 4135-015BRG | 1-1/2 | 10 | 40 | 033 |
| 4135-020BRG | 2 | 8 | 32 | 033 |

Female Adapter - Reducing Gasket Sealed Brass Thread Transition

Socket x Gasket Fipt - Use NO Thread Sealant



NSF® Certified Lead Free

| | | | | |
|-------------|---------|----|-----|-----|
| 4135-101BRG | 3/4X1/2 | 25 | 150 | 033 |
| 4135-130BRG | 1X1/2 | 50 | 0 | 033 |

| Part Number | Size | Std Pk | Mstr Ctn | Prod Code |
|-------------|------|--------|----------|-----------|
|-------------|------|--------|----------|-----------|

Female Adapter - CPVC Special Reinforced

Socket x SR Fipt - Stainless Steel Collar



NSF® Certified Lead Free

| | | | | |
|------------|-----|----|-----|-----|
| 4135-005SR | 1/2 | 25 | 200 | 036 |
| 4135-007SR | 3/4 | 25 | 300 | 036 |
| 4135-010SR | 1 | 5 | 100 | 036 |

Female Adapter - CPVC Reducing Special Reinforced

Socket x SR Fipt - Stainless Steel Collar



NSF® Certified Lead Free

| | | | | |
|------------|-------|----|-----|-----|
| 4135-131SR | 1X3/4 | 25 | 150 | 036 |
|------------|-------|----|-----|-----|

Female Adapter - Stainless Steel Thread Transition

Socket x SS Fipt



NSF® Certified Lead Free

| | | | | |
|------------|-------|----|-----|-----|
| 4135-005SS | 1/2 | 25 | 150 | 036 |
| 4135-007SS | 3/4 | 25 | 100 | 036 |
| 4135-010SS | 1 | 25 | 50 | 036 |
| 4135-012SS | 1-1/4 | 16 | 0 | 036 |
| 4135-015SS | 1-1/2 | 16 | 0 | 036 |
| 4135-020SS | 2 | 8 | 0 | 036 |

Male Adapter

Mipt x Socket



For Cold Water Service Only - NSF® Certified Lead Free

| | | | | |
|----------|-------|-----|------|-----|
| 4136-005 | 1/2 | 100 | 1000 | 035 |
| 4136-007 | 3/4 | 50 | 500 | 035 |
| 4136-010 | 1 | 10 | 100 | 035 |
| 4136-012 | 1-1/4 | 10 | 100 | 035 |
| 4136-015 | 1-1/2 | 10 | 100 | 035 |
| 4136-020 | 2 | 10 | 100 | 035 |

Male Adapter - Reducing

Mipt x Socket



For Cold Water Service Only - NSF® Certified Lead Free

| | | | | |
|----------|---------|----|-----|-----|
| 4136-074 | 1/2X3/4 | 50 | 250 | 035 |
| 4136-101 | 3/4X1/2 | 50 | 250 | 035 |

Male Adapter - Spigot

Mipt x Spigot



For Cold Water Service Only - NSF® Certified Lead Free

| | | | | |
|----------|-----|----|-----|-----|
| 4161-005 | 1/2 | 50 | 700 | 035 |
|----------|-----|----|-----|-----|

CTS CPVC Product
EverTUFF® CPVC CTS Products



| Part Number | Size | Std Pk | Mstr Ctn | Prod Code |
|-------------|------|--------|----------|-----------|
|-------------|------|--------|----------|-----------|

Male Adapter - Internal Stainless Steel Reinforced

R Mipt x Socket - Stainless Steel Sleeve



NSF® Certified Lead Free

| | | | | |
|-----------|-----|----|-----|-----|
| 4136-005R | 1/2 | 25 | 300 | 036 |
| 4136-007R | 3/4 | 25 | 300 | 036 |
| 4136-010R | 1 | 10 | 120 | 036 |

Male Adapter - Transition with CPVC Lined Brass Thread

Brass Mipt x Socket



NSF® Certified Lead Free

| | | | | |
|------------|-------|----|-----|-----|
| 4136-005BR | 1/2 | 60 | 360 | 033 |
| 4136-007BR | 3/4 | 40 | 160 | 033 |
| 4136-010BR | 1 | 10 | 60 | 033 |
| 4136-012BR | 1-1/4 | 10 | 60 | 033 |
| 4136-015BR | 1-1/2 | 10 | 40 | 033 |
| 4136-020BR | 2 | 8 | 32 | 033 |

Male Adapter - Transition with Stainless Steel Thread

Socket x SS Mipt



NSF® Certified Lead Free

| | | | | |
|------------|-------|----|-----|-----|
| 4136-005SS | 1/2 | 25 | 150 | 036 |
| 4136-007SS | 3/4 | 25 | 100 | 036 |
| 4136-010SS | 1 | 25 | 50 | 036 |
| 4136-012SS | 1-1/4 | 16 | 0 | 036 |
| 4136-015SS | 1-1/2 | 16 | 0 | 036 |
| 4136-020SS | 2 | 8 | 0 | 036 |

Reducer Bushing

Spigot x Socket



NSF® Certified Lead Free

| | | | | |
|----------|-------------|----|-----|-----|
| 4137-101 | 3/4X1/2 | 10 | 500 | 035 |
| 4137-130 | 1X1/2 | 10 | 100 | 035 |
| 4137-131 | 1X3/4 | 10 | 100 | 035 |
| 4137-166 | 1-1/4X1/2 | 10 | 100 | 035 |
| 4137-167 | 1-1/4X3/4 | 10 | 100 | 035 |
| 4137-168 | 1-1/4X1 | 10 | 100 | 035 |
| 4137-209 | 1-1/2X1/2 | 10 | 100 | 035 |
| 4137-210 | 1-1/2X3/4 | 10 | 100 | 035 |
| 4137-211 | 1-1/2X1 | 10 | 100 | 035 |
| 4137-212 | 1-1/2X1-1/4 | 10 | 100 | 035 |
| 4137-247 | 2X1/2 | 10 | 50 | 035 |
| 4137-248 | 2X3/4 | 10 | 50 | 035 |
| 4137-249 | 2X1 | 10 | 50 | 035 |
| 4137-250 | 2X1-1/4 | 10 | 50 | 035 |
| 4137-251 | 2X1-1/2 | 10 | 100 | 035 |

| Part Number | Size | Std Pk | Mstr Ctn | Prod Code |
|-------------|------|--------|----------|-----------|
|-------------|------|--------|----------|-----------|

Transition Bushing

IPS Spigot x CTS Socket



NSF® Certified Lead Free

| | | | | |
|----------|-------|----|-----|-----|
| 4140-005 | 1/2 | 10 | 600 | 035 |
| 4140-007 | 3/4 | 10 | 100 | 035 |
| 4140-010 | 1 | 10 | 100 | 035 |
| 4140-012 | 1-1/4 | 10 | 100 | 035 |
| 4140-015 | 1-1/2 | 10 | 100 | 035 |
| 4140-020 | 2 | 10 | 50 | 035 |

Transition Coupling

IPS Socket x CTS Socket



NSF® Certified Lead Free

| | | | | |
|----------|-----|----|-----|-----|
| 4141-007 | 3/4 | 25 | 300 | 035 |
| 4141-010 | 1 | 10 | 150 | 035 |

Cap

Socket

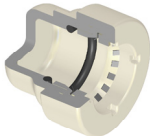


NSF® Certified Lead Free

| | | | | |
|----------|-------|-----|-----|-----|
| 4147-005 | 1/2 | 100 | 500 | 035 |
| 4147-007 | 3/4 | 50 | 250 | 035 |
| 4147-010 | 1 | 10 | 100 | 035 |
| 4147-012 | 1-1/4 | 10 | 100 | 035 |
| 4147-015 | 1-1/2 | 10 | 100 | 035 |
| 4147-020 | 2 | 10 | 50 | 035 |

GripLoc™ Cap

**WARNING: DO NOT INSERT FINGERS
Grip Socket - Uses No Solvent Cement**



NSF® Certified Lead Free

| | | | | |
|------------|-----|----|-----|-----|
| GL4147-005 | 1/2 | 25 | 200 | 135 |
| GL4147-007 | 3/4 | 25 | 150 | 135 |
| GL4147-010 | 1 | 10 | 50 | 135 |

Note: The GripLoc™ is water tight, permanent and cannot be removed.

Union

Socket with EPDM O-ring Seal



100 psi Maximum Internal Pressure @ 180°F (82°C) -
NSF® Certified Lead Free

| | | | | |
|----------|-------|----|-----|-----|
| 4197-005 | 1/2 | 25 | 150 | 035 |
| 4197-007 | 3/4 | 12 | 48 | 035 |
| 4197-010 | 1 | 36 | 0 | 035 |
| 4197-012 | 1-1/4 | 12 | 48 | 035 |
| 4197-015 | 1-1/2 | 12 | 0 | 035 |
| 4197-020 | 2 | 6 | 36 | 035 |



CTS CPVC Product
EverTUFF® CPVC CTS Products

| Part Number | Size | Std Pk | Mstr Ctn | Prod Code |
|-------------|------|--------|----------|-----------|
|-------------|------|--------|----------|-----------|

Union - Special Reinforced

Socket x SR Fipt - Stainless Steel Collar

100 psi Maximum Internal Pressure @ 180°F (82°C) - NSF® Certified Lead Free

| | | | | |
|------------|-----|----|-----|-----|
| 4199-005SR | 1/2 | 20 | 120 | 036 |
| 4199-007SR | 3/4 | 10 | 60 | 036 |
| 4199-010SR | 1 | 10 | 40 | 036 |

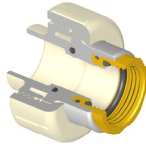


Union - Gasket Sealed Brass Thread Transition

Socket x Gasket Fipt - Use No Thread Sealant

100 psi Maximum Internal Pressure @ 180°F (82°C) - NSF® Certified Lead Free

| | | | | |
|-------------|-----|----|-----|-----|
| 4199-005BRG | 1/2 | 20 | 120 | 033 |
| 4199-007BRG | 3/4 | 10 | 60 | 033 |
| 4199-010BRG | 1 | 10 | 40 | 033 |



Transition Compression Adapter

Comp w/Gasket x CPVC Spigot

NSF® Certified Lead Free

| | | | | |
|---------|-----|----|-----|-----|
| TCA-005 | 1/2 | 25 | 200 | 035 |
| TCA-007 | 3/4 | 25 | 100 | 035 |



Transition Union - Brass Compression

Brass Comp x CPVC Spigot

NSF® Certified Lead Free

| | | | | |
|---------|-----|-----|---|-----|
| TUC-005 | 1/2 | 150 | 0 | 036 |
| TUC-007 | 3/4 | 75 | 0 | 036 |



Transition Union - Brass Male Thread

Brass Mipt x CPVC Spigot

NSF® Certified Lead Free

| | | | | |
|---------|-----|-----|---|-----|
| TUM-005 | 1/2 | 150 | 0 | 036 |
| TUM-007 | 3/4 | 75 | 0 | 036 |



Transition Union - Brass Female Thread

Brass Fipt x CPVC Spigot

NSF® Certified Lead Free

| | | | | |
|---------|-----|-----|---|-----|
| TUF-005 | 1/2 | 150 | 0 | 036 |
| TUF-007 | 3/4 | 75 | 0 | 036 |



| Part Number | Size | Std Pk | Mstr Ctn | Prod Code |
|-------------|------|--------|----------|-----------|
|-------------|------|--------|----------|-----------|

CPVC-PEX Transition Spigot Adapters

Spigot x PEX Barb-Crimp Style

CPVC Spigot is also (Socket) NSF® Certified Lead Free

| | | | | |
|---------|-----------|----|-----|-----|
| TPC-005 | 1/2 | 25 | 150 | 036 |
| TPC-007 | 3/4 (1/2) | 25 | 100 | 036 |
| TPC-010 | 1 (3/4) | 25 | 50 | 036 |



ASTM F1807 Standard PEX Connector, Stainless Steel

CPVC-PEX Transition Socket Adapters

Socket x PEX Barb-Crimp Style

CPVC Socket is also (Spigot) NSF® Certified Lead Free

| | | | | |
|-----------|-----------|----|-----|-----|
| TPC-005-S | 1/2 (3/4) | 25 | 150 | 036 |
| TPC-007-S | 3/4 (1) | 25 | 100 | 036 |
| TPC-010-S | 1 (1-1/4) | 50 | 300 | 036 |



ASTM F1807 Standard PEX Connector, Stainless Steel

Water Hammer Arrester

Spigot

NSF® Certified Lead Free

| | | | | |
|---------|-----|----|-----|-----|
| WHA-005 | 1/2 | 25 | 100 | 035 |
|---------|-----|----|-----|-----|



Quarter Turn Angle Supply Stop

Socket x NPT

100 psi @ 180°F (82°C)

Male Thread for Connection to Flexible Supply Line having 1/2" Female NPT Thread Inlet - NSF® Certified Lead Free

| | | | | |
|----------|-----|----|-----|-----|
| 7722-005 | 1/2 | 50 | 400 | 217 |
|----------|-----|----|-----|-----|



Quarter Turn Angle Supply Stop

SR Fipt x NPT

100 psi @ 180°F (82°C)

Male Thread for Connection to Flexible Supply Line having 1/2" Female NPT Thread Inlet - NSF® Certified Lead Free

| | | | | |
|------------|-----|----|-----|-----|
| 7721-005SR | 1/2 | 50 | 400 | 217 |
|------------|-----|----|-----|-----|



CTS CPVC Product
EverTUFF® CPVC CTS Products



| Part Number | Size | Std Pk | Mstr Ctn | Prod Code |
|-------------|------|--------|----------|-----------|
|-------------|------|--------|----------|-----------|

Quarter Turn Angle Supply Stop

SR Fipt x Comp Thread

100 psi @ 180°F (82°C)
Male Thread for Connection to Flexible Supply Line having Female 3/8" Compression Thread Inlet - NSF® Certified Lead Free

| | | | | |
|----------------------------|----------------|----|-----|-----|
| 7721-073SR | 1/2X3/8 | 50 | 400 | 217 |
|----------------------------|----------------|----|-----|-----|



Quarter Turn Angle Supply Stop

Socket x Comp Thread

100 psi @ 180°F (82°C)
Male Thread for Connection to Flexible Supply Line having 1/4", 3/8" or 1/2" Female Compression Thread Inlet - NSF® Certified Lead Free

| | | | | |
|----------------------------|----------------|----|-----|-----|
| 7722CM-072 | 1/2X1/4 | 72 | 0 | 217 |
| 7722-073 | 1/2X3/8 | 50 | 400 | 217 |
| 7722CM-005 | 1/2 | 72 | 0 | 217 |



Quarter Turn Straight Supply Stop

Socket x Comp Thread

100 psi @ 180°F (82°C)
Male Thread for Connection to Flexible Supply Line having Female 3/8" or 1/2" Compression Thread Inlet - NSF® Certified Lead Free

| | | | | |
|----------------------------|----------------|----|---|-----|
| 7422CM-073 | 1/2X3/8 | 72 | 0 | 217 |
| 7422CM-005 | 1/2 | 72 | 0 | 217 |



Quarter Turn Straight Supply Stop

Socket x NPT

100 psi @ 180°F (82°C)
Male Thread for Connection to Flexible Supply Line having Female 1/2" NPT Thread Inlet - NSF® Certified Lead Free

| | | | | |
|--------------------------|------------|----|---|-----|
| 7422-005 | 1/2 | 72 | 0 | 217 |
|--------------------------|------------|----|---|-----|



Ball Valve - Commercial CTS

Socket with EPDM O-ring Seal

100 psi Maximum Internal Pressure @ 180°F (82°C)
NSF® Certified Lead Free

| | | | | |
|--------------------------|--------------|----|-----|-----|
| 1922-005 | 1/2 | 25 | 200 | 217 |
| 1922-007 | 3/4 | 24 | 0 | 217 |
| 1922-010 | 1 | 25 | 0 | 217 |
| 1922-012 | 1-1/4 | 8 | 0 | 217 |
| 1922-015 | 1-1/2 | 6 | 0 | 217 |
| 1922-020 | 2 | 4 | 0 | 217 |



| Part Number | Size | Std Pk | Mstr Ctn | Prod Code |
|-------------|------|--------|----------|-----------|
|-------------|------|--------|----------|-----------|

Ball Valve - Residential CTS

Socket x Socket

NSF® Certified Lead Free

| | | | | |
|---------------------------|--------------|----|----|-----|
| 1922R-005 | 1/2 | 72 | 0 | 217 |
| 1922R-007 | 3/4 | 36 | 0 | 217 |
| 1922R-010 | 1 | 24 | 0 | 217 |
| 1922R-012 | 1-1/4 | 8 | 32 | 217 |
| 1922R-015 | 1-1/2 | 6 | 0 | 217 |
| 1922R-020 | 2 | 4 | 16 | 217 |



Stop Valve - Red Handle

Socket x Socket

NSF® Certified Lead Free

| | | | | |
|--------------------------|------------|----|---|-----|
| 8422-005 | 1/2 | 36 | 0 | 217 |
| 8422-007 | 3/4 | 36 | 0 | 217 |



Stop Valve - Clear Handle

Socket x Socket

NSF® Certified Lead Free

| | | | | |
|----------------------------|------------|----|---|-----|
| 8422CH-005 | 1/2 | 36 | 0 | 217 |
| 8422CH-007 | 3/4 | 36 | 0 | 217 |



Stop & Waste Valve

Socket x Socket

NSF® Certified Lead Free

| | | | | |
|---------------------------|------------|----|---|-----|
| 8422W-005 | 1/2 | 36 | 0 | 217 |
| 8422W-007 | 3/4 | 36 | 0 | 217 |



Boiler Drain Valve

Socket x MHT

NSF® Certified Lead Free

| | | | | |
|--------------------------|------------|----|---|-----|
| 82MH-005 | 1/2 | 36 | 0 | 217 |
| 82MH-007 | 3/4 | 36 | 0 | 217 |



Pipe - CPVC CTS SDR 11

10' Lengths, Priced Per Foot

NSF® Certified Lead Free

| | | | | |
|-------------------------|--------------|-----|---|-----|
| CTS-005 | 1/2 | 500 | 0 | 034 |
| CTS-007 | 3/4 | 250 | 0 | 034 |
| CTS-010 | 1 | 150 | 0 | 034 |
| CTS-012 | 1-1/4 | 100 | 0 | 034 |
| CTS-015 | 1-1/2 | 100 | 0 | 034 |





CTS CPVC Product
EverTUFF® CPVC CTS Products

| Part Number | Size | Std Pk | Mstr Ctn | Prod Code |
|-------------|------|--------|----------|-----------|
|-------------|------|--------|----------|-----------|

Pipe - CPVC CTS SDR 11 (continued)

10' Lengths, Priced Per Foot

| | | | | |
|---------|---|----|---|-----|
| CTS-020 | 2 | 50 | 0 | 034 |
|---------|---|----|---|-----|

• Pipe sold in bag quantities only - no broken bags • No return on Pipe • Large orders may be shipped directly from Spears® manufacturing facility. Note: Multiple drops may be made on TL shipments. Contact Spears® Regional Distribution Center for requirements and drop-off charges. • See Spears® Manufacturing Company Terms and Conditions of Sale for freight requirements.

Pipe - CPVC CTS SDR 11

20' Lengths, Priced Per Foot



NSF® Certified Lead Free

| | | | | |
|------------|-------|------|---|-----|
| CTS-005-20 | 1/2 | 1000 | 0 | 034 |
| CTS-007-20 | 3/4 | 500 | 0 | 034 |
| CTS-010-20 | 1 | 300 | 0 | 034 |
| CTS-012-20 | 1-1/4 | 200 | 0 | 034 |
| CTS-015-20 | 1-1/2 | 200 | 0 | 034 |
| CTS-020-20 | 2 | 100 | 0 | 034 |

Pipe - CPVC CTS Coiled SDR 11

100 ft. Coil, Priced Per Foot



NSF® Certified Lead Free

| | | | | |
|-------------|-----|-----|---|-----|
| CTS-005-100 | 1/2 | 100 | 0 | 034 |
| CTS-007-100 | 3/4 | 100 | 0 | 034 |
| CTS-010-100 | 1 | 100 | 0 | 034 |

CPVC CTS COILED PIPE WEIGHTS:

CTS-005-100 Weight per Foot .090 lbs; per Coil Weight 9 lbs.
CTS-007-100 Weight per Foot .149 lbs; per Coil Weight 14.9 lbs.
CTS-010-100 Weight per Foot .239 lbs; per Coil Weight 23.9 lbs.
WARNING: Banded coils will expand when opened. Exercise caution to avoid injury during banding removal.

CTS Tubing Straps

Std Pk Bag of 25 For Anchoring CTS Pipe

Priced Each - Sold in Full Bag Quantity Only

| | | | | |
|------|-----|----|-----|-----|
| 556A | 1/2 | 25 | 500 | 299 |
| 556B | 3/4 | 25 | 500 | 299 |

CTS Tube Talon with Nail

Std Pk Bag Quantities as Specified. For Anchoring CTS Pipe

Priced Each - Sold in Full Bag Quantity Only

| | | | | |
|------|-----|-----|------|-----|
| 555A | 1/2 | 100 | 1000 | 299 |
| 555B | 3/4 | 100 | 1000 | 299 |
| 555C | 1 | 50 | 500 | 299 |

| Part Number | Size | Std Pk | Mstr Ctn | Prod Code |
|-------------|------|--------|----------|-----------|
|-------------|------|--------|----------|-----------|



Solvent Cement -EverTUFF® CTS One Step

NSF® Certified Lead Free

| | | | | |
|----------|----------|----|---|-----|
| CTS5-005 | 1/4 Pint | 24 | 0 | 701 |
| CTS5-010 | 1/2 Pint | 24 | 0 | 701 |
| CTS5-020 | Pint | 12 | 0 | 701 |
| CTS5-030 | Quart | 12 | 0 | 701 |
| CTS5-040 | Gallon | 6 | 0 | 701 |

Cap Daubers

| | | | | |
|--------|-------------------|----|-----|-----|
| DHP-38 | 3/8" for 1/2 Pint | 50 | 400 | 710 |
| DHP-50 | 1/2" for 1/2 Pint | 50 | 400 | 710 |
| DHP-75 | 3/4" for 1/2 Pint | 50 | 0 | 710 |
| DP-50 | 1/2" for Pint | 50 | 0 | 710 |
| DP-75 | 3/4" for Pint | 50 | 0 | 710 |
| DP-125 | 1-1/4" for Pint | 50 | 0 | 710 |
| DQ-50 | 1/2" for Quart | 50 | 0 | 710 |
| DQ-75 | 3/4" for Quart | 50 | 0 | 710 |
| DQ-125 | 1-1/4" for Quart | 50 | 0 | 710 |

3/8" for pipe to 3/4" • 1/2" for pipe to 1" • 3/4" for pipe to 1-1/2" • 1-1/4" for pipe 1-1/2" to 3"

Can-Mate Daubers

Adjustable Plastic Applicator with Telescoping Stem for use with Standard 1/2 Pint, Pint and Quart Cans

| | | | | |
|--------|--------|----|---|-----|
| CM-50 | 1/2" | 50 | 0 | 710 |
| CM-75 | 3/4" | 50 | 0 | 710 |
| CM-150 | 1-1/4" | 50 | 0 | 710 |

1/2" for pipe to 1" • 3/4" for pipe to 1-1/2" • 1-1/4" for pipe 1-1/2" to 3"

Deburring Tool

Cone Type for pipe from 1/2" through 2"

| | | | | |
|-------|-----------------|---|---|-----|
| DEB-2 | 1/2" to 2" Pipe | 1 | 6 | 710 |
|-------|-----------------|---|---|-----|