



SERVICE PARTS LIST

SPECIFY CATALOG NO. AND SERIAL NO. WHEN ORDERING PARTS		REVISED BULLETIN	DATE
1-1/2" (40mm) CHIPPER HAMMER		54-24-1150	Dec. 2006
CATALOG NO.	5327-21	WIRING INSTRUCTION	
STARTING SERIAL NO.	A24B	58-01-0035	

EXAMPLE:
 Component Parts (Small #) Are Included
 When Ordering The Assembly (Large #).

● = Component of the 14-46-9276
 Hammer Service Kit

★ = Part number change
 from previous service
 parts list.

**SEE BACK PAGE OF THIS
 BULLETIN FOR ADDITIONAL
 LUBRICATION AND
 SERVICE NOTES**

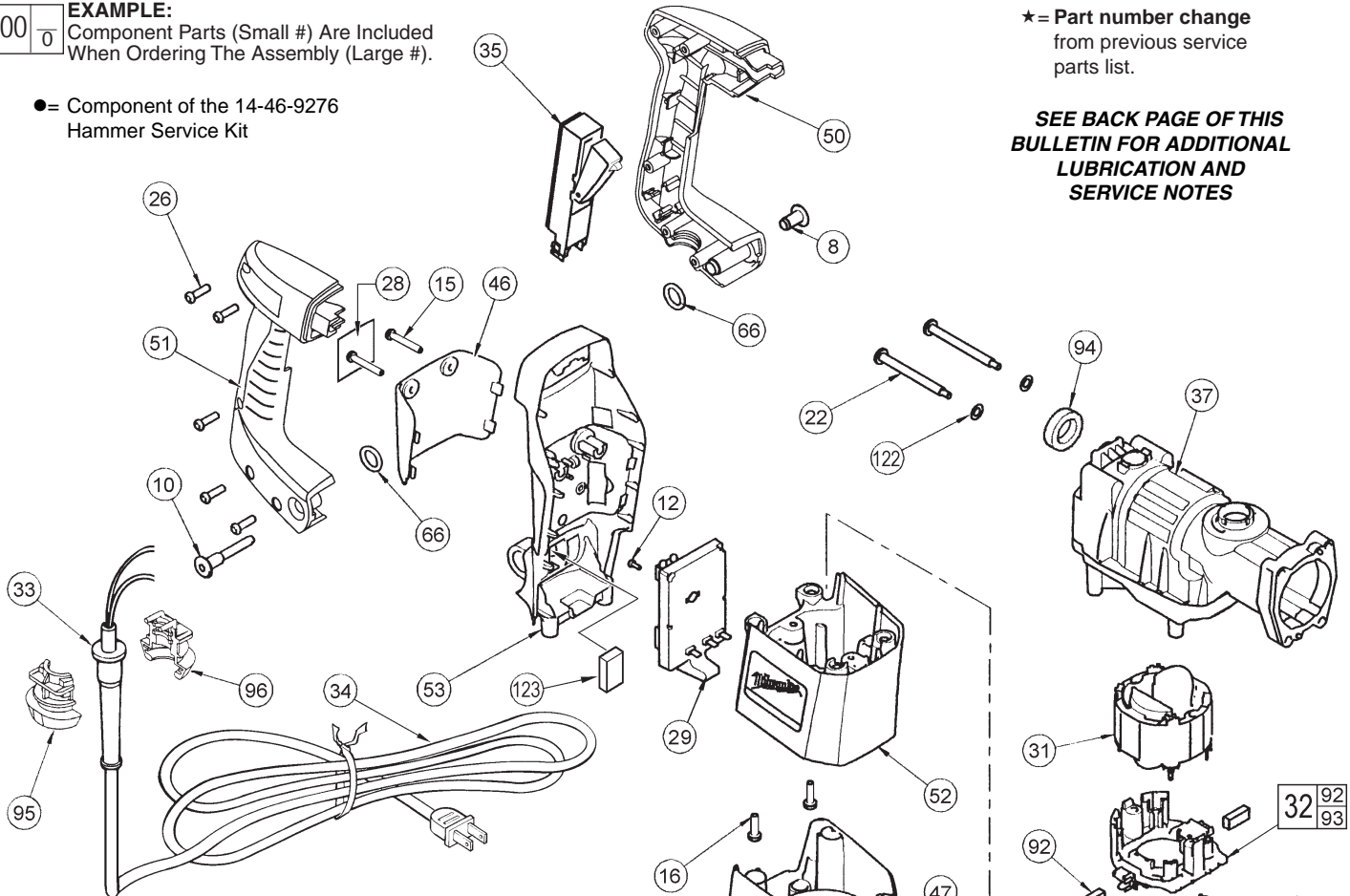


FIG.	PART NO.	DESCRIPTION OF PART	NO. REQ.
1	02-04-0845	Ball Bearing	(1)
3	22-84-0875	Fan	(1)
4	02-04-1206	Ball Bearing	(1)
8	05-59-0100	Pivot Nut	(1)
10	05-77-0100	Pivot Bolt	(1)
12	05-88-5910	K35 x 8mm Pan Hd. Plastite Screw	(1)
13	05-88-5930	K60 x 20mm Pan Hd. Plastite Screw	(2)
14	05-88-5940	K60 x 40mm Pan Hd. Plastite Screw	(2)
15	05-88-9920	K50 x 30mm Pan Hd. PT-DG Screw	(2)
16	05-88-9930	K60 x 18mm Pan Hd. PT-DG Screw	(2)
17	05-88-9940	K60 x 120mm Pan Hd. PT-DG Screw	(2)
22	06-81-1805	Pan Hd. Cap Screw	(2)
23	06-82-7375	Slotted Plastite Torx Screw T-20	(2)
26	06-95-6290	K50 x 18mm Pan Hd. Plastite Screw	(5)
28	12-20-1227	Service Nameplate Kit	(1)
★ 29	14-20-0851	Electronics Assembly	(1)
★ 30	16-30-0642	Armature Kit	(1)
31	18-30-1040	Field	(1)
★ 32	22-22-1531	Brush Card Assembly	(1)
33	44-76-0210	Cord Protector	(1)
34	22-64-0145	Cord Set	(1)
35	23-66-2197	Switch	(1)
37	14-46-2510	Crankcase Service Assembly	(1)
46	31-15-0623	Module Cover	(1)
47	31-15-2053	Motor Cover	(1)
50	31-44-2231	Left Handle Half	(1)
51	31-44-2241	Right Handle Half	(1)
52	31-50-5101	Motor Housing	(1)
53	31-55-0281	Rear Shroud	(1)
63	34-40-4215 ●	O-Ring	(1)
66	34-40-4490	O-Ring	(2)
86	42-96-0125 ●	Bearing Cup	(1)

FIG.	PART NO.	DESCRIPTION OF PART	NO. REQ.
★ 92	22-18-1353 ●	Carbon Brush Kit (Includes 2 Brushes)	(1)
93	40-50-2220	Brush Spring	(2)
94	44-34-0300	Rubber Handle Mount	(1)
95	31-17-0270	Cord Clamp	(1)
96	31-17-0260	Cord Clamp	(1)
122	45-88-8555	Rubber Washer	(2)
123	45-06-0535	Handle Seal	(1)