



SERVICE PARTS LIST

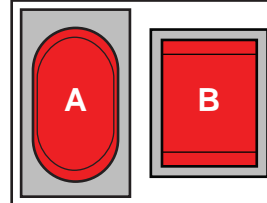
BULLETIN NO.
54-05-0075

SPECIFY CATALOG NO. AND SERIAL NO. WHEN ORDERING PARTS		REVISED BULLETIN	DATE
7.5 GALLON WET OR DRY VACUUM CLEANER			Nov. 2014
CATALOG NO. 8936-20	STARTING SERIAL NO. SERIES S-1	WIRING INSTRUCTION 58-01-1161	

EXAMPLE:

00	0
----	---

 Component Parts (Small #) Are Included
 When Ordering The Assembly (Large #).



NOTE: For 8936-20 (Series-1) Vacuums:
 The original switch design 'A' is no longer available. The service replacement switch 'B' will not fit in the opening of the original motor housing cover. If an 'A' switch needs replacing, **No. 31-15-0531** (Motor Housing Cover Service Kit) must be order. The kit contains the new switch, cover, circuit breaker, receptacle and wiring instructions.

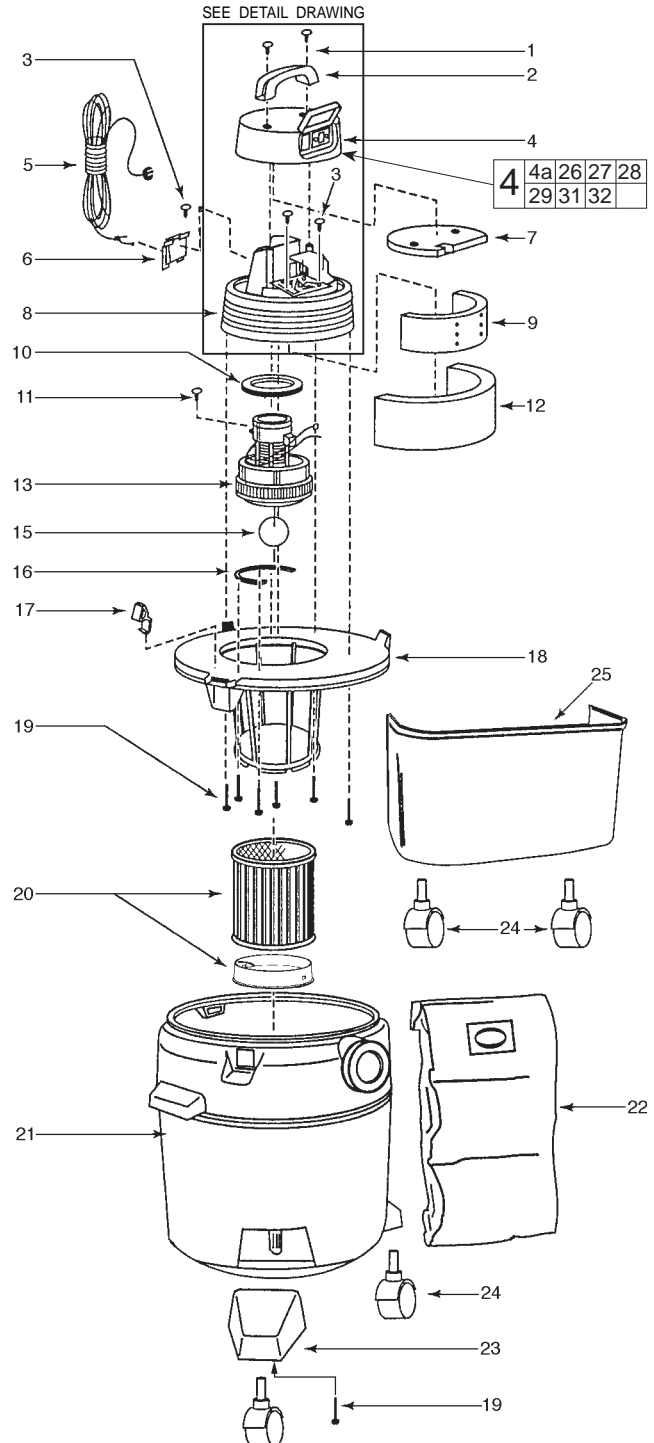
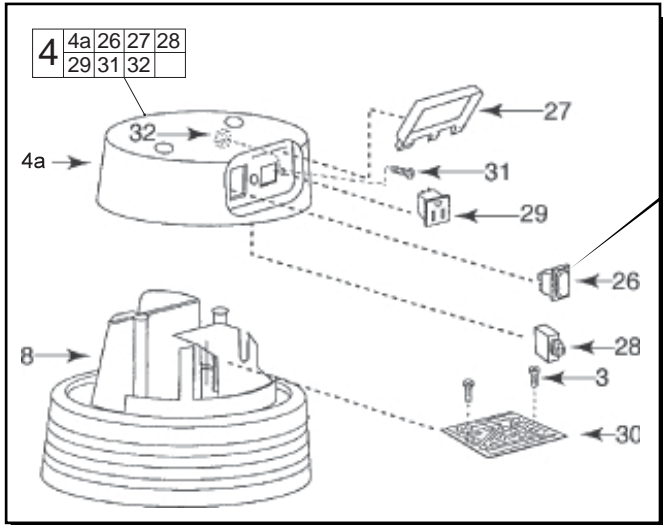


FIG.	PART NO.	DESCRIPTION OF PART	QTY.
1	06-81-5010	1/4 x 3/4 Type AB Screw	2
2	43-62-1185	Handle	1
3	06-81-5390	8 x 1/2 Type AB Screw	3
4	31-15-0531	Motor Housing Cover Service Kit	1
4a	-----	Motor Housing Cover	1
5	22-64-0910	Cord	1
6	44-76-0300	Cord Retainer	1
7	43-84-0880	Cover Insert	1
8	31-50-1460	Motor Housing	1
9	43-76-0630	Inner Form Insert	1
10	43-44-1050	Upper Motor Gasket	1
11	06-95-4000	10-24 x 1/2 Ground Screw	1
12	43-76-0640	Outer Form Insert	1
13	23-30-0340	Motor	1
15	42-46-0100	Ball Float	1
16	43-44-0010	Lower Motor Gasket	1
17	42-68-0690	Lid Latch	3
18	31-15-0540	Lid Cage Assembly	1
19	06-95-4010	10 x 24 Type AB Screw	10
20	49-90-1830	Cartridge Filter	1
21	42-51-0450	Tank Assembly	1
22	49-90-0445	High Efficiency Filter (5) Pack	1
23	42-36-1840	Caster Bracket	2
24	45-94-0420	Caster	4
25	42-51-0255	Tool Basket	1
26	-----	Switch	1
27	42-92-1210	Switch Cover	1
28	22-36-0210	Circuit Breaker	1
29	23-33-0490	Receptacle	1
30	22-09-0760	Circuit Board Assembly	1
31	06-81-8705	10-24 x 1/2 Nylon Screw	1
32	06-55-1050	10-24 Hex Nut	1

Items Not Shown

10-20-8936	French Warning Label	1
10-20-8938	Spanish Warning Label	1
10-20-9000	Auto Label	1
10-20-9010	Receptacle Label	1
10-20-9020	Circuit Breaker Label	1
10-20-9030	Switch Label	1
12-99-8936	Service Nameplate	1
22-18-0195	Carbon Brush Assembly	1
49-90-0155	Hose Adapter	1