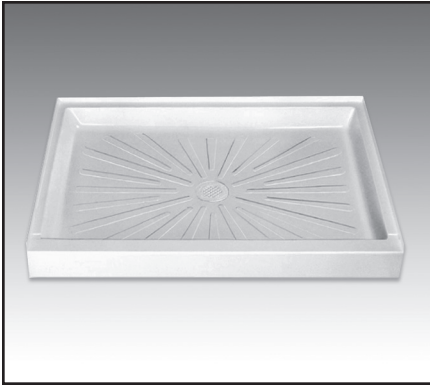




MUSTEE

DURABASE® Fiberglass Shower Floors Rectangular, Single Threshold, 34" Series



Design features:

- Sturdy, 1-piece molded fiberglass construction – structural underbody for strength, slip resistant Starburst® surface
- Integral molded drain with seal for connection to 2" Sch. #40 ABS, PVC or iron DWV sanitary drain pipe. See optional drain seals for 1-1/2" pipe and 2" copper – removable strainer
- Available in White, Biscuit and Bone
- Semi-gloss surface – resistant to mold and mildew, easy to clean
- Designed to be used with Mustee's DURAWALL® shower walls, ceramic tile or preformed wall kit

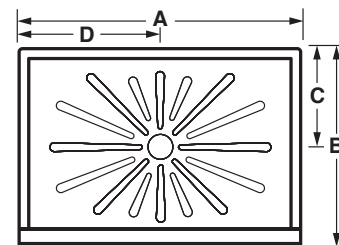
Code Accepted

- International Association of Plumbing and Mechanical Officials® (IAPMO®)
- Warnock Hersey® (Canada) Listed – CSA test standards Shower Floor
- American National Standards Institute (ANSI) – Specification ANSI Z 124-2017
- American Society of Testing and Materials (ASTM) – E-84
- CAN/ULC S102-07 Burn and Smoke Test

Specifications

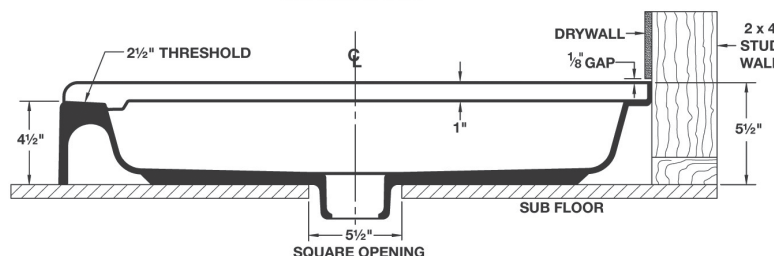
Model	Nom. Size	Color	UPC	A	B	C	D
3442M	34" x 42"	White	6 71031 00105 4	42"	34"	17"	21"
3442BN	34" x 42"	Bone	6 71031 00103 0	42"	34"	17"	21"
3442BT	34" x 42"	Biscuit	6 71031 00369 0	42"	34"	17"	21"
3448M	34" x 48"	White	6 71031 00112 2	48"	34"	17"	24"
3448BN	34" x 48"	Bone	6 71031 00108 5	48"	34"	17"	24"
3448BT	34" x 48"	Biscuit	6 71031 00352 2	48"	34"	17"	24"
3454M	34" x 54"	White	6 71031 00118 4	54"	34"	17"	27"
3460M	34" x 60"	White	6 71031 00123 8	60"	34"	17"	30"
3460BN	34" x 60"	Bone	6 71031 00121 4	60"	34"	17"	30"
3460BT	34" x 60"	Biscuit	6 71031 00376 8	60"	34"	17"	30"

General: Furnish and install as shown on plans. DURABASE® rectangular, single threshold shower floor model _____ as manufactured by E.L. Mustee & Sons, Inc. Floor to be one-piece, molded fiberglass, made with matched metal molds. Surface to be slip-resistant Starburst® design that does not interfere with the flow of water. Size ____" x ____". Shoulder will be no less than 3" high or less than 1" wide. Tiling flange will extend not less than 1" higher than the threshold which provides an integral molded water barrier. Threshold will be not less than 4-1/2" high. Molded-in drain and drain seal for installation of 2" iron DWV (Sch. 40) PVC or ABS sanitary drain pipe. Removable strainer. Shall meet ANSI Z 124-2017. Color: _____ (White, Bone, Biscuit)



THRESHOLD

SECTIONAL VIEW



MUSTEE

E.L. Mustee & Sons, Inc. • 5431 West 164th Street • Brook Park, OH 44142 • Phone: 216.267.3100 • Fax: 216.267.9997
 E-mail: info@mustee.com • Web: www.mustee.com • Proudly made in the USA

Notice: Our continuous commitment to product improvement may result in changes to product specifications without notice.
 Made and Printed in U.S.A.



MUSTEE

DURABASE® Fiberglass Shower Floor Accessories for 34" Series

572T VARISTONE™ — 5 PANEL SQUARE SHOWER WALLS, ADHESIVE-MOUNT



Model No.	Color	UPC	Fits DURABASE®
572TWHT	White	6 71031 00420 8	3442M, 3448M, 3454M, 3460M
572TBN	Bone	6 71031 00421 5	3442BN, 3448BN, 3460BN

748-34 DURAWALL® — PREMIUM FIBERGLASS 3-PANEL RECTANGULAR SHOWER WALLS, DIRECT TO STUDWALL MOUNT



Model No.	Color	UPC	Fits DURABASE®
748-34WHT	White	6 71031 00213 6	3448M
748-34BN	Bone	6 71031 00211 2	3448BN

247 DURAWALL® — DELUXE THERMOPLASTIC 5-PANEL RECTANGULAR SHOWER WALLS, ADHESIVE MOUNT



Model No.	Color	UPC	Fits DURABASE®
247WHT	White	6 71031 00048 4	3442M, 3448M

260 DURAWALL® — DELUXE THERMOPLASTIC 5-PANEL RECTANGULAR SHOWER WALLS, ADHESIVE MOUNT



Model No.	Color	UPC	Fits DURABASE®
260WHT	White	6 71031 00053 8	3442M, 3448M, 3454M, 3460M

265 DURAWALL® — DELUXE THERMOPLASTIC 5-PANEL RECTANGULAR SHOWER WALLS, ADHESIVE MOUNT



Model No.	Color	UPC	Fits DURABASE®
265WHT	White	6 71031 00478 9	3442M, 3448M, 3454M, 3460M



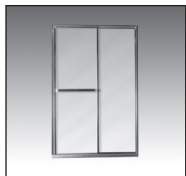
MUSTEE

E.L. Mustee & Sons, Inc. • 5431 West 164th Street • Brook Park, OH 44142 • Phone: 216.267.3100 • Fax: 216.267.9997
 E-mail: info@mustee.com • Web: www.mustee.com • Proudly made in the USA

Notice: Our continuous commitment to product improvement may result in changes to product specifications without notice.
 Patents pending. Made and Printed in U.S.A.



STYLEMATE® — BY-PASS FRAMED AND BY-PASS FRAMELESS ENCLOSURES



Model No.	Finish	Glass	UPC (for enclosure)	Fits DURABASE®
Framed Design				
48.403	Chrome	Clear	6 71031 00466 6	3448M, 3448BN, 3448BT
48.404	Brushed Nickel	Clear	6 71031 00467 3	3448M, 3448BN, 3448BT
60.403	Chrome	Clear	6 71031 00472 7	3460M, 3460BN, 3460BT
60.404	Brushed Nickel	Clear	6 71031 00473 4	3460M, 3460BN, 3460BT
Frameless Design				
48.407	Brushed Nickel	Clear	6 71031 00470 3	3448M, 3448BN, 3448BT
60.406	Chrome	Clear	6 71031 00475 8	3460M, 3460BN, 3460BT
60.407	Brushed Nickel	Clear	6 71031 00476 5	3460M, 3460BN, 3460BT

Mustee's DURABASE® Shower Floors are just the beginning of a beautiful shower space that can be created in virtually any location. The accessory products presented here will help you build the shower of your dreams, starting with Mustee's renown DURABASE® Shower Floors.

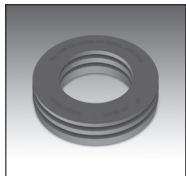
GapSeal-Pro™ — FOR ALL SHOWER FLOORS AND BATHTUBS



Model No.	Description	UPC
60.320A	132" long x 2" tall	6 71031 00496 3

The flexible PVC GapSeal-Pro™ features a strong adhesive strip that allows it to be easily positioned to "extend" tile flange and effectively seal the gap between drywall or like-surfaces on shower floors or bathtubs. Patent pending.

Drain Seals



Model No.	Description	UPC
32.404	Drain Seal for 2" copper pipe	6 71031 00313 3
32.405	Drain Seal for 1-1/2" ABS/PVC pipe	6 71031 00397 3

Designed to effectively seal the connection between DWV piping and the molded-in drain for all DURABASE® shower floors.

Strainers



Model No.	Description	UPC
34.301	Strainer – Stainless steel	6 71031 00532 8
42.322	Strainer – Molded plastic - White	6 71031 00533 5
42.323	Strainer – Molded plastic - Bone	6 71031 00534 2
42.326	Strainer – Molded plastic - Chrome	6 71031 00493 2

Premium grade, removable strainers.

