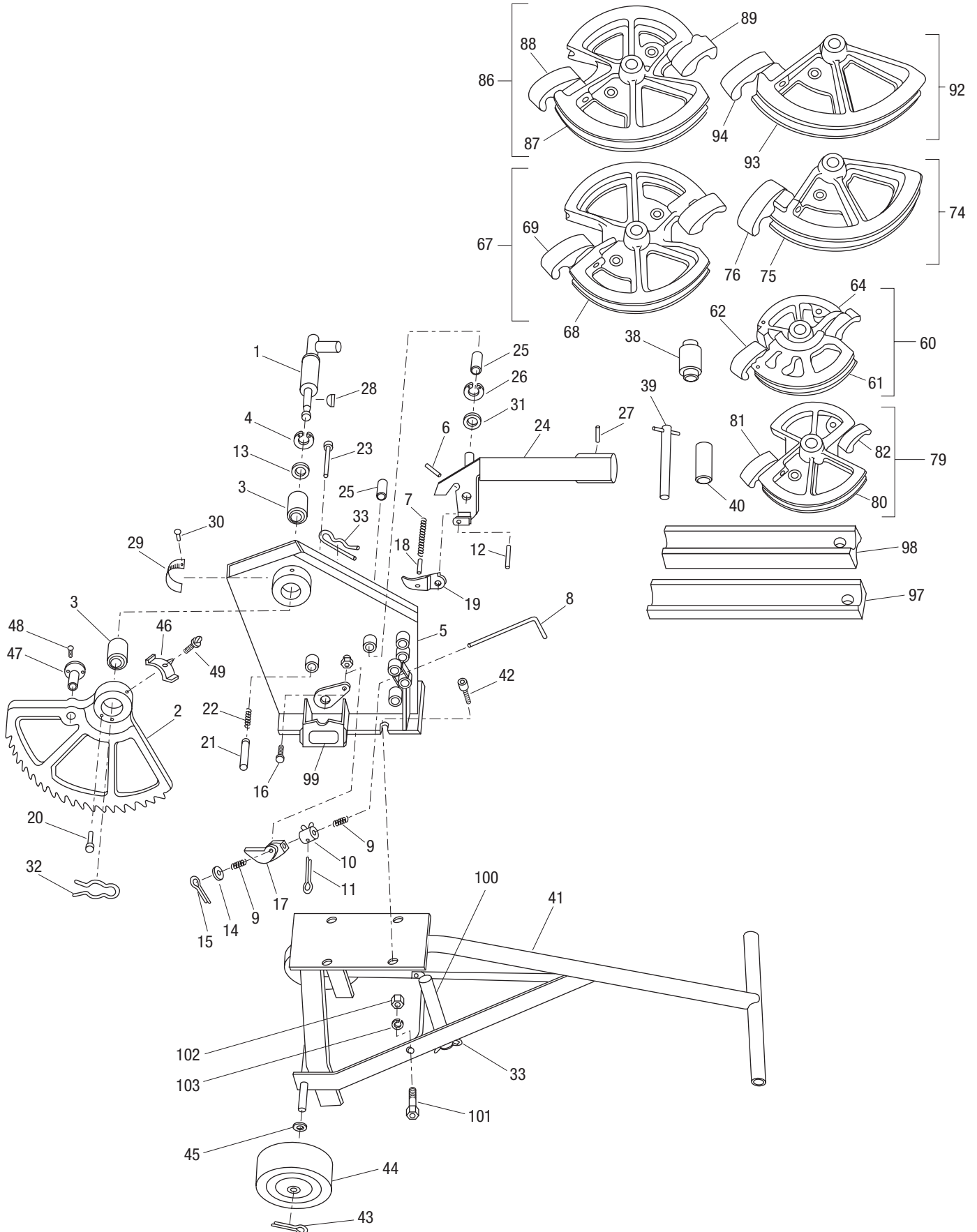


1818 Mechanical Bender—Illustration



1818 Mechanical Bender—Parts List

(Benders with Serial No. YY-0000GK and Up)

Mechanical Bender with attachments for bending 1/2" thru 1-1/2" rigid steel and aluminum conduit, 2" aluminum conduit, 3/4" thru 2" thin wall (EMT) conduit, and 1/2" thru 1-1/4" IMC (includes # 1 thru 84).

When ordering parts, give serial number of unit.

Key	Part No.	Description	Qty	Key	Part No.	Description	Qty
1	50361988	Shaft weldment shoe	1	50		Decal, stub-up.....	1
2	50360949	Segment (includes #46–49).....	1	51		Nut, 3/8-16 hex	1
3	90540131	Bearing, Garlock #40DU40	2	52		ID decal	2
4		Ring, retaining, Truarc #5100-250.....	1	60	50188275	Shoe unit, 1/2, 3/4 and 1" rigid (includes #61–66).....	1
5	50361643	Frame weldment.....	1	61		Shoe, 1/2, 3/4, and 1" rigid	1
6		Pin, roll .187 x 1.62.....	1	62	50188097	Hook, 1" rigid	1
7	90540140	Spring, drive pawl	1	63	50188364	Pin, 1" rigid hook (not shown).....	1
8	50360680	Handle, lock	1	64	50188151	Hook, 3/4" rigid	1
9	90540158	Spring, handle	2	65	90515277	Ring, retaining, Truarc #5160-62 (not shown)	4
10	50360809	Dog, unload lock B.....	1	66	50188356	Pin, 3/4" rigid hook (not shown).....	1
11		Pin, cotter 3/32 x 1.25.....	1	67	50188283	Shoe unit, 1-1/4" and 1-1/2" rigid (includes #68–73).....	1
12		Pin, dowel .500 x 2.00.....	1	68		Shoe, 1-1/4" and 1-1/2" rigid.....	1
13	50362054	Washer, thrust 2.50 x 3.25 x .050.....	1	69	50188119	Hook, 1-1/2" rigid.....	1
14		Washer, flat .390 x .625 x .062	1	70	50188380	Pin, 1-1/2" rigid hook (not shown).....	1
15		Pin, cotter .093 x .750	1	71	50188135	Hook, 1-1/4" rigid.....	4
16		Screw, shoulder .50 x 2.50.....	1	72	90515285	Ring, retaining, Truarc #5160-75-S-PP (not shown).....	1
17	50360760	Pawl, lock C	1	73	50188372	Pin, 1-1/4" rigid hook (not shown).....	1
18	50360868	Pin, spring	1	74	50188291	Shoe unit, 2" rigid aluminum conduit	1
19	50360787	Pawl, drive C	1			(includes #75–78, optional)	1
20		Screw, cap 5/16-18 x 1-1/4 socket head.....	1	75		Shoe, 2" rigid aluminum conduit (optional)	1
21	50360906	Pin, friction	1	76	50188070	Hook, 2" rigid (optional).....	1
22	90540166	Spring, friction pin.....	1	77	50188380	Pin, 2" rigid hook (not shown–optional)	4
23		Screw, cap 1/4-20 x 3-1/2 hex head.....	1	78	90515285	Ring, retaining, Truarc #5160-75-S-PP (not shown).....	1
24	50361651	Arm weldment, ratchet.....	1	79	50188305	Shoe unit, 3/4 and 1" EMT (includes #80–85)....	1
25	90540204	Bearing, Garlock #16DU16	2	80		Shoe, 3/4 and 1" EMT	1
26	90513010	Ring, retaining, Truarc #5160-98	1	81	50188240	Hook, 1" EMT	1
27		Screw, set 3/8-24 x .250 UNF.....	1	82	50188267	Hook, 3/4" EMT.....	1
28	90515900	Key, #15 Woodruff.....	1	83	50188402	Pin, 1" EMT hook (not shown).....	1
29	50362046	Dial indicator	1	84	50188399	Pin, 3/4" EMT hook (not shown).....	1
30	90506707	Drive screw, #2 .08 x .25	2	85	90515277	Ring, retaining, Truarc #5160-62 (not shown)	4
31		Washer, thrust 1.00 x 1.56 x .050.....	1	86	50188313	Shoe unit, 1-1/4 and 1-1/2" EMT (includes #87–91).....	1
32	50187724	Clip, retaining	2	87		Shoe, 1-1/4 and 1-1/2" EMT	1
33		Clip, #8 hitch pin	2	88	50188208	Hook, 1-1/2" EMT	1
34		Decal, caution handle.....	1	89	50188224	Hook, 1-1/4" EMT	1
35		Decal, instruction	1	90	50188410	Pin, 1-1/4 and 1-1/2" EMT hook (not shown).....	2
36		Decal, bending instructions.....	1	91	90515293	Ring, retaining, Truarc #5160-87 (not shown)	4
37		Decal, bending, unload	1	92	50188321	Shoe unit, 2" EMT (includes #93–96)	1
38	50186817	Roller unit	1	94	50188186	Hook, 2" EMT	1
39	50366971	Pin unit–roller.....	1	95	50188429	Pin, 2" EMT hook (not shown).....	1
40	50362968	Roller–follow bar.....	1	96	90515293	Ring, retaining, Truarc #5160-87 (not shown)	4
41	50084291	Carriage unit (includes #43–45).....	1	97	50186361	Bar, 2" EMT follow.....	1
42		Screw, cap 1/2-13 x .75 socket head	4	98	50186426	Bar, 1-1/4 and 1-1/2" EMT follow.....	1
43	90506545	Pin, cotter 1/8 x 1	2	99		Decal	1
44	90553276	Wheel, 8" O.D.....	2	100		Shoe storage	1
	90515099	Wheel, 8" O.D. (benders with serial numbers preceding YY8000)	2	101		Screw, 3/8-16 x 1 hex head cap	2
45	90517407	Washer, flat.....	2	102		Nut, 3/8-16 jam hex.....	2
46	50362011	Pointer, adjustable.....	1	103		Lock washer, 3/8	2
47	50360914	Pin, drive	1				
48		Screw, machine #10-32 x 1/2 flat head.....	2				
49		Screw, thumb 1/4-20 x 1/2 Type S.....	1				