

# WILKINS

## 950/ 950 A/ 950 XL/ 950XL2

## 950 XLT/ 950XLT2

### SIZE

3/4", 1", 1 1/4", 1 1/2", 2", 2 1/2", 3", 4", 6", 8", 10"

### DESCRIPTION

This is a double check assembly. Production began in 1990. The 2 1/2"-10" sizes were discontinued in 2004. The 3/4"-2" size is a wye pattern glass filled noryl poppet style wye pattern check. The body is made of bronze. In 2010 the 950XL2 was introduced and made of lead free bronze. The rubber kit fits both versions. The check springs are not contained when the screw on cover cap is removed. There were three versions of check seats produced. The 950 version has a non-replaceable check seat. The model 950A had a replaceable bronze seat. The model 950 XL had a replaceable seat made of glass filled noryl. A seat removal tool was needed to change the seats. The check discs in the 950 XL were changed to silicon rubber. In 1997 a top entry model was created and called model 950 XLT. Another model, the 950 XLV, was created with union ends and 90 degree elbows on each end. The 2 1/2"-10" utilizes a fusion epoxy coated cast iron body. The check seats are replaceable and the spring is contained when the bolted cover is removed. The internal hardware parts are mostly bronze.

### BASIC REPAIR KIT

Repair kit contains all rubber discs and O-rings

<u>SIZE</u>	<u>KIT NO 950 &amp; 950A</u>	<u>950XL &amp; 950 XL2</u>
3/4"-1"	RK34-950R	RK34-950XLR
1 1/4"-2"	RK114-950R	RK114-950XLR
2 1/2"-3"	RK212-950	
4"	RK4-950	
6"	RK6-950	
8"	RK8-950	
10"	RK10-950	

### IMPORTANT FEATURES

#### 3/4"-2" SIZE

~Bronze body  
 ~Springs are not contained  
 ~Replaceable seat option available  
 ~Factory repair information enclosed

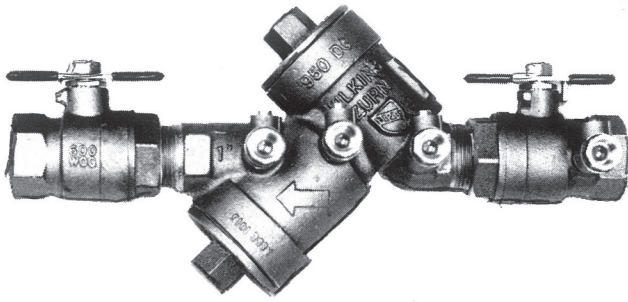
#### 2 1/2"-10" SIZE

~Fused epoxy coated cast iron body  
 ~Springs are contained  
 ~Seats are replaceable  
 ~Factory repair information enclosed



# Model 950XL Double Check Valve Assembly

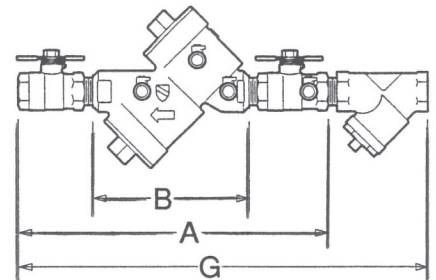
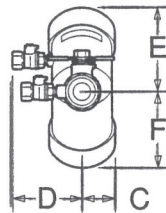
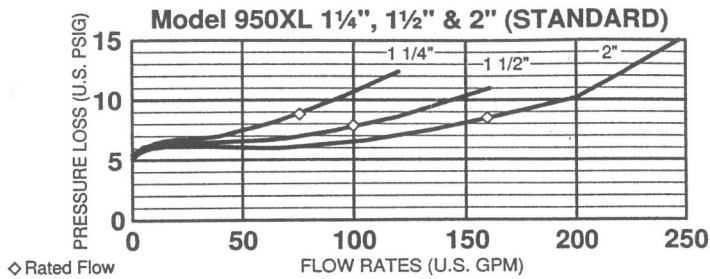
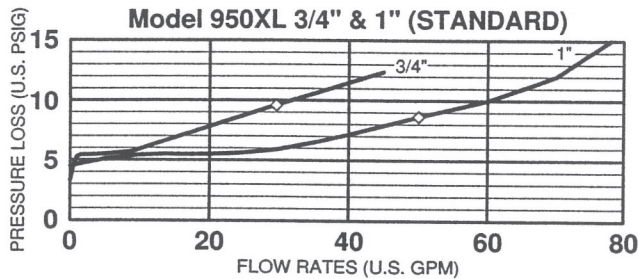
Sizes:  $\square \frac{3}{4}"$   $\square 1"$   $\square 1\frac{1}{4}"$   $\square 1\frac{1}{2}"$   $\square 2"$



## MATERIALS

Main valve body — Cast Bronze ASTM B584  
Access covers — Cast Bronze ASTM B584  
Internals — Stainless Steel, 300 Series  
Elastomers — Silicone (FDA approved)  
Buna Nitrile (FDA approved)  
Polymers — Noryl™, NSF Listed  
Springs — Stainless steel, 300 series

Maximum working water pressure — 175 PSI  
Maximum working water temperature — 180°F  
Hydrostatic test pressure — 350 PSI  
End connections — Threaded ANSI B1.20.1



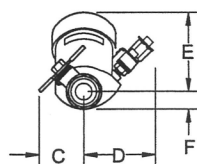
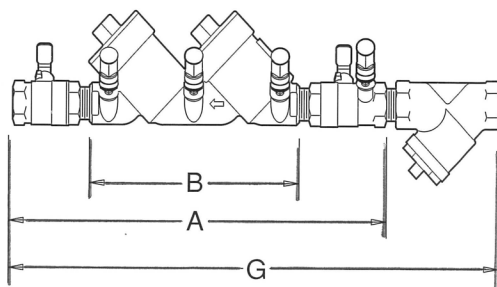
## DIMENSIONS & WEIGHTS

MODEL SIZE		DIMENSIONS (approximate)																WEIGHT			
		A		A UNION BALL		B LESS BALL		C		D		E		F		G		LESS BALL		WITH BALL	
		in.	mm	in.	mm	in.	mm	in.	mm	in.	mm	in.	mm	in.	mm	in.	mm	lbs.	kg	lbs.	kg
3/4	20	11 1/4	286	12 1/2	318	7	178	1 1/2	38	3	76	3 1/2	89	3	76	15	381	5	2.3	7	3.2
1	25	12 1/4	311	13 7/8	353	7	178	1 1/2	38	3	76	3 1/2	89	3	76	17 3/4	451	8	3.6	12	5.4
1 1/4	32	15 1/2	419	18 1/2	470	10 9/16	268	2	51	3 1/2	89	4 1/2	114	4 1/2	114	21 1/2	546	16	7.3	22	10
1 1/2	40	17 1/8	435	19 1/8	486	10 9/16	268	2	51	3 1/2	89	4 1/2	114	4 1/2	114	22 3/4	578	16	7.3	22	10
2	50	18 1/4	460	20	508	10 9/16	268	2	51	3 1/2	89	4 1/2	114	4 1/2	114	25 1/8	638	16	7.3	28	12.7

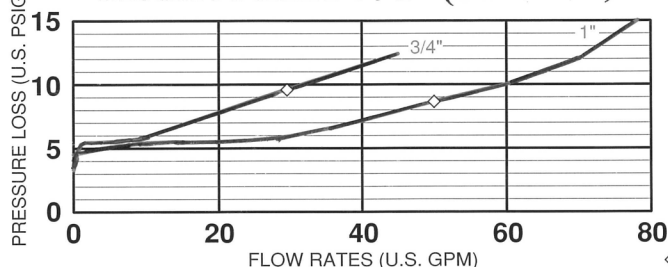
# MODEL 950XLT

**DIMENSIONS & WEIGHTS (do not include pkg.)**

MODEL SIZE	DIMENSIONS (approximate)																WEIGHT				
	A		A UNION BALL		B LESS BALL		C		D		E		F		G		LESS BALL		WITH BALL		
	in.	mm	in.	mm	in.	mm	in.	mm	in.	mm	in.	mm	in.	mm	in.	mm	lbs.	kg	lbs.	kg	
3/4	20	13	330	14 5/16	364	8 3/4	222	2 3/8	60	2 5/16	59	3 5/16	84	3/4	19	17 5/8	448	4	1.8	6	2.7
1	25	14	356	15 3/4	400	8 3/4	222	2 1/2	64	2 5/16	59	3 5/16	84	3/4	19	19 3/4	502	8	3.6	12	5.4
1 1/4	32	19 5/8	499	21 5/8	549	13 3/4	349	4	102	3 5/8	92	4 3/8	111	1 5/16	33	24 3/4	629	16	7.3	22	10
1 1/2	40	20 5/16	516	22 5/16	567	13 3/4	349	5 3/8	137	3 5/8	92	4 3/8	111	1 5/16	33	25 15/16	659	16	7.3	22	10
2	50	21 3/8	543	23 1/4	591	13 3/4	349	5 13/16	148	3 5/8	92	4 3/8	111	1 5/16	33	28 5/16	719	17	7.7	29	13.2

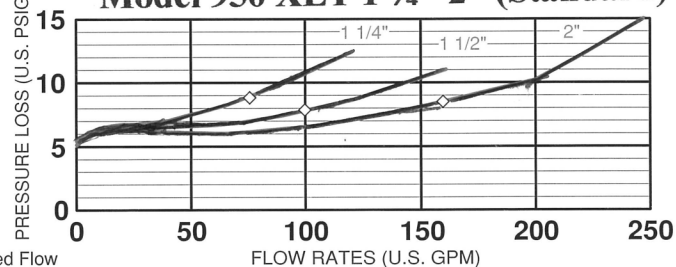


**Model 950XLT 3/4-1" (Standard)**

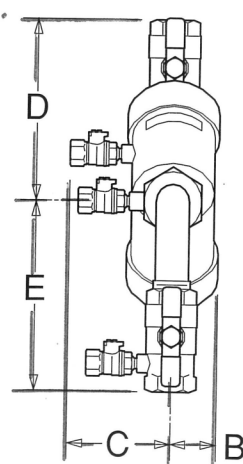
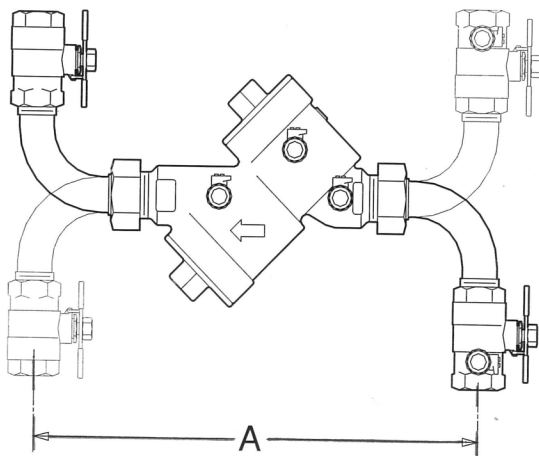


◇ Rated Flow  
(Established by approval agencies)

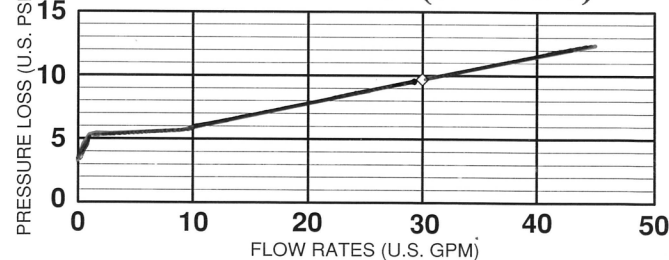
**Model 950 XLT 1 1/4 - 2" (Standard)**



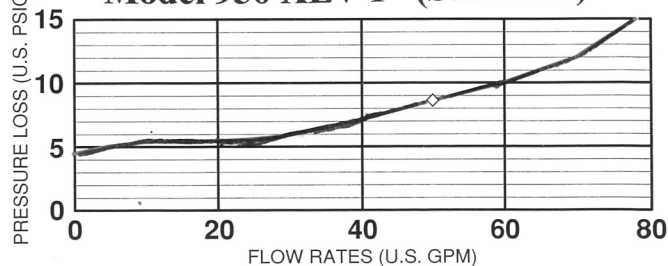
# MODEL 950XLV



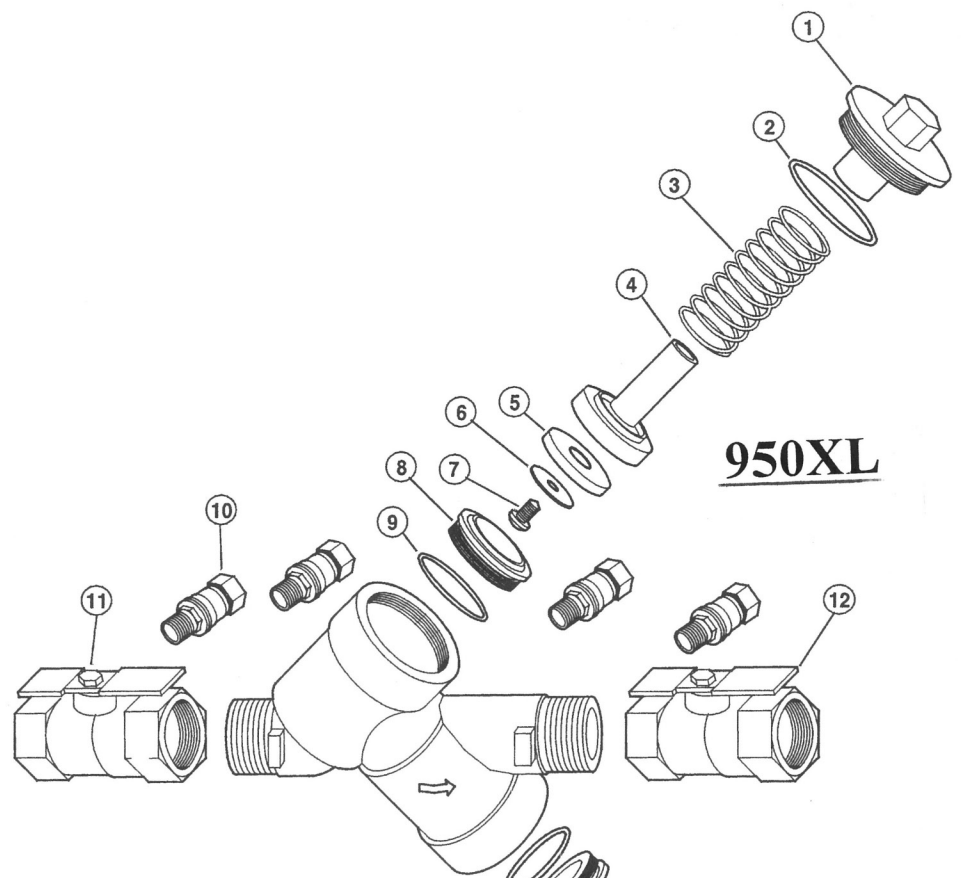
**Model 950 XLV 3/4" (Standard)**



**Model 950 XLV 1" (Standard)**

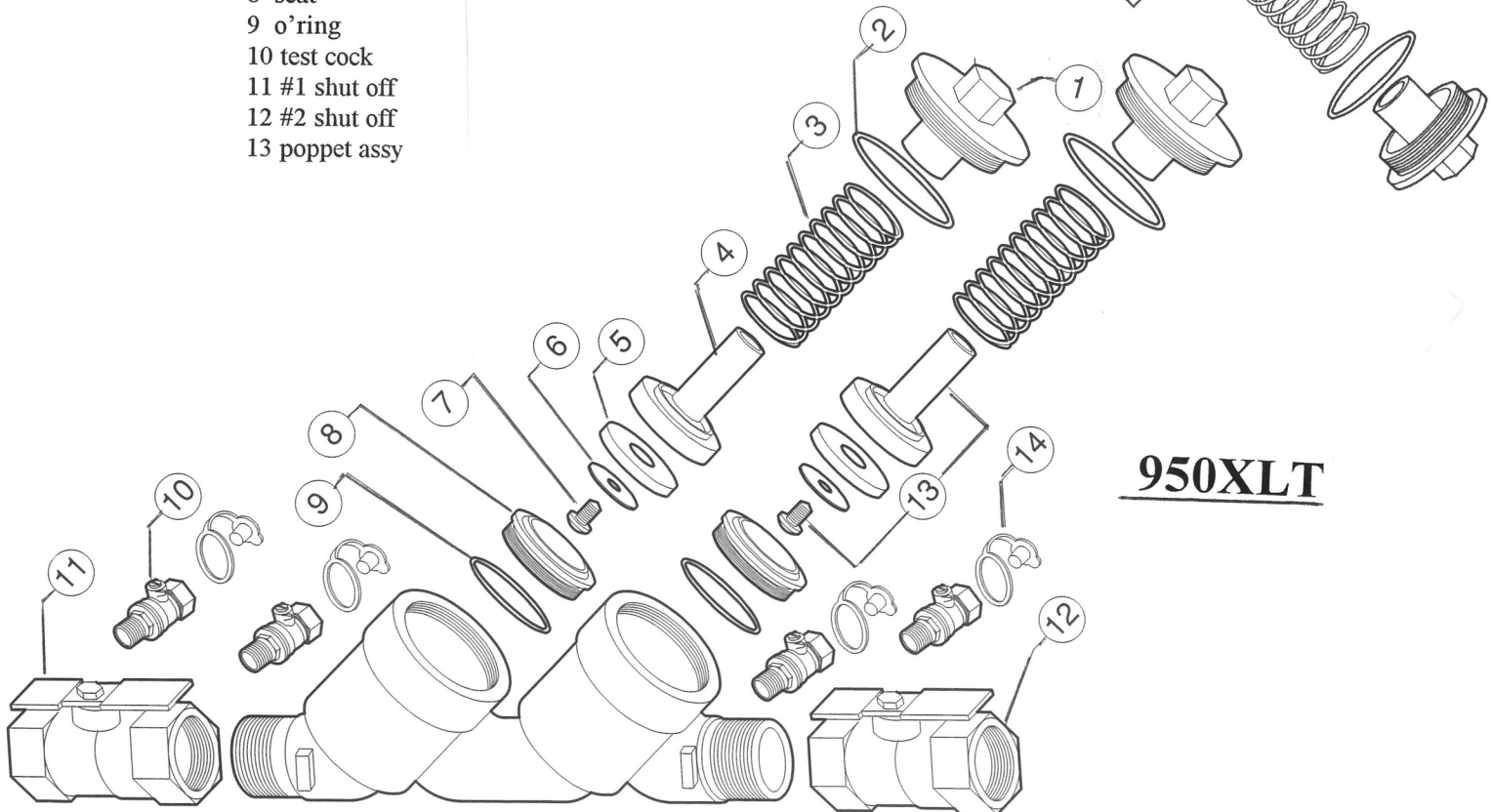


MODEL SIZE	DIMENSIONS (INCHES)					WEIGHT (LBS)
	A	B	C	D	E	
3/4"	11.50	2.10	3.00	4.75	5.00	11.00
1"	11.50	2.10	3.00	5.00	5.25	12.00



**950XL**

- 1 cover
- 2 o'ring
- 3 spring
- 4 disc holder
- 5 disc
- 6 disc retainer
- 7 disc ret screw
- 8 seat
- 9 o'ring
- 10 test cock
- 11 #1 shut off
- 12 #2 shut off
- 13 poppet assy



**950XLT**



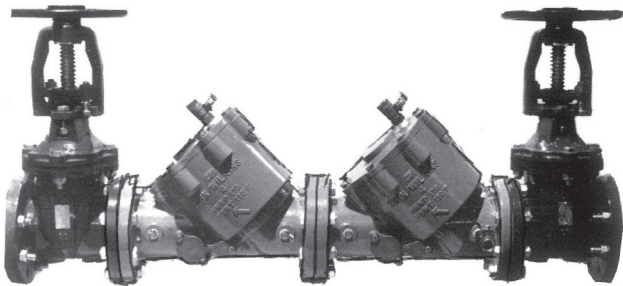
# MODEL 950

Double Check Valve Assembly  
Backflow Preventers  
Sizes 2 1/2" to 10"

# WILKINS



a step ahead of tomorrow



• Shown with optional OS&Y Gate Valves

## MATERIALS

Main valve body — Cast Iron ASTM A126 Class B  
Access covers — Cast Iron ASTM A126 Class B  
Coatings — FDA Approved Epoxy finish  
Internals — Stainless Steel, 300 Series  
Cast Bronze ASTM B584  
Elastomers — EPDM (FDA approved)  
Buna Nitrile (FDA approved)  
Polymers — Delrin™, NSF Listed  
Springs — Stainless steel, 300 series

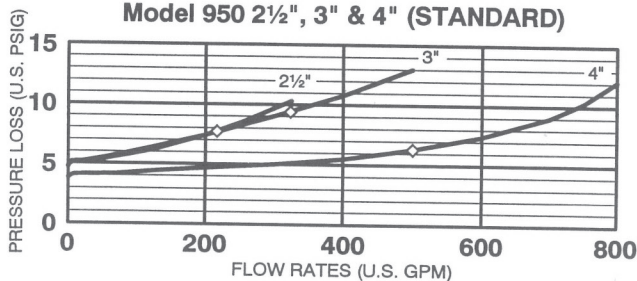
## FEATURES

Sizes: □ 2 1/2" □ 3" □ 4" □ 6" □ 8" □ 10"

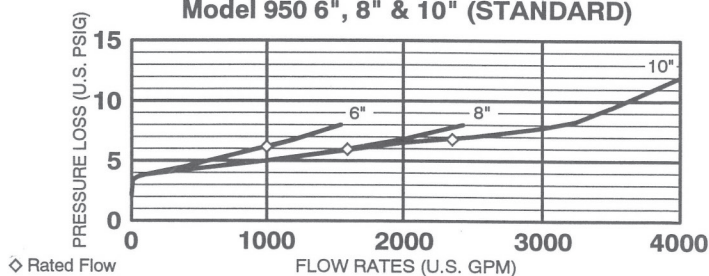
Maximum working water pressure — 175 PSI  
Maximum working water temperature — 140°F  
Hydrostatic test pressure — 350 PSI  
End connections — Flanged ANSI  
B16.1 Class 125

## FLOW CHARACTERISTICS

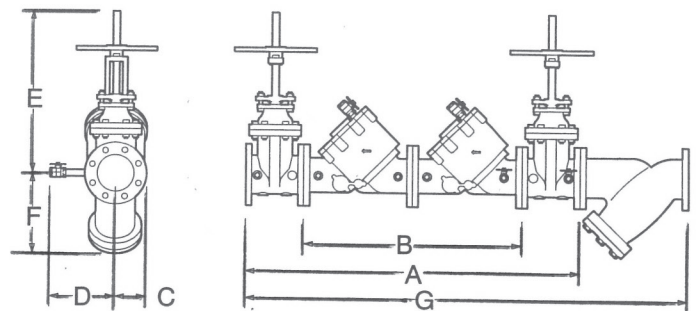
Model 950 2 1/2", 3" & 4" (STANDARD)



Model 950 6", 8" & 10" (STANDARD)



## DIMENSIONS & WEIGHTS



SIZE	DIMENSIONS (inches)									WEIGHT (lbs.)		
	A	B WITHOUT GATE VALVES	C	D	OS&Y <sup>E</sup> GATE VALVE OPEN	OS&Y <sup>E</sup> GATE VALVE CLOSED	NRS <sup>E</sup> GATE VALVE	F	G	WITHOUT GATE VALVES	WITH NRS <sup>E</sup> GATE VALVES	WITH OS&Y <sup>E</sup> GATE VALVES
2 1/2"	37.12	22.00	4.00	8.00	16.00	14.00	13.00	8.38	47.10	153	261	253
3"	38.12	22.00	4.00	8.00	20.00	16.00	13.00	9.25	48.75	153	277	263
4"	50.28	32.12	5.00	8.00	23.00	19.00	15.00	12.50	65.25	371	537	541
6"	62.00	41.00	6.00	10.00	31.00	25.00	19.00	14.00	80.12	604	866	882
8"	71.12	48.00	7.50	11.00	39.00	30.00	24.00	17.75	95.37	1159	1569	1587
10"	84.12	58.00	9.00	12.00	46.00	36.00	27.00	21.25	113.80	1487	2199	2179

# 950 2 1/2-10"

ITEM NO.	DESCRIPTION
1	GATE VALVE, NRS
	GATE VALVE, OS&Y
2	BOLT, FLANGE
3	NUT, FLANGE
4	GASKET, FLANGE
5	STUD, FLANGE
6	O-RING, SMALL
7	O-RING, LARGE
8	COVER PLATE
9	BOLT, COVER PLATE
10	COVER
11	O-RING, COVER
12	BOLT, COVER
13	NIPPLE, SHORT
14	BALL VALVE, MALE
	BALL VALVE, FEMALE
15	O-RING, SEAT
16	SEAT
17	BOLT, SEAT
18	LOWER STEM GUIDE
19	NUT, STEM
20	RETAINING PLATE
21	SEAL RING
22	POPPET ASSEMBLY
23	UPPER STEM GUIDE
24	NIPPLE, LONG
25	PLUG
26	LIFTING LUG

