

STEP BY STEP ILLUSTRATED INSTRUCTIONS

Leave this instruction sheet with installed faucet and write purchased model number here for future reference!

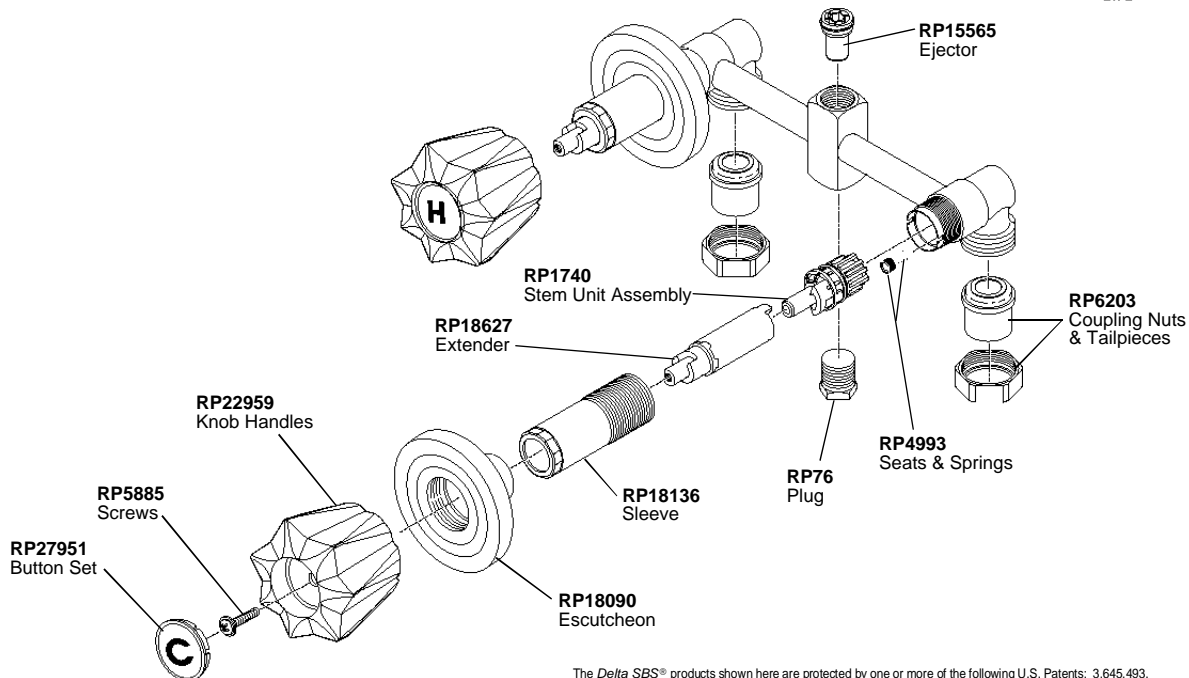


READ COMPLETE INSTRUCTIONS BEFORE INSTALLING
YOUR TWO HANDLE WASHERLESS TUB/SHOWER VALVE



LISTED
UL Listed to US and Canadian
Safety Standards
21PL

MODEL 85210-SBS

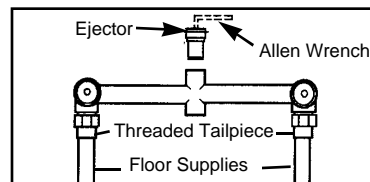


The Delta SBS® products shown here are protected by one or more of the following U.S. Patents: 3,645,493, 3,786,995 4,523,604, 4,562,960, 4,593,430, 4,218,785, 4,577,653, 4,765,365. More patents are pending.

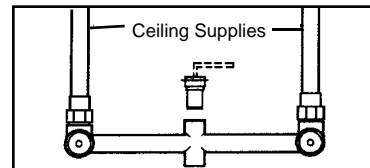
HOW TO CHANGE THE EJECTOR ON TUB & SHOWER MODELS ONLY IF SUPPLIES COME FROM CEILING

IMPORTANT: These instructions are for installations where hot and cold water supplies come up from floor. If you are installing tub and shower combination with supplies coming down from ceiling you **must** change the ejector in the valve as shown at right. For tub or shower only there is no ejector so no change is necessary.

1. The rigid valve is furnished with the ejector in the shower riser outlet for floor supply installation. Unscrew ejector using a 1/4" Allen wrench.



2. Turn rigid valve up so threaded tailpieces point toward ceiling supplies and screw ejector down into what is now shower riser outlet. Now follow normal installation steps as illustrated.



Limited Warranty

All parts of this Delta SBS® product are warranted to the original consumer purchaser to be free from defects in material and workmanship for a period of five (5) years from date of purchase as shown on purchaser's receipt.

MASCO PLUMBING PRODUCTS DIVISION will replace, FREE OF CHARGE, during the warranty period, any part which proves defective in material and/or workmanship under normal installation, use, and service. Replacement parts can be obtained from your dealer or by returning the part to our factory. TRANSPORTATION CHARGES PREPAID, at the address listed on back. THIS WARRANTY IS THE EXCLUSIVE WARRANTY GRANTED BY MASCO PLUMBING PRODUCTS DIVISION AND IS IN LIEU OF ALL OTHER WARRANTIES INCLUDING THE IMPLIED WARRANTIES OF MERCHANTABILITY AND FITNESS FOR A PARTICULAR PURPOSE AND IS FURTHER LIMITED TO DEFECTIVE PARTS REPLACEMENT ONLY. LABOR CHARGES AND/OR DAMAGE INCURRED IN INSTALLATION, REPAIR, OR REPLACEMENT AS WELL AS INCIDENTAL AND CONSEQUENTIAL DAMAGES CONNECTED THEREWITH ARE EXCLUDED AND WILL NOT BE PAID BY MASCO PLUMBING PRODUCTS DIVISION.

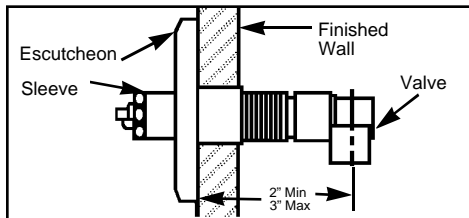
Some states do not allow the exclusion or limitation of incidental or consequential damages, so the above limitation or exclusion may not apply to you. Any damage to this faucet as a result of misuse, abuse, neglect, accident, improper installation, any use violative of instructions furnished by us, or any use of replacement parts other than genuine Delta parts WILL VOID THE WARRANTY.

INSTALLATION STEPS

IMPORTANT: USE TEFLON® TAPE ON ALL THREADED CONNECTIONS

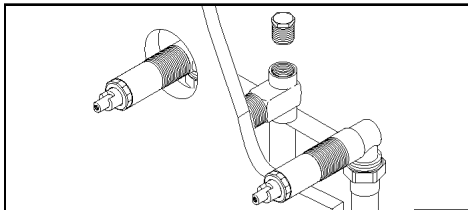
STEP 1.

Install rigid valve so finished wall is a minimum of 2" and a maximum of 3" from center of valve. Tailpieces on valve are threaded for 1/2" threaded pipe and will accept 1/2" sweat copper tubing.



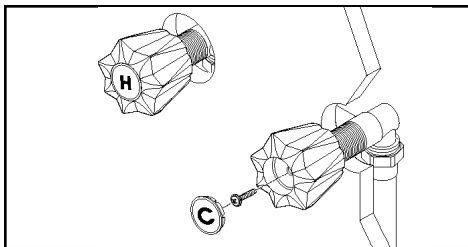
STEP 2.

If you are making tub installation only, plug top outlet of valve. If you are making shower installation only, plug bottom outlet of valve.



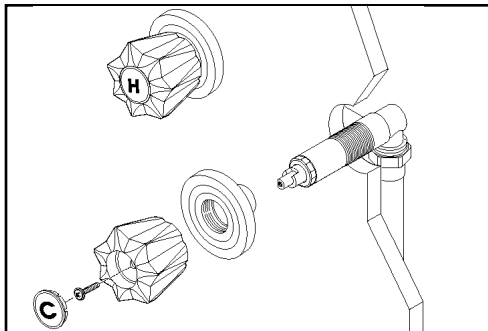
STEP 3.

IMPORTANT: After connections have been made (remove shower-head on shower only models), place handles on valve stems and turn handles to the full on position. Turn on water supplies, check for leaks and let lines flush for one minute without moving valve handles. This will remove debris from lines which can damage internal parts of valve and create leaks. After flushing shut off water at valve.



STEP 4.

Remove handles and screw escutcheons onto sleeves until flush against finished wall. Screw on handles and attach showerhead to shower arm if required.



CLEANING AND CARE

Your new *Delta SBS*® faucet is designed and engineered in accordance with the highest quality and performance standards. With proper care, it will give you years of trouble-free service. Care should be given to the cleaning of this product. Although its finish is extremely durable, it can be damaged by harsh abrasives or polish. To clean, simply wipe gently with a damp cloth and blot dry with a soft towel.

WARNING: DOW BATHROOM CLEANER WITH SCRUBBING BUBBLES AND LYSOL FOAMING BASIN TUB AND TILE CLEANER MUST NOT BE USED ON THE CLEAR KNOB HANDLES AND LEVERS. USE OF THESE CLEANERS CAN RESULT IN CRACKED OR SEVERELY DAMAGED HANDLES. IF OVERSPRAY GETS ONTO THE HANDLES, IMMEDIATELY WIPE THEM DRY WITH A SOFT COTTON CLOTH.

ROUTINE MAINTENANCE

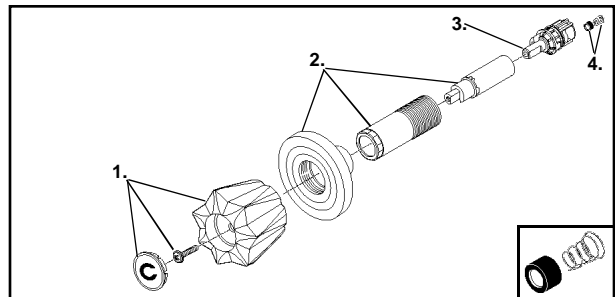
IMPORTANT: AFTER ANY MAINTENANCE BE SURE TO FLUSH BOTH HOT AND COLD LINES FOR ONE MINUTE EACH.

Your *Delta SBS*® washerless faucet will give you years of trouble-free performance. When maintenance is eventually called for it's a quick clean job with one of the inexpensive *Delta*® repair kits available where you bought your faucet. The replacement parts in these kits will restore your faucet to the same condition as the day you bought it.

The *Delta SBS*® 5 year limited warranty on valve mechanism and chrome plated parts is made possible by superior design, quality parts and careful workmanship in manufacturing. Should you ever need replacement parts that are not included in the regular parts kits that are available where you purchased your faucet, simply write to: MASCO PLUMBING PRODUCTS DIVISION Customer Service, 55 E. 111th Street, Indianapolis Indiana 46280.

IF FAUCET EXHIBITS WATER FLOW REDUCTION—Clean springs and flush water lines (REFER TO ILLUSTRATION BELOW).

1. **SHUT OFF WATER SUPPLIES.** Remove handles.
2. Unscrew escutcheons and sleeves then remove extenders.
3. Pull stem units straight out*.
4. Remove any debris trapped in springs.
5. Flush water lines by opening water supplies SLIGHTLY!
IMPORTANT: USE EXTREME CAUTION TO PREVENT WATER SPRAY!
6. Shut off water and reassemble faucet in reverse order.
NOTE: Refer to insert for proper seat and spring installation.



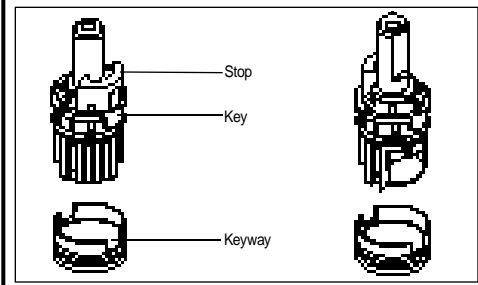
IF FAUCET LEAKS FROM TUB SPOUT/SOWERHEAD—Replace seats and springs Repair Kit RP4993.

1. **SHUT OFF WATER SUPPLIES.** Remove handles.
2. Unscrew escutcheons and sleeves then remove extenders.
3. Pull stem units straight out*.
4. Remove and replace seats and springs. **NOTE:** Refer to insert for proper seat and spring installation.
5. Reassemble faucet in reverse order.

IF LEAK PERSISTS—Replace stem unit assembly RP1740.

***IMPORTANT: STEM UNITS MUST BE REPLACED CORRECTLY FOR PROPER HANDLE ROTATION.**

KNOB HANDLE STEM POSITION. Slip stem unit into body aligning key with keyway so "stop" on both stems point to center of faucet.



Inquiries:

55 E. 111th Street
P.O. Box 40980
Indianapolis, Indiana 46280
317/848-1812

