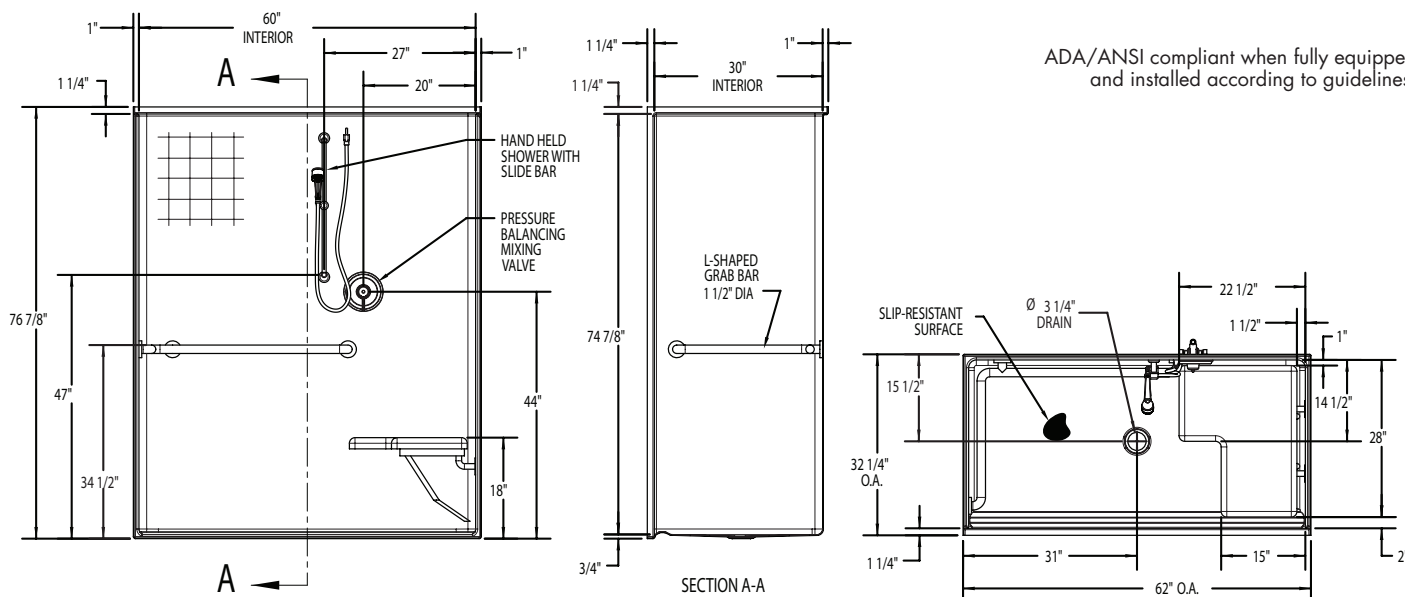


1623BFSTD

Interior: 60 x 30 x 74 7/8 (1525 x 760 x 1900)
 Exterior: 62 x 32 1/4 x 76 7/8 (1575 x 820 x 1955)
 inches (mm)



ADA/ANSI compliant when fully equipped and installed according to guidelines.



FEATURES lbs (kg) Dimensional Tolerance ± 3/8". Dimensions needed for site preparation should be measured from the unit. Aquatic assumes no responsibility for preparatory work.

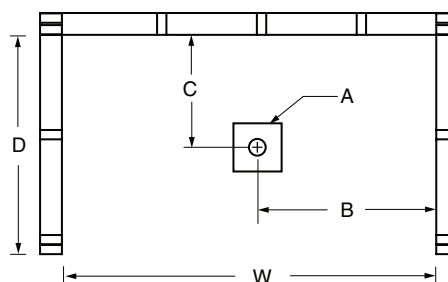
Type and Model #	Material	Wall Finish	Pieces	Drain	Dam/Skirt Height	Net Wt.	Pkg. Wt.
Shower #1623BFSTD	Gelcoat	Smooth tile	1	Center	3/4" (20mm) skirt, 1/2" (15mm) threshold	180 (80)	190 (85)

DIMENSIONS

Specifications	inches (mm)
Width: Overall / Net	62 (1575) / 60 (1525)
Depth: Overall / Net	32 1/4 (820) / 30 (760)
Height: Overall / Net	76 7/8 (1955) / 74 7/8 (1900)
Enclosure Opening:	60 (1525)
Skirt Height:	3/4 (20)
Drain Rough-In (from Back Wall)	15 1/2 (395)
Drain Rough-In (from Side Wall)	31 (785)

FRAMING DIMENSIONS inches (mm)

Type	D Depth	W Width	H Height	A	B	C
Alcove	32 1/4 (820)	62 1/8 (1580)	-	Box Out	31 (785)	15 1/2 (395)



1623BFSTD – ACCESSIBLE SHOWERS

inches (mm)

Interior: 60 x 30 x 74 7/8 (1525 x 760 x 1900)

Exterior: 62 x 32 1/4 x 76 7/8 (1575 x 820 x 1955)

Fax on Demand #6054

The 1623BFSTD roll-in shower features innovative installation design, including an engineered leveled base and improved front threshold. A true time and money saver, our pre-leveled base lets you install directly on a **level** floor. And its front threshold is engineered to keep a constant level without the use of brackets during installation.



AQUATIC ADVANTAGE

- National distribution
- 5 manufacturing facilities
- Private fleet
- Centralized customer service
- Field support
- 24-hour fax-on-demand

COLOR & TRIM OPTIONS

Stock	Premium
Almond	Black
Biscuit	Mexican Sand
Bone	Sandbar
Linen	
Sterling Silver	
White	

**Additional custom colors available.
(Contact Customer Service)

FEATURES

- Pre-leveled base
- Gelcoat surface
- 3/4 (20) skirt
- 1/2 (15) threshold
- Barrier free when properly installed
- Smooth tile
- Center drain
- 3-year limited warranty

OPTIONS

- Grab bars
- Fold-up seat
- Hand-held shower assembly with slide bar
- Pressure balancing mixing valve
- Soap dish
- Curtain rod and/or shower curtain

CODE COMPLIANCE

- ADA
- FHA
- ICC/ANSI A117.1
- ANSI Z124.1.2
- HUD UM73a
- CAN/CSA-B651-04
- CAN/CSA-B45-02

**Code compliant when fully equipped and installed according to guidelines.



Aquatic products may be
specified as Lasco Bathware.

