

*This Space for Architect/Engineer Approval*

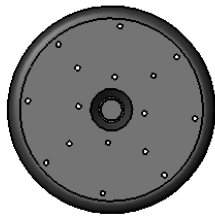
Job Name \_\_\_\_\_ Date \_\_\_\_\_

Model Specified \_\_\_\_\_ Quantity \_\_\_\_\_

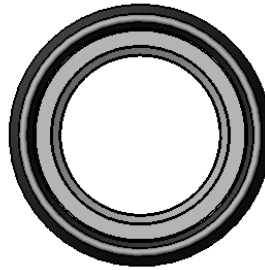
Customer/Wholesaler \_\_\_\_\_

Contractor \_\_\_\_\_

Architect/Engineer \_\_\_\_\_



Black High Flow  
Spray Face



Black Tapered  
Rubber Bumper



Screw

Model Number

**5SV-H-RK**

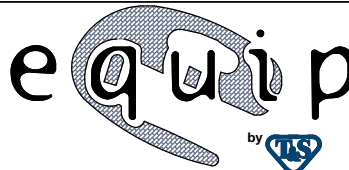
Product Specifications:

Repair Kit for equip Spray Valve (Rubber Bumper, Spray  
Face & Screw)

Product Compliance:

NSF 61 - Section 9  
NSF 372 (Low Lead Content)

equip  
Foodservice  
Accessories



2 Saddleback Cove, P.O. Box 1088  
Travelers Rest, South Carolina 29690  
Phone: 800.891.4808 Fax: 800.868.0084  
equip.tsbrass.com

Drawn: JBC

Checked: JRM

Approved: JHB

Date: 11/21/16

Scale: 1:2

Sheet: 1 of 1