

INSTALLATION

Installing a WASHLET is much like changing your toilet seat, but the features and benefits far exceed any toilet you've ever owned.

EASY ASSEMBLY WITH 3D INSTRUCTIONS



Instructions for this product can be found in BILT®. **Download or Scan**



Available on most iOS and Android Devices



[Discover](#) ▼

[WASHLET](#) ▼

[Where to Buy](#)
[Choose Language](#)

Before you start you'll need:

A Wrench

A Phillips-Head
Screwdriver

A Ground Fault
120 volt outlet

A Flat Head
Screwdriver

To turn off your
water supply th
flush your toilet

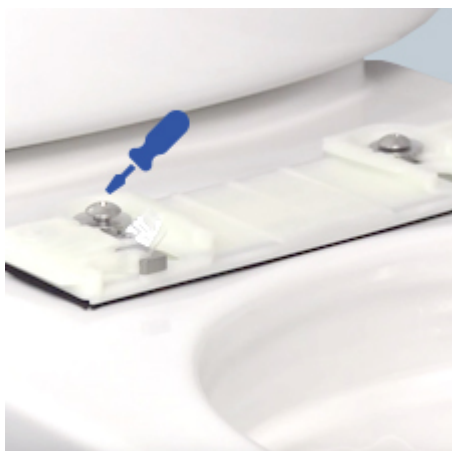


5 EASY STEPS:



1. Remove the old toilet seat.

Make sure to clean the surface around the mounting holes.



2. Install the WASHLET seat mounting bracket.

Using a Phillips-head screwdriver, tighten the screws just snug enough to allow movement so you can adjust it to align the seat.



[Discover](#) v[WASHLET](#) v[Where to Buy](#)[Choose Language](#)

WASHLET ON THE bracket.

Make sure you slide the WASHLET seat back into the bracket until you hear it click. Center the seat then tighten the bracket.



4. Connect the WASHLET's hose.

Be sure to turn off the water supply then flush the toilet to relieve pressure.



5. Turn the WASHLET on.

Turn your water back on and plug the unit in. The LED lights will let you know when it's ready.



[Discover](#) v

[WASHLET](#) v

[Where to Buy](#)

[Choose Language](#)

Electrical code requires a ground fault 120 volt outlet for bathroom appliances, and one needs to be within reach of the three-foot WASHLET cord.

Now, see it in action. Explore all available WASHLET models.

[View Products](#)

DISCOVER

[History of WASHLET](#)
[How It Works](#)
[Benefits](#)
[Experience It](#)

TOTO WASHLET

[Customize Installation](#)
[View All](#)
[Register Your WASHLET](#)
[TOTO Customer Support](#)

WHERE TO BUY

[Showroom Locator](#)

FOLLOW US ON

Copyright © 2018, TOTO USA, Inc. All rights reserved.
[Privacy Policy](#) [Terms & Conditions](#)

