

CTS CPVC Product  
**EverTUFF® CPVC CTS Products**



Part Number	Size	Std Pk	Mstr Ctn	Prod Code
-------------	------	--------	----------	-----------

**Male Adapter - Internal Stainless Steel Reinforced**

**R Mipt x Socket - Stainless Steel Sleeve**



NSF® Certified Lead Free

4136-005R	1/2	25	300	036
4136-007R	3/4	25	300	036
4136-010R	1	10	120	036

**Male Adapter - Transition with CPVC Lined Brass Thread**

**Brass Mipt x Socket**



NSF® Certified Lead Free

4136-005BR	1/2	60	360	033
4136-007BR	3/4	40	160	033
4136-010BR	1	10	60	033
4136-012BR	1-1/4	10	60	033
4136-015BR	1-1/2	10	40	033
4136-020BR	2	8	32	033

**Male Adapter - Transition with Stainless Steel Thread**

**Socket x SS Mipt**



NSF® Certified Lead Free

4136-005SS	1/2	25	150	036
4136-007SS	3/4	25	100	036
4136-010SS	1	25	50	036
4136-012SS	1-1/4	16	0	036
4136-015SS	1-1/2	16	0	036
4136-020SS	2	8	0	036

**Reducer Bushing**

**Spigot x Socket**



NSF® Certified Lead Free

4137-101	3/4X1/2	10	500	035
4137-130	1X1/2	10	100	035
4137-131	1X3/4	10	100	035
4137-166	1-1/4X1/2	10	100	035
4137-167	1-1/4X3/4	10	100	035
4137-168	1-1/4X1	10	100	035
4137-209	1-1/2X1/2	10	100	035
4137-210	1-1/2X3/4	10	100	035
4137-211	1-1/2X1	10	100	035
4137-212	1-1/2X1-1/4	10	100	035
4137-247	2X1/2	10	50	035
4137-248	2X3/4	10	50	035
4137-249	2X1	10	50	035
4137-250	2X1-1/4	10	50	035
4137-251	2X1-1/2	10	100	035

Part Number	Size	Std Pk	Mstr Ctn	Prod Code
-------------	------	--------	----------	-----------

**Transition Bushing**

**IPS Spigot x CTS Socket**



NSF® Certified Lead Free

4140-005	1/2	10	600	035
4140-007	3/4	10	100	035
4140-010	1	10	100	035
4140-012	1-1/4	10	100	035
4140-015	1-1/2	10	100	035
4140-020	2	10	50	035

**Transition Coupling**

**IPS Socket x CTS Socket**



NSF® Certified Lead Free

4141-007	3/4	25	300	035
4141-010	1	10	150	035

**Cap**

**Socket**

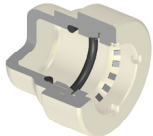


NSF® Certified Lead Free

4147-005	1/2	100	500	035
4147-007	3/4	50	250	035
4147-010	1	10	100	035
4147-012	1-1/4	10	100	035
4147-015	1-1/2	10	100	035
4147-020	2	10	50	035

**GripLoc™ Cap**

**WARNING: DO NOT INSERT FINGERS  
Grip Socket - Uses No Solvent Cement**



NSF® Certified Lead Free

GL4147-005	1/2	25	200	135
GL4147-007	3/4	25	150	135
GL4147-010	1	10	50	135

Note: The GripLoc™ is water tight, permanent and cannot be removed.

**Union**

**Socket with EPDM O-ring Seal**



100 psi Maximum Internal Pressure @ 180°F (82°C) -  
NSF® Certified Lead Free

4197-005	1/2	25	150	035
4197-007	3/4	12	48	035
4197-010	1	36	0	035
4197-012	1-1/4	12	48	035
4197-015	1-1/2	12	0	035
4197-020	2	6	36	035