



FLUID COMPONENTS - SPRAYER ACCESSORIES - AG PARTS
PRESSURE WASHER ACCESSORIES - POWER EQUIPMENT





FLUID COMPONENTS 4							
Gauge Retail Display Packaging	4	Gauge Accessories	12	Brass Ball Valves	30	Standard Nylon & Polypropylene Strainers	35
Custom Logos & Dials	4	Nylon & Polypropylene Pipe Fittings	13	Poly 2-Way & 3-Way Ball Valves	31	Large Nylon & Polypropylene Strainers	36
10 & 20 Series Gauges	5	Cam Locks	22	Polypropylene Valves	32	Polypropylene Pipe	37
24 & 30 Series Gauges	6	King Nipples	23	Bolted Ball & Zinc Plated Ball Valves	32	Mushroom Strainers, O-Rings & Screens	37
40 & 41 Series Gauges	7	Stainless Steel Fittings	24	Pipe Brackets	33	316 Stainless Steel Y-Strainer	37
54 & 58 Series Gauges	8	Brass Fittings	27	T-Bolt Clamps	33	Pressure Relief Valves	38
60 & 80 Series Gauges	9	86 & 88 Series Stainless Steel Ball Valves	29	Sealants	33	Fuel Transfer Gun	38
Edge & Indicator Gauges	10	Butterfly Handle Brass Ball Valve	30	Low-Profile Nylon & Poly Strainers	34	Tire Assemblies	39

SPRAYER ACCESSORIES 40							
Sprayer Trailers, ATV Frames & Kits	40	Tank Lids & Baskets & Bulk Head Fittings	50	Nozzle Bodies	58	Trigger Spray Guns	64
Boom Kits	41	Boomless Nozzles	51	Nozzle Body Accessories	59	Wand Spray Gun	64
No-Boom Kits	43	Flat Fan & Ceramic Spray Tips	52	Nozzle Cap Set	59	Replacement Spray Gun Tips	64
Everflo Pumps	45	Air Induction & Deflector Tips	53	15, 25, 40, 60 Gallon Bulk Tanks	60	Hose Reel Swivels	65
High Pressure Everflo Pumps	47	Nozzle Strainers & Chemical Protection	54	Wire Harnesses	61	Hose Reels	65
Clear Nylon Hose	48	Pump Adapters & Plumbing	55	Spray Gun Repair Kits	61	Backpack Sprayer	66
Retail Ready Hose	48	Quick Connect Port Fittings	55	Adjustable Spray Guns	62	Handheld Sprayers	67
Bypass & Repair Kits	48	Sprayer & Hose Accessories	56	Spot & Pistol Spray Guns	62		
Garden Hose Valves & Washers	49	Hose Clamps	57	Long Range Spray Guns	63		
Roller Pump QC Couplers	49	Nozzle Body Boom Clamps	58	Wandless Pistol Spray Gun	63		

COMET DIAPHRAGM & PLUNGER PUMPS 68							
BP & MC Series Diaphragm Pump	68	VRX, AXD, BXD & CXD Plunger Pumps	71	EWD-K & LW Series Plunger Pumps	72	SW, TW & TW-10000 Series Plunger Pumps	74
MP, P, APS & IDS Series Diaphragm Pumps	69	AWD-K & BWD-K Series Plunger Pumps	72	ZWD, FW2 & RW Series Plunger Pumps	73	Comet Pump Accessories	76
Gas & Electric Pumping Units	70						

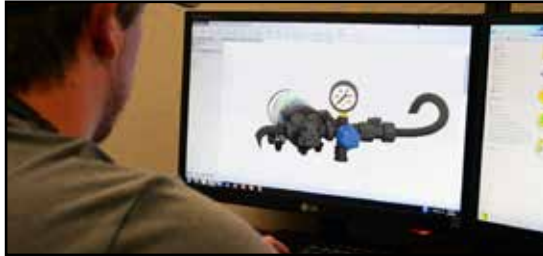
AGRICULTURAL PARTS 76							
Top & Side Wind Jacks	76	Securing Pins	81	Draw Bar Hook	84	Reducing Bushings	87
Zinc Plated Weld Collar Jacks	76	Hitch Pins	82	Straight Clevis	84	Stabilizer Stub Pins	87
Heavy Duty Jacks & Accessories	77	Rubber Handled Hitch Pins	82	Twisted Clevis	84	Lower Link Arm & Stabilizer Arm	87
Flange & Wheel Jacks & Accessories	78	Forged Hitch Pins	83	Implement Pins	85	Adjustable Stabilizer	88
Jack Retail Display Program	79	Snap Lock-Spring Hitch Pins	83	Hair Pins	85	Swing Drawbar	88
Trailer Winches	80	Clevis Pins	83	Lynch Pins	86	Draw Bars	88
Wheel Spinners	81	Top Links	83	Lock Pins for PTO Adapters	86	Ag Parts Retail Display Options	89
Universal Stroke Control Segments	81	Double Chain Clevis	84	Top Links	86		
Lift Arm Leveling Assemblies	81	Utility Clevis	84	Hitch Bushing	87		

PRESSURE WASHER ACCESSORIES 90							
Water Brooms	90	30° Angle Molded Wand & Coupler	96	3600 PSI Rotary Nozzle	99	2.5" Pressure Gauge Kit	105
14-16" Flat Surface Cleaners	91	Flex Wand	96	3700 PSI Rotary Nozzle	99	Chemical Injector Kits	105
Wet Sandblast Kit	91	4000 PSI Trigger Gun Assembly	96	4800 PSI Rotary Nozzle	99	Chemical Hose Assembly	106
Telescoping Wands & Accessories	92	5000 PSI Trigger Gun Assembly	96	5100 PSI Rotary Nozzle	99	Soap Suction Filters	106
Pressure Washer Pumps	93	Pressure Washer Gun Kit	96	Cold-Water High Pressure Hose	100	Clear Bowl Water Inlet Filter	106
2950 PSI Front Entry Trigger Gun	94	Molded Wand Extensions	96	4000 PSI Hose	100	Water Inlet Filter	106
4000 & 4050 PSI Universal Trigger Guns	94	Quick Connect Spray Nozzles	97	4000 PSI Non-Marking Hose	100	Pump Saver Solution	106
5000 PSI Trigger Gun & Fittings	94	QC Spray Nozzle Kits	97	Pressure Washer Hoses	100	Pump Oil	106
5000 PSI Universal Trigger Gun	94	QC Soap Nozzles	97	Screw Type Fittings	102	Soap Holder	106
Electric Pressure Washer Spray Gun Kit	95	1/4" MEG Nozzles	98	Garden Hose Fittings	103	Pressure Washer Retail Programs	107
Gas Powered Pressure Washer Spray Gun Kit	95	MEG Chemical Nozzle	98	O-Rings & Filters	103		
Professional Pressure Washer Spray Gun Kit	95	Variable Nozzles	99	Brass Fittings	103		
Molded Wand & Coupler	95	3000 PSI Rotary Nozzles	99	Quick Connect Fittings	104		

POWER EQUIPMENT 108							
Residential Pressure Washer	108	Industrial Pressure Washers	109	Water & Trash Pumps	110	Gasoline Power Generators	112
Farm & Ranch Pressure Washers	108						

WHY VALLEY INDUSTRIES?

LASTING QUALITY



For over 20 years, Valley Industries has been providing products to the Agricultural and Industrial markets at the international level. All Valley Industries products are engineered, assembled and sourced with high quality components, while remaining at competitive prices. Valley Industries works tirelessly to make sure our customers get what they deserve.

BUNDLE UP



Save time, money and resources by bundling with Valley Industries. With just one purchase order, bundle products from all of our brands and have everything shipped from our facility in Paynesville, MN.

360° CUSTOMER SERVICE



We know that our job doesn't end when product goes out the door. Valley Industries provides 360 degree visibility to all of our customers, big or small. Through trouble-shooting guides or an informed sales staff, effortlessly get solutions to your problems.

SILENT SALESMAN



Valley Industries takes pride in developing packaging and merchandising solutions that are cut above the rest. With a wide range of programs, Valley Industries makes it easy to generate foot traffic and dollars out the door for our customers.

FLUID COMPONENTS

SPRAYER ACCESSORIES

COMMERCIAL & INDUSTRIAL PUMPS

AGRICULTURAL COMPONENTS

PRESSURE WASHER ACCESSORIES

POWER EQUIPMENT



RETAIL DISPLAY PACKAGING

VALLEY INDUSTRIES offers the option of high quality clam shell retail display packaging for all of our gauges. This offers your customers an attractive means to display your products in their retail locations, and increase product visibility and sales.

Contact Valley Industries for minimum quantities and lead times.

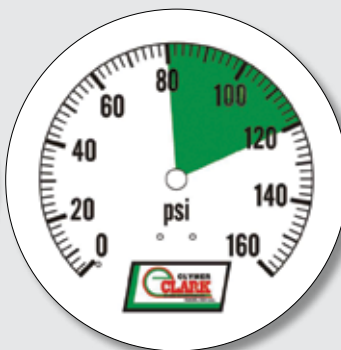
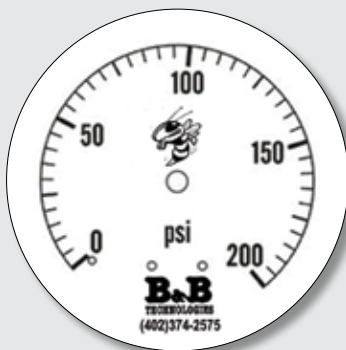


Ask About Retail Solutions for Your Valley Industries Gauges.

CUSTOM LOGOS & DIALS

VALLEY INDUSTRIES can help you increase sales by providing customized gauge logos or dials in order to make your gauges distinctive in the marketplace. By featuring your name or logo your customers are always reminded who to buy from and they can be assured they have a high quality product that is tailored to their exact needs. Custom dials also allow a means to provide product specific information not possible with a standard gauge dial, such as safe operating ranges and over-limit warnings for sensitive equipment.

Contact Valley Industries for minimum quantities and lead times.



10 SERIES & 20 SERIES GAUGES

10 SERIES GEARLESS GAUGES

DUAL OR SINGLE SCALE

10 SERIES: 23mm Casing. Center Back Mount only. These gauges are designed for use on compressors, mini regulators and pneumatic applications where space is at a premium. 25 mm and 32 mm available call for pricing. **Specific Features: Chrome Plated Case and Connection.**

COMMON FEATURES

Movement	None
Bourdon Tube	Copper Alloy, spiral wound, gearless
Pointer	Brass
Dial	White aluminum
Window	Acrylic
Fill Material	Dry only
Connection Size	1/8" CBM
Accuracy	ASME/ANSI B40.1 Grade D (±5%)

10 SERIES: 1, 1 1/4" Casing. Center Back Mount only. These gauges are designed for use on compressors, mini regulators and pneumatic applications where space is at a premium. **Specific Features: 304 Stainless Steel Case and Brass Connection**



ORDERING INFORMATION

Part #	PSI Range
23MM0010DCB60	0 - 60
23MM0010DCB100	0 - 100
23MM0010DCB160	0 - 160



ORDERING INFORMATION

Non-Stock
Please Call for pricing and ordering information.

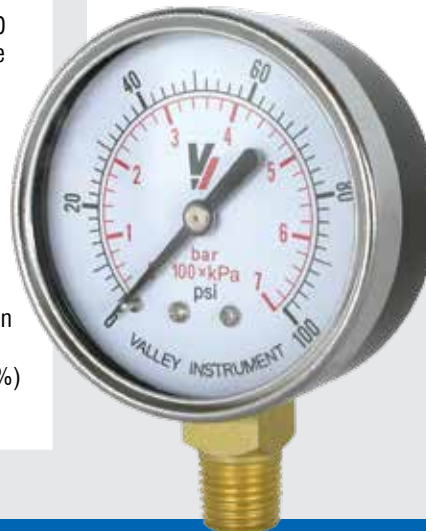
FEATURES

Movement	Brass
Bourdon Tube	C-Shaped in copper alloy up to 600 PSI and Helical in phosphor bronze above 600 PSI.
Pointer	Black enameled aluminum
Dial	White aluminum
Window	Acrylic
Case Material	Steel, black painted
Bezel	Chrome plated
Connection Material	Brass
Connection Size	1/8" MNPT on 1 1/2" size. 1/4" MNPT on 2", 2 1/2" and 4" sizes.
Accuracy	ASME/ANSI B40.1 Grade B (3-2-3%)
Fill Material	Dry only
Wetted Parts	Copper Alloy

20 SERIES GENERAL SERVICE GAUGES

DUAL SCALE

1 1/2", 2", 2 1/2", and 4" Casing. Center Back, Bottom, Front or Panel Mount. These gauges are designed for use with gas, oil, and water or any medium not corrosive to brass or bronze.



ORDERING INFORMATION

1 st Digit	2 nd Digit	3 rd , 4 th Digit	5 th Digit	6 th Digit	7 th Digit	Range	Suffix
Dial Size	Case Style	Model #	Fill Material	Case Material	Wetted Parts	PSI	Options
0 = 1 1/2"	1 = Bottom	20	D = Dry	S=Steel	B = Brass	· See Range	Custom Logo
1 = 2"	2 = Back					Charts	Color Dial
2 = 2 1/2"	3 = Front					· VAC=30"	Special Dial
4 = 4"	4 = Panel					vacuum	Etc..

1120DSB200 = 2" Bottom Mount, Model 20, Dry, Steel Case, 200 PSI

FLUID COMPONENTS

SPRAYER ACCESSORIES

COMMERCIAL & INDUSTRIAL PUMPS

AGRICULTURAL COMPONENTS

PRESSURE WASHER ACCESSORIES

POWER EQUIPMENT



24 SERIES & 30 SERIES GAUGES

24 SERIES GENERAL SERVICE GAUGES
SINGLE SCALE

2", 2½", and 4" Casing
Bottom Mount only. These gauges are designed for use with gas, oil, and water or any medium not corrosive to brass or bronze.



FEATURES:

Movement	Brass
Bourdon Tube	C-Shaped in copper alloy up to 600 PSI and Helical in phosphor bronze above 600 PSI.
Pointer	Black enameled aluminum
Dial	White aluminum
Window	Acrylic
Case Material	ABS standard, black steel optional
Bezel	Black
Connection	Brass
Material	
Connection Size	¼" MNPT
Accuracy	ASME/ANSI B40.1 Grade B (3-2-3%)
Fill Material	Dry only
Wetted Parts	Copper Alloy

ORDERING INFORMATION

1 st Digit	2 nd Digit	3 rd , 4 th Digit	5 th Digit	6 th Digit	7 th Digit	Range	Suffix
Dial Size	Case Style	Model #	Fill Material	Case Material	Wetted Parts	PSI	Options
1 = 2"	1 = Bottom	24	D = Dry*	A = ABS	B = Brass	· See Range	Custom Logo
2 = 2½"				S = Black		Charts	Color Dial
4 = 4"				Steel*		· VAC=30" vacuum	Special Dial Etc..
1124DSB200 = 2" Bottom Mount, Model 24, Dry, Steel Case, 200 PSI						*Special Order.	

30 SERIES UTILITY GAUGES
DUAL SCALE

1½", 2" and 2½", Casing
Center Back, Bottom, Front or Panel Mount. These gauges are designed for use with gas, oil, and water or any medium not corrosive to brass or bronze.



FEATURES:

Movement	Brass
Bourdon Tube	C-Shaped in copper alloy up to 600 PSI and Helical in phosphor bronze above 600 PSI.
Pointer	Black enameled aluminum
Dial	White aluminum
Window	Polycarbonate
Case Material	Steel, corrosion resistant black
Bezel	Stainless Steel Rolled
Connection	Brass
Material	
Connection Size	⅜" MNPT on 1½" size. ¼" MNPT on 2" and 2½" sizes.
Accuracy	ASME/ANSI B40.1 Grade A (2-1-2%)
Fill Material	Dry only
Wetted Parts	Copper Alloy

ORDERING INFORMATION

1 st Digit	2 nd Digit	3 rd , 4 th Digit	5 th Digit	6 th Digit	7 th Digit	Range	Suffix
Dial Size	Case Style	Model #	Fill Material	Case Material	Wetted Parts	PSI	Options
0 = 1½"	1 = Bottom	30	D = Dry	S = Black Steel	B = Brass	· See Range	Custom Logo
1 = 2"	2 = Back					Charts	Color Dial
2 = 2½"	3 = Front					· VAC=30" vacuum	Special Dial Etc..
	4 = Panel						
1130DSB200 = 2" Bottom Mount, Model 30, Dry, Steel Case, 200 PSI						*Special Order.	

40 SERIES & 41 SERIES GAUGES

FEATURES:

Movement	Brass
Bourdon Tube	C-Shaped in copper alloy up to 600 PSI and Helical in phosphor bronze above 600 PSI.
Pointer	Black enameled aluminum
Dial	White aluminum
Window	Polycarbonate - temperature compensating
Case Material	304 Stainless steel
Connection Material	Brass
Connection Size	1/8" MNPT on 1 1/2" size. 1/4" MNPT on 2", 2 1/2" and 4" sizes.
Accuracy	ASME/ANSI B40.1 Grade A (2-1-2%)
Fill Material	Dry, Glycerin, Silicone, Florolube
Wetted Parts	Copper Alloy



40 SERIES INDUSTRIAL GAUGES DUAL SCALE

1 1/2", 2", 2 1/2" and 4" Casing
Center Back, Bottom, Front or Panel Mount. These gauges are designed for use with any medium not corrosive to brass or bronze. Liquid-filled gauges are recommended for reducing shock caused by pressure fluctuations or vibration (standard). Dry is special order.

ORDERING INFORMATION

1 st Digit	2 nd Digit	3 rd , 4 th Digit	5 th Digit	6 th Digit	7 th Digit	Range	Suffix
Dial Size	Case Style	Model #	Fill Material	Case Material	Wetted Parts	PSI	Options
0 = 1 1/2"	1 = Bottom	40	D = Dry*	X=Stainless	B = Brass	· See Range	Custom Logo
1 = 2"	2 = Back		G = Glycerin			Charts	Color Dial
2 = 2 1/2"	3 = Front		S = Silicone*			· VAC=30"	Special Dial
4 = 4"	4 = Panel		F = Florolube*			vacuum	Etc..
1140GXB200 = 2" Bottom Mount, Model 40, Glycerin Filled, Stainless Steel Case, 200 PSI							*Special Order.

FEATURES:

Movement	Brass
Bourdon Tube	C-Shaped in copper alloy up to 1000 PSI and Helical in phosphor bronze above 1000 PSI.
Pointer	Black enameled aluminum
Dial	White aluminum
Window	Acrylic
Case Material	304 Stainless steel
Connection Material	Brass
Connection Size	1/4" MNPT
Accuracy	ASME/ANSI B40.1 Grade B (3-2-3%)
Fill Material	Dry, Glycerin
Wetted Parts	Copper Alloy



41 SERIES OEM GAUGES SINGLE SCALE

2 1/2", and 4" Casing
Center Back, Bottom, Front or Panel Mount. These gauges are designed for use with any medium not corrosive to brass or bronze. Liquid-filled gauges are recommended for reducing shock caused by pressure fluctuations or vibration. Liquid filled standard.

ORDERING INFORMATION

1 st Digit	2 nd Digit	3 rd , 4 th Digit	5 th Digit	6 th Digit	7 th Digit	Range	Suffix
Dial Size	Case Style	Model #	Fill Material	Case Material	Wetted Parts	PSI	Options
2 = 2 1/2"	1 = Bottom	41	D = Dry*	X=Stainless	B = Brass	· See Range	Custom Logo
	2 = Back		G = Glycerin			Charts	Color Dial
	3 = Front					· VAC=30"	Special Dial
	4 = Panel					vacuum	Etc..
2141GXB200 = 2" Bottom Mount, Model 41, Glycerin Filled, Stainless Steel Case, 200 PSI							*Special Order.

FLUID COMPONENTS

SPRAYER ACCESSORIES

COMMERCIAL & INDUSTRIAL PUMPS

AGRICULTURAL COMPONENTS

PRESSURE WASHER ACCESSORIES

POWER EQUIPMENT



54 SERIES & 58 SERIES GAUGES

54 SERIES STAINLESS STEEL OEM GAUGES
SINGLE SCALE

2½", and 4" Casing
Center Back, Bottom, Front or Panel Mount. These gauges are designed for use with any medium not corrosive to stainless steel. Liquid-filled gauges are recommended for reducing shock caused by pressure fluctuations or vibration. Liquid filled standard; dry special order.



FEATURES:

Movement	Stainless Steel
Bourdon Tube	316 Stainless Steel
Pointer	Black enameled aluminum
Dial	White aluminum
Window	Polycarbonate
Case Material	304 Stainless Steel
Connection Material	304 Stainless Steel
Connection Size	¼" MNPT standard
Accuracy	ASME/ANSI B40.1 Grade B (3-2-3%)
Fill Material	Dry, Glycerin (std.), Silicone, Florolube
Wetted Parts	Stainless Steel

ORDERING INFORMATION

1 st Digit	2 nd Digit	3 rd , 4 th Digit	5 th Digit	6 th Digit	7 th Digit	Range	Suffix
Dial Size	Case Style	Model #	Fill Material	Case Material	Wetted Parts	PSI	Options
2 = 2½"	1 = Bottom	54	D = Dry*	X=Stainless	X=Stainless	· See Range	Custom Logo
4 = 4"	2 = Back		G = Glycerin			Charts	Color Dial
	3 = Front		S = Silicone*			· VAC=30"	Special Dial
	4 = Panel		F = Florolube*			vacuum	Etc..
2154DXX200 = 2" Bottom Mount, Model 54, Dry, Stainless Steel Case, 200 PSI							*Special Order.

58 SERIES STAINLESS FIELD REPAIRABLE GAUGES
SINGLE SCALE

4" Casing
Bottom Mount only. These gauges are designed for use with any medium not corrosive to Stainless Steel. Liquid-filled gauges are recommended for reducing shock caused by pressure fluctuations or vibration.



FEATURES:

Movement	Stainless Steel
Bourdon Tube	316 Stainless Steel
Pointer	Black enameled aluminum
Dial	White aluminum
Window	Polycarbonate
Case Material	304 Stainless Steel
Bezel	Stainless Steel, Bayonet type
Connection Material	316 Stainless Steel
Connection Size	½" MNPT
Accuracy	ASME/ANSI B40.1 Grade 1A (1%)
Fill Material	Dry, Glycerin, Silicone, Florolube
Wetted Parts	Stainless Steel

ORDERING INFORMATION

1 st Digit	2 nd Digit	3 rd , 4 th Digit	5 th Digit	6 th Digit	7 th Digit	Range	Suffix
Dial Size	Case Style	Model #	Fill Material	Case Material	Wetted Parts	PSI	Options
4 = 4"	1 = Bottom	58	D = Dry*	X=Stainless	X=Stainless	· See Range	Custom Logo
			G = Glycerin			Charts	Color Dial
			S = Silicone*			· VAC=30"	Special Dial
			F = Florolube*			vacuum	Etc..
4158DXX200 = 4" Bottom Mount, Model 58, Stainless Dry, Steel Case, 200 PSI							*Special Order.

60 SERIES & 80 SERIES GAUGES

FEATURES:

Movement	Brass
Diaphragm	Sensitive phosphor bronze
Pointer	Black enameled aluminum
Dial	White aluminum
Window	Acrylic
Case Material	Steel, black painted
Connection Material	Brass
Connection Size	1/4" MNPT on all sizes
Accuracy	ASME/ANSI B40.1 Grade A (2-1-2%)
Fill Material	Dry only
Wetted Parts	Copper Alloy



60 SERIES LOW PRESSURE GAUGES SINGLE SCALE

2 1/2", and 4" Casing

Bottom Mount only. These gauges are designed for use with any medium not corrosive to bronze or brass and pressures up to 10 psi.

ORDERING INFORMATION

1 st Digit	2 nd Digit	3 rd , 4 th Digit	5 th Digit	6 th Digit	7 th Digit	Range	Suffix
Dial Size	Case Style	Model #	Fill Material	Case Material	Wetted Parts	PSI	Options
2 = 2 1/2"	1 = Bottom	60	D = Dry	S=Steel	B = Brass	· See Range Charts	Custom Logo
4 = 4"						· VAC=30" vacuum	Color Dial Special Dial Etc..

4160DSB015 = 4" Bottom Mount, Model 60, Dry, Steel Case, 15 PSI

*Special Order.

FEATURES:

Movement	304 Stainless Steel
Bourdon Tube	316 Stainless Steel
Pointer	Black enameled aluminum
Dial	White aluminum
Window	Acrylic
Case Material	Enameled steel
Connection Material	304 Stainless Steel
Connection Size	1/4" MNPT
Accuracy	ASME/ANSI B40.1 Grade A (2-1-2%)
Fill Material	Dry only
Wetted Parts	Stainless Steel



80 SERIES AMONIA GAUGES SINGLE SCALE

2 1/2", and 4" Casing

Bottom Mount only. This rugged product employs a 316 Stainless Steel bourdon tube, ASME grade A movement, and a Stainless Steel socket all housed in a corrosive resistant painted steel case. This gauge is of the highest quality and is very competitively priced. In addition we will include your name and logo on the dial free of charge with a minimum order of 250 pieces per range. Also available with Glass Lense.

ORDERING INFORMATION

1 st Digit	2 nd Digit	3 rd , 4 th Digit	5 th Digit	6 th Digit	7 th Digit	Range	Suffix
Dial Size	Case Style	Model #	Fill Material	Case Material	Wetted Parts	PSI	Options
2 = 2 1/2"	1 = Bottom	80	D = Dry	S=Steel	X=Stainless	· See Range Charts	Custom Logo
4 = 4"						· VAC=30" vacuum	Color Dial Special Dial Etc..

4180DSX160 = 4" Bottom Mount, Model 80, Dry, Steel Case, 160 PSI

*Special Order.

FLUID COMPONENTS

SPRAYER ACCESSORIES

COMMERCIAL & INDUSTRIAL PUMPS

AGRICULTURAL COMPONENTS

PRESSURE WASHER ACCESSORIES

POWER EQUIPMENT



EDGE & INDICATOR GAUGES

EDGE GAUGE



FEATURES:

Movement	Gearless
Bourbon Tube	C-Shaped copper alloy
Pointer	Red plastic
Dial	White plastic
Window	Acrylic
Case Material	Plastic
Connection Material	Brass
Connection Size	10-32 Female thread
Accuracy	ASME/ANSI B40.1 Grade D (±5%)
PSI & bar.	Ranges 60PSI & 100 PSI
½" x 2½" Case	

Ideally suited for low-profile panels where space is at a premium. Designed for use with air, gas, light oil, water and any medium not corrosive to brass or bronze.

ORDERING INFORMATION:

Part #	PSI Range
00 EDGE 60	0 - 60
00 EDGE 100	0 - 100

INDICATOR GAUGES



1HA344A



1HA7353



1K528E

Part #	Size	Description
1HA344A	2"	Oil Gauge, 1/4" NPT Oliver Logo
1HA7353	2"	Ammeter Gauge, Oliver Logo
1K528E	2"	Temperature Gauge, Oliver Logo, 52" Cap. Tube

TEMPERATURE GAUGE



Part # 30-3485587
Size 3"

TEMPERATURE GAUGE



Part # 2100-606
Size 2"

TEMPERATURE GAUGE



Part # C3NN18287A-P
Size 2"
Includes Bracket & Farrel

INDICATOR GAUGES

FLUID COMPONENTS

SPRAYER ACCESSORIES

COMMERCIAL & INDUSTRIAL PUMPS

AGRICULTURAL COMPONENTS

PRESSURE WASHER ACCESSORIES

POWER EQUIPMENT

OIL PRESSURE GAUGE



Part #	Size	PSI
30-3485471	2"	0-50

OIL PRESSURE GAUGE



Part #	Size	PSI
70207834	2"	0-30
1/8" CBM		

OIL PRESSURE GAUGE



Part #	Size	PSI
9N9273A	2"	0-50
1/8" CBM		

OIL PRESSURE GAUGE



Part #	Size	PSI
FAD9273A	2"	0-80
1/8" CBM		

AMPERES GAUGE



Part #	Size	Range
AONN10670A	2"	30-0-30

AMPERES GAUGE



Part #	Size	Range
9N9273A	2"	30-0-30

AMPERES GAUGE



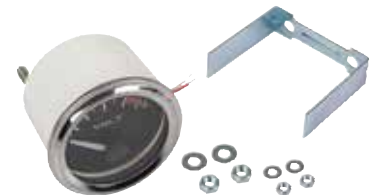
Part #	Size	Range
70275840	2"	20-0-20

TEMPERATURE GAUGE



Part #	Size
UTG25	2"
Includes 70" Capillary Line	

VOLTMETER GAUGE



Part #	Size	Range
VOLT12LT	2"	8-16V



GAUGE ACCESSORIES

GAUGE COVERS



Part #	Description
20RC-BLK	Black protective cover for 2" face
25RC-BLK	Black protective cover for 2 1/2" face
25RC-BL	Blue protective cover for 2 1/2" face

ANSI STANDARD RINGS



Part #	Size	Description
ANSI RING-20	2"	ANSI Standard Ring
ANSI RING-25	2 1/2"	ANSI Standard Ring

Oversize polished stainless steel rings designed to allow DIN standard gauges to fit into ANSI standard panel cutouts.

UNIVERSAL CLAMP RINGS



Part #	Size	Description
0430/40-CR	1 1/2"	For 30, 40, 41 Series
1430/40-CR	2"	For 30, 40, 41 Series
2440-CR	2 1/2"	For 30, 40, 41 Series

Totally circular rings with two eccentric screws on each side to fully hold the pressure gauge into a panel. Rings can be rotated 360°.

THREADED LENS



Part #	Description
AF-212	2 1/2" Threaded polycarbonate

Use with 2 1/2" model 80 Gauge

FRONT FLANGE



Part #	Description
0330/40-FF	30/40/41 Series 1.5" Gauges
1330/40-FF	30/40/41 Series 2" Gauges
2330/40-FF	30/40/41 Series 2 1/2" Gauges
4330/40-FF	30/40/41 Series 4" Gauges

Push on Front Flange for panel mount gauge

UNIVERSAL 'U' CLAMPS



Part #	Size	Description
2440-UC	2 1/2"	For 40, 41 Series gauges
2454-UC	2 1/2"	For 54 Series gauges
4440-UC	4"	For 40 Series gauges

No case studs required. Clamp attaches to groove in connection. Rings can be rotated 360°.

ADAPTERS



Part #	Description	Thread
AB-1418	Reducer	1/4" FNPT x 1/8" MNPT
AB-1412-HE	Adapter	1/4" FNPT x 1/2" MNPT

GAUGE DAMPENER



Part #	Thread Size	Description
GD-14	1/4"	External Pressure Snubber

Protects from pressure surges.
Standard porosity (water to light oil)

PIPE FITTINGS

NYLON FITTINGS

Our nylon fittings are made from high quality type 6 virgin resin. Nylon fittings are generally acceptable for use at working pressures up to 150 PSI at normal room temperatures. At very low pressures, temperatures can approach 175° F with no degradation.

Nylon is resistant to a broad range of chemicals including most agricultural chemicals, ammonium compounds, detergents, diesel fuel, ethanol, gasoline, hexane, magnesium sulphate, most sodium compounds, trichloroethylene and zinc sulphate.

Nylon fittings should Not be used with acid-based fertilizers, bromine, chlorine, fluorine, hydrochloric acid, iodine, nitric acid, phosphoric acid, sulfuric acid and xylene.

Recommended	Not Recommended
Use for high structural or physical strength	Use with acid-based fertilizers
Use for temperature from below 0° F to 200° F	Use with xylene-based chemicals
Use Teflon® tape	Use in situations with extreme exposure to ultraviolet radiation

Physical Properties of Nylon

Specific Gravity	1.12
Heat Distortion	375° F
Rockwell Hardness (R)	120
Izod Impact	1.0 ft. - lbs./in

POLYPROPYLENE FITTINGS

Our polypropylene fittings are made 10% glass polypropylene resin. Polypropylene fittings are generally acceptable for use at working pressures up to 150 PSI at ambient temperatures. As with all thermoplastics, an increase in working temperature is accompanied by a decrease in operating pressure.

Polypropylene is resistant to a broad range of chemicals including most agricultural chemicals, acid based fertilizers, ammonium compounds, calcium carbonate, ethanol, hydrochloric acid, magnesium sulfate, oxalic acid, propionic acid, phosphoric acid and sodium compounds.

Polypropylene fittings should not be used with aromatic hydrocarbons, carbon tetrachloride, gasoline, hexane, kerosene, nitric acid, sodium hypochlorite, toluene trichloroethylene and xylene.

Recommended	Not Recommended
Use at normal ag sprayer spring and summer field conditions	Use impact wrenches
Use for acid resistance	Overtighten
Use for UV resistance, prolonged exposure to sunlight.	Use at very hot or cold temperature over 150° F or under 32° F
Use for cosmetic appearance	Use Teflon tape or Teflon sealants
	Use with toluene or xylene based chemicals

Physical Properties of Polypropylene

Specific Gravity	0.98
Heat Distortion	285° F
Rockwell Hardness (R)	100
Izod Impact	0.8 ft. - lbs./in



CLAMSHELL KITS

VALLEY INDUSTRIES offers the option of high quality clamshell retail display packaging on select fittings.

Contact Valley Industries for minimum quantities and availability.

ABBREVIATIONS

MPS	Male Pipe Straight
SPF	Female Pipe Straight
HB	Hose Barb
MPT	Male National Pipe Thread
MGHT	Male Garden Hose Thread
FGHT	Female Garden Hose Thread
NPT	National Pipe Thread
FPT	Female National Pipe Thread
FBSP	Female British Straight Pipe



PIPE FITTINGS

Sold in full bag quantities only

MALE FITTINGS



MPTxHB	Bag Qty.	Nylon	PolyPro
1/8 x 3/16	50	A18316	3A18316
1/8 x 1/4	50	A1814**	3A1814
1/8 x 5/16	50	A18516	3A18516
1/8 x 3/8	50	A1838	3A1838
1/4 x 3/16	50	A14316	3A14316
1/4 x 1/4	50	A14**	3A14
1/4 x 5/16	50	A14516	3A14516
1/4 x 3/8	50	A1438**	3A1438
1/4 x 1/2	50	A1412	3A1412
3/8 x 1/4	50	A3814	3A3814
3/8 x 5/16	50	A38516	3A38516
3/8 x 3/8	50	A38**	3A38
3/8 x 1/2	50	A3812**	3A3812
3/8 x 5/8	50	A3858**	3A3858
1/2 x 1/4	50	A1214**	3A1214
1/2 x 3/8	50	A1238**	3A1238
1/2 x 1/2	50	A12**	3A12
1/2 x 5/8	25	A1258**	3A1258
1/2 x 3/4	25	A1234**	3A1234
3/4 x 1/4	25	A3414	3A3414
3/4 x 3/8	25	A3438	3A3438
3/4 x 1/2	25	A3412	3A3412
3/4 x 5/8	25	A3458	3A3458
3/4 x 3/4	25	A34	3A34
3/4 x 1	25	A34100**	3A34100
1 x 3/4	25	A10034**	3A10034
1 x 1	25	A100**	3A100
1 x 1 1/4	25	A100114	3A100114
1 1/4 x 3/4	1	A11434	3A11434
1 1/4 x 1	1	A114100	3A114100
1 1/4 x 1 1/4	1	A114	3A114
1 1/4 x 1 1/2	1	A114112	3A114112
1 1/2 x 1 1/4	1	A112114	3A112114
1 1/2 x 1 1/2	1	A112 •	3A112
2 x 2	1	A200 •	3A200

**Add -CSK suffix for clamshell retail packaging.

• Add BC- prefix for barcoded product

MALE ELBOWS



MPTxHB	Bag Qty.	Nylon	PolyPro
1/8 x 1/4	50	EL1814	3EL1814
1/8 x 3/8	50	EL1838	3EL1838
1/4 x 3/16	50	EL14316	3EL14316
1/4 x 1/4	50	EL14	3EL14
1/4 x 5/16	50	EL14516	3EL14516
1/4 x 3/8	50	EL1438	3EL1438
1/4 x 1/2	50	EL1412	3EL1412
3/8 x 1/4	50	EL3814	3EL3814
3/8 x 5/16	50	EL38516	3EL38516
3/8 x 3/8	50	EL38**	3EL38
3/8 x 1/2	50	EL3812**	3EL3812
3/8 x 5/8	50	EL3858	3EL3858
1/2 x 1/4	50	EL1214	3EL1214
1/2 x 3/8	50	EL1238**	3EL1238
1/2 x 1/2	50	EL12**	3EL12
1/2 x 5/8	25	EL1258**	3EL1258
1/2 x 3/4	25	EL1234**	3EL1234
3/4 x 1/4	25	EL3414	3EL3414
3/4 x 3/8	25	EL3438**	3EL3438
3/4 x 1/2	25	EL3412**	3EL3412
3/4 x 5/8	25	EL3458	3EL3458
3/4 x 3/4	25	EL34**	3EL34
3/4 x 1	25	EL34100 •	3EL34100
1 x 1	25	EL100	3EL100
1 x 1/2	1	EL10012	3EL10012
1 x 3/4	1	EL10034	3EL10034
1 1/4 x 1 1/4	1	EL114	3EL114
1 1/4 x 1	1	EL114100	3EL114100
1 1/2 x 1 1/2	1	EL112 •	3EL112
2 x 2	1	EL200	3EL200

**Add -CSK suffix for clamshell retail packaging.

• Add BC- prefix for barcoded product

FEMALE ELBOWS

FPTxHB	Bag Qty.	Nylon	PolyPro
1/8 x 1/4	50	EL1814F	3EL1814F
1/8 x 3/8	50	EL1838F	3EL1838F
1/4 x 3/16	50	EL14316F	3EL14316F
1/4 x 1/4	50	EL14F	3EL14F
1/4 x 5/16	50	EL1438F	3EL1438F
3/8 x 1/4	50	EL3814F	3EL3814F
3/8 x 3/8	50	EL38F	3EL38F
3/8 x 1/2	50	EL3812F	3EL3812F
1/2 x 1/2	25	EL12F	3EL12F
1/2 x 5/8	25	EL1258F	3EL1258F
1/2 x 3/4	25	EL1234F	3EL1234F
3/4 x 1/2	25	EL3412F	3EL3412F
3/4 x 5/8	25	EL3458F	3EL3458F
3/4 x 3/4	25	EL34F	3EL34F



Sold in full bag quantities only

PIPE FITTINGS

FPTxFPT ELBOWS



FPTxFPT	Bag Qty.	Nylon	PolyPro
1/2 x 1/2	25	N/A	3LL12
3/4 x 3/4	25	N/A	3LL34
1 x 1	1	LL100	N/A
1 1/4 x 1 1/4	1	LL114	3LL114
1 1/2 x 1 1/2	1	LL112	N/A

STREET ELBOWS



FPTxMPT	Bag Qty.	Nylon	PolyPro
1/4 x 1/4	25	SE14	3SE14
3/8 x 3/8	25	SE38	3SE38
1/2 x 1/2	25	SE12	3SE12
3/4 x 3/4	10	SE34 •	3SE34
1 x 1	10	SE100	3SE100
1 1/2 x 1 1/2	1	SE112	3SE112
2 x 2	1	SE200 •	3SE200

• Add BC- prefix for barcoded product

TEES



FPT	Bag Qty.	Nylon	PolyPro
1/4	25	TT14	3TT14
1/2	25	TT12	3TT12
3/4	25	TT34 •	3TT34
1	1	TT100	3TT100
1 1/4	1	TT114	3TT114
1 1/2	1	TT112	3TT112
2	1	TT200	3TT200

• Add BC- prefix for barcoded product

FEMALE FITTINGS



FPTxHB	Bag Qty.	Nylon	PolyPro
1/4 x 1/4	50	A14F	3A14F
1/4 x 3/8	50	A1438F	3A1438F
3/8 x 1/4	50	A3814F	3A3814F
3/8 x 3/8	50	A38F	3A38F
3/8 x 1/2	50	A3812F	3A3812F
1/2 x 1/4	50	A1214F	3A1214F
1/2 x 3/8	50	A1238F	3A1238F
1/2 x 1/2	25	A12F	3A12F
1/2 x 5/8	25	A1258F	3A1258F
1/2 x 3/4	25	A1234F	3A1234F
3/4 x 3/8	25	A3438F	3A3438F
3/4 x 1/2	25	A3412F	3A3412F
3/4 x 5/8	25	A3458F	3A3458F
3/4 x 3/4	25	A34F	3A34F

STREET ELBOWS 45°



FPTxMPT	Bag Qty.	Nylon	PolyPro
3/4 x 3/4	10	SE3445	3SE3445

COUPLINGS



FPTxFPT	Bag Qty.	Nylon	PolyPro
1/2 x 1/2	50	FC12**	3FC12
3/4 x 3/4	10	FC34**	3FC34
3/8 x 3/8	10	FC38	N/A
1 x 1	10	FC100	3FC100
1 1/4 x 1 1/4	1	FC114	3FC114
1 1/2 x 1 1/2	1	FC112	3FC112
2 x 2	1	FC200 •	3FC200

**Add -CSK suffix for clamshell retail packaging.
• Add BC- prefix for barcoded product

FLUID COMPONENTS

SPRAYER ACCESSORIES

COMMERCIAL & INDUSTRIAL PUMPS

AGRICULTURAL COMPONENTS

PRESSURE WASHER ACCESSORIES

POWER EQUIPMENT



PIPE FITTINGS

Sold in full bag quantities only

REDUCING NIPPLES



MPTxMPT	Bag Qty.	Nylon	PolyPro
1/4 x 1/8	50	M1418	3M1418
3/8 x 1/8	50	M3818	3M3818
3/8 x 1/4	50	M3814	3M3814
1/2 x 1/4	50	M1214	3M1214
1/2 x 3/8	50	M1238	3M1238
3/4 x 3/8	25	M3438	3M3438
3/4 x 1/2	25	M3412**	3M3412

**Add -CSK suffix for clamshell retail packaging.

REDUCER BUSHINGS

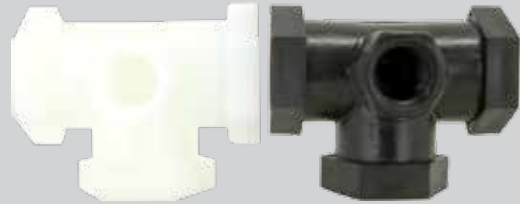


MPTxFPT	Bag Qty.	Nylon	PolyPro
3/8 x 1/8	50	RB3818	3RB3818
3/8 x 1/4	50	RB3814**	3RB3814
1/2 x 1/8	50	RB1218	3RB1218
1/2 x 1/4	50	RB1214**	3RB1214
1/2 x 3/8	50	RB1238**	3RB1238
3/4 x 1/8	25	RB3418	3RB3418
3/4 x 1/4	25	RB3414**	3RB3414
3/4 x 3/8	25	RB3438	3RB3438
3/4 x 1/2	25	RB3412	3RB3412
1 x 1/2	25	RB10012**	3RB10012
1 x 3/4	25	RB10034**	3RB10034
1 1/4 x 3/4	1	RB11434 •	3RB11434
1 1/4 x 1	1	RB114100 •	3RB114100
1 1/2 x 3/4	1	RB11234	N/A
1 1/2 x 1	1	RB112100 •	3RB112100
1 1/2 x 1 1/4	1	RB112114 •	3RB112114
2 x 3/4	1	RB20034	3RB20034
2 x 1	1	RB200100	3RB200100
2 x 1 1/4	1	RB200114 •	3RB200114
2 x 1 1/2	1	RB200112 •	3RB200112
3 x 2	1	RB300200	3RB300200

**Add -CSK suffix for clamshell retail packaging.

• Add BC- prefix for barcoded product

TEES 1/4" GAUGE PORT



FPT	Bag Qty.	Nylon	PolyPro
1/2	25	GTT1214	3GTT1214
3/4	1	GTT3414	3GTT3414

NIPPLES



MPTxMPT	Bag Qty.	Nylon	PolyPro
1/8 x 1/8	50	M18	3M18
1/4 x 1/4	50	M14	3M14
3/8 x 3/8	50	M38	3M38
1/2 x 1/2	50	M12	3M12
3/4 x 3/4	25	M34**	3M34
1 x 1	25	M100	3M100
1 1/4 x 1 1/4	1	M114	3M114
1 1/2 x 1 1/2	1	M112 •	3M112
2 x 2	1	M200 •	3M200

**Add -CSK suffix for clamshell retail packaging.

• Add BC- prefix for barcoded product

HEX PLUGS



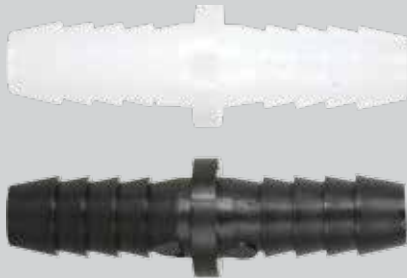
MPT	Bag Qty.	Nylon	PolyPro
1/8	50	F18	3F18
1/4	50	F14**	3F14
3/8	50	F38	3F38
1/2	50	F12**	3F12
3/4	25	F34**	3F34
1	25	F100	3F100
1 1/4	1	F114	3F114
1 1/2	1	F112	3F112
2	1	F200	3F200

**Add -CSK suffix for clamshell retail packaging.

Sold in full bag quantities only

HOSE BARB FITTINGS

HOSE MENDERS



HBxHB	Bag Qty.	Nylon	PolyPro
1/4 x 1/4	50	SHM14**	3SHM14
3/8 x 3/8	50	SHM38**	3SHM38
1/2 x 3/8	50	SHM1238**	3SHM1238
1/2 x 1/2	50	SHM12**	3SHM12
1/2 x 5/8	25	SHM1258	3SHM1258
5/8 x 5/8	25	SHM58	3SHM58
3/4 x 3/4	25	SHM34	3SHM34
1 x 1	25	SHM100	3SHM100
1 1/4 x 1 1/4	1	SHM114	3SHM114
1 1/2 x 1 1/2	1	SHM112	3SHM112
2 x 2	1	SHM200	3SHM200

**Add -CSK suffix for clamshell retail packaging.
With Center Stop

HOSE MENDERS



HBxHB	Bag Qty.	Nylon	PolyPro
1/4 x 3/16	50	HM14316	3HM14316
1/4 x 1/4	50	HM14	3HM14
5/16 x 5/16	50	HM516	3HM516
3/8 x 1/4	50	HM3814	3HM3814
1/2 x 1/4	50	HM1214	3HM1214
1/2 x 3/8	50	HM1238	3HM1238
5/8 x 3/8	25	HM5838	3HM5838
5/8 x 5/8	25	HM58	3HM58

TEES



MPTxHB	Bag Qty.	Nylon	PolyPro
1/8 x 1/4	50	T1814T	3T1814T
1/4 x 1/4	50	T14T	3T14T
1/4 x 3/8	50	T1438T	3T1438T
1/4 x 1/2	50	T1412T	3T1412T
3/8 x 1/4	50	T3814T	3T3814T
3/8 x 3/8	50	T38T	3T38T
3/8 x 1/2	50	T3812T	3T3812T
1/2 x 3/8	50	T1238T	3T1238T
1/2 x 1/2	50	T12T	3T12T
1/2 x 5/8	25	T1258T	3T1258T
1/2 x 3/4	25	T1234T	3T1234T
3/4 x 3/8	25	T3438T	3T3438T
3/4 x 1/2	25	T3412T	3T3412T
3/4 x 5/8	25	T3458T	3T3458T
3/4 x 3/4	25	T34T	3T34T

TEES



HB ¹ xHB ^{2/3}	Bag Qty.	Nylon	PolyPro
1/4 x 1/4	50	T14	3T14
1/4 x 3/8	50	T1438	3T1438
3/8 x 3/8	50	T38**	3T38
3/8 x 1/2	50	T3812	3T3812
3/8 x 5/8	25	T3858	3T3858
1/2 x 3/8	25	T1238	3T1238
1/2 x 1/2	1	T12**	3T12
5/8 x 5/8	1	T58	3T58
3/4 x 1/2	1	T3412	3T3412
3/4 x 3/4	1	T34	3T34
1 x 1	1	T100	3T100
1 1/4 x 1 1/4	1	T114	3T114
1 1/2 x 1 1/2	1	T112	3T112
2 x 2	1	T200	3T200

**Add -CSK suffix for clamshell retail packaging.

FLUID COMPONENTS

SPRAYER ACCESSORIES

COMMERCIAL & INDUSTRIAL PUMPS

AGRICULTURAL COMPONENTS

PRESSURE WASHER ACCESSORIES

POWER EQUIPMENT



HOSE BARB FITTINGS

Sold in full bag quantities only

HOSE FITTINGS



MGHTxHB	Bag Qty.	Nylon	PolyPro
3/4 x 1/4	25	D3414	3D3414
3/4 x 3/8	25	D3438**	3D3438
3/4 x 1/2	25	D3412**	3D3412
3/4 x 5/8	25	D3458	3D3458
3/4 x 3/4	25	D34**	3D34

**Add -CSK suffix for clamshell retail packaging.

ELBOWS



MGHTxHB	Bag Qty.	Nylon	PolyPro
3/4 x 1/4	25	ELD3414	3ELD3414
3/4 x 3/8	25	ELD3438	3ELD3438
3/4 x 1/2	25	ELD3412	3ELD3412
3/4 x 5/8	25	ELD3458	3ELD3458
3/4 x 3/4	25	ELD34	3ELD34

FITTINGS



FPTxHB	Bag Qty.	Nylon	PolyPro
1/4 x 1/4	50	Q14	3Q14
1/2 x 1/2	25	Q12	3Q12

ELBOWS



HBxHB	Bag Qty.	Nylon	PolyPro
1/4 x 1/4	50	EL14HB	3EL14HB
3/8 x 1/4	50	EL3814HB	3EL3814HB
3/8 x 3/8	50	EL38HB	3EL38HB
1/2 x 1/4	50	EL1214HB	3EL1214HB
1/2 x 3/8	50	EL1238HB	3EL1238HB
1/2 x 1/2	50	EL12HB**	3EL12HB
5/8 x 5/8	25	EL58HB	3EL58HB
3/4 x 5/8	25	EL3458HB	3EL3458HB
3/4 x 3/4	25	EL34HB	3EL34HB
1 x 1	25	EL100HB	3EL100HB

**Add -CSK suffix for clamshell retail packaging.

FLAT SEAT HOSE BARB



HB	Bag Qty.	Nylon	PolyPro
1/4	25	C14	3C14
3/8	25	C38**	3C38
1/2	25	C12	3C12
5/8	25	C58	3C58
3/4	25	C34	3C34
1	25	C100	3C100

**Add -CSK suffix for clamshell retail packaging.

TEES



FPTxHB	Bag Qty.	Nylon	PolyPro
3/4 x 3/4	25	T34F	3T34F

Sold in full bag quantities only

ADAPTERS

FLUID COMPONENTS

SPRAYER ACCESSORIES

COMMERCIAL & INDUSTRIAL PUMPS

AGRICULTURAL COMPONENTS

PRESSURE WASHER ACCESSORIES

POWER EQUIPMENT

ADAPTERS



MGHTxMPT	Bag Qty.	Nylon	PolyPro
3/4 x 3/8	25	E3438	3E3438
3/4 x 1/2	25	E3412**	3E3412
3/4 x 3/4	25	E34**	3E34

**Add -CSK suffix for clamshell retail packaging.

ADAPTER COUPLINGS



FGHTxMPT	Bag Qty.	Nylon	PolyPro
3/4 x 1/2	25	J3412**	3J3412

**Add -CSK suffix for clamshell retail packaging.

ADAPTERS



MGHTxFGHT	Bag Qty.	Nylon	PolyPro
3/4 x 3/4	25	I34	3I34

CAPS



FGHT	Bag Qty.	Nylon	PolyPro
3/4	25	N34	3N34

ADAPTERS



MGHTxFPT	Bag Qty.	Nylon	PolyPro
3/4 x 1/4	25	G3414	3G3414
3/4 x 1/2	25	G3412	3G3412
3/4 x 3/4	25	G34	3G34

ADAPTERS



FGHTxMPT	Bag Qty.	Nylon	PolyPro
3/4 x 3/4	25	H34	3H34



THREADED NOZZLE FITTINGS

Sold in full bag quantities only

STRAIGHT SWIVEL NUT



FGHT	Bag Qty.	Nylon	PolyPro
3/4	25	B34**	3B34

**Add -CSK suffix for clamshell retail packaging.

NOZZLE RETAINING NUT



FPS	Bag Qty.	Nylon	PolyPro
1/16	25	B12	3B12

ELBOWS



MPSxHB	Bag Qty.	Nylon	PolyPro
1/16 x 1/4	50	NTL14	3NTL14
1/16 x 3/8	50	NTL38	3NTL38
1/16 x 3/8	50	NTL38-C	3NTL38-C
1/16 x 1/2	50	NTL12	3NTL12
1/16 x 1/2	50	NTL12-C	3NTL12-C
1/16 x 5/8	25	NTL58	3NTL58
1/16 x 3/4	25	NTL34	3NTL34

Hose barb with nozzle thread "L" standard nozzle body. Includes B12 Nut (Except -C Models)

TEES



MPSxHB	Bag Qty.	Nylon	PolyPro
1/16 x 3/8	50	NTT38	3NTT38
1/16 x 3/8	50	NTT38-C	3NTT38-C
1/16 x 1/2	50	NTT12	3NTT12
1/16 x 1/2	50	NTT12-C	3NTT12-C
1/16 x 5/8	50	NTT58	3NTT58
1/16 x 3/4	25	NTT34	3NTT34
1/16 x 3/4	25	NTT34-C	3NTT34-C

Hose barb with nozzle thread "T" standard nozzle body. Includes B12 Nut (Except -C Models)

HOSE BARB FOR 8027 NUT



HB	Bag Qty.	Nylon	PolyPro
1/4	25	K8414	3K8414
3/8	25	K8438	3K8438
1/2	25	K8412	3K8412

STRAIGHT HB WITH NOZZLE THREAD



MPSxHB	Bag Qty.	Nylon	PolyPro
1/16 x 3/8	50	38D	338D
1/16 x 3/8	50	38D-C	338D-C
1/16 x 1/2	50	3812D	33812D
1/16 x 1/2	50	3812D-C	33812D-C

Includes B12 Nut (Except -C Models)

Sold in full bag quantities only

THREADED NOZZLE FITTINGS

FLUID COMPONENTS

SPRAYER ACCESSORIES

COMMERCIAL & INDUSTRIAL PUMPS

AGRICULTURAL COMPONENTS

PRESSURE WASHER ACCESSORIES

POWER EQUIPMENT

NOZZLE NUT



FPS	Bag Qty.	Nylon	PolyPro
1/16	25	8027**	38027

**Add -CSK suffix for clamshell retail packaging.

NIPPLE



MPSxMPT	Bag Qty.	Nylon	PolyPro
1/16 x 1/4	50	NB1614	3NB1614**
1/16 x 1/2	50	NB1612	3NB1612

**Add -CSK suffix for clamshell retail packaging.

CROSS 1/4" GAUGE PORT



Gauge Port x FNPT	Bag Qty.	Black Nylon
1/2 x 1/4	25	GCR1214-BN

CROSSES



MPSxHB	Bag Qty.	Nylon	PolyPro
1/16 x 3/8	50	T38C	3T38C
1/16 x 1/2	50	T12C	3T12C
1/16 x 3/4	50	T34C	3T34C

Includes B12 Nut

SPRAY TIP ADAPTER



FPS x FPT	Bag Qty.	Nylon	PolyPro
1/16 x 1/4	25	NF1614	3NF1614**

**Add -CSK suffix for clamshell retail packaging.
Female spray tip adaptor

NOZZLE CAP



FPS	Bag Qty.	Nylon	PolyPro
1/16	25	3942	33942



CAMLOCKS

CAM LOCKS

Valley Industries Polypropylene Camlocks allow you to quickly connect and disconnect fittings on pipes or hoses and are available in a wide variety of sizes and styles. Each camlock listed below is barcoded for retail sale.

TYPE "A" CAMLOCK



Size	PolyPro
1"	CL-A-100P-BC
1½"	CL-A-150P-BC
2"	CL-A-200P-BC
3"	CL-A-300P-BC

Includes a male grooved adapter and a female pipe thread.

TYPE "B" CAMLOCK



Size	PolyPro
¾"	CL-B-075P-BC
1½"	CL-B-150P-BC
2"	CL-B-200P-BC
3"	CL-B-300P-BC

Includes a female camlock and a male pipe thread.

TYPE "C" CAMLOCK



Size	PolyPro
1"	CL-C-100P-BC
1½"	CL-C-150P-BC
2"	CL-C-200P-BC
3"	CL-C-300P-BC

Includes a female camlock and a male hose barb.

TYPE "D" CAMLOCK



Size	PolyPro
1"	CL-D-100P-BC
1½"	CL-D-150P-BC
2"	CL-D-200P-BC

Includes a female camlock and a female pipe thread.

TYPE "E" CAMLOCK



Size	PolyPro
¾"	CL-E-075P-BC
1"	CL-E-100P-BC
1½"	CL-E-150P-BC
2"	CL-E-200P-BC

Includes a male grooved adaptor and a male hose barb.

TYPE "F" CAMLOCK



Size	PolyPro
1"	CL-F-100P-BC
1½"	CL-F-150P-BC
2"	CL-F-200P-BC
3"	CL-F-300P-BC

Includes a male grooved adaptor and a male pipe thread.

CAMLOCK CAP



Size	PolyPro
2"	CL-CP-200P-BC

CAMLOCK PLUG



Size	PolyPro
1½"	CL-PL-150P-BC
2"	CL-PL-200P-BC

KING COMBINATION NIPPLES

KING COMBINATION NIPPLES

King Combination Nipples are hose nipples made from tubular stock, to fit straight end hose. The threaded end, in all styles (except "Jump Sizes"), has a male NPT thread the same size as the hose shank; i.e. a 2" nipple has 2" threads and fits a 2" ID hose. King Combination Nipples are recommended for low pressure discharge and suction service.

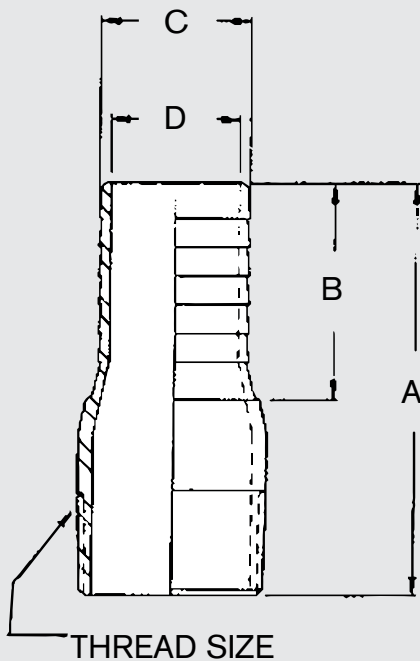
The working pressure of combination nipples varies with the size of the nipple, the size and construction of the hose and the type of clamping system used; consult our Customer Service Department for recommendations.

NOT INTENDED FOR COMPRESSED AIR

KING COMBINATION NIPPLES

Plated Steel

MPT x HB	Part#
3/4" x 3/4"	KC-75
1" x 1"	KC-100
1 1/2" x 1 1/2"	KC-150
2" x 2"	KC-200
3" x 3"	KC-300



Part#	A	B	C	D	Thread
KC-75	3-1/8	1-19/32	25/32	19/32	3/4" MPT
KC-100	3-1/2	1-19/32	1-1/32	53/64	1" MPT
KC-150	4-1/8	2-3/16	1-17/32	2-3/16	1 1/2" MPT
KC-200	4-11/16	2-7/16	2-1/32	1-3/4	2" MPT
KC-300	6-1/8	3-1/4	3-1/32	3-21/32	3" MPT



STAINLESS STEEL FITTINGS

APPLICATIONS & NUMBERING

Our stainless steel fittings and pipe nipples are made from 304 or 316 stainless steel. Use with air, water, oil, natural gas, and steam. Maximum pressure 150 PSI at 72°F.

'304' part number prefix designated 304 stainless steel.
'316' part number prefix designated 316 stainless steel.

ABBREVIATIONS

MPS	Male Pipe Straight
FPS	Female Pipe Straight
HB	Hose Bard
MNPT	Male National Pipe Thread
MGHT	Male Garden Hose Thread
FGHT	Female Garden Hose Thread
NPT	National Pipe Thread
FPT	Female National Pipe Thread
FBSP	Female British Straight Pipe

CAPS



FPT	Part#
1/8	304-CP18
1/4	304-CP14
3/8	304-CP38
1/2	304-CP12
3/4	304-CP34
1	304-CP100
1 1/4	304-CP114
1 1/2	304-CP112
2	304-CP200
3	304-CP300
4	304-CP400

CROSSES



FPT	Part#
1/8	304-CR18
1/4	304-CR14
3/8	304-CR38
1/2	304-CR12
3/4	304-CR34
1	304-CR100
1 1/4	304-CR114
1 1/2	304-CR112
2	304-CR200
3	304-CR300
4	304-CR400

FITTINGS



NPT x HB	Part#
1/4 x 1/4	316-A14
1/4 x 3/8	316-A1438
1/4 x 1/2	316-A1412
3/8 x 3/8	316-A38
3/8 x 1/2	316-A3812
1/2 x 1/2	316-A12
1/2 x 3/8	316-A1238
1/2 x 3/4	316-A1234
3/4 x 3/4	316-A34
3/4 x 1	316-A34100
1 x 1	316-A100
1 1/4 x 1 1/4	316-A114
1 1/2 x 1 1/2	316-A112
2 x 2	316-A200
3 x 3	316-A300
4 x 4	316-A400

STAINLESS STEEL FITTINGS

COUPLINGS



FPT x FPT	Part#
1/8 x 1/8	304-FC18
1/4 x 1/4	304-FC14
3/8 x 3/8	304-FC38
1/2 x 1/2	304-FC12
3/4 x 3/4	304-FC34
1 x 1	304-FC100
1 1/4 x 1 1/4	304-FC114
1 1/2 x 1 1/2	304-FC112
2 x 2	304-FC200
3 x 3	304-FC300
4 x 4	304-FC400
1/4 x 1/4 Half Coupling	304-FHC14
1 x 1 Half Coupling	304-FHC100

ELBOWS 90°



FPT x FPT	Part#
1/8 x 1/8	304-LL18
1/4 x 1/4	304-LL14
3/8 x 3/8	304-LL38
1/2 x 1/2	304-LL12
3/4 x 3/4	304-LL34
1 x 1	304-LL100
1 1/4 x 1 1/4	304-LL114
1 1/2 x 1 1/2	304-LL112
2 x 2	304-LL200
3 x 3	304-LL300
4 x 4	304-LL400

HEX PLUGS



MPT	Part#
1/8	304-F18
1/4	304-F14
3/8	304-F38
1/2	304-F12
3/4	304-F34
1	304-F100
1 1/4	304-F114
1 1/2	304-F112
2	304-F200
3	304-F300
4	304-F400

REDUCER BUSHINGS



MPT x FPT	Part#
1/4 x 1/8	304-RB1418
3/8 x 1/4	304-RB3814
1/2 x 1/8	304-RB1218
1/2 x 1/4	304-RB1214
1/2 x 3/8	304-RB1238
3/4 x 1/4	304-RB3414
3/4 x 3/8	304-RB3438
3/4 x 1/2	304-RB3412
1 x 1/2	304-RB10012
1 x 3/4	304-RB10034
1 1/4 x 3/4	304-RB11434
1 1/4 x 1	304-RB114100
1 1/2 x 3/4	304-RB11234
1 1/2 x 1	304-RB112100
1 1/2 x 1 1/4	304-RB112114
2 x 1	304-RB200100
2 x 1 1/4	304-RB200114
2 x 1 1/2	304-RB200112
3 x 2	304-RB300200
4 x 3	304-RB400300

ELBOWS 45°



FPT x FPT	Part#
1/8 x 1/8	304-LL185
1/4 x 1/4	304-LL145
3/8 x 3/8	304-LL385
1/2 x 1/2	304-LL125
3/4 x 3/4	304-LL345
1 x 1	304-LL1005
1 1/4 x 1 1/4	304-LL1145
1 1/2 x 1 1/2	304-LL1125
2 x 2	304-LL2005
3 x 3	304-LL3005
4 x 4	304-LL4005

STREET ELBOW



FPT x NPT	Part#
1/8 x 1/8	304-SE18
1/4 x 1/4	304-SE14
3/8 x 3/8	304-SE38
1/2 x 1/2	304-SE12
3/4 x 3/4	304-SE34
1 x 1	304-SE100
1 1/4 x 1 1/4	304-SE114
1 1/2 x 1 1/2	304-SE112
2 x 2	304-SE200
3 x 3	304-SE300
4 x 4	304-SE400



STAINLESS STEEL FITTINGS

SQUARE HEAD PLUGS



MPT	Part#
1/8	304-SP18
1/4	304-SP14
3/8	304-SP38
1/2	304-SP12
3/4	304-SP34
1	304-SP100
1 1/4	304-SP114
1 1/2	304-SP112
2	304-SP200
3	304-SP300
4	304-SP400

TEES



FPT x FPT	Part#
1/8	304-TT18
1/4	304-TT14
3/8	304-TT38
1/2	304-TT12
3/4	304-TT34
1	304-TT100
1 1/4	304-TT114
1 1/2	304-TT112
2	304-TT200
3	304-TT300
4	304-TT400

UNIONS



FPT x FPT	Part#
1/8	304-UN18
1/4	304-UN14
3/8	304-UN38
1/2	304-UN12
3/4	304-UN34
1	304-UN100
1 1/4	304-UN114
1 1/2	304-UN112
2	304-UN200
3	304-UN300
4	304-UN400

NIPPLE

MPT	Part#
1/8 x 3/4	304-1834
1/8 x 1 1/2	304-18112
1/8 x 2	304-18200
1/8 x 2 1/2	304-18212
1/8 x 3	304-18300
1/8 x 3 1/2	304-18312
1/8 x 4	304-18400
1/8 x 5	304-18500
1/8 x 6	304-18600
1/4 x 7/8	304-1478
1/4 x 1 1/2	304-14112
1/4 x 2	304-14200
1/4 x 2 1/2	304-14212
1/4 x 3	304-14300
1/4 x 3 1/2	304-14312
1/4 x 4	304-14400
1/4 x 5	304-14500
1/4 x 6	304-14600
1/4 x 8	304-14800
1/4 x 12	304-141200
3/8 x 1	304-38100
3/8 x 1 1/2	304-38112
3/8 x 2	304-38200
3/8 x 2 1/2	304-38212
3/8 x 3	304-38300
3/8 x 3 1/2	304-38312
3/8 x 4	304-38400
3/8 x 5	304-38500
3/8 x 6	304-38600
3/8 x 7	304-38700

NIPPLE (cont)

MPT	Part#
1/2 x 1 1/8	304-12118
1/2 x 1 1/2	304-12112
1/2 x 2	304-12200
1/2 x 2 1/2	304-12212
1/2 x 3	304-12300
1/2 x 3 1/2	304-12312
1/2 x 4	304-12400
1/2 x 5	304-12500
1/2 x 6	304-12600
3/4 x 1 3/8	304-34138
3/4 x 1 1/2	304-34112
3/4 x 2	304-34200
3/4 x 2 1/2	304-34212
3/4 x 3	304-34300
3/4 x 3 1/2	304-34312
3/4 x 4	304-34400
3/4 x 5	304-34500
3/4 x 6	304-34600
1 x 1 1/2	304-100112
1 x 2	304-100200
1 x 2 1/2	304-100212
1 x 3	304-100300
1 x 3 1/2	304-100312
1 x 4	304-100400
1 x 5	304-100500
1 x 6	304-100600
1 1/4 x 1 5/8	304-114158
1 1/4 x 2	304-114200
1 1/4 x 2 1/2	304-114212
1 1/4 x 3	304-114300

NIPPLE (cont)

MPT	Part#
1 1/4 x 3 1/2	304-114312
1 1/4 x 4	304-114400
1 1/4 x 5	304-114500
1 1/4 x 6	304-114600
1 1/2 x 1 3/4	304-112134
1 1/2 x 2	304-112200
1 1/2 x 2 1/2	304-112212
1 1/2 x 3	304-112300
1 1/2 x 3 1/2	304-112312
1 1/2 x 4	304-112400
1 1/2 x 5	304-112500
1 1/2 x 6	304-112600
2 x 2	304-200200
2 x 2 1/2	304-200212
2 x 3	304-200300
2 x 3 1/2	304-200312
2 x 4	304-200400
2 x 5	304-200500
2 x 6	304-200600
3 x 2 5/8	304-300258
3 x 3	304-300300
3 x 3 1/2	304-300312
3 x 4	304-300400
3 x 5	304-300500
3 x 6	304-300600
4 x 2 7/8	304-400278
4 x 4	304-400400
4 x 5	304-400500
4 x 6	304-400600



Other nipple lengths available. Call for details.

BRASS FITTINGS

FLUID COMPONENTS

SPRAYER ACCESSORIES

COMMERCIAL & INDUSTRIAL PUMPS

AGRICULTURAL COMPONENTS

PRESSURE WASHER ACCESSORIES

POWER EQUIPMENT

APPLICATIONS

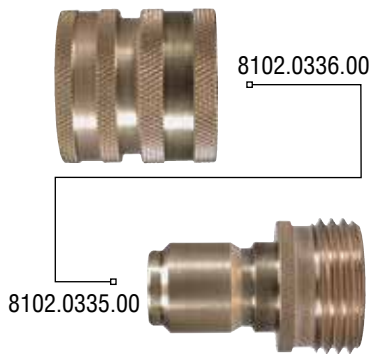
Our brass fittings are acceptable for most water uses and for most petroleum applications such as gasoline and diesel fuel. Depending on the design, brass fittings are usually acceptable for use at relatively high pressure (500 PSI) and at temperatures up to 800° F.

Brass fittings are not acceptable for use with nitrogen compounds.

ABBREVIATIONS

MPS	Male Pipe Straight
FPS	Female Pipe Straight
HB	Hose Bard
MNPT	Male National Pipe Thread
MGHT	Male Garden Hose Thread
FGHT	Female Garden Hose Thread
NPT	National Pipe Thread
FPT	Female National Pipe Thread
FBSP	Female British Straight Pipe

GARDEN HOSE QC



Size	Part#
¾ FGHT x Q/C. <i>Use with 900.137</i>	8102.0336.00
¾ MGHT x Q/C. <i>Use with 900.138</i>	8102.0335.00

HEX GARDEN HOSE NIPPLE



Size	Part#
¾ MPT x ¾ MGHT	900.018

HEX GARDEN HOSE NIPPLE



Size	Part#
¾ MGHT x ¾ MGHT	900.023

MALE HOSE BARBS



Size	Part#
MGHT x ⅜ HB x 2"	900.019
MGHT x ½ HB x 2"	900.047

HOSE BARB SWIVELS



Size	Part#
½ FBSP x ⅜ HB	604.2A
½ FBSP x ½ HB	604.3A

90° NOZZLE BODY ELBOWS



Size	Part#
⅜ HB x 1/16 MPS	901.038
½ HB x 1/16 MPS	900.052

HOSE BARB SWIVELS



Size	Part#
FGHT x ½ HB x 2"	900.021
FGHT x ¾ HB x 2"	900.034
FGHT x ⅜ HB x 2"	900.046

ADJUSTABLE NOZZLES



Size	Part#
1/16 FPS, #8	900.040-8
1/16 FPS, #18	900.040-18
¼ NPT #18	900.054-18
¼ NPT #8	900.054-8
¼ NPT #24	900.054-24M

GARDEN HOSE ADAPTERS



Size	Part#
¾ FGHT x ⅜ MNPT	300.119
¾ FGHT x ½ MNPT	300.120
¾ FGHT x ½ FNPT	300.129



BRASS FITTINGS

FEMALE NOZZLE BODIES



Size	Part#
1/4 FNPT x 1/16 FPS	900.029
1/4 FNPT x 1/16 MPS	900.031

NOZZLE BODY TEES



Size	Part#
3/8 HB x 1/16 MPS	902.038
1/2 HB x 1/16 MPS	900.053

NOZZLE BODY CAPS



Size	Part#
1/16 FPS (short)	900.002
1/16 FPS (short) 4-Pk	900.002-CSK
1/16 FPS (deep)	900.006

MALE NOZZLE BODIES



Size	Part#
1/4 MNPT x 1/16 MPS	900.001*

*Also Available in Stainless Steel

NOZZLE BLANK



Part#
900.016
900.016-CSK

Nozzle Body Block-Off Plate

NOZZLE BODY SWIVEL



Size	Part#
1/4 FNPT x 1/16 MPS	900.004

Double Nozzle

NOZZLE BODY SWIVEL



Size	Part#
1/4 FNPT x 1/16 MPS	900.003

Single Nozzle

NOZZLE BODY SWIVEL



Size	Part#
1/4 MNPT x 1/16 MPS	900.049

FILTER SCREEN



Size	Part#
Brass Filter Screen	900.009

NOZZLE BODY SWIVEL



Size	Part#
1/4 MNPT x 1/16 MPS	900.050

Double Nozzle

NOZZLE BALL VALVES



Size	Part#
1/4" FNPT x 1/16" MPS	BBVL-23220
1/4" MNPT x 1/16" MPS	91.900.156

BALL VALVES

FLUID COMPONENTS

SPRAYER ACCESSORIES

COMMERCIAL & INDUSTRIAL PUMPS

AGRICULTURAL COMPONENTS

PRESSURE WASHER ACCESSORIES

POWER EQUIPMENT

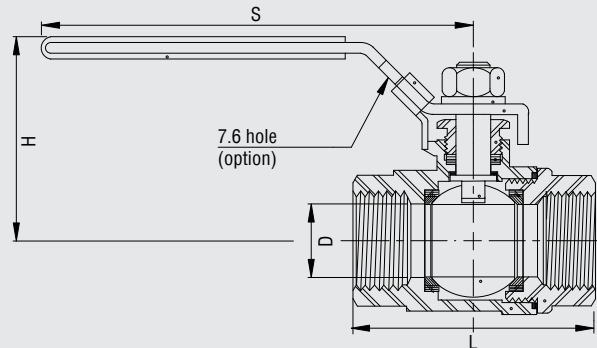
86 SERIES BALL VALVE

2 Piece, 2000 PSI Ball Valve
Standard Port 316 Stainless Steel Heavy Wall

FPT	Part#	D	L	S	H
¼	86-14	0.374	2.047	4.114	2.028
⅜	86-38	0.374	2.047	4.114	2.028
½	86-12	0.500	2.539	4.114	2.008
¾	86-34	0.590	2.697	5.020	2.106
1	86-100	0.787	3.248	5.020	2.283
1¼	86-114	0.984	3.681	6.575	2.874
1½	86-112	1.260	4.350	6.575	3.150
2	86-200	1.500	4.622	7.600	3.327

FEATURES

- Investment cast body and cap.
- Teflon® seals and seats for smooth operation and proper seating characteristics.
- 2000 PSI Rating (W.O.G.).
- 60° to 450° F operating temperature.
- Adjustable stem packing.
- Blow-out proof stem and ball are made of 316 stainless steel.
- Locking device on handle.



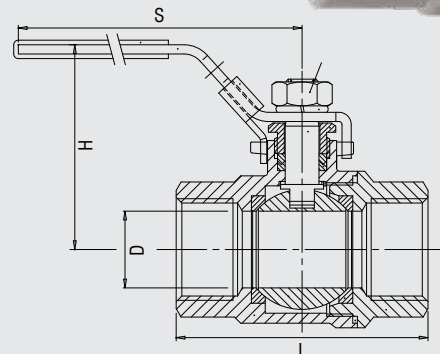
88 SERIES BALL VALVE

2 Piece, 1000 PSI Ball Valve
Full Port 316 Stainless Steel

FPT	Part#	D	L	S	H
¼	88-14	0.456	1.831	4.094	1.890
⅜	88-38	0.456	1.890	4.094	1.890
½	88-12	0.562	2.520	4.094	2.047
¾	88-34	0.787	2.913	4.843	2.402
1	88-100	0.984	3.425	4.843	2.559
1¼	88-114	1.260	3.976	6.063	3.150
1½	88-112	1.496	4.331	6.063	3.307
2	88-200	1.969	5.197	7.441	3.819
2½	88-212	2.520	5.710	9.606	5.354
3	88-300	2.992	7.362	9.606	5.709

FEATURES

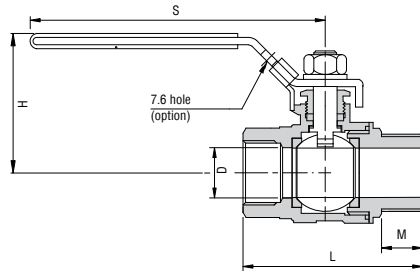
- Investment cast body and cap.
- Teflon® seals and seats for smooth operation and proper seating characteristics.
- 1000 PSI rating (W.O.G.).
- 60° to 450° F operating temperature.
- Adjustable stem packing.
- Blow-out proof stem and ball are made of 316 stainless steel.
- Locking device on handle.





BALL VALVES

BRASS BALL VALVES



Ball Valve, Full Port, Brass

FPT	Part#	D	L	S	H
¼	BBV-14	0.39	2.02	3.85	1.75
⅜	BBV-38	0.39	2.02	3.85	1.75
½	BBV-12	0.59	2.44	3.85	1.88
¾	BBV-34	0.78	2.71	4.80	2.28
1	BBV-100	0.98	3.07	4.80	2.44
1¼	BBV-114	1.25	3.42	6.02	3.07
1½	BBV-112	1.57	3.89	6.02	3.34
2	BBV-200	1.96	4.43	6.37	3.79
2½	BBV-212	2.50	5.31	7.38	4.06
3	BBV-300	3.00	6.06	7.75	4.50

Features

Investment cast body and cap.
 Teflon® seals and seats for smooth operation and proper seating characteristics.
 600 PSI rating (W.O.G.) 100 PSI steam.
 -40° to 366° F operating temperature.
 Adjustable stem packing.
 Blow-out proof stem.
 Chrome plated brass ball.

BRASS BALL VALVE, BUTTERFLY HANDLE



Brass Ball Valve, Standard Port

Inlet/Outlet	Part#
¼ FNPT x ¼ FNPT	85-14B

FEATURES

Investment cast body and cap.
 Teflon® seals and seats for smooth operation and proper seating characteristics.
 1000 PSI rating (W.O.G.).
 -60° to 450° F operating temperature.
 Adjustable stem packing.
 316 Stainless Steel blow-out proof stem & ball.
 Non-locking handle.
 1.5" overall length.
 One piece body.

ECONOMY BALL VALVES



Inlet/Outlet	Part#
⅛ FNPT x FNPT	MVL18FF
¼ FNPT x FNPT	MVL14FF
⅜ FNPT x FNPT	MVL38FF
½ FNPT x FNPT	MVL12FF

FEATURES

Female Inlet & Outlet
 Nylon Lever Handled
 200 PSI rating (CWP).
 -4° to 250° F temp. rating.
 Chromed brass body, ball & stem.
 Teflon® seat and Viton® seals.

ECONOMY BALL VALVES



Inlet/Outlet	Part#
⅛ FNPT x MNPT	MVL18FM
¼ FNPT x MNPT	MVL14FM
⅜ FNPT x MNPT	MVL38FM
½ FNPT x MNPT	MVL12FM

FEATURES

Female Inlet & Male Outlet
 Nylon Lever Handled
 200 PSI rating (CWP).
 -4° to 250° F temp. rating.
 Chromed brass body, ball & stem.
 Teflon® seat and Viton® seals.

ECONOMY BALL VALVES



Inlet/Outlet	Part#
⅛ FNPT x FNPT	MVT18FF
¼ FNPT x FNPT	MVT14FF
⅜ FNPT x FNPT	MVT38FF
½ FNPT x FNPT	MVT12FF

FEATURES

Female Inlet & Outlet
 Butterfly T-Handle
 200 PSI rating (CWP).
 -4° to 250° F temp. rating.
 Chromed brass body, ball & stem.
 Teflon® seat and Viton® seals.

ECONOMY BALL VALVES



Inlet/Outlet	Part#
⅛ FNPT x MNPT	MVT18FM
¼ FNPT x MNPT	MVT14FM
⅜ FNPT x MNPT	MVT38FM
½ FNPT x MNPT	MVT12FM

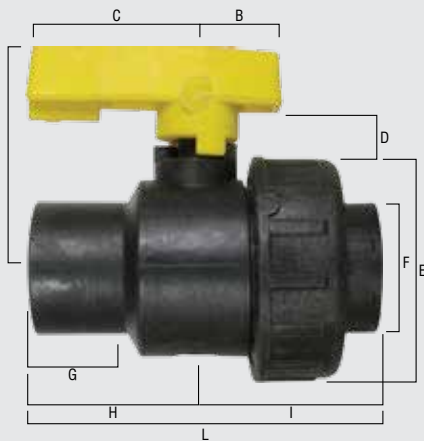
FEATURES

Female Inlet & Male Outlet
 Butterfly T-Handle
 200 PSI rating (CWP).
 -4° to 250° F temp. rating.
 Chromed brass body, ball & stem.
 Teflon® seat and Viton® seals.

BALL VALVES

2-WAY POLYPROPYLENE BALL VALVE

FPT	Part#	A	B	C	D	E	F (NPT)	G	H	I	L
3/8	PBV2-38	2.36	1.65	1.65	0.63	2.32	3/8	0.91	1.71	1.75	3.46
1/2	PBV2-12	2.36	1.65	1.65	0.63	2.32	1/2	0.91	1.71	1.75	3.46
3/4	PBV2-34	2.36	1.65	1.65	0.63	2.32	3/4	0.91	1.71	1.75	3.46
1	PBV2-100	2.87	1.65	2.09	0.79	2.72	1	0.91	1.83	2.05	3.88
1 1/4	PBV2-114	3.15	1.65	3.03	0.79	3.23	1 1/4	0.98	2.11	2.17	4.27
1 1/2	PBV2-112	3.42	1.93	3.15	0.79	3.90	2 1/2	1.10	2.46	2.50	4.96
2	PBV2-200	4.33	1.93	5.12	0.79	4.53	2	1.18	2.87	2.97	5.85
2 1/2	PBV2-212	4.84	1.77	3.54	0.98	5.71	2 1/2	1.73	4.06	4.29	8.35



Features

Precision molded in glass reinforced polypropylene for strength and chemical resistance.

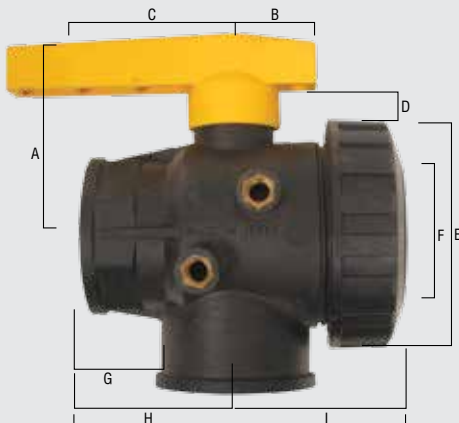
Teflon® seats for smooth operation and proper sealing characteristics. EPDM o-rings to handle most fertilizers and many chemicals. Viton® available on request.

Positive handle stops for turning off and on.

Maximum operating pressure 240 PSI for sizes up to 2", 150 PSI for sizes over 2".

3-WAY POLYPROPYLENE BALL VALVE

FPT	Part#	A	B	C	D	E	F (NPT)	G	H	I	L
1/2	PBV3-12	2.36	1.65	1.65	0.62	2.32	1/2	0.90	1.71	1.75	3.46
3/4	PBV3-34	2.36	1.65	1.65	0.62	2.32	3/4	0.90	1.71	1.75	3.46
1	PBV3-100	2.87	1.65	2.09	0.79	2.72	1	0.91	1.83	2.05	3.88
1	PBV3-100CF	2.87	1.65	2.09	0.79	2.72	1	0.91	1.83	2.05	3.88
1 1/4	PBV3-114	3.15	1.65	3.03	0.79	3.23	1 1/4	0.98	2.11	2.17	4.27
1 1/2	PBV3-112	3.42	1.93	3.15	0.79	3.90	1 1/2	1.10	2.46	2.50	4.96
1 1/2	PBV3-112CF	3.42	1.93	3.15	0.79	3.90	1 1/2	1.10	2.46	2.50	4.96
2	PBV3-200	4.33	1.93	5.12	0.79	4.53	2	1.18	2.87	2.97	5.85



FEATURES

Precision molded in glass reinforced polypropylene for strength and chemical resistance.

Teflon® seats for smooth operation and proper sealing characteristics. EPDM o-rings to handle most fertilizers and many chemicals. Viton® available on request.

Positive handle stops for turning off and on.

Maximum operating pressure 240 PSI for sizes up to 2", 150 PSI for sizes over 2".

CF notation in the part number stands for Continuous Flow.



BALL VALVES

POLYPROPYLENE VALVE



Part#	Size
PBV-38HB12	1/2" Male NPT x 3/8" HB 150 PSI Max
PBV-38HB12-CSK	Same as above w/clamshell packaging

POLYPROPYLENE VALVE



Part#	Size
PBV-38HB	3/8" HB x 3/8" HB 150 PSI Max
PBV-38HB-CSK	Same as above w/clamshell packaging

BOLTED BALL VALVES



Part#	Size
BLTBV-204-BC	2" 4 Bolted Ball Valve
BLTBV-206-BC	2" 6 Bolted Ball Valve
BLTBV-300-BC	3" Bolted Ball Valve
Other Sizes Available. Call For Details.	

ZINC PLATED BALL VALVES



Part#	Size
8109.2601.00	1/4" FPT x 1/4" F, 2.64 GPM
8109.2602.00	3/8" FPT x 3/8" F, 6.60 GPM
8109.2603.00	1/2" FPT x 1/2" F, 10.57 GPM

FEATURES
 7400 PSI industrial Duty
 Chrome Plated Steel Ball
 Zinc Plated Steel Body
 Max temp. 212 deg F

TWO-WAY BALL VALVES



Part#	Size
8402.2611.00	1 1/4" Two-Way Ball Valve
8402.2612.00	1 1/2" Two-Way Ball Valve

FEATURES
 Operating Temp 212 °F
 Material Zinc Plated Steel
 PSI Rating 5000 Max
 Handle Type Steel, Bent

THREE-WAY BALL VALVES



Part#	Size
8402.2622.00	1 1/4" Three-Way Ball Valve
8402.2628.00	1 1/2" Three-Way Ball Valve
8402.2629.00	2" Three-Way Ball Valve

FEATURES
 Operating Temp 212 °F
 Material Zinc Plated Steel
 PSI Rating 5000 Max
 Handle Type Steel, Bent

CLAMPS & SEALANT

T-BOLT CLAMPS



PURPOSE

To provide a quick, yet effective means of clamping a variety of fittings to a wide range of hose. T-Bolts can be applied with a standard socket wrench. They provide 360° sealing surface by using a shoe or formed bridge.

Part#	Nominal	From	To
TB-840150	1-1/2"	1-3/8"	1-9/16"
TB-840175	1-3/4"	1-5/8"	1-13/16"
TB-840200	2"	1-7/8"	2-1/16"
TB-840225	2-1/4"	2-1/8"	2-5/16"
TB-840238	2-3/8"	2-1/4"	2-7/16"
TB-840250	2-1/2"	2-3/8"	2-9/16"
TB-840275	2-3/4"	2-17/32"	2-13/16"
TB-840300	3"	2-25/32"	3-1/16"
TB-840325	3-1/4"	3-1/32"	3-5/16"
TB-840350	3-1/2"	3-9/32"	3-9/16"
TB-840375	3-3/4"	3-17/32"	3-16/16"
TB-840425	4-1/4"	4-1/32"	4-5/16"
TB-840450	4-1/2"	4-9/32"	4-9/16"
TB-840475	4-3/4"	4-17/32"	4-13/16"

FEATURES

0.025" band thickness
 3/4" wide band
 300 series stainless steel band, bolt and nut material
 Self locking nuts
 75 in/lb torque rating

SERVICES

The T-Bolt clamp is a high strength, reliable clamp with numerous applications in both the commercial and industrial markets including hose and duct work connections for air, oil, water and other types of low pressure fluid lines.

PIPE CLAMP



Part#	Pipe ID
CPC-075	3/4"
CPC-100	1"

Use with Schedule 80 Polypropylene pipe.

ANCHOR BRACKET



Part#	Description
TD-150	1.5" Tie down
TD-200	2" Tie down
Tank tie down strap, anchor bracket 2"	

PIPE SEALANT



Part#	Size
25790	#5 Rectorseal, 1.75 oz. tube
25631	#5 Rectorseal, 1/4 pint can
25551	#5 Rectorseal, 1/2 pint can
25431	#5 Rectorseal, 1 pint can
28651	# 21 black jack, 1/2 pint can
28541	# 21 black jack, 1 pint can

TEFLON TAPE



Part#	Width/Length	#/box
12-60	1/2" by 60"	100
12-260	1/2" by 260"	100
12-520	1/2" by 520"	100
34-520	3/4" by 520"	100

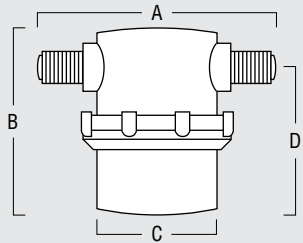


LINE STRAINERS



LOW PROFILE NYLON MPT LINE STRAINERS							
Nylon Bowl				Clear Bowl			
Part#	Size	Gasket	Mesh	Part#	Size	Gasket	Mesh
14644	1/4"	EPDM	20	14656	1/4"	EPDM	20
11474	1/4"	EPDM	40	11633	1/4"	EPDM	40
12992	1/4"	EPDM	80	11469	1/4"	EPDM	80
17933	1/4"	Viton	20	10910	1/4"	Viton	20
11215	1/4"	Viton	40	10911*	1/4"	Viton	40
11043	1/4"	Viton	80	10912*	1/4"	Viton	80
17934	1/2"	EPDM	20	12379	1/2"	EPDM	20
12546	1/2"	EPDM	40	11434	1/2"	EPDM	40
12815	1/2"	EPDM	80	13090	1/2"	EPDM	80
11109	1/2"	Viton	20	10924	1/2"	Viton	20
12171	1/2"	Viton	40	10925	1/2"	Viton	40
10923	1/2"	Viton	80	10981	1/2"	Viton	80

*Available with FPT Connections

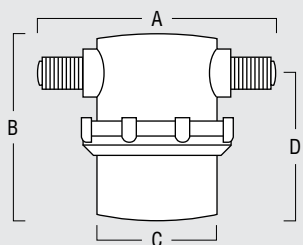


Dimensions	
A	3.06"
B	2.42"
C	1.86"
D	1.98"
Filter Area	4.27 sq"



LOW PROFILE POLYPROPYLENE MPT LINE STRAINERS							
Polypropylene Bowl				Clear Bowl			
Part#	Size	Gasket	Mesh	Part#	Size	Gasket	Mesh
17912	1/4"	EPDM	20	14628	1/4"	EPDM	20
11642	1/4"	EPDM	40	14629	1/4"	EPDM	40
14591	1/4"	EPDM	80	14630	1/4"	EPDM	80
17913	1/4"	Viton	20	17916	1/4"	Viton	20
13914	1/4"	Viton	40	12326	1/4"	Viton	40
13915	1/4"	Viton	80	12678	1/4"	Viton	80
17917	1/2"	EPDM	20	14637	1/2"	EPDM	20
17918	1/2"	EPDM	40	12250	1/2"	EPDM	40
17919*	1/2"	EPDM	80	12397	1/2"	EPDM	80
17920	1/2"	Viton	20	18456	1/2"	Viton	20
17921	1/2"	Viton	40	17923	1/2"	Viton	40
17922	1/2"	Viton	80	12410	1/2"	Viton	80

*Available with FPT Connections

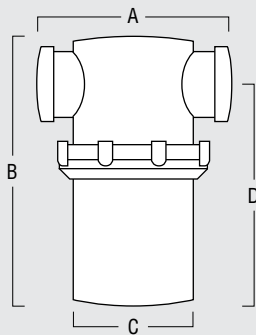


Dimensions	
A	3.06"
B	2.42"
C	1.86"
D	1.98"
Filter Area	4.27 sq"

LINE STRAINERS

STANDARD NYLON FPT LINE STRAINERS

Nylon Bowl				Clear Bowl			
Part#	Size	Gasket	Mesh	Part#	Size	Gasket	Mesh
11407	1/2"	EPDM	40	17935	1/2"	EPDM	20
11297	3/4"	EPDM	20	17936	1/2"	EPDM	40
11298	3/4"	EPDM	40	12553	1/2"	EPDM	80
11300	3/4"	EPDM	80	10949	1/2"	Viton	40
10962	3/4"	Viton	80	10946	1/2"	Viton	80
				12460	3/4"	EPDM	20
				11299	3/4"	EPDM	40
				11301	3/4"	EPDM	80
				10985	3/4"	Viton	40
				10986	3/4"	Viton	80



Dimensions

Size	A	B	C	D	F.Area
1/2"	3.64"	5.35"	2.95"	4.80"	19 sq"
3/4"	3.64"	5.35"	2.95"	4.80"	19 sq"

STANDARD POLYPROPYLENE FPT LINE STRAINERS

Polypropylene Bowl				Clear Bowl			
Part#	Size	Gasket	Mesh	Part#	Size	Gasket	Mesh
14577	1/2"	EPDM	20	14687	1/2"	EPDM	20
11354	1/2"	EPDM	40	12356	1/2"	EPDM	40
11385	1/2"	EPDM	80	14688	1/2"	EPDM	80
12375	1/2"	Viton	40	17925	1/2"	Viton	20
17924	1/2"	Viton	80	17926	1/2"	Viton	40
11262	3/4"	EPDM	20	13752	1/2"	Viton	80
11263	3/4"	EPDM	40	14689	3/4"	EPDM	20
11264	3/4"	EPDM	80	12262	3/4"	EPDM	40
11264-BC	3/4"	EPDM	80	14466	3/4"	EPDM	80
12573	3/4"	Viton	20	17927	3/4"	Viton	20
11376	3/4"	Viton	40	17928	3/4"	Viton	40
11277	3/4"	Viton	80	14323	3/4"	Viton	80

-BC Suffix Denotes Product is Offered with Barcoding



FLUID COMPONENTS

SPRAYER ACCESSORIES

COMMERCIAL & INDUSTRIAL PUMPS

AGRICULTURAL COMPONENTS

PRESSURE WASHER ACCESSORIES

POWER EQUIPMENT

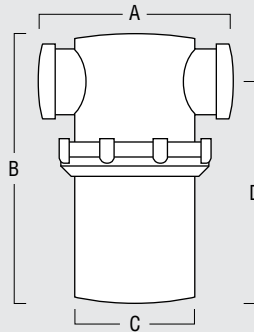


LINE STRAINERS



LARGE NYLON FPT LINE STRAINERS

Nylon Bowl				Clear Bowl			
Part#	Size	Gasket	Mesh	Part#	Size	Gasket	Mesh
11303	1"	EPDM	20	14674	1"	EPDM	20
11304	1"	EPDM	40	12165	1"	EPDM	40
11305	1"	EPDM	80	12324	1"	EPDM	80
10999	1"	Viton	20	11005	1"	Viton	20
11001	1"	Viton	40	11007	1"	Viton	40
11002	1"	Viton	80	11003	1"	Viton	80
17938	1¼"	EPDM	20	13716	1¼"	EPDM	20
11308	1¼"	EPDM	40	12166	1¼"	EPDM	40
11309	1¼"	EPDM	80	12430	1¼"	EPDM	80
11021	1¼"	Viton	20	11026	1¼"	Viton	20
11023	1¼"	Viton	40	11028	1¼"	Viton	40
11019	1¼"	Viton	80	11024	1¼"	Viton	80
17939	1½"	EPDM	20	11538	1½"	EPDM	20
11606	1½"	EPDM	40	12138	1½"	EPDM	40
11528	1½"	EPDM	80	12325	1½"	EPDM	80
11432	1½"	Viton	20	11145	1½"	Viton	20
11360	1½"	Viton	40	11054	1½"	Viton	40
11518	1½"	Viton	80	11186	1½"	Viton	80



Dimensions

Size	A	B	C	D	F.Area
1"	4.62"	6.36"	4.00"	5.60"	33 sq"
1¼"	5.00"	7.10"	4.00"	6.10"	36 sq"
1½"	5.16"	8.10"	4.00"	6.93"	39 sq"



LARGE POLYPROPYLENE FPT LINE STRAINERS

Polypropylene Bowl				Clear Bowl			
Part#	Size	Gasket	Mesh	Part#	Size	Gasket	Mesh
11265	1"	EPDM	20	12943	1"	EPDM	20
11266*	1"	EPDM	40	12488	1"	EPDM	40
11267*	1"	EPDM	80	12465	1"	EPDM	80
12338	1"	Viton	20	17929	1"	Viton	20
11378	1"	Viton	40	17930	1"	Viton	40
12336	1"	Viton	80	14915	1"	Viton	80
11268	1¼"	EPDM	20	13740	1¼"	EPDM	20
11269	1¼"	EPDM	40	12415	1¼"	EPDM	40
11270*	1¼"	EPDM	80	12389	1¼"	EPDM	80
17637	1¼"	Viton	20	17741	1¼"	Viton	20
11379	1¼"	Viton	40	17931	1¼"	Viton	40
12337	1¼"	Viton	80	14916	1¼"	Viton	80
11271	1½"	EPDM	20	13850	1½"	EPDM	20
11272*	1½"	EPDM	40	14460	1½"	EPDM	40
11273	1½"	EPDM	80	14464	1½"	EPDM	80
12572	1½"	Viton	20	17932	1½"	Viton	20
11380	1½"	Viton	40	13539	1½"	Viton	40
11381	1½"	Viton	80	13751	1½"	Viton	80

* Product is Available with -BC Suffix. -BC Suffix Denotes Product is Offered with Clamshell Packaging.

STRAINERS

FLUID COMPONENTS

SPRAYER ACCESSORIES

COMMERCIAL & INDUSTRIAL PUMPS

AGRICULTURAL COMPONENTS

PRESSURE WASHER ACCESSORIES

POWER EQUIPMENT

SUCTION STRAINERS



Part#	Size	Mesh
10403	3/8" Barb	50 x 50
10416	3/8" FNPT	40 x 36
10421	1/2" FNPT	40 x 30
11071	3/4" NPT	20 x 20

Mushroom Style

CLASS 800 Y-STRAINER

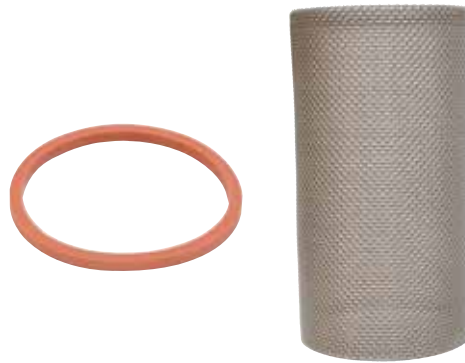


Part#	FPT	L	A	H
316-YS38	3/8"	2.559	0.748	1.811
316-YS12	1/2"	2.559	0.748	1.811
316-YS34	3/4"	3.150	0.905	2.283
316-YS112	1 1/2"	4.724	1.614	3.346

FEATURES

Investment Cast Body
 800 PSI maximum pressure
 230° F maximum working temperature

O-RINGS & SCREENS FOR STRAINERS



Part#	Description
11302-CSK	EPDM O-Ring for 3/4" Strainer, Clamshelled
11306-VI	EPDM O-Ring for 1" or 1.5" Nylon Strainers
10523-VI	1" Strainer Screen 50 Mesh
10523-VI-BC	1" Strainer Screen 50 Mesh, Barcoded
10524-BC	1" 124A Strainer Screen, 80 Mesh, Barcoded
10849-BC	1 1/2" Line Strainer Screen, 50 Mesh, Barcoded
10866-VI	1 1/2" Line Strainer Screen, 20x20, Stainless

POLYPROPYLENE PIPE



Part#	NPT
075-8-00P	3/4" no spacing
075-8-10P	3/4" with 10" spacing, 3/8" holes
075-8-20P	3/4" with 20" spacing, 3/8" holes
100-8-00P	1" no spacing
100-8-10P	1" with 10" spacing, 3/8" holes
100-8-20P	1" with 20" spacing, 3/8" holes

Schedule 80, Black. 20 Foot lengths standard



**RELIEF VALVES, TRANSFER GUN
& TIRE ASSEMBLY**

PRESSURE RELIEF VALVES



Part#	Description
RV34-300B	300 PSI Brass
RV34-700B	700 PSI Brass

FEATURES
 3/4" MPT inlet
 3/4" FPT discharge
 Solid brass construction

PRESSURE RELIEF VALVES



Part#	PSI	Inlet Port (MPT)
RV2064-01-58	150Max	1/2"
RV2064-06-58	400 Max	1/2"
RV2064-06-58-CSK	400 Max	1/2", Clamshelled
RV2066-01-58	150 Max	3/4"
RV2066-05-58	250 Max	3/4"
RV2066-06-58	400 Max	3/4"
RV2066-05-58-CSK	400 Max	3/4", Clamshelled

FEATURES
 3/4" FPT discharge
 Polypropylene & Brass Construction

FUEL TRANSFER GUN



Part#	Description
DN-506530	Polypropylene Fuel Transfer Gun

FEATURES
 Non-Locking
 150 PSI Max
 40 GPM
 Stainless Spring
 3/4" Hose Barb Connection
 Viton Pin Bushing & Rubber Parts

10" FOAM FILLED TIRE ASSEMBLY



Part #	Description
TWA410/350-4-PU	10" Polyurethane Filled Tire & Wheel
TWA410/350-4-PU-BC (Barcoded)	410/350-4

Description
Size
Tread
Bearing ID
Ball Bearing
Rim Size
Tread Width
Hub Width

10" Polyurethane Filled Tire & Wheel
 410/350-4
 2-ply 'Turf Tread'
 5/8" ID
 Steel
 4" Diameter
 2-5/8"
 2-1/4"

TIRE & WHEEL ASSEMBLIES

10 & 13" TIRE ASSEMBLIES



Part #	TWA410/350-4	TWA13X5-6
Description	10" Tire & Wheel	13" Tire & Wheel
Size	410/350-4	13.0 X 5.00 -6.00
Tread	2-ply 'Turf Tread'	2-ply 'Turf Tread'
Bearing ID	5/8" ID	3/4" ID
Ball Bearing	Steel	Steel
Rim Size	4" Diameter	6 3/8" Diameter
Tread Width	2-5/8"	4"
Hub Width	2-1/4"	2-1/4"

15" TIRE ASSEMBLY



Part #	Description
TWA15x600-6	15" Tire & Wheel Assembly

FEATURES

- 2-ply Tires With 'Turf Tread'
- 3/4" ID Steel Ball Bearing
- 6" Rim
- 4-1/2" Tread Width
- 3-1/8" Hub Width

HEAVY DUTY TIRE ASSEMBLY



Part #	Description
TWA-16x6.5-8/4-HOLE	18" Tire and Wheel Assembly

FEATURES

- 4-ply Tires
- 4 Hole Bolt Pattern with 4" Spacing
- 9" Rim
- 7" Tread Width
- Max Load 785 lbs. at 26 PSI

HEAVY DUTY 12" WHEEL ASSEMBLY



Part #	Description
TWA12x1.75-1/2	12" Wheel Assembly. Replacement wheel for PCD-E3-0098-MM

FEATURES

- Solid Polymer Tires
- 3/4" ID Steel Ball Bearing
- Chemical Resistant Polymer Rim
- 2" Tread Width
- Solid 5 Spoke Zero PSI Wheel