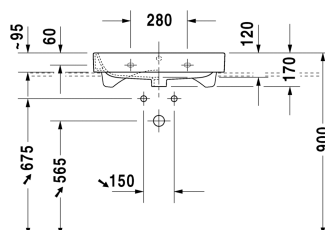
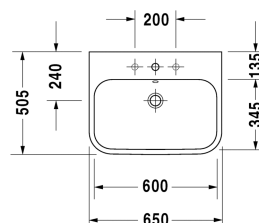


Happy D.2 Washbasin, furniture washbasin ground # 2318650025 / 2318650027 / 2318650028

| < 650 mm > |



Washbasin, furniture washbasin ground	Dimension	Weight	Order number
with overflow, with tap platform, overflow clip chrome included, 650 mm			
Colors			
00 White Alpin			
Variant			
● ● ●	650 x 505 mm	21.000 kilogram	2318650025
●	650 x 505 mm	21.000 kilogram	2318650027
☒	650 x 505 mm	21.000 kilogram	2318650028
Sanitary ceramics with the special WonderGliss surface finish will remain clean and attractive-looking for a long time to come. When ordering WonderGliss please add a "1" as eleventh digit to the model number.			
Accessory			
Design Siphon		1.500 kilogram	005036
Suitable products			
Console including drawers 3 drawers beneath consoles, 3 console supports, 1 siphon cover, 1 cut-out central, 1800 x 550 mm	1800 x 550 mm		F08531
Console including drawers 2 drawers beneath console, 2 console supports, 1 cut-out central, 1000 x 550 mm	1000 x 550 mm		F08522
Console including drawers 2 drawers beneath console, 2 console supports, 1 cut-out central, 1200 x 550 mm	1200 x 550 mm		F08523
Console including drawers 3 drawers beneath consoles, 3 console supports, 1 siphon cover, 1 cut-out central, 1500 x 550 mm	1500 x 550 mm		F08527
Console including drawer for vanity basin countertop including one cut-out, 1 drawer beneath console, 1 cover beneath console, 3 console supports, 1800 x 565 mm	1800 x 565 mm		DL6892 L/R
Console including drawer for wash bowls or semi-recessed washbasin 1 countertop including one central cut-out, 1 drawer beneath console, 2 console supports, 800 x 565 mm	800 x 565 mm		DL6788

Happy D.2 Washbasin, furniture washbasin ground # 2318650025 / 2318650027 / 2318650028

| < 650 mm > |

Console including drawer for wash bowls or semi-recessed washbasin 1 countertop including one central cut-out, 1 drawer beneath console, 2 console supports, 1000 x 565 mm	1000 x 565 mm	DL6789
Console including drawer for wash bowls or semi-recessed washbasin 1 countertop including one central cut-out, 1 drawer beneath console, 3 console supports, 1200 x 565 mm	1200 x 565 mm	DL6790
Console including drawer for wash bowls or semi-recessed washbasin countertop including one cut-out, 2 drawers beneath console, 3 console supports, 1800 x 565 mm	1800 x 565 mm	DL6792 L/R
Vanity unit for console 2 drawers, upper drawer including cut-out for siphon and siphon cover, 800 x 565 mm	800 x 565 mm	DL6799
Vanity unit for console 1 pull-out compartment, compartment consists of glass dividers and 2 boxes (small/large), 800 x 548 mm	800 x 548 mm	XL6713
Vanity unit for console 1 pull-out compartment, compartment consists of glass dividers and 2 boxes (small/large), 1000 x 548 mm	1000 x 548 mm	XL6715
Vanity unit for console 2 drawers, upper drawer including cut-out for siphon and siphon cover, 1000 x 548 mm	1000 x 548 mm	XL6716
Vanity unit for console 2 drawers, upper drawer including cut-out for siphon and siphon cover, 800 x 548 mm	800 x 548 mm	H26301
Vanity unit for console 2 drawers, upper drawer including cut-out for siphon and siphon cover, 1000 x 548 mm	1000 x 548 mm	H26302
Vanity unit for console 2 drawers, upper drawer including cut-out for siphon and siphon cover, 1000 x 565 mm	1000 x 565 mm	DL6798
Vanity unit for console 1 pull-out compartment, 820 x 547 mm	820 x 547 mm	LC6828
Vanity unit for console 1 pull-out compartment, 1020 x 547 mm	1020 x 547 mm	LC6829
Vanity unit for console with 2 drawers, upper drawer including cut-out for siphon and siphon cover, 820 x 547 mm	820 x 547 mm	LC6838
Vanity unit for console with 2 drawers, upper drawer including cut-out for siphon and siphon cover, 1020 x 547 mm	1020 x 547 mm	LC6839
Console for above counter basin and countertop basin 1 console with one cut-out, Width min. see ordering information, Width max 2000 mm, price per section of 100 mm, basic price till 800 mm, 550 mm	550 mm	LC096C
Console for above counter basin and countertop basin 1 console with two cut-outs, Width min. see ordering information, Width max 2000 mm, price per section of 100 mm, basic price till 800 mm, 550 mm	550 mm	LC097C

All drawings contain the necessary measurements which are subject to standard tolerances. They are stated in mm and are non-binding. Exact measurements, in particular for customised installation scenarios, can only be taken from the finished ceramic piece.