



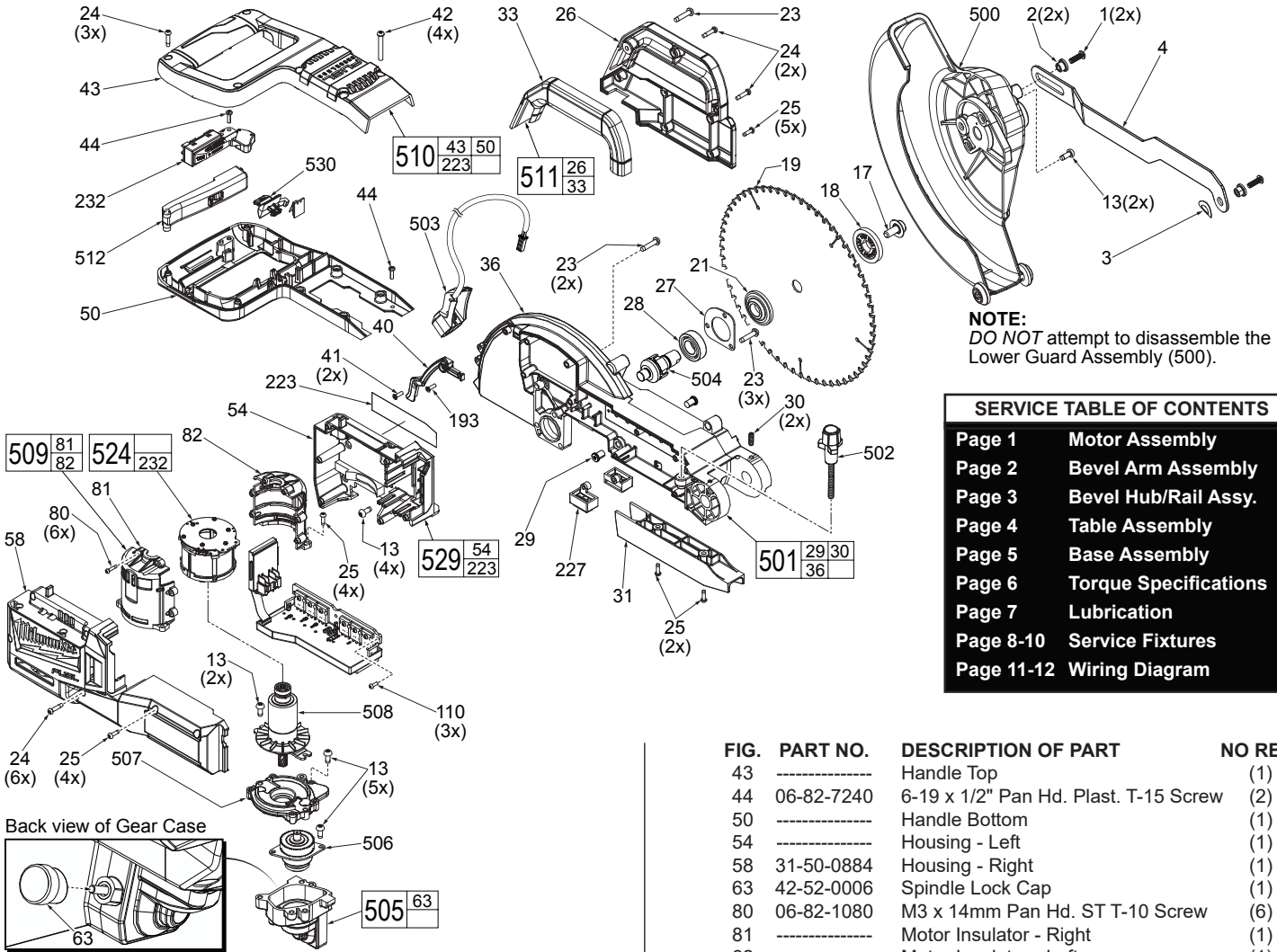
SERVICE PARTS LIST

MOTOR ASSEMBLY

BULLETIN NO.
54-40-2730

| | | | |
|--|----------------|------------------|-------------|
| SPECIFY CATALOG NO. AND SERIAL NO. WHEN ORDERING PARTS | | REVISED BULLETIN | DATE |
| M18™ FUEL™ 10" MITER SAW | | | May 2020 |
| CATALOG NO. | 2734-20 | SERIAL NUMBER | H17A |
| WIRING INSTRUCTION | | | |

EXAMPLE:
Component Parts (Small #) Are Included
When Ordering The Assembly (Large #).



NOTE:
DO NOT attempt to disassemble the
Lower Guard Assembly (500).

| SERVICE TABLE OF CONTENTS | |
|---------------------------|-----------------------|
| Page 1 | Motor Assembly |
| Page 2 | Bevel Arm Assembly |
| Page 3 | Bevel Hub/Rail Assy. |
| Page 4 | Table Assembly |
| Page 5 | Base Assembly |
| Page 6 | Torque Specifications |
| Page 7 | Lubrication |
| Page 8-10 | Service Fixtures |
| Page 11-12 | Wiring Diagram |

| FIG. | PART NO. | DESCRIPTION OF PART | NO REQ. |
|------|------------|--------------------------------------|---------|
| 1 | 05-81-0156 | M5 x 16mm Pan Hd. T-25 Mach. Screw | (2) |
| 2 | 42-40-0936 | Bushing | (2) |
| 3 | 40-50-3946 | Wave Washer | (1) |
| 4 | 44-14-0017 | Guard Link Arm | (1) |
| 13 | 05-74-1030 | M5 x 12mm Pan Hd. Tapt. T-25 Screw | (13) |
| 17 | 45-04-0410 | LH Blade Screw-6mm Hex Socket | (1) |
| 18 | 43-34-0810 | Outer Flange | (1) |
| 19 | ----- | 10" Blade | (1) |
| 21 | 43-34-0815 | Inner Flange | (1) |
| 23 | 06-82-0028 | M5 x 23mm Pan Hd. Tapt. T-25 Screw | (6) |
| 24 | 06-82-0033 | M4 x 18mm Pan Hd. ST T-20 Screw | (11) |
| 25 | 05-78-0011 | M3.5 x 12mm Pan Hd. Tapt. T-20 Screw | (15) |
| 26 | ----- | Carrying Handle Side Plate | (1) |
| 27 | 44-66-0031 | Bearing Retaining Plate | (1) |
| 28 | 02-04-1700 | Ball Bearing | (1) |
| 29 | 43-56-0810 | M8 x 11mm T-25 Blade Deflector | (2) |
| 30 | 05-89-0526 | M5 x 16mm Set Screw with Nylok | (2) |
| 31 | 43-56-0815 | Chip Deflector | (1) |
| 33 | ----- | Carrying Handle Cover | (1) |
| 36 | ----- | Motor Arm | (1) |
| 40 | 31-15-0014 | LED Lead Cover | (1) |
| 41 | 06-82-0034 | M3.5 x 12mm Flat Hd. T-15 Screw | (2) |
| 42 | 06-82-0042 | M5 x 35mm Pan Hd. PT T-20 Screw | (4) |

| FIG. | PART NO. | DESCRIPTION OF PART | NO REQ. |
|------|------------|--|---------|
| 43 | ----- | Handle Top | (1) |
| 44 | 06-82-7240 | 6-19 x 1/2" Pan Hd. Plast. T-15 Screw | (2) |
| 50 | ----- | Handle Bottom | (1) |
| 54 | ----- | Housing - Left | (1) |
| 58 | 31-50-0884 | Housing - Right | (1) |
| 63 | 42-52-0006 | Spindle Lock Cap | (1) |
| 80 | 06-82-1080 | M3 x 14mm Pan Hd. ST T-10 Screw | (6) |
| 81 | ----- | Motor Insulator - Right | (1) |
| 82 | ----- | Motor Insulator - Left | (1) |
| 110 | 05-81-0035 | M3 x 8mm Pan Hd. T-10 Mach. Screw | (3) |
| 193 | 05-74-0740 | M3.5 x 8mm Pan Hd. T-15 Mach. Screw | (1) |
| 223 | 12-20-0082 | Service Nameplate | (1) |
| 227 | 44-06-0023 | Cover Block | (2) |
| 232 | 23-66-0036 | On-Off Switch | (1) |
| 500 | 14-32-0245 | Lower Guard Assembly | (1) |
| 501 | 14-38-0543 | Motor Arm Assembly | (1) |
| 502 | 14-46-0058 | Dado Screw Assembly | (1) |
| 503 | 14-46-0059 | Shadow Line Assembly | (1) |
| 504 | 38-50-0016 | Spindle Assembly | (1) |
| 505 | 14-30-0024 | Gearcase Assembly | (1) |
| 506 | 14-29-0058 | Intermediate Gear Assembly | (1) |
| 507 | 14-13-0065 | Diaphragm Assy. with Needle Bearing & Pins | (1) |
| 508 | 16-07-0033 | Rotor Assembly | (1) |
| 509 | 31-50-0041 | Motor Insulator Assembly | (1) |
| 510 | 31-44-0098 | Main Handle Kit | (1) |
| 511 | 31-44-0099 | Carrying Handle Kit | (1) |
| 512 | 31-92-0215 | Trigger Paddle | (1) |
| 524 | 14-20-0058 | Electronics Assembly | (1) |
| 529 | 14-38-0544 | Left Housing Kit with Label | (1) |
| 530 | 31-01-0006 | LED Button Assembly | (1) |



SERVICE PARTS LIST

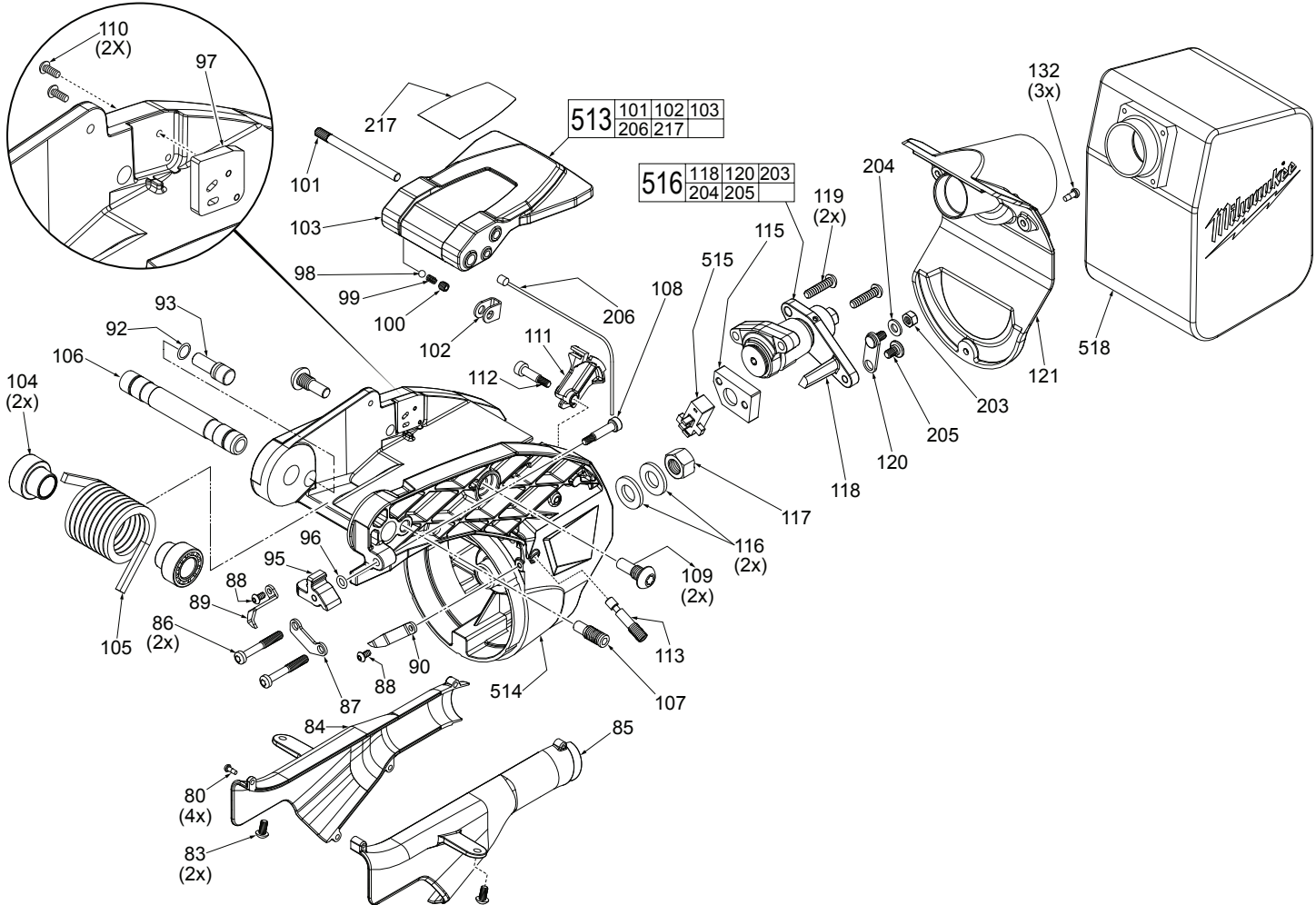
BEVEL ARM ASSEMBLY

BULLETIN NO.

54-40-2730

| | | | |
|--|----------------|--------------------|-------------|
| SPECIFY CATALOG NO. AND SERIAL NO. WHEN ORDERING PARTS | | REVISED BULLETIN | DATE |
| M18™ FUEL™ 10" MITER SAW | | | |
| CATALOG NO. | 2734-20 | SERIAL NUMBER | H17A |
| | | WIRING INSTRUCTION | |

00 EXAMPLE:
Component Parts (Small #)
Are Included When Ordering
The Assembly (Large #).



| FIG. | PART NO. | DESCRIPTION OF PART | NO REQ. | FIG. | PART NO. | DESCRIPTION OF PART | NO REQ. |
|------|------------|------------------------------------|---------|------|------------|-------------------------------------|---------|
| 80 | 06-82-1080 | M3 x 14mm Pan Hd. ST T-10 Screw | (4) | 108 | 06-87-0020 | Dado Stop Screw | (1) |
| 83 | 05-81-0201 | M5 x 10mm Pan Hd. T-25 Mach. Screw | (2) | 109 | 05-77-0035 | Handle Pivot Bolt | (2) |
| 84 | 31-15-0018 | Dust Chute - Left | (1) | 110 | 05-81-0035 | M3 x 8mm Pan Hd. T-10 Mach. Screw | (2) |
| 85 | 31-15-0019 | Dust Chute - Right | (1) | 111 | 43-56-0335 | Cable Guide | (1) |
| 86 | 05-81-0139 | M6 x 40mm Pan Hd. T-25 Screw | (2) | 112 | 06-82-0037 | M6 x 16mm Shoulder Screw | (1) |
| 87 | 42-92-0059 | Detent Mount Cover | (1) | 113 | 45-04-0026 | Detent Mount Adjustment Screw | (1) |
| 88 | 06-82-0043 | M4 x 8mm Pan Hd. T-20 Screw | (2) | 115 | 42-68-0049 | Detent Clamp Block | (1) |
| 89 | 44-72-0030 | Bevel Pointer - Left | (1) | 116 | 45-88-1671 | M12 Washer | (2) |
| 90 | 44-72-0035 | Bevel Scale Pointer - Right | (1) | 117 | 05-59-0140 | M12 Hex Nut | (1) |
| 92 | 34-40-0251 | O-Ring | (1) | 118 | 14-04-0095 | Brake Assembly | (1) |
| 93 | 44-60-0003 | Down Lock Pin | (1) | 119 | 06-82-0038 | M6 x 25mm Pan Hd. T-25 Mach. Screw | (2) |
| 95 | 45-52-0040 | Dado Stop | (1) | 120 | 44-14-0145 | Cable Brake Link Assembly | (1) |
| 96 | 34-40-0056 | O-Ring | (1) | 121 | 31-15-0021 | Rear Cover | (1) |
| 97 | 44-66-0071 | Handle Detent Plate | (1) | 132 | 05-78-0746 | M4 x 10mm Pan Hd. ST T-20 Screw | (3) |
| 98 | 02-02-1300 | Handle Detent Ball | (1) | 203 | 05-55-0016 | M6 Hex Nut | (1) |
| 99 | 40-50-3941 | Handle Detent Spring | (1) | 204 | 45-88-0089 | M6 Washer | (1) |
| 100 | 05-86-0656 | Set Screw | (1) | 205 | 06-82-0067 | M5 x 10mm Pan Hd. Hex Shoulder Scr. | (1) |
| 101 | 06-65-0021 | Handle Dowel Pin | (1) | 206 | 23-94-0004 | Brake Cable | (1) |
| 102 | 45-98-0040 | Cable Yoke | (1) | 217 | 10-20-2236 | Bevel Lock Label | (1) |
| 103 | ----- | Bevel Handle | (1) | 513 | 14-34-0026 | Bevel Handle Assembly | (1) |
| 104 | 42-40-0192 | Pivot Spring Bushing | (2) | 514 | 14-29-0059 | Bevel Arm Assembly | (1) |
| 105 | 40-50-0193 | Axle Spring | (1) | 515 | 14-67-0245 | Bevel Detent Locator Assembly | (1) |
| 106 | 42-12-0220 | Bevel Axle | (1) | 516 | 14-04-0025 | Bevel Brake Assembly | (1) |
| 107 | 05-89-0521 | Screw Stop | (1) | 518 | 42-16-0575 | Dust Bag Assembly | (1) |



SERVICE PARTS LIST

BEVEL HUB / RAIL ASSEMBLY

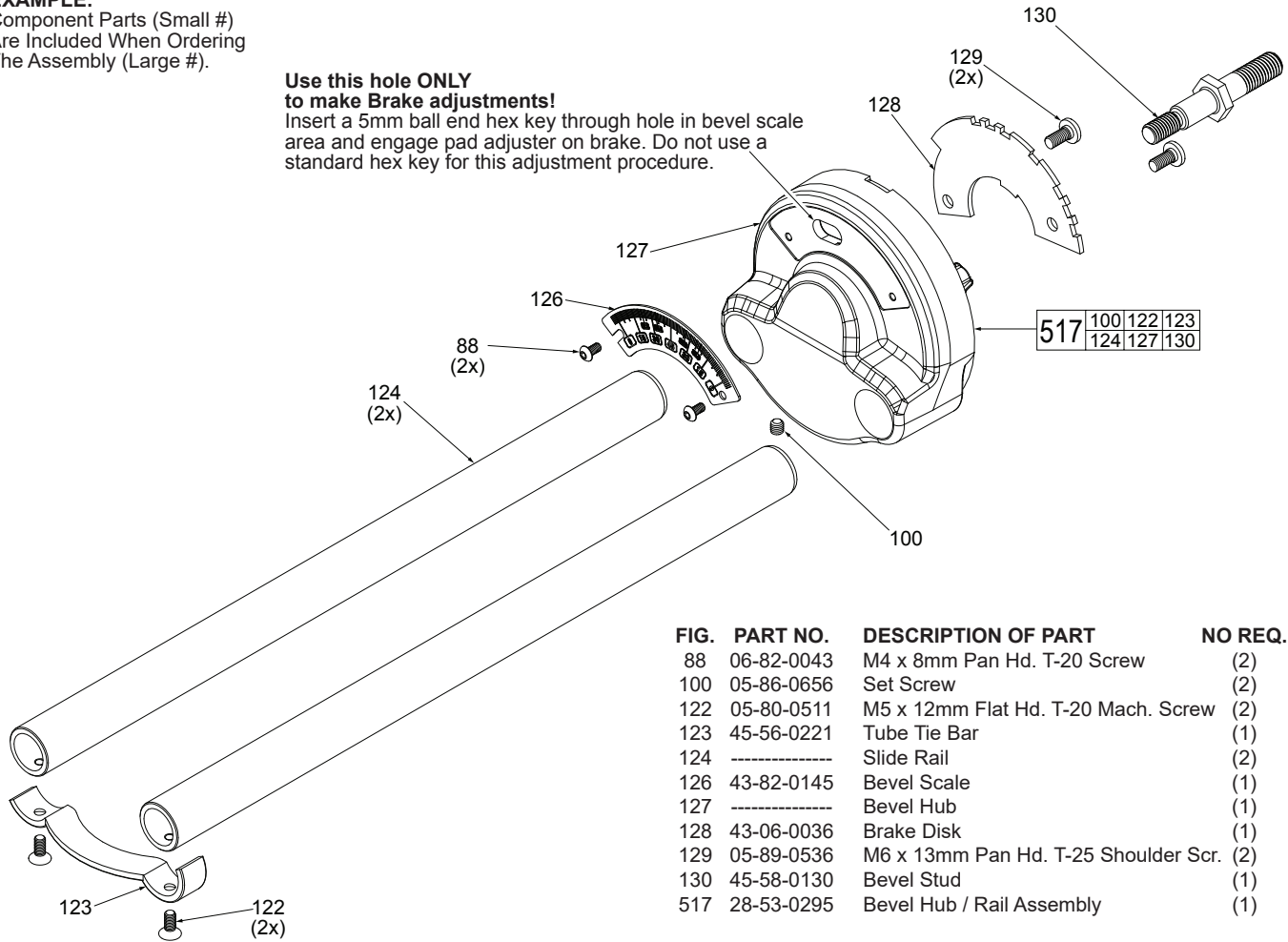
BULLETIN NO.

54-40-2730

| SPECIFY CATALOG NO. AND SERIAL NO. WHEN ORDERING PARTS | | REVISED BULLETIN | DATE |
|--|----------------|------------------|--------------------|
| M18™ FUEL™ 10" MITER SAW | | | |
| CATALOG NO. | 2734-20 | SERIAL NUMBER | H17A |
| | | | WIRING INSTRUCTION |

00 **EXAMPLE:**
Component Parts (Small #)
Are Included When Ordering
The Assembly (Large #).

**Use this hole ONLY
to make Brake adjustments!**
Insert a 5mm ball end hex key through hole in bevel scale
area and engage pad adjuster on brake. Do not use a
standard hex key for this adjustment procedure.



| FIG. | PART NO. | DESCRIPTION OF PART | NO REQ. |
|------|----------|---|---------|
| | 88 | 06-82-0043 M4 x 8mm Pan Hd. T-20 Screw | (2) |
| | 100 | 05-86-0656 Set Screw | (2) |
| | 122 | 05-80-0511 M5 x 12mm Flat Hd. T-20 Mach. Screw | (2) |
| | 123 | 45-56-0221 Tube Tie Bar | (1) |
| | 124 | Slide Rail | (2) |
| | 126 | 43-82-0145 Bevel Scale | (1) |
| | 127 | Bevel Hub | (1) |
| | 128 | 43-06-0036 Brake Disk | (1) |
| | 129 | 05-89-0536 M6 x 13mm Pan Hd. T-25 Shoulder Scr. | (2) |
| | 130 | 45-58-0130 Bevel Stud | (1) |
| | 517 | 28-53-0295 Bevel Hub / Rail Assembly | (1) |



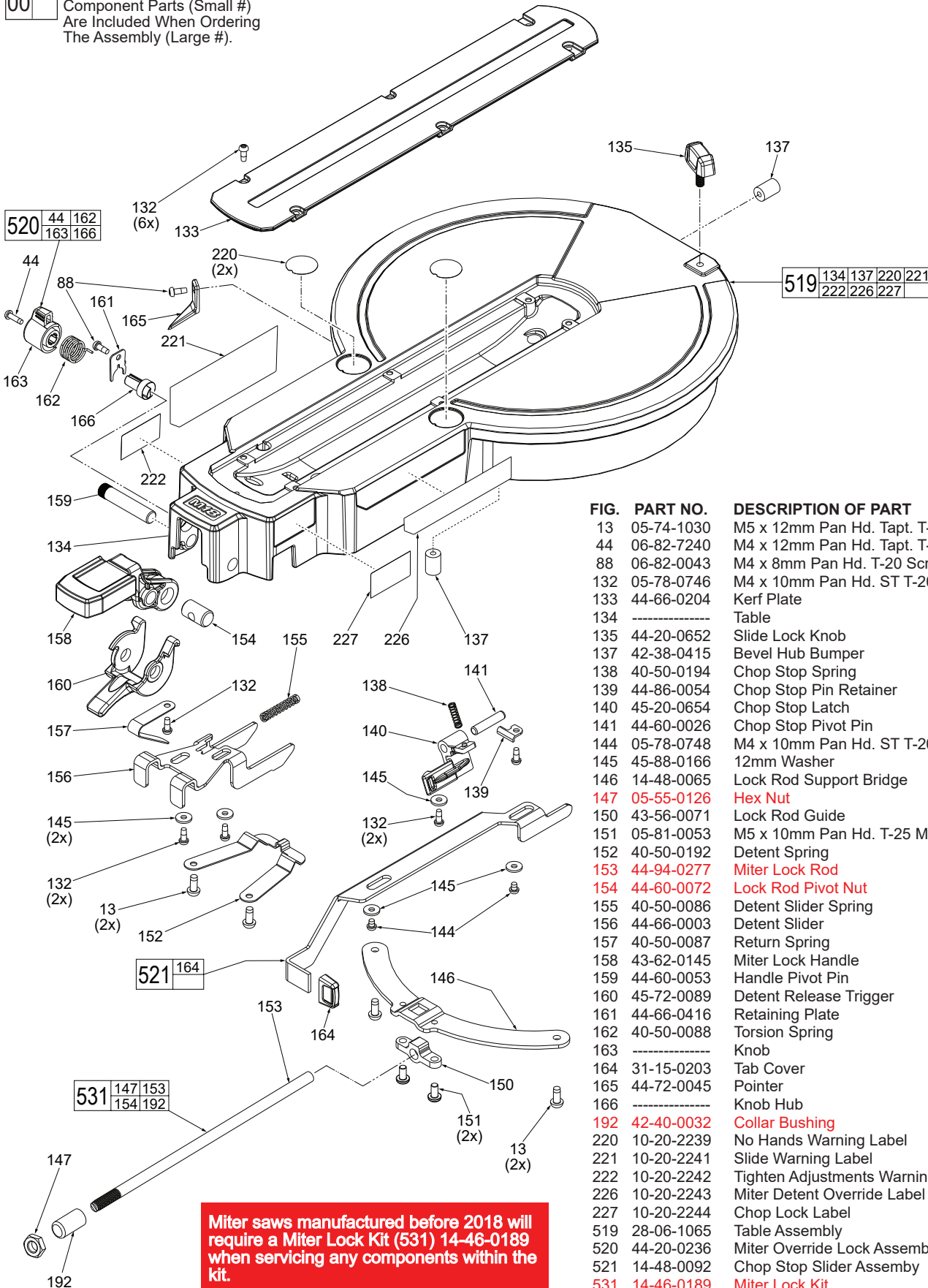
SERVICE PARTS LIST

BULLETIN NO.
54-40-2730

TABLE ASSEMBLY

| | | | |
|--|----------------|--------------------|-------------|
| SPECIFY CATALOG NO. AND SERIAL NO. WHEN ORDERING PARTS | | REVISED BULLETIN | DATE |
| M18™ FUEL™ 10" MITER SAW | | | |
| CATALOG NO. | 2734-20 | SERIAL NUMBER | H17A |
| | | WIRING INSTRUCTION | |

00 EXAMPLE:
Component Parts (Small #)
Are Included When Ordering
The Assembly (Large #).



| FIG. | PART NO. | DESCRIPTION OF PART | NO REQ. |
|------|------------|------------------------------------|---------|
| 13 | 05-74-1030 | M5 x 12mm Pan Hd. Tapt. T-25 Screw | (4) |
| 44 | 06-82-7240 | M4 x 12mm Pan Hd. Tapt. T-20 Screw | (1) |
| 88 | 06-82-0043 | M4 x 8mm Pan Hd. T-20 Screw | (2) |
| 132 | 05-78-0746 | M4 x 10mm Pan Hd. ST T-20 Screw | (11) |
| 133 | 44-66-0204 | Kerf Plate | (1) |
| 134 | ----- | Table | (1) |
| 135 | 44-20-0652 | Slide Lock Knob | (1) |
| 137 | 42-38-0415 | Bevel Hub Bumper | (2) |
| 138 | 40-50-0194 | Chop Stop Spring | (1) |
| 139 | 44-86-0054 | Chop Stop Pin Retainer | (1) |
| 140 | 45-20-0654 | Chop Stop Latch | (1) |
| 141 | 44-60-0026 | Chop Stop Pivot Pin | (1) |
| 144 | 05-78-0748 | M4 x 10mm Pan Hd. ST T-20 Screw | (2) |
| 145 | 45-88-0166 | 12mm Washer | (5) |
| 146 | 14-48-0065 | Lock Rod Support Bridge | (1) |
| 147 | 05-55-0126 | Hex Nut | (1) |
| 150 | 43-56-0071 | Lock Rod Guide | (1) |
| 151 | 05-81-0053 | M5 x 10mm Pan Hd. T-25 Mach. Screw | (2) |
| 152 | 40-50-0192 | Detent Spring | (1) |
| 153 | 44-94-0277 | Miter Lock Rod | (1) |
| 154 | 44-60-0072 | Lock Rod Pivot Nut | (1) |
| 155 | 40-50-0086 | Detent Slider Spring | (1) |
| 156 | 44-66-0003 | Detent Slider | (1) |
| 157 | 40-50-0087 | Return Spring | (1) |
| 158 | 43-62-0145 | Miter Lock Handle | (1) |
| 159 | 44-60-0053 | Handle Pivot Pin | (1) |
| 160 | 45-72-0089 | Detent Release Trigger | (1) |
| 161 | 44-66-0416 | Retaining Plate | (1) |
| 162 | 40-50-0088 | Torsion Spring | (1) |
| 163 | ----- | Knob | (1) |
| 164 | 31-15-0203 | Tab Cover | (1) |
| 165 | 44-72-0045 | Pointer | (1) |
| 166 | ----- | Knob Hub | (1) |
| 192 | 42-40-0032 | Collar Bushing | (1) |
| 220 | 10-20-2239 | No Hands Warning Label | (2) |
| 221 | 10-20-2241 | Slide Warning Label | (1) |
| 222 | 10-20-2242 | Tighten Adjustments Warning Label | (1) |
| 226 | 10-20-2243 | Miter Detent Override Label | (1) |
| 227 | 10-20-2244 | Chop Lock Label | (1) |
| 519 | 28-06-1065 | Table Assembly | (1) |
| 520 | 44-20-0236 | Miter Override Lock Assembly | (1) |
| 521 | 14-48-0092 | Chop Stop Slider Assembly | (1) |
| 531 | 14-46-0189 | Miter Lock Kit | (1) |

Miter saws manufactured before 2018 will require a Miter Lock Kit (531) 14-46-0189 when servicing any components within the kit.



SERVICE PARTS LIST

BULLETIN NO.
54-40-2730

BASE ASSEMBLY

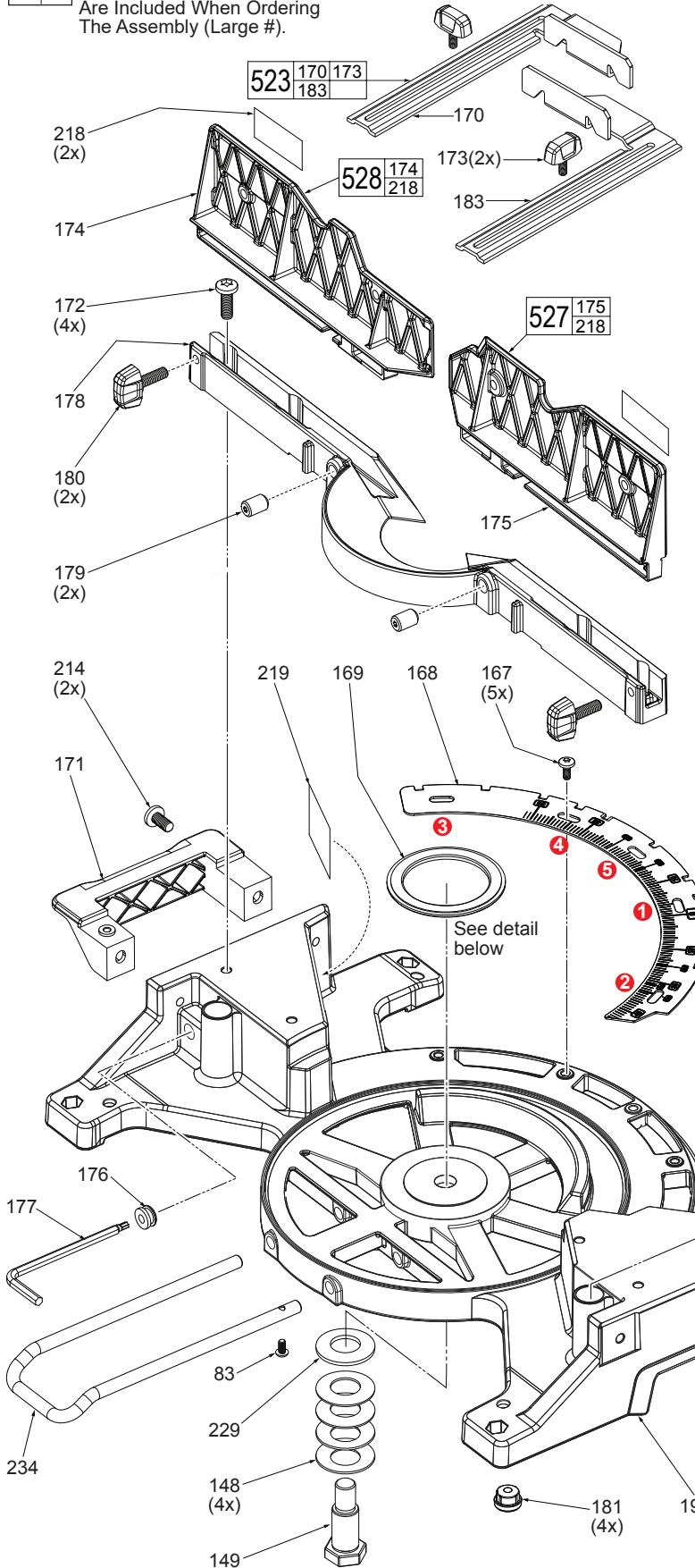
SPECIFY CATALOG NO. AND SERIAL NO. WHEN ORDERING PARTS

| | |
|--------------------|------|
| REVISED BULLETIN | DATE |
| WIRING INSTRUCTION | |

M18™ FUEL™ 10" MITER SAW

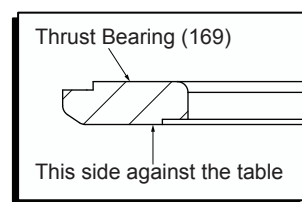
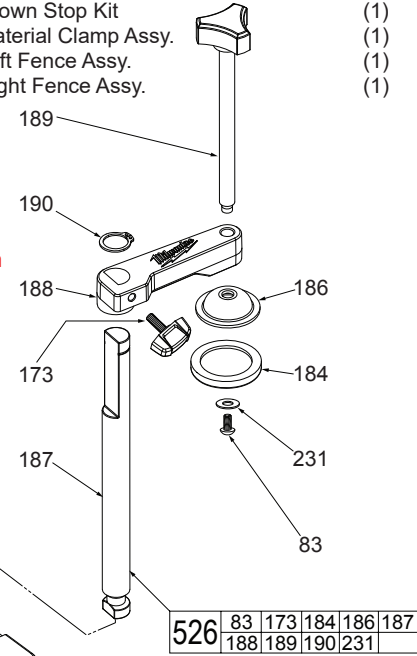
| | | | |
|-------------|---------|---------------|------|
| CATALOG NO. | 2734-20 | SERIAL NUMBER | H17A |
|-------------|---------|---------------|------|

EXAMPLE:
Component Parts (Small #)
Are Included When Ordering
The Assembly (Large #).



| FIG. | PART NO. | DESCRIPTION OF PART | NO REQ. |
|------|------------|--------------------------------------|---------|
| 83 | 05-81-0201 | M5 x 10mm Pan Hd. T-25 Mach. Screw | (2) |
| 148 | 40-50-8621 | Belleville Spring Washer | (4) |
| 149 | 45-08-0470 | 7/8" Table Bolt | (1) |
| 167 | 05-89-0531 | M5 x 13mm Pan Hd. T-25 Shoulder Scr. | (5) |
| 168 | 42-92-1155 | Detent Plate | (1) |
| 169 | 02-80-0060 | Thrust Bearing | (1) |
| 170 | ----- | Crown Guide - Right | (1) |
| 171 | 31-44-0096 | Right Handle | (1) |
| 172 | 05-81-0151 | M8 x 25mm Pan Hd. T-45 Mach. Screw | (4) |
| 173 | 06-82-0066 | Vise Screw | (3) |
| 174 | ----- | Right Sliding Fence | (1) |
| 175 | ----- | Left Sliding Fence | (1) |
| 176 | 22-90-0185 | Wrench Grommet | (1) |
| 177 | 49-96-0185 | Wrench | (1) |
| 178 | 28-35-0085 | Fixed Fence | (1) |
| 179 | 05-86-0600 | M12 x 18mm T-25 Set Screw | (2) |
| 180 | 43-98-0041 | Fence Lock Knob | (2) |
| 181 | 44-34-0017 | Miter Base Foot | (4) |
| 182 | 31-44-0097 | Left Handle | (1) |
| 183 | ----- | Crown Guide - Left | (1) |
| 184 | 45-16-0105 | Rubber Shoe | (1) |
| 186 | 45-16-0115 | Clamp Shoe | (1) |
| 187 | 44-94-0268 | Vise Rod | (1) |
| 188 | 42-30-0355 | Clamp Body | (1) |
| 189 | 43-98-0043 | Vise Knob | (1) |
| 190 | 34-60-0004 | Retaining Ring | (1) |
| 191 | ----- | Base | (1) |
| 214 | 06-82-0068 | M8 x 16mm Pan Hd. T-25 Mach. Screw | (4) |
| 218 | 10-20-2237 | Fence Warning Label | (2) |
| 219 | 10-20-2238 | French/Spanish Warning Label | (1) |
| 229 | 45-88-0091 | Thick Washer | (1) |
| 231 | 45-88-0109 | Washer | (1) |
| 234 | 44-94-0085 | Kick Stand | (1) |
| 522 | 28-06-1075 | Base Assembly | (1) |
| 523 | 43-98-0295 | Crown Stop Kit | (1) |
| 526 | 42-38-0084 | Material Clamp Assy. | (1) |
| 527 | 28-35-0090 | Left Fence Assy. | (1) |
| 528 | 28-35-0095 | Right Fence Assy. | (1) |

NOTE:
When securing
Detent
Plate (168), there is a
tightening order to
Screws (167) as shown.
Tighten to 80-100 kg/cm
(69-86 in/lbs).



SCREW TORQUE SPECIFICATIONS

| FIG. | PART NO. | DESCRIPTION OF FASTENER | WHERE USED | SEAT TORQUE | |
|--|------------|--|---|-----------------------|----------|
| | | | | (KG/CM) | (IN/LBS) |
| MOTOR ARM ASSEMBLY | | | | | |
| 13 | 05-74-1030 | M5 x 12mm Pan Hd. Taptite T-25 Screw | Intermediate Gear Assembly | 80-90 | 69-78 |
| 13 | 05-74-1030 | M5 x 12mm Pan Hd. Taptite T-25 Screw | Diaphragm Assembly | 80-90 | 69-78 |
| 13 | 05-74-1030 | M5 x 12mm Pan Hd. Taptite T-25 Screw | Rotor Assembly | 80-90 | 69-78 |
| 17 | 45-04-0410 | LH Blade Screw - 6mm Hex Socket | Outer/Inner Flanges/Spindle Assembly | 149.5 | 130 |
| 23 | 06-82-0028 | M5 x 23mm Pan Hd. Taptite T-25 Screw | Bearing Retaining Plate/Gear Case Assy. | 80-100 | 69-86 |
| 25 | 05-78-0011 | M3.5 x 12mm Pan Hd. Taptite T-20 Screw | Motor Insulator Halves | 20-25 | 17-21 |
| 80 | 06-82-1080 | M3 x 14mm Pan Hd. ST T-10 Screw | Motor Insulator - Right | 10-15 | 8-13 |
| BEVEL HUB / RAIL ASSEMBLY, BEVEL ARM ASSEMBLY | | | | | |
| 86 | 05-81-0139 | M6 x 40mm Pan Hd. T-25 Screw | Detent Mount Cover | 120-130 | 104-112 |
| 100 | 05-86-0656 | Set Screw | Bevel Handle | Adjustment for detent | |
| 113 | 45-04-0026 | Detent Mount Adjustment Screw | Bevel Arm Assembly | Adjustment for detent | |
| 117 | 05-59-0140 | M12 Hex Nut | Bevel Stud | Adjust for assembly | |
| TABLE ASSEMBLY | | | | | |
| 149 | 45-08-0470 | 7/8" Table Bolt | Bottom of Table Assembly | 600-640 | 520-555 |
| BASE ASSEMBLY | | | | | |
| 167 | 05-89-0531 | M5 x 13mm Pan Hd. T-25 Shoulder Screw | Detent Plate | 80-100 | 69-86 |
| 179 | 05-86-0600 | M12 x 18mm T-25 Set Screw | Fixed Fence | Adjust per fence | |

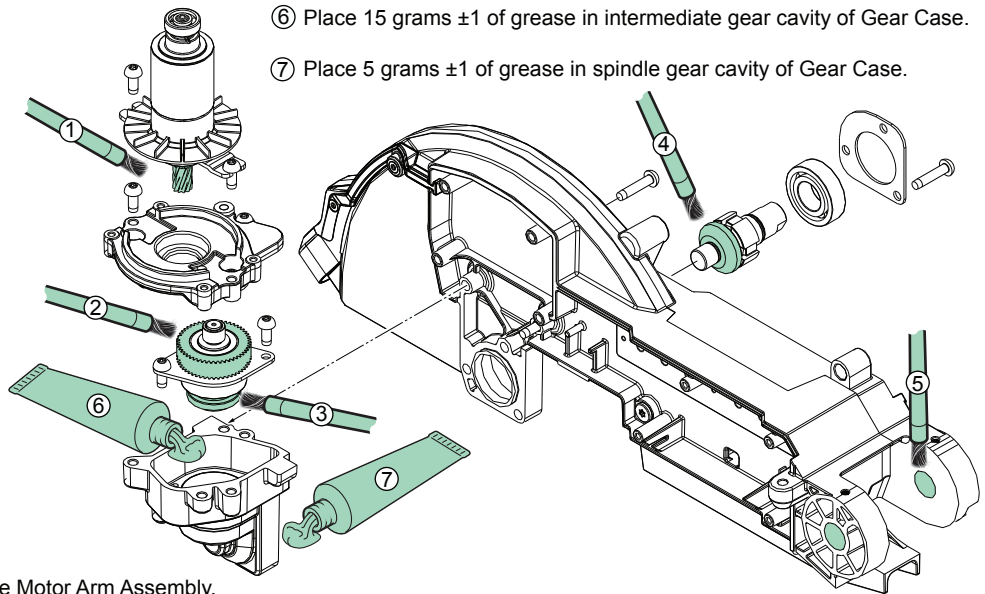
LUBRICATION NOTES:

Type 'Y' Grease

No. 49-08-5270, 6oz. tube

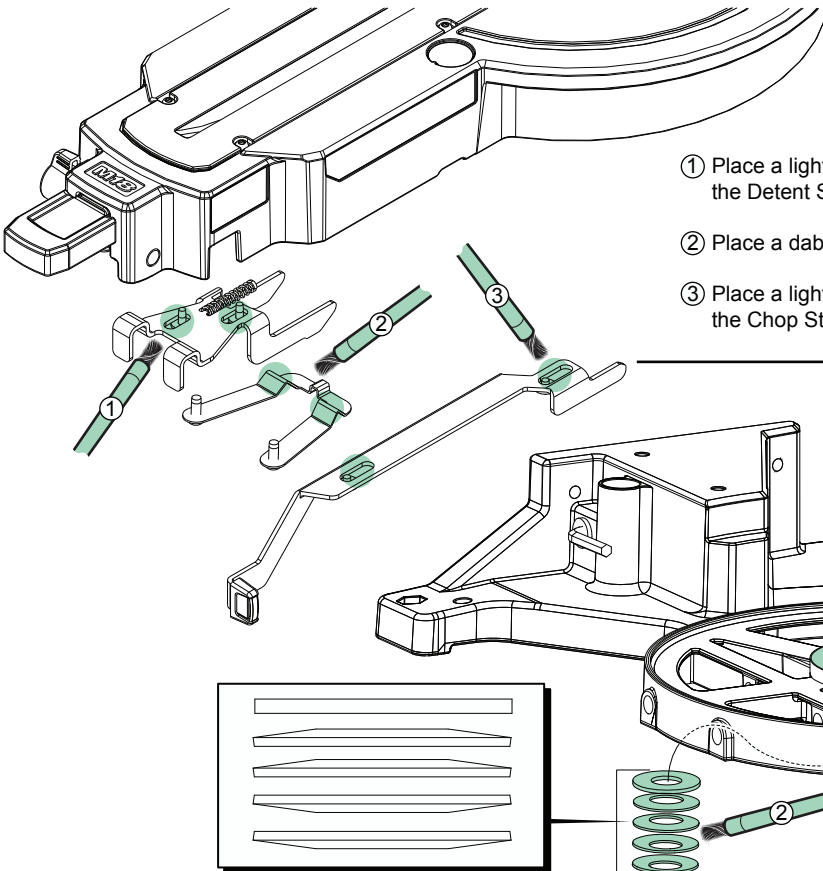
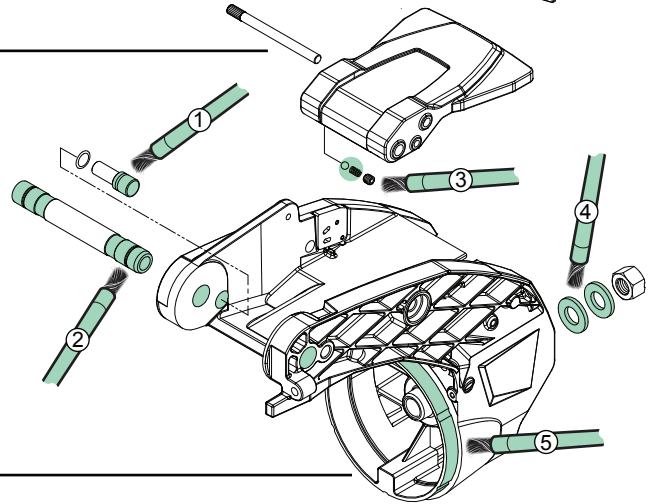
When servicing the gears or the Gear Case, 90-95% of the old grease must be removed prior to new grease being added. Clean gear assemblies with a clean, dry cloth.

- ① Place a heavy layer of grease to the pinion teeth of the Rotor Assembly.
- ② Place a heavy layer of grease to the gear teeth of the 1st gear of the Intermediate Gear Assembly.
- ③ Place a heavy layer of grease to the teeth of the bevel pinion of the Intermediate Gear Assembly.
- ④ Place a heavy layer of grease to the teeth of the bevel gear of the Spindle Assembly.
- ⑤ Lightly coat inside axle bores at the rear of the Motor Arm Assembly.



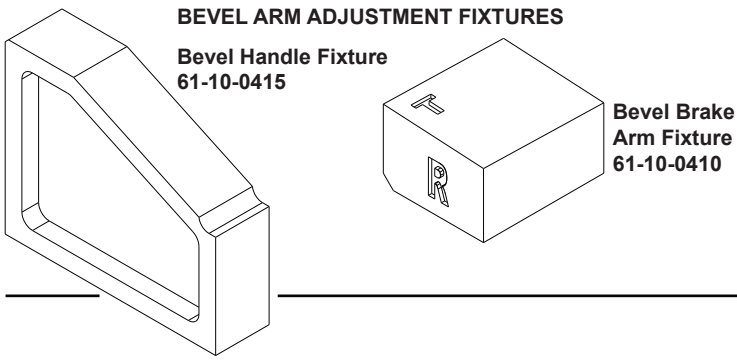
- ⑥ Place 15 grams ± 1 of grease in intermediate gear cavity of Gear Case.
- ⑦ Place 5 grams ± 1 of grease in spindle gear cavity of Gear Case.

- ① Lightly coat the back end of the Down Lock Pin and the corresponding cavity in the Bevel Arm Assembly with grease.
- ② Place a thin coat of grease to the surface of the Bevel Axle, being sure to get grease into the outer grooves. Lightly coat the corresponding cavities in the Bevel Arm Assembly.
- ③ Place a dab of grease to detent ball and spring of the Bevel Handle Assembly.
- ④ Coat Washers with a light film of grease. Rounded edges of washers must face each other.
- ⑤ Brush a light film of grease to the outside surface on the Bevel Arm Assembly that contacts with the Bevel Hub.

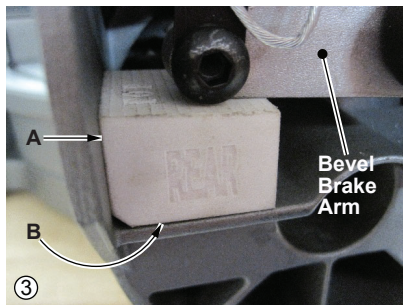
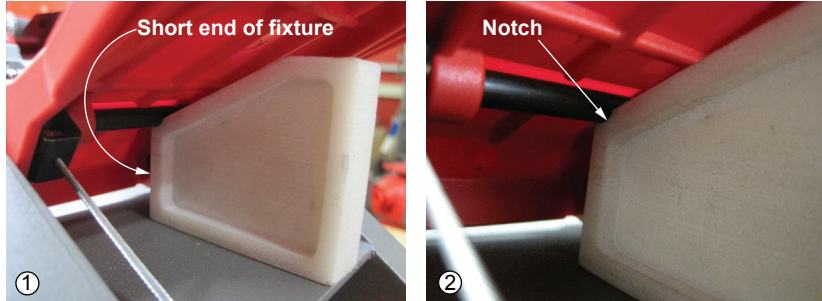


- ① Place a light coat of grease to the two slotted areas (both sides of the part) on the Detent Slider.
- ② Place a dab of grease to the two raised catch tabs on the Detent Spring.
- ③ Place a light coat of grease to the two slotted areas (both sides of the part) on the Chop Stop Slider Assembly.

- ① Brush a heavy coat of grease to the center surface of Base as shown.
- ② Coat the Thick Washer and the four Bevel Spring Washers with grease. Orient the parts as shown in the detail.



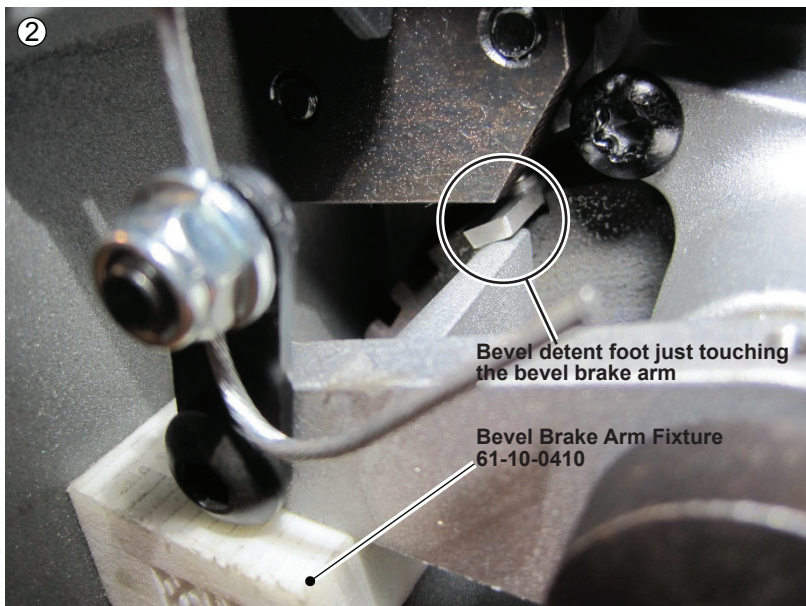
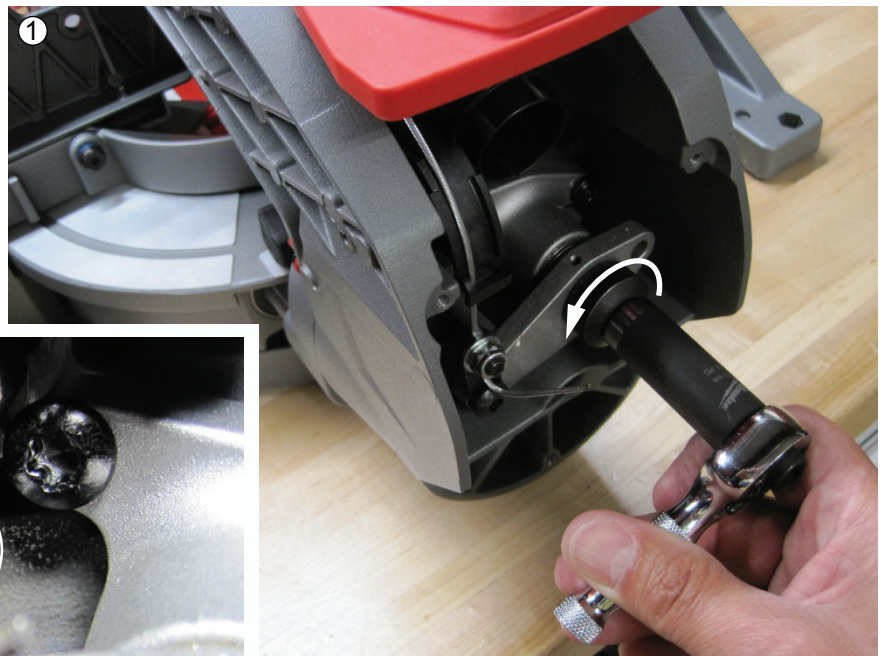
Two Service Fixtures are required to set the Bevel Brake



1. Short end with notch is used to support the bevel handle to set brake cable adjustment.
2. Short end notch catches under black steel pin to support handle. Handle will be in detent position.
3. Fixture seats against the side 'A' of bevel arm. Fixture also seats on wall 'B' of bevel arm to support bevel brake arm during cable adjustment.

1. Loosen brake cam nut to allow cable length to be set.
2. With fixture 61-10-0410 in place, the bevel brake arm should "just" touch the bevel detent foot when it is seated in the 0° notch.

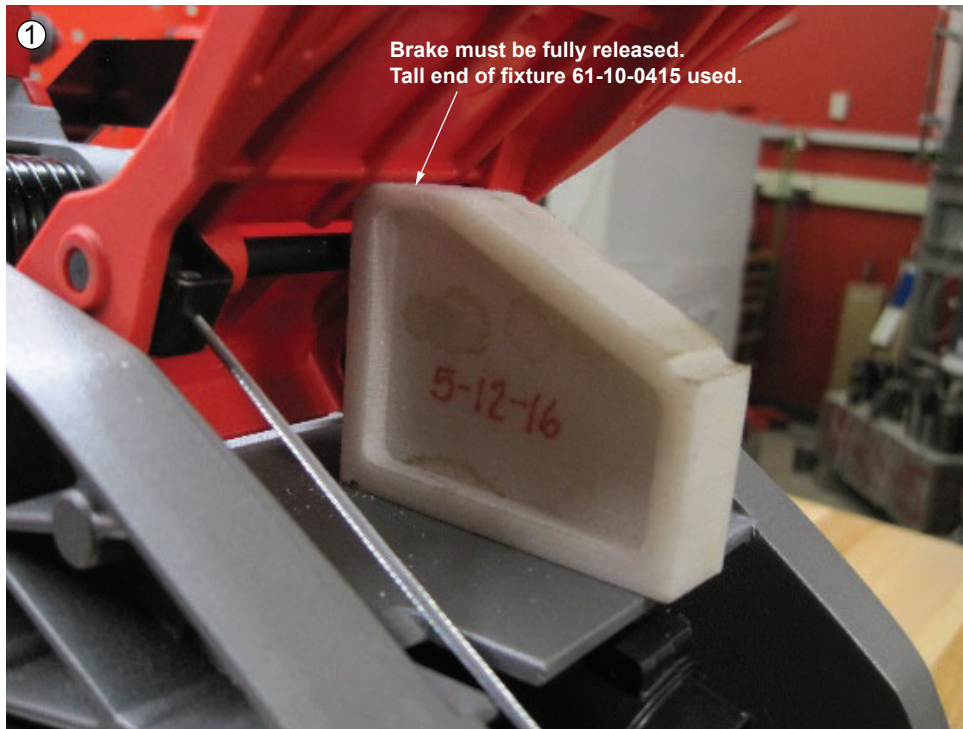
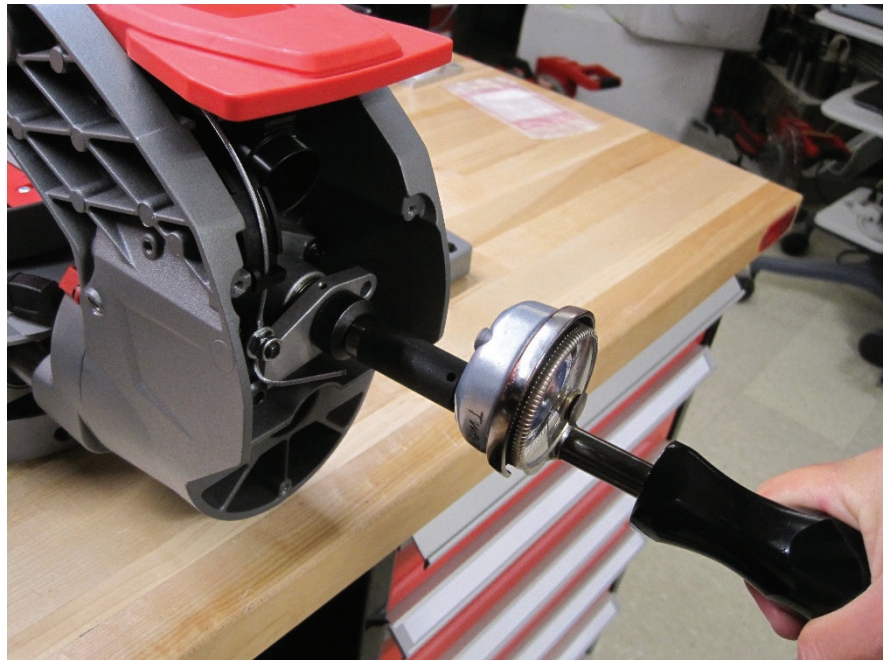
Remove all slack in the brake cable and tighten cable nut to 40-50 kg/cm (34-43 in-lbs).



Proper Adjustment of Brake Cam Nut:

After brake cable is adjusted and clamped, brake cam nut is to be torqued to 23-28.8 kgf.cm (20-25 in.lb.).

Brake is to be in the fully activated (holding) position.



Adjustment of Brake Assembly Stationary Brake Pad:

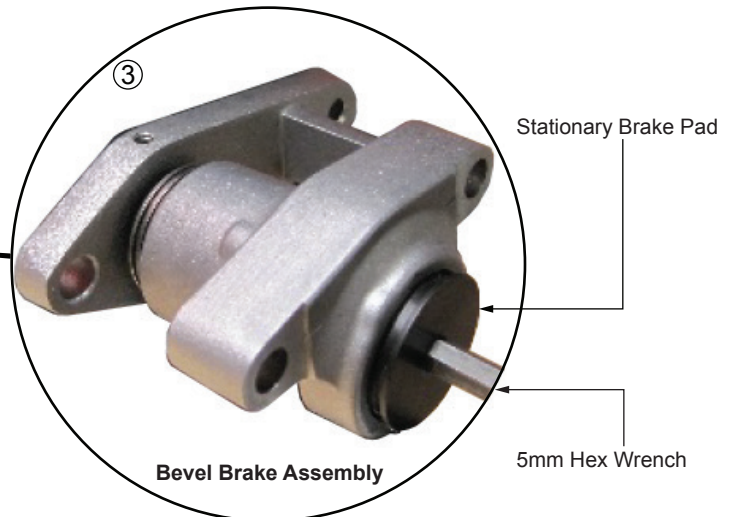
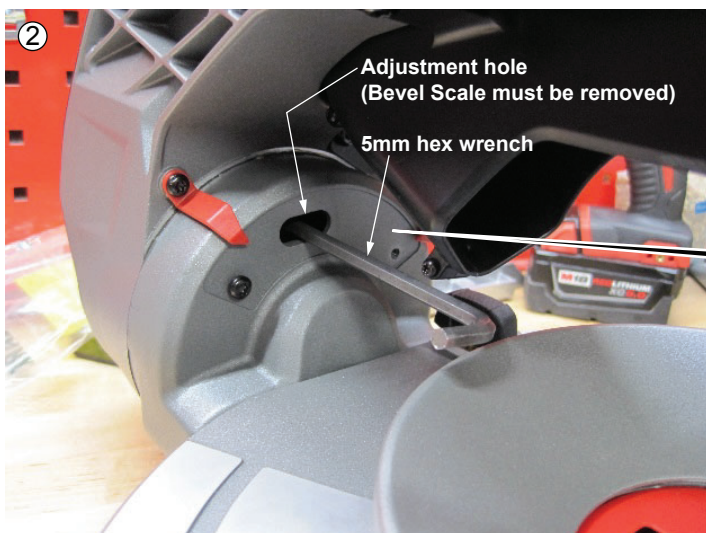
Stationary brake pad needs to be adjusted to compensate for position tolerances in bevel hub and brake parts.

1. Tall end of fixture 61-10-0415 slips under rib in handle and sits on bevel arm top wall to prevent handle movement.
2. With brake fully released, place a 5mm hex wrench through adjustment hole on bevel hub and into hex drive in stationary brake pad.

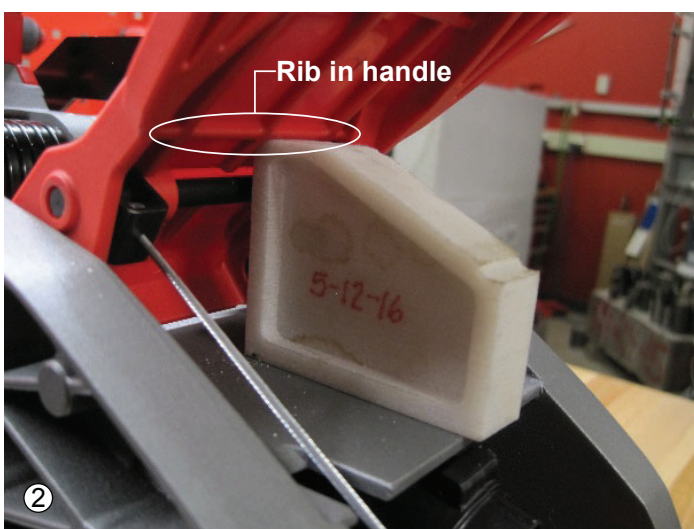
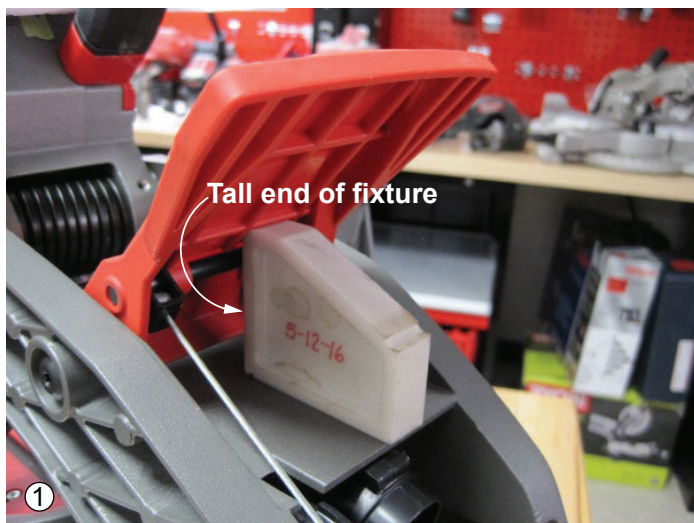
Run brake pad down until it touches the brake disc, then back off 1/8 of a turn (45° of wrench turn).

3. Detail of what is being adjusted inside of the bevel arm/bevel hub.

9



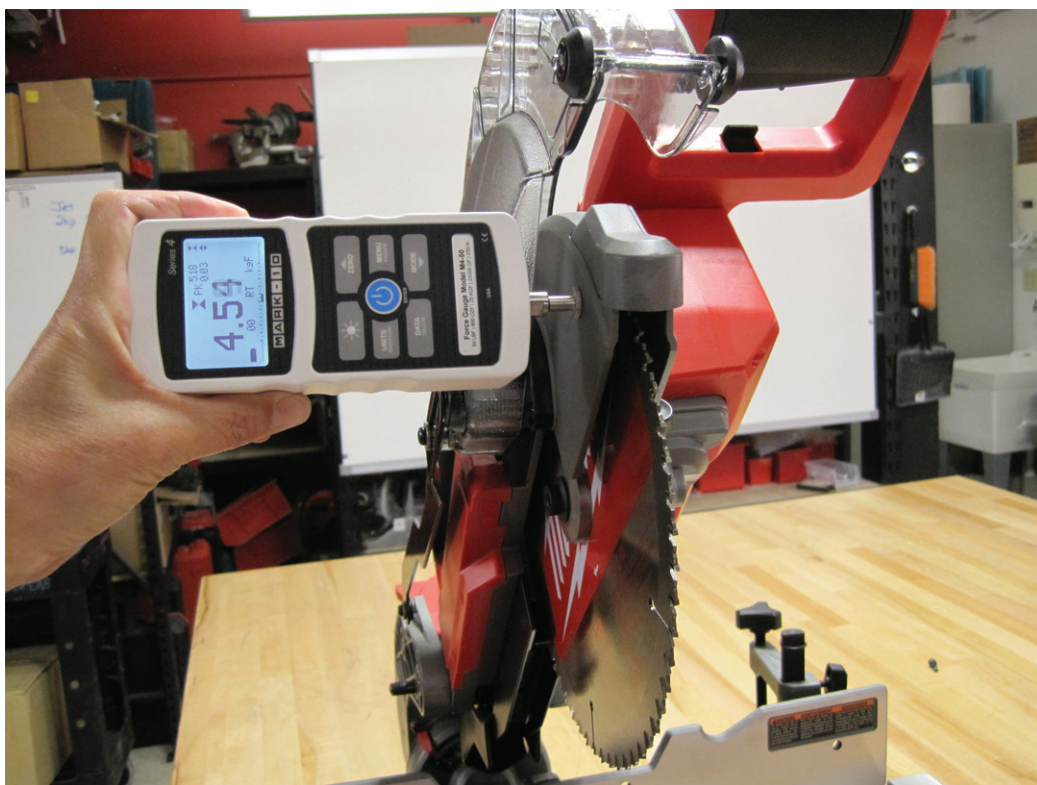
One Service Fixture is required to check bevel free force



Bevel Handle Fixture Use:
Bevel Free Force (when checked after brake cable is adjusted).

1. Tall end of fixture 61-10-0415 used to support bevel handle to check bevel free force.
2. Tall end slips under rib in handle and sits on bevel arm top wall to prevent handle movement.

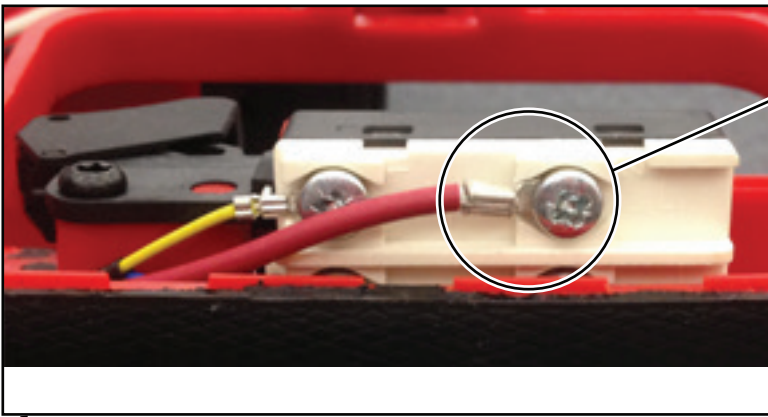
10



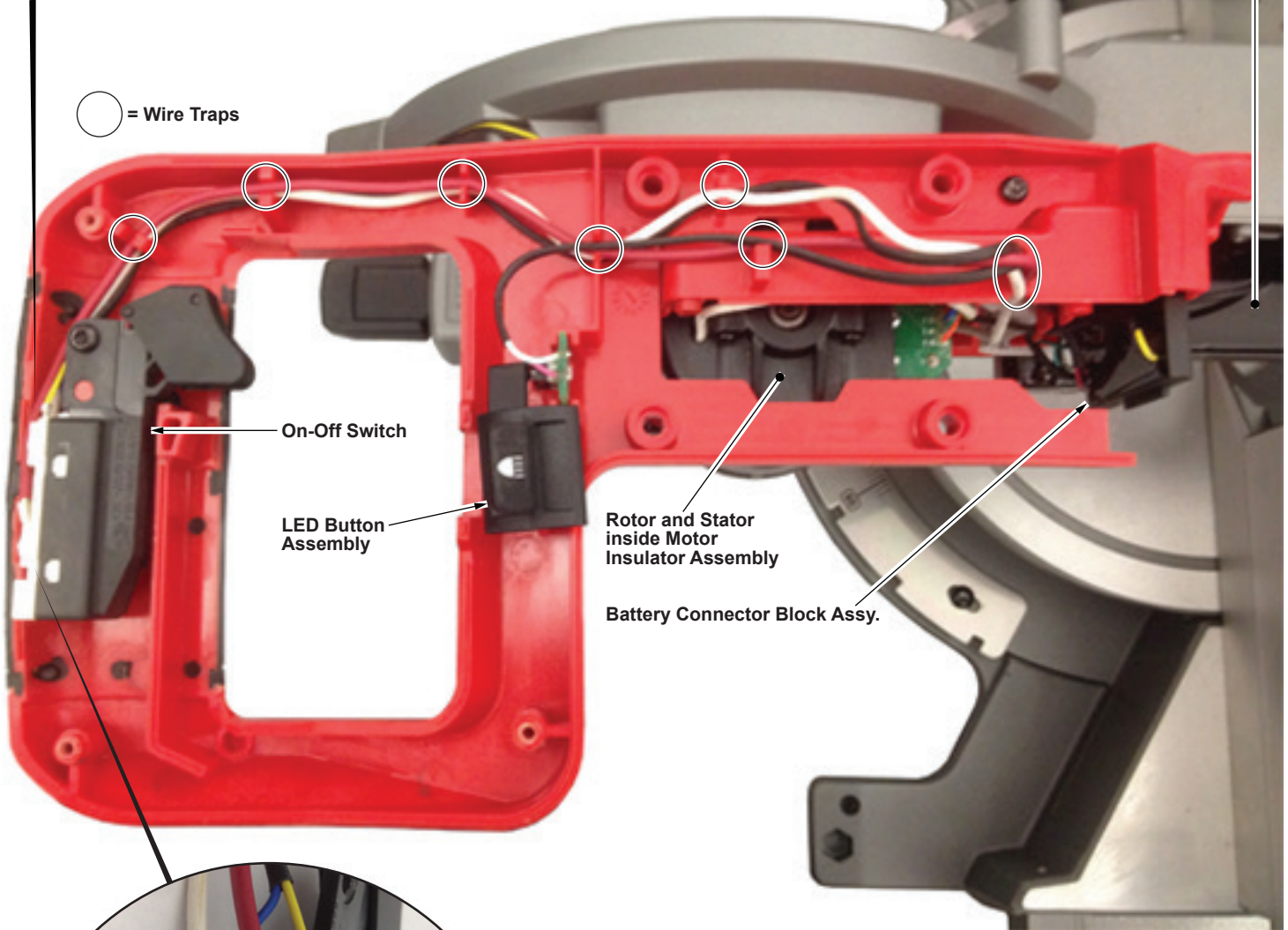
On-Off Switch detail

Note:

The orientation of the ring terminals is barrel side out. Screw torque is 11-13 kg-cm (9-12 in-lbs).

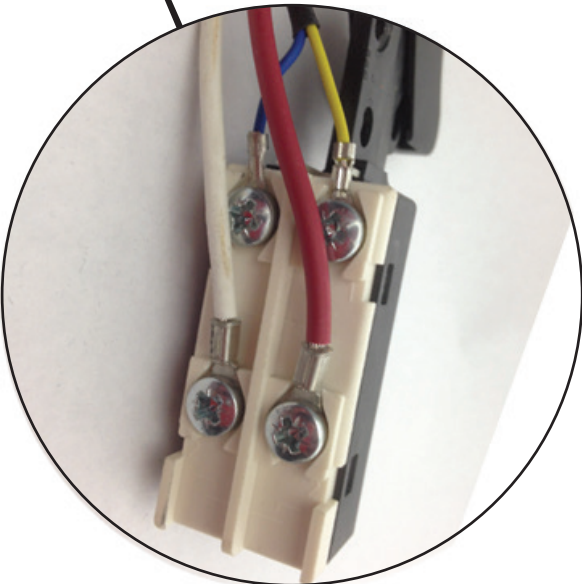


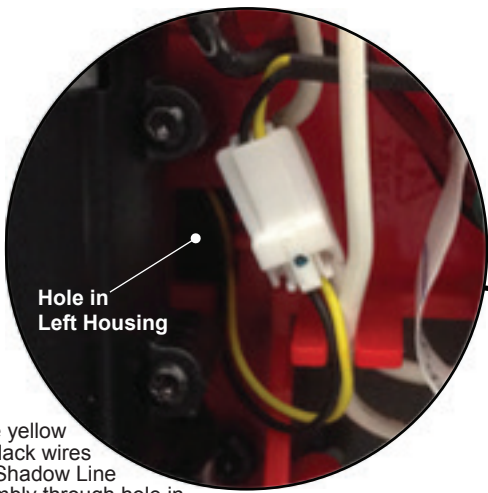
PCBA



AS AN AID TO REASSEMBLY, TAKE NOTICE OF WIRE ROUTING AND POSITION IN WIRE GUIDES AND TRAPS WHILE DISMANTLING TOOL.

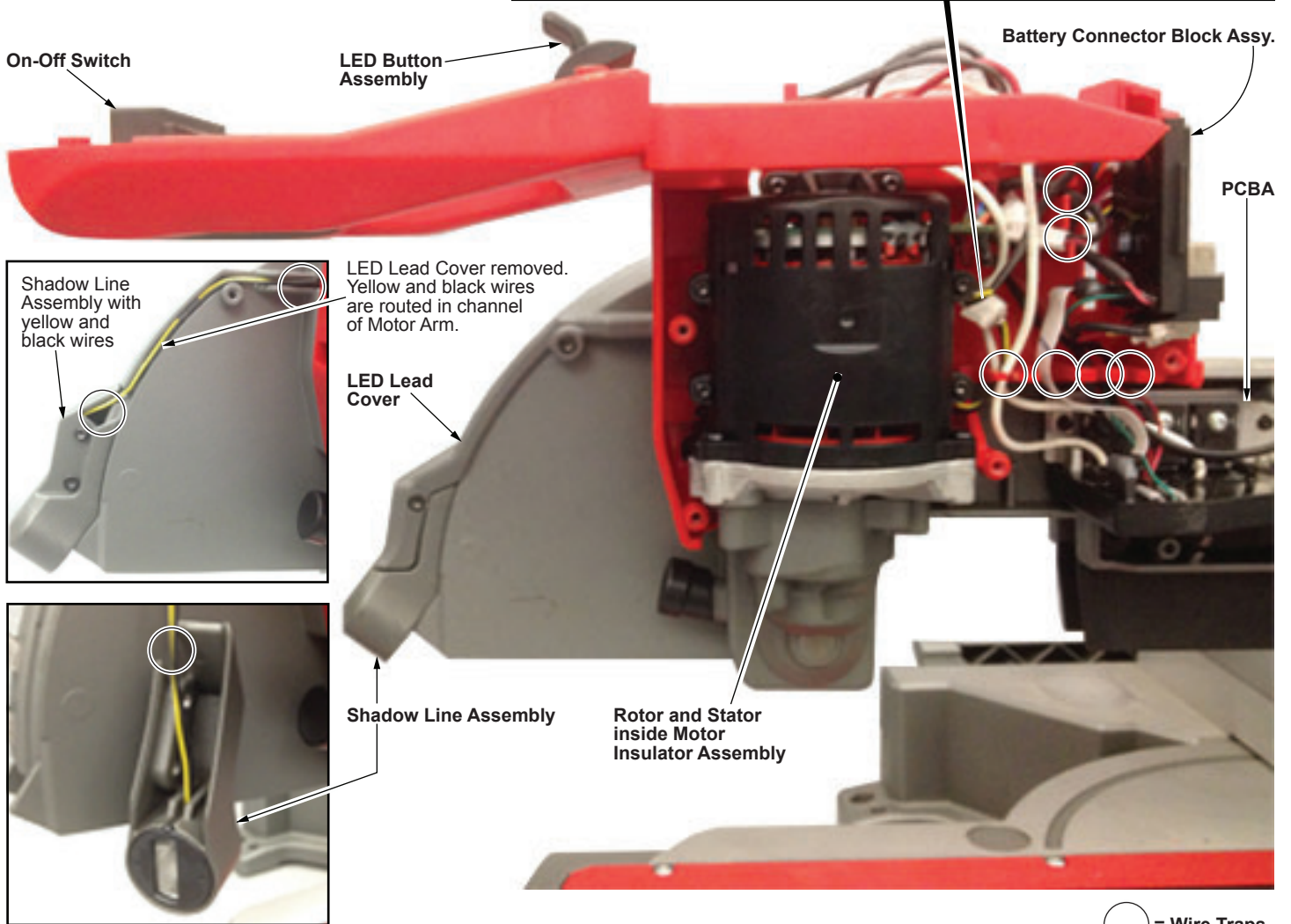
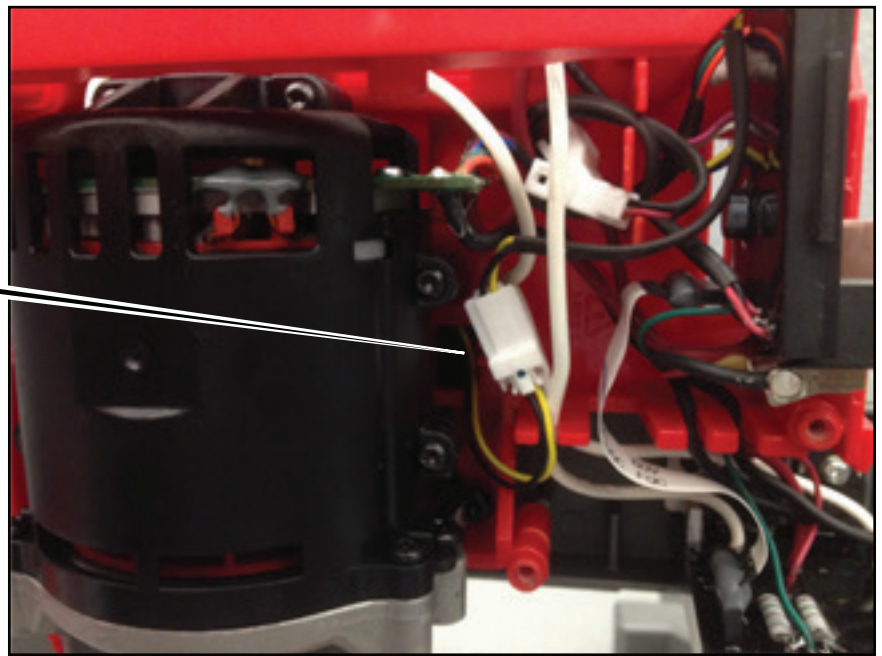
BE CAREFUL AND AVOID PINCHING WIRES BETWEEN THE HANDLE HALVES WHEN ASSEMBLING.





Hole in Left Housing

Route yellow and black wires from Shadow Line Assembly through hole in Left Housing. Join male connector to the female connector of the yellow and black PCBA wires. Place yellow/black wires in wire trap and secure behind the thick white wire.



12

○ = Wire Traps

AS AN AID TO REASSEMBLY, TAKE NOTICE OF WIRE ROUTING AND POSITION IN WIRE GUIDES AND TRAPS WHILE DISMANTLING TOOL.

BE CAREFUL AND AVOID PINCHING WIRES BETWEEN THE HANDLE HALVES WHEN ASSEMBLING.