

FLUSH VALVE ASSEMBLY

P/N: 7381557-400.0070A

- All trim components including tank-to-bowl gaskets, washers, nuts, clevis pin, and hair pin
- Includes a nut tightening tool

TO REMOVE FLUSH VALVE ASSEMBLY:

- Turn off water supply; flush toilet (remove all water from the tank)
- Remove tank nuts; do not remove second set of tank nuts (see **FIGURES 1 and 2**)
- Remove tank from bowl and lay tank on flat surface on backside to prevent scratching; no need to remove trip lever
- Remove hair pin and clevis pin from the RED trip lever arm (see **FIGURE 3**); this frees the yoke from the red arm
- Remove hair pin and clevis pin from the BLACK trip lever arm (see **FIGURE 3**); this frees the bead chain from the black arm
- Pull the refill tube from the overflow funnel connection
- Grab and remove tank to bowl gaskets from the underside of the tank
- Take the included tool and remove tank to bowl nut by turning *counterclockwise*
- Remove friction washer
- Remove flush valve assembly from the inside through the top of the tank

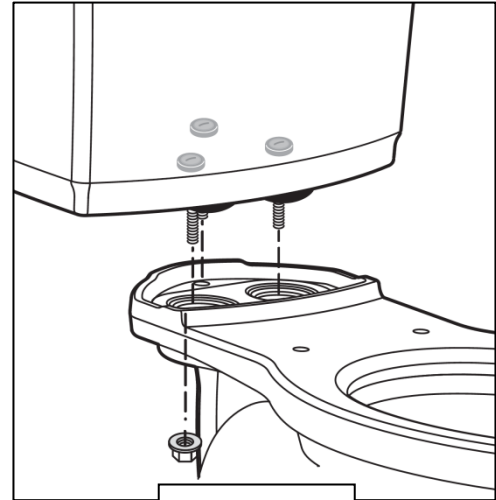


FIGURE 1

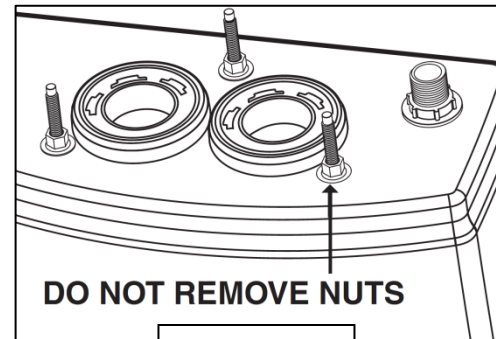


FIGURE 2

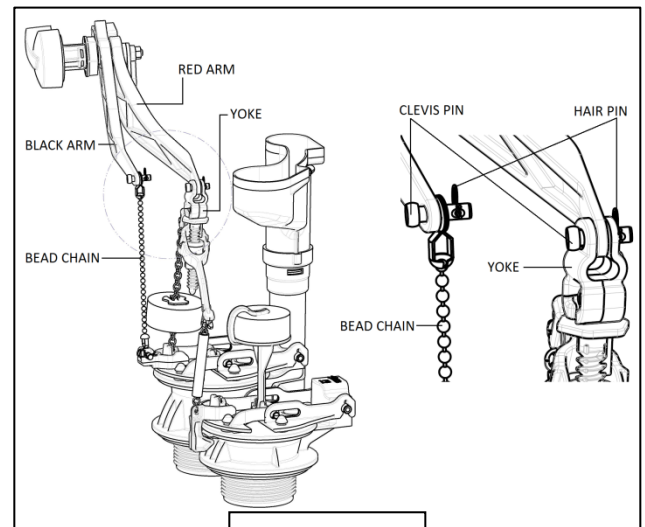


FIGURE 3

FLUSH VALVE ASSEMBLY

P/N: 7381557-400.0070A

TO RE-INSTALL:

- Install the valve, orient valve assembly so overflow funnel is positioned towards the back of the tank (see **FIGURE 4**)
- Hold the valve in the tank with one hand
- Place friction washer over threads on bottom of the tank (see **FIGURE 5**)
- Attach nut; orientation tabs must face away from tank (see **FIGURE 6**)
- Use supplied tool to tighten nuts to tank bottom, at least one hand tight
- Apply and work gaskets around the 6 retaining tabs on the nut so the inner rib on the gasket is captured between the tabs and the tank. Note the inner rib on the gasket is offset to one side. Be sure to orient the gasket with the inner rib towards the bottom of the tank. When done correctly, the gasket should not be compressed and should be held in place while installing the tank.
- Re-mount tank to bowl (see **FIGURE 1**)
- Re-attach the refill tube into the overflow funnel connection of the new valve
- Insert the BLACK trip lever arm in to the chain coupler of the bead chain; push the clevis pin through the arm and insert the hair pin (see **FIGURE 3**)
- Insert the RED trip lever arm in to the yoke of the teeter bar; push the clevis pin through the arm and insert the hair pin (see **FIGURE 3**)

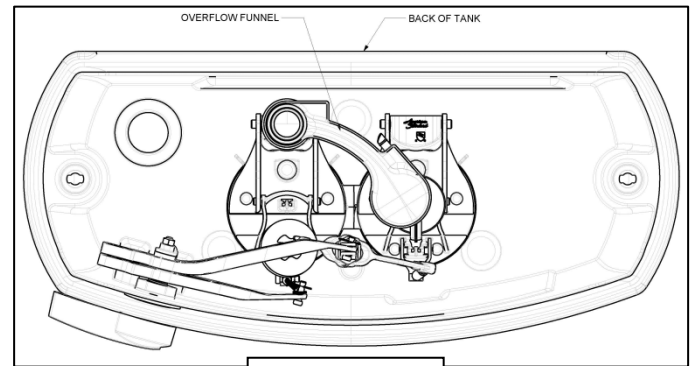


FIGURE 4

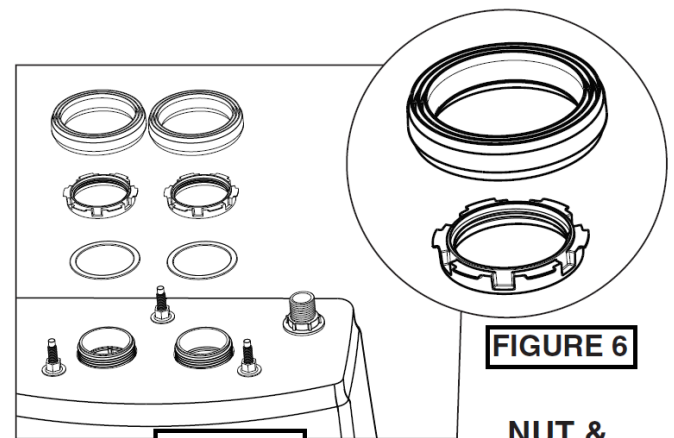


FIGURE 5

FIGURE 6

NUT & GASKET

FLUSH VALVE ASSEMBLY

P/N: 7381557-400.0070A

COMPLETE BY ADJUSTING THE SETTINGS:

- Depress trip lever handle all the way **(A)**.
- Adjust screw on the teeter bar **(B)** so rear frame **(C)** touches the frame stop **(D)**.
- Return trip lever handle **(A)** to rest position.
- Make sure hook **(E)** is fully engaged under tab on valve body **(F)**, if not, slightly adjust screw to make sure hook is engaged.
- Turn water supply on; adjust water level to specified dimension on tank liner sticker and flush 5 times to prime.

