

## Dimensional Document

# Viega PureFlow® Crimp PolyAlloy Fittings



This document is subject to updates. For the most current Viega technical literature please visit [www.viega.us](http://www.viega.us).

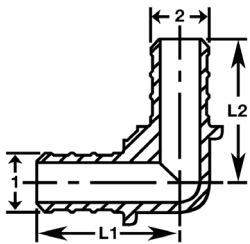


Viega products are designed to be installed by licensed and trained plumbing and mechanical professionals who are familiar with Viega products and their installation. **Installation by non-professionals may void Viega LLC's warranty.**

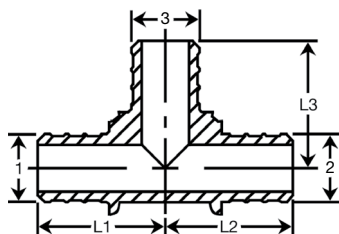


Zero Lead identifies Viega products meeting the lead free requirements of NSF 61-G through testing under NSF/ANSI 372 (0.25% or less maximum weighted average lead content).

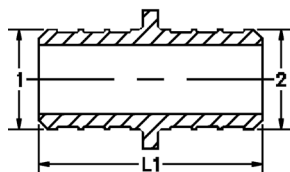
### Viega PureFlow Crimp 90° Elbow Zero Lead PolyAlloy - Model V5216



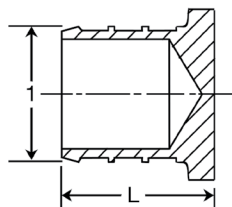
Part No.	Size (in) 1 2	L1 (in)	L2 (in)
43210	3/8 x 3/8	1.15	1.15
43220	1/2 x 1/2	1.15	1.15
43240	3/4 x 3/4	1.25	1.25
43242	3/4 x 1/2	1.25	1.25
43260	1 x 1	1.53	1.53

**Viega PureFlow Crimp Tee Zero Lead PolyAlloy - Model V5218**


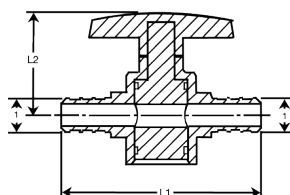
Part No.	Size (in)	L1 (in)	L2 (in)	L3 (in)
	1 2 3			
43500	3/8 x 3/8 x 3/8	1.16	1.16	1.16
43520	1/2 x 1/2 x 1/2	1.15	1.15	1.15
43334	1/2 x 1/2 x 3/4	1.25	1.25	1.15
43540	3/4 x 3/4 x 3/4	1.25	1.25	1.25
43433	3/4 x 1/2 x 1/2	1.25	1.15	1.25
43434	3/4 x 1/2 x 3/4	1.25	1.25	1.25
43443	3/4 x 3/4 x 1/2	1.15	1.15	1.25
43445	3/4 x 3/4 x 1	1.30	1.30	1.34
43544	1 x 3/4 x 3/4	1.37	1.36	1.36
43545	1 x 3/4 x 1	1.54	1.39	1.54
43553	1 x 1 x 1/2	1.33	1.33	1.32
43554	1 x 1 x 3/4	1.33	1.33	1.26
43560	1 x 1 x 1	1.53	1.53	1.53

**Viega PureFlow Crimp Zero Lead Coupling PolyAlloy - Model V5215**


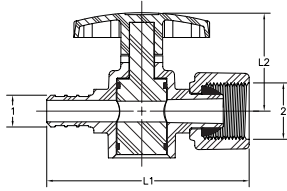
Part No.	Size (in)	L (in)
	1 2	
43402	3/8 x 3/8	1.52
43403	1/2 x 1/2	1.50
43332	1/2 x 3/8	1.52
43343	3/4 x 1/2	1.50
43353	1 x 1/2	1.70
43404	3/4 x 3/4	1.50
43354	1 x 3/4	1.70
43355	1 x 1	1.82

**Viega PureFlow Crimp Test Plug Zero Lead PolyAlloy - Model V5058**


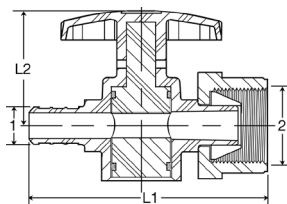
Part No.	Size (in)	L (in)
	1	
43702	3/8	0.76
43723	1/2	0.76
43744	3/4	0.95
43765	1	1.13

**Viega PureFlow Crimp Valve Zero Lead PolyAlloy 1/4 Turn - Model V5236**


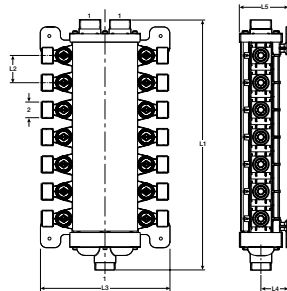
Part No.	Size (in)	L1 (in)	L2 (in)
	1		
43030	1/2	2.83	1.45
43040	3/4	3.00	1.45

**Viega PureFlow Crimp Stop Valve Straight Zero Lead PolyAlloy Crimp x Lav ¼ Turn - Model V5036.30**


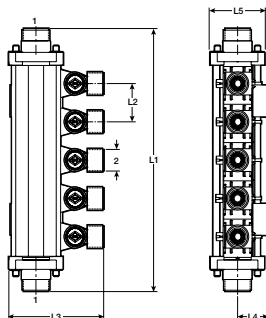
Part No.	Size (in)	L1 (in)	L2 (in)
	1 2		
43023	¾ x ½ Lav	3.00	1.45

**Viega PureFlow Crimp Stop Valve Straight Zero Lead PolyAlloy Crimp x Closet ¼ Turn - Model V5036.31**


Part No.	Size (in)	L1 (in)	L2 (in)
	1 2		
43002	¾ x ½ Closet	3.00	1.45
43003	½ x ½ Closet	3.00	1.45

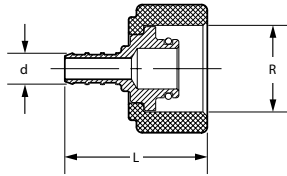
**Viega ManaBloc Distribution Manifold Zero Lead Crimp - Model V5030.5**


Part No.	Size (in)	Ports	L1 (in)	L2 (in)	L3 (in)	L4 (in)	L5 (in)
	1 2						
50244	1 x 5/8 NPSM	12	13.76	1.68	8.00	1.70	3.00
50143	1 x 5/8 NPSM	14	15.44	1.68	8.00	1.70	3.00
51618	1 x 5/8 NPSM	18	18.80	1.68	8.00	1.70	3.00
50243	1 x 5/8 NPSM	24	23.78	1.68	8.00	1.70	3.00
50303	1 x 5/8 NPSM	30	28.88	1.68	8.00	1.70	3.00
50363	1 x 5/8 NPSM	36	33.92	1.68	8.00	1.70	3.00

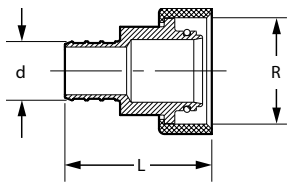
**Viega MiniBloc Zoning Manifold Zero Lead Crimp - Model V5031.5**


Part No.	Size (in)	Ports	L1 (in)	L2 (in)	L3 (in)	L4 (in)	L5 (in)
	1 2						
50033	1 x 5/8 NPSM	3	8.19	1.68	4.37	1.42	2.50
50043	1 x 5/8 NPSM	4	9.87	1.68	4.37	1.42	2.50
51063*	1 x 5/8 NPSM	5	11.55	1.68	4.37	1.42	2.50
50063	1 x 5/8 NPSM	6	13.23	1.68	4.37	1.42	2.50
51073*	1 x 5/8 NPSM	7	14.91	1.68	4.37	1.42	2.50
50083	1 x 5/8 NPSM	8	16.59	1.68	4.37	1.42	2.50
51003*	1 x 5/8 NPSM	10	19.95	1.68	4.37	1.42	2.50

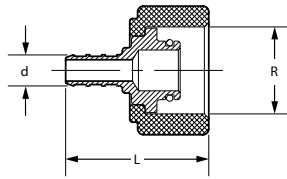
\*Manifold incorporates hot and cold ports.

**Viega PureFlow Crimp Port Adapter Zero Lead Brass For ManaBloc Crimp x Port - Model V5039ZL**


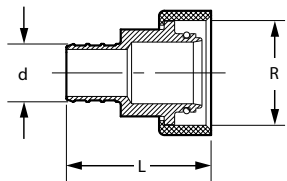
Part No.	Size (in)	L (in)
	1 2	
46624	3/8 x 1/2 Port	1.58
46634	1/2 x 1/2 Port	1.58

**Viega PureFlow Crimp Supply Adapter Zero Lead Brass For ManaBloc Crimp x Supply - Model V5034ZL**


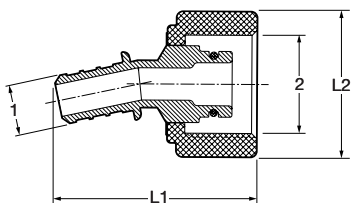
Part No.	Size (in)	L (in)
	1 2	
46414	3/4 x 1 ManaBloc	1.66
46416	1 x 1 ManaBloc	1.84

**Viega PureFlow Crimp Port Adapter Zero Lead PolyAlloy for ManaBloc Crimp x Port - Model V5039.1**


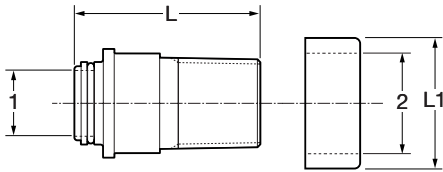
Part No.	Size (in)	L (in)
	1	
50023	3/8 x 1/2 Port	1.58
50133	1/2 x 1/2 Port	1.58
51123	1/2 x 3/8 Port	1.58
51133	3/8 x 3/8 Port	1.58

**Viega PureFlow Crimp Supply Adapter Zero Lead PolyAlloy for ManaBloc Crimp x Supply - Model V5213**


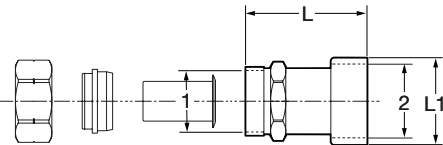
Part No.	Size (in)	L (in)
	1 2	
50141	3/4 x 1 ManaBloc	1.66
50151	1 x 1 ManaBloc	1.84

**Viega PureFlow Crimp Port Sweep Adapter Zero Lead PolyAlloy for ManaBloc Crimp x Port - Model V5039.2**


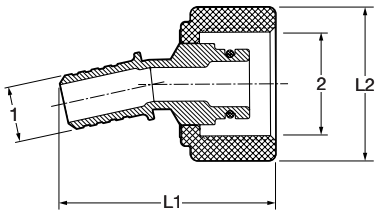
Part No.	Size (in)	L1 (in)	L2 (in)
	1 2		
50260	1/2 x 1/2 Port	1.97	1.42
50261	3/8 x 1/2 Port	1.96	1.42

**Viega PureFlow ManaBloc Supply Adapter Zero Lead Brass MPT x Supply - Model V5033ZL**


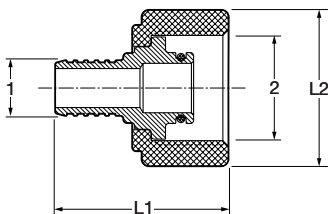
Part No.	Size (in)	L (in)	L1 (in)
	1 2		
46646	3/4 MPT x 1 ManaBloc	2.14	1.43
46656	1 MPT x 1 ManaBloc	2.34	1.43

**Viega PureFlow ManaBloc Supply Adapter Zero Lead Brass CTS x Supply - Model V5032ZL**


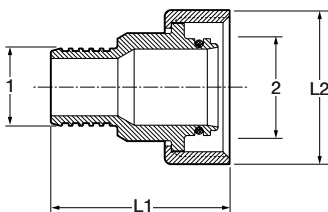
Part No.	Size (in)	L (in)	L1 (in)
	1 2		
46346	3/4 CTS x 1 ManaBloc	2.00	1.43

**Viega PureFlow Crimp Port Sweep Adapter Zero Lead PolyAlloy for ManaBloc Polybutylene x Port - Model V5039.2**


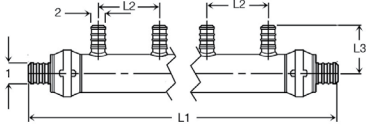
Part No.	Size (in)	L (in)	L1 (in)
	1 2		
50264	1/2 PB x 1/2 Port	1.99	1.42
50265	3/8 PB x 1/2 Port	1.98	1.42

**Viega PureFlow Port Adapter Zero Lead Bronze for ManaBloc Polybutylene x Port - Model V5613.8**


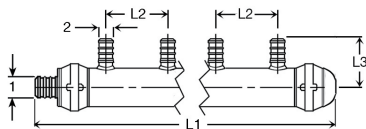
Part No.	Size (in)	L1 (in)	L2 (in)
	1 2		
50267	3/8 PB x 1/2 Port	1.58	1.42
50266	1/2 PB x 1/2 Port	1.57	1.42

**Viega PureFlow Supply Adapter Zero Lead Bronze for ManaBloc Polybutylene x Supply - Model V5035ZL**


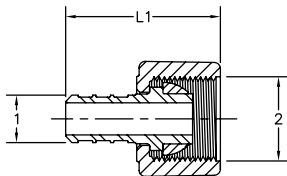
Part No.	Size (in)	L1 (in)	L2 (in)
	1 2		
50268	3/4 PB x 1 ManaBloc	1.66	1.43
50269	1 PB x 1 ManaBloc	1.66	1.43

**Viega PureFlow Crimp Manifold Zero Lead PolyAlloy Flow Through - Model V5031.2**


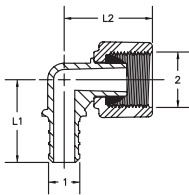
Part No.	Size (in)	Outlets	L1 (in)	L2 (in)	L3 (in)
	1 2				
65152	$\frac{3}{4}$ x $\frac{1}{2}$	2	6.50	2.00	1.55
65153	$\frac{3}{4}$ x $\frac{1}{2}$	3	8.50	2.00	1.55
65154	$\frac{3}{4}$ x $\frac{1}{2}$	4	10.50	2.00	1.55
65254	1 x $\frac{3}{4}$ x $\frac{1}{2}$	4	10.60	2.00	1.55
65256	1 x $\frac{1}{2}$	6	14.80	2.00	1.55
65258	1 x $\frac{1}{2}$	8	18.80	2.00	1.55

**Viega PureFlow Crimp Manifold Zero Lead PolyAlloy Closed - Model V5031.22**


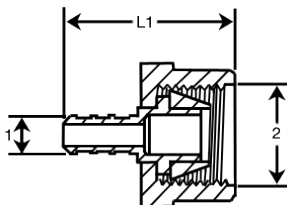
Part No.	Size (in)	Outlets	L1 (in)	L2 (in)	L3 (in)
	1 2				
65104	$\frac{3}{4}$ x $\frac{1}{2}$	4	10.10	2.00	1.55
65206	1 x $\frac{1}{2}$	6	14.30	2.00	1.55

**Viega PureFlow Crimp Lav Adapter Zero Lead PolyAlloy Crimp x Lav - Model V5263**


Part No.	Size (in)	L1 (in)
	1 2	
43323	$\frac{3}{8}$ x $\frac{1}{2}$ Lav	1.52
43333	$\frac{1}{2}$ x $\frac{1}{2}$ Lav	1.46
43344	$\frac{3}{4}$ x $\frac{3}{4}$ Lav	1.62

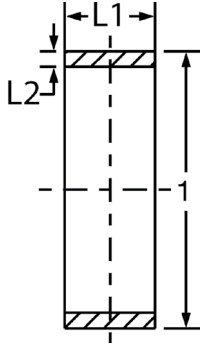
**Viega PureFlow Crimp Lav Adapter 90° Elbow Zero Lead PolyAlloy Crimp x Lav - Model V5255**


Part No.	Size (in)	L1 (in)	L2 (in)
	1 2		
43232	$\frac{3}{8}$ x $\frac{1}{2}$ Lav	1.35	1.15
43233	$\frac{1}{2}$ x $\frac{1}{2}$ Lav	1.35	1.15
43244	$\frac{3}{4}$ x $\frac{3}{4}$ Lav	1.42	1.25

**Viega PureFlow Crimp Closet Adapter Zero Lead PolyAlloy Crimp x Closet - Model V5257**


Part No.	Size (in)	L1 (in)
	1 2	
43300	$\frac{3}{8}$ x $\frac{1}{2}$ Closet	1.60
43320	$\frac{1}{2}$ x $\frac{1}{2}$ Closet	1.60

## Viega PureFlow Crimp Ring Copper - Model V5019.9



Part No.	Size (in) 1 2	L1 (in)	L2 (in)
43600	3/8 SDR9	0.32	0.05
43620	1/2 SDR9	0.32	0.05
43640	3/4 SDR9	0.32	0.05
43660	1 SDR9	0.36	0.04

**V** Viega LLC  
585 Interlocken Blvd.  
Broomfield, CO 80021

Phone (800) 976-9819  
[www.viega.us](http://www.viega.us)

DD-PF 0920 PureFlow Crimp PolyAlloy Fittings

