

LittleGIANT®




Patent Pending


Pit+Plus Installation Guide


Before Getting Started


Read and follow safety instructions. Refer to product data plate(s) for additional operating instructions and specifications.

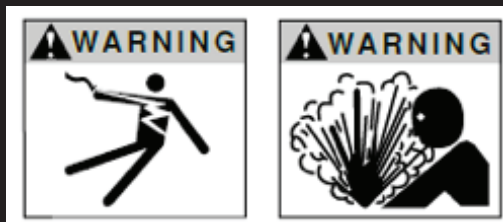
This is the safety alert symbol. When you see this  symbol on your pump or in this manual, look for one of the following signal words and be alert to the potential for personal injury:

 DANGER warns about hazards that will cause serious personal injury, death or major property damage if ignored.

 WARNING warns about hazards that can cause serious personal injury, death or major property damage if ignored.

 CAUTION warns about hazards that will or can cause minor personal injury or major property damage if ignored.

 NOTICE indicates special instructions which are important but not related to hazards. Carefully read and follow all safety instructions in this manual and on pump.



WARNING

RISK OF ELECTRIC SHOCK - This pump is supplied with a grounding conductor and grounding type attachment plug. To reduce risk of electric shock, be certain that it is connected only to a properly grounded, grounding-type receptacle. Disconnect power before servicing.

This equipment should be installed by technically qualified personnel. Failure to install it in compliance with national and local electrical codes and within Franklin Electric recommendations may result in electrical shock or fire hazard, unsatisfactory performance, or equipment failure.

This equipment must not be used by children or persons with reduced physical, sensory or mental abilities, or lacking in experience and expertise, unless supervised or instructed. Children may not use the equipment, nor may they play with the equipment or in the immediate vicinity.

If the power cord is damaged, it must only be replaced by qualified personnel.

CAUTION

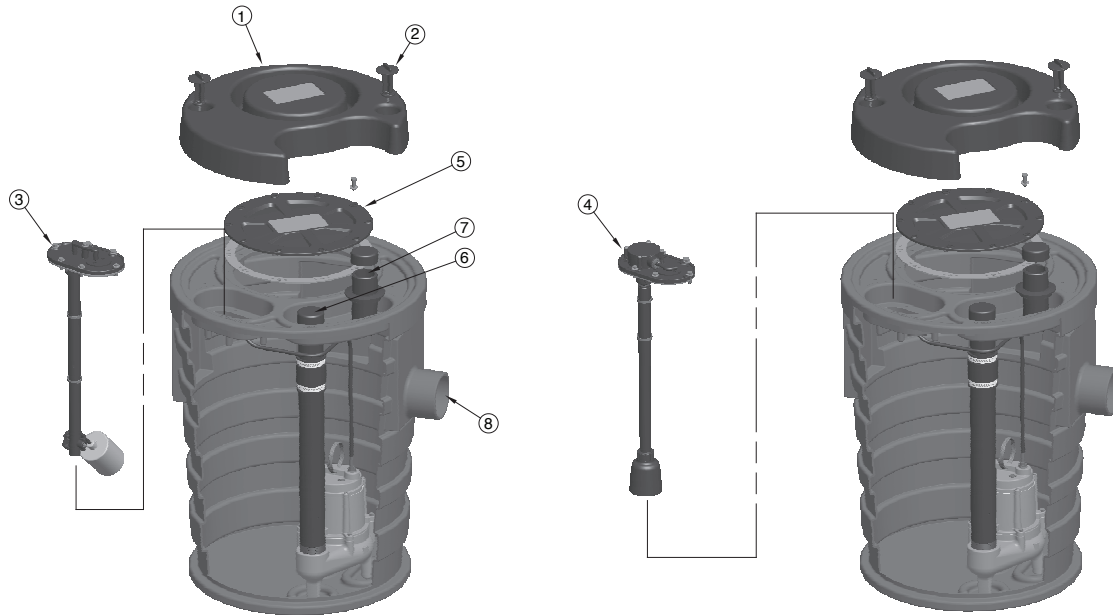
- Keep work area clean, well-lit, and uncluttered.
- Keep safety labels clean and in good condition.
- Wear safety glasses while installing or performing maintenance on pump.
- Do not run pump dry. Fill pump with water before starting or pump will be damaged.
- Make sure all ELECTRICAL POWER IS OFF before connecting any electrical wires.

Table of Contents

Before Getting Started	2
Features	4
Start Up Procedure	5
Troubleshooting Guide	7
Replacement Parts	9
Pit+Plus Jr. with ECM.	10
Pit+Plus Jr. with Floats.	11
Pit+Plus Sr. with ECM	12
Pit+Plus Sr. with Floats	13
ECM	14
Maintenance	15
Warranty.	17

Pit+Plus™ Premium Simplex Package Systems

Features



Finish Cover (1) - A finish cover is provided with each basin to help protect the basin top from construction debris during installation. After basin installation, the cover can be removed for cleaning then reinstalled for a clean and finished look.

Finish Flange Bolts (2) – Two flange bolts are provided to secure the finish cover.

Float Controls Cover (3) - The controls cover allows access to level control float switch and optional alarm.

External Control Module (ECM™) (4) - The optional ECM™ is an advanced control switch for a sewage basin.

Pump Access Cover (5) - The pump access cover allows access to pump for removal and installation. Removal of the access cover also allows the installer to monitor operation of the level control float switch and the optional alarm float switch during installation or service.

Discharge and Vent Pipe Slip-Fit Connections (6 & 7) - The basin assembly is supplied pre-plumbed with schedule 80 PVC discharge and vent pipe ready for immediate connection to plumbing.

External Intake Hub (8) - Designed for a standard 4" slip-fit connection allowing for easy installation.

Pit+Plus™ Premium Simplex Package Systems

Start Up Procedure

Step 1

Remove finish cover and set aside.

Step 2

Remove bolts and washers from pump access cover and set cover aside.

Step 3

Observe position of pump. The pump should be upright with standoff feet located within the three (3) integral torque stops (Figure 1).

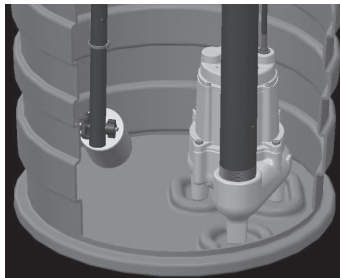


Figure 1

Step 4

Verify that the pump discharge pipe is securely connected to the exit pipe (inside the basin) with the flexible coupling. If the pump is not in the correct position or the discharge pipe is detached, reposition pump with pump legs located within the three torque stop features (raised molded features on the bottom of the basin) and reconnect discharge pipe to exit pipe with flexible coupling and band clamps.

Step 5

Examine level control float switch and optional alarm float (if included). Verify the float pole is secured to bottom of control cover and there are no obstructions that might interfere with the operation of the level control float switch or alarm float switch.



Figure 2

Note: The float pole assembly (Figure 2) is assembled at the factory to specifications for optimal operation. The cord grips are installed for the primary and alarm float (if equipped) tethered at specified length(s). Changing the length(s) could result in system failure. Reference the float switch and/or alarm switch instruction manual for additional installation and operation information.

Pit+Plus™ Premium Simplex Package Systems

Step 6

External Level Control Option - If the basin is equipped with an External Control Module (ECM™), verify that the sensor tube extending from bottom of control module (Figure 3) is not damaged.

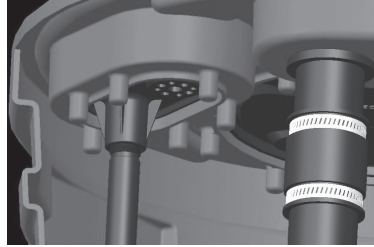


Figure 3

Note: The cord/plug for the ECM™ (Figure 3) must be unobstructed at the plug end, to allow for air to pass through the vent tube.

Step 7

Remove temporary pipe caps from the vent and discharge pipes.

Once the above steps are completed, plumbing connections and electrical connections can be made.

Step 8

Connect the basin discharge pipe to drain pipe.

⚠ CAUTION

A check valve, not included, must be installed near basin to prevent backflow into basin. For best performance of check valves when handling solids, install in a horizontal position or at an angle not more than 45 degrees.

Step 9

Connect the Pit+Plus® vent pipe to vent pipe.

Step 10

Connect piggyback plug to a 115 V outlet. Plug the pump power cord into back of piggyback plug (Figure 4).

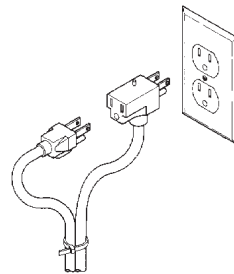


Figure 4

Step 11

Verify Operation - Once all plumbing and electrical connections have been made, fill basin with water to activate controls and pump. If the unit does not operate, refer to the troubleshooting guide located in the pump owner's manual.

Pit+Plus™ Premium Simplex Package Systems

Pit+Plus Troubleshooting Guide

Condition	Possible Cause	Corrective Action
Pump will not operate	Circuit breaker tripped or power turned off	Reset circuit breaker or correct electrical supply
	Switch failure	1. Disconnect electrical power
		2. Remove piggyback plug from outlet
		3. Plug pump power cable into outlet
		4. Turn on electrical power
	5. If pump operates the switch is in failure mode	
Pump will operate, but water/waste will not exit basin	Blocked discharge pipe	Remove blockage
	Blocked vent pipe	Remove blockage Note: Air admittance valves can create problems with sealed sewage basins. They restrict the free passage of air in the vent pipe that is needed for efficient pumping.
	Pump is air-locked	1. Consult pump installation instructions
2. 3/16" hole in discharge pipe (inside basin) is not present or is blocked. This allows air to escape the pump volute		

Pit+Plus™ Premium Simplex Package Systems

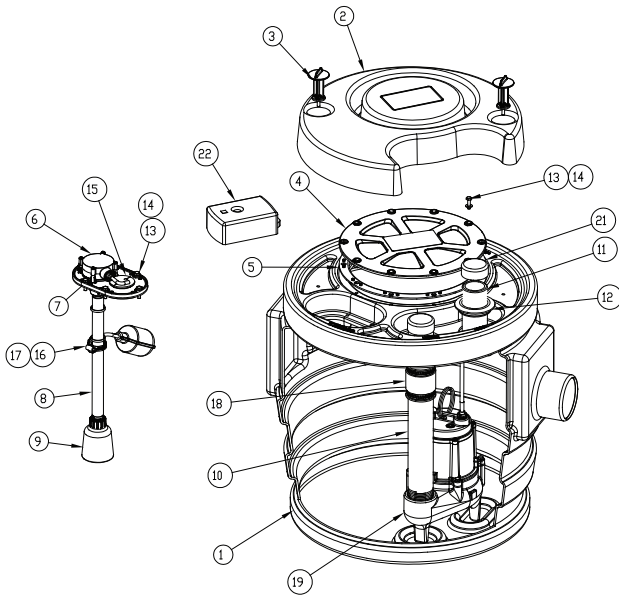
ECM Troubleshooting Guide

Condition	Possible Cause	Corrective Action
<p>Pump does not shut off. NOTE: Before troubleshooting automatic control, check to see that pump operates on manual control. To do this, disconnect electrical power, remove piggyback plug from the outlet, plug pump power cable into outlet, turn on electrical power, if pump operates the switch is in failure mode.</p>	Diaphragm switch	Replace switch
	Weak or hardened rubber diaphragm	Replace rubber diaphragm
	Plugged vent tube	Clear vent tube of any obstructions
	Dirt or sediment lodged between retainer ring and rubber diaphragm causing contact to remain closed	Clean area around rubber diaphragm
	Pump is air locked	Shut power off for approximately 1 minute, then restart. Repeat several times to clear air from pump. If system includes a check valve, a 3/16" hole should be drilled in discharge pipe approximately 2" above discharge connections
	Liquid inflow matches pump capacity	Larger pump required
	Defective switch	Disconnect switch, check with ohmmeter, open-infinite resistance, closed-zero
	Loose connection in level control wiring	Check control wiring
<p>Pump runs but does not discharge liquid</p>	Check valve installed backwards	Check flow indicating arrow on check valve body to ensure it is installed properly
	Check valve stuck or unplugged	Remove check valve and inspect for proper operation
	Lift too high for pump	Check rating table
	Inlet to impeller plugged	Pull pump and clean
	Pump is air locked	(See corrective action above.)
<p>Pump does not deliver rated capacity.</p>	Lift too high for pump	Check rated pump performance
	Low voltage, speed too slow	Check for proper supply voltage to make certain it corresponds to nameplate voltage
	Impeller or discharge pipe is clogged	Pull pump and clean. Check pipe for scale or corrosion
	Impeller wear due to abrasives	Replace worn impeller
<p>Pump cycles continually</p>	No check valve in long discharge pipe allowing liquid to drain back into sump	Install a check valve in discharge line
	Check valve leaking	Inspect check valve for correct operation
	Basin too small for inflow	Install larger basin

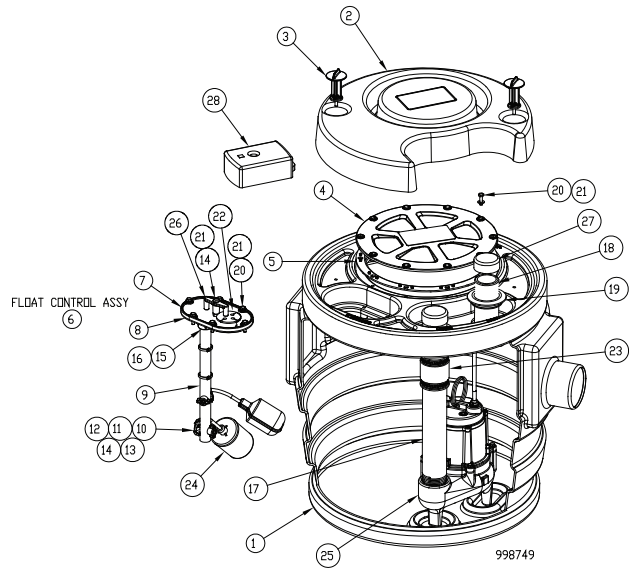
Pit+Plus™ Premium Simplex Package Systems

Replacement Parts

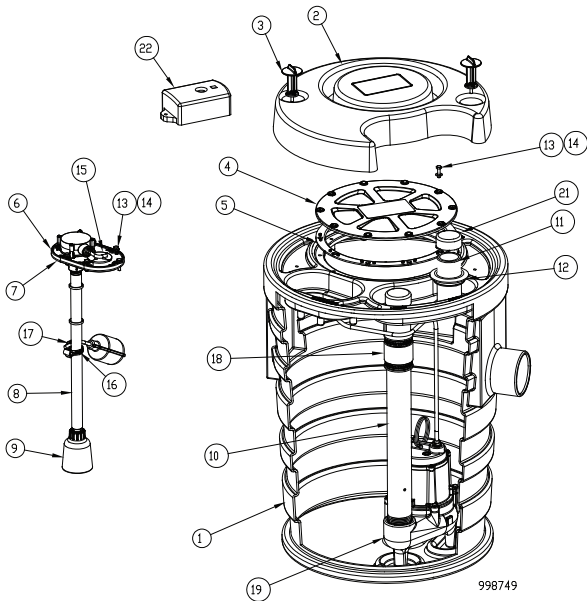
Replacement Parts (Pit+Plus Jr. with ECM)



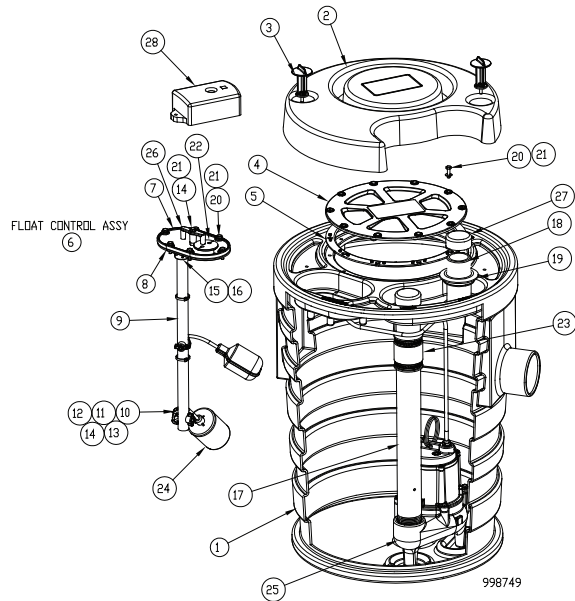
Replacement Parts (Pit+Plus Jr. with Floats)



Replacement Parts (Pit+Plus Sr. with ECM)



Replacement Parts (Pit+Plus Sr. with Floats)



Pit+Plus™ Premium Simplex Package Systems

Replacement Parts (Pit+Plus Jr. with ECM)

REPLACEMENT PARTS				
ITEM NO.	PART NO.	DESCRIPTION		QTY.
1	113221101	Basin 2V2D		1
	113221102	Basin 3V3D		1
	113221103	Basin 2V3D		1
	113221104	Basin 3V2D		1
2	113268	Finish Cover		1
3	113269	Finish Cover Wing Bolt		2
4	113250	Pump Access Cover		1
5	113251	Pump Access Cover Gasket		1
6	113277	ECM Assembly		1
7	113253	Controls Cover Gasket		1
8	113259	Pressure Pole Jr.		1
9	113266	Pressure Bell		1
10	113562	Discharge Pipe 2"	(2V2D and 3V2D Models)	1
	113564	Discharge Pipe 3"	(2V2D and 3V2D Models)	1
11	113565	2" x 6" Vent/Discharge Pipe	(2V2D Models)	2
			(2V3D and 3D2V Models)	1
	113566	3" x 6" Vent/Discharge Pipe	(3V3D Models)	2
			(2V3D and 3V2D Models)	1
12	925033	Grommet 2"	(2V2D Models)	2
			(2V3D and 3V2D Models)	1
	925023	Grommet 3"	(3V3D Models)	2
			(2V3D and 3V2D Models)	1
13	1117617	1/4 - 20 x 1" Bolt		16
14	1127502	1/4" Flat Washer		16
15	925033	Cord Grommet 1 Hole	(For Models without Alarm)	1
	925014	Cord Grommet 2 Hole	(For Models with Alarm)	1
16	116710	Stainless Band Clamp for Alarm Float	(For Models with Alarm)	1
17	113254	Cord Clamp	(For Models with Alarm)	1
18	945015	Fernco 3"	For 2V3D and 3V3D Models	1
	945007	Fernco 2"	For 3V2D and 2V2D Models	1
19	509203	9SN-CIM 115 V 60 Hz 20 FT 2"	Refer to Basin Model No.	1
	509226	9SN-CIM 115 V 60 Hz 20 FT 3"	Refer to Basin Model No.	1
	511322	10SN-CIM 115 V 60 Hz 20 FT 2"	Refer to Basin Model No.	1
	511344	10SN-CIM 115 V 60 Hz 20 FT 3"	Refer to Basin Model No.	1
20	113256	Control Cover Handle		1
21	929604	2" Caplug	(2V2D Models)	2
			(2V3D and 3D2V Models)	1
	929605	3" Caplug	(3V3D Models)	2
			(2V3D and 3V2D Models)	1
22	513288	HWAB Alarm	Optional	1
	513273	303HWXT Alarm	Optional	1

Pit+Plus™ Premium Simplex Package Systems

Replacement Parts (Pit+Plus Jr. with Floats)

REPLACEMENT PARTS				
ITEM NO.	PART NO.	DESCRIPTION		QTY.
1	113221101	Basin 2V2D		1
	113221102	Basin 3V3D		1
	113221103	Basin 2V3D		1
	113221104	Basin 3V2D		1
2	113268	Finish Cover		1
3	113269	Finish Cover Wing Bolt		2
4	113250	Pump Access Cover		1
5	113251	Pump Access Cover Gasket		1
6	113274101	Float Control Assembly		1
7	113252	Float Control Cover		1
8	113253	Control Cover Gasket		1
9	113258	Float Pole Sr.		1
10	929059	Wing Thumb Knob		1
			(For Models with Alarm)	2
11	920064	Lock Nut		1
			(For Models with Alarm)	2
12	113254	Cord Clamp		1
			(For Models with Alarm)	2
13	282225112	1/4-20 x 2.25 Hex Bolt SST		1
			(For Models with Alarm)	2
14	282225110	1/4-20 x 1-3/4 Hex Bolt SST		16
15	929055	Clevis Pin		1
16	929056	Cotter Circle		1
17	113261	Discharge Pipe 2"	(2V2D and 3V2D Models)	1
	113563	Discharge Pipe 3"	(2V3D and 3V3D Models)	1
18	113565	2" x 6" Vent/Discharge Pipe	(2V2D Models)	2
			(2V3D and 3D2V Models)	1
	113566	3" x 6" Vent/Discharge Pipe	(3V3D Models)	2
			(2V3D and 3V2D Models)	1
19	925033	Grommet 2"	(2V2D Models)	2
			(2V3D and 3D2V Models)	1
	925023	Grommet 3"	(3V3D Models)	2
			(2V3D and 3V2D Models)	1
20	1117617	1/4-20 x 1" Bolt		17
21	1127502	1/4" Flat Washer		17
22	925014	Cord Grommet 2 Hole		1
	925010	Cord Grommet 3 Hole	(For Models with Alarm)	1
23	945015	Fernco 3"	For 2V3D and 3V3D Models	1
	945007	Fernco 2"	For 3V2D and 2V2D Models	1
24	950475	Control Float		17
25	509203	9SN-CIM 115 V 60 Hz 20 FT 2"	Refer to Basin Model No.	1
	509226	9SN-CIM 115 V 60 Hz 20 FT 3"	Refer to Basin Model No.	1
	511322	10SN-CIM 115 V 60 Hz 20 FT 2"	Refer to Basin Model No.	1
	511344	10SN-CIM 115 V 60 Hz 20 FT 3"	Refer to Basin Model No.	1
26	113256	Control Cover Handle		1
27	929604	2" Caplug	(2V2D Models)	2
			(2V3D and 3D2V Models)	1
	929605	3" Caplug	(3V3D Models)	2
			(2V3D and 3V2D Models)	1
28	513288	HWAB Alarm	Optional	1
	513273	303HWXT Alarm	Optional	1

Pit+Plus™ Premium Simplex Package Systems

Replacement Parts (Pit+Plus Sr. with ECM)

REPLACEMENT PARTS				
ITEM NO.	PART NO.	DESCRIPTION		QTY.
1	113221101	Basin 2V2D		1
	113221102	Basin 3V3D		1
	113221103	Basin 2V3D		1
	113221104	Basin 3V2D		1
2	113268	Finish Cover		1
3	113269	Finish Cover Wing Bolt		2
4	113250	Pump Access Cover		1
5	113251	Pump Access Cover Gasket		1
6	113277	ECM Assembly		1
7	113253	Controls Cover Gasket		1
8	113259	Pressure Pole Jr.		1
9	113266	Pressure Bell		1
10	113562	Discharge Pipe 2"	(2V2D and 3V2D Models)	1
	113564	Discharge Pipe 3"	(2V2D and 3V2D Models)	1
11	113565	2" x 6" Vent/Discharge Pipe	(2V2D Models)	2
			(2V3D and 3D2V Models)	1
	113566	3" x 6" Vent/Discharge Pipe	(3V3D Models)	2
			(2V3D and 3V2D Models)	1
12	925033	Grommet 2"	(2V2D Models)	2
			(2V3D and 3V2D Models)	1
	925023	Grommet 3"	(3V3D Models)	2
			(2V3D and 3V2D Models)	1
13	1117617	1/4 - 20 x 1" Bolt		16
14	1127502	1/4" Flat Washer		16
15	925033	Cord Grommet 1 Hole	(For Models without Alarm)	1
	925014	Cord Grommet 2 Hole	(For Models with Alarm)	1
16	116710	Stainless Band Clamp for Alarm Float	(For Models with Alarm)	1
17	113254	Cord Clamp	(For Models with Alarm)	1
18	945015	Fernco 3"	For 2V3D and 3V3D Models	1
	945007	Fernco 2"	For 3V2D and 2V2D Models	1
19	509203	9SN-CIM 115 V 60 Hz 20 FT 2"	Refer to Basin Model No.	1
	509226	9SN-CIM 115 V 60 Hz 20 FT 3"	Refer to Basin Model No.	1
	511322	10SN-CIM 115 V 60 Hz 20 FT 2"	Refer to Basin Model No.	1
	511344	10SN-CIM 115 V 60 Hz 20 FT 3"	Refer to Basin Model No.	1
20	113256	Control Cover Handle		1
21	929604	2" Caplug	(2V2D Models)	2
			(2V3D and 3D2V Models)	1
	929605	3" Caplug	(3V3D Models)	2
			(2V3D and 3V2D Models)	1
22	513288	HWAB Alarm	Optional	1
	513273	303HWXT Alarm	Optional	1

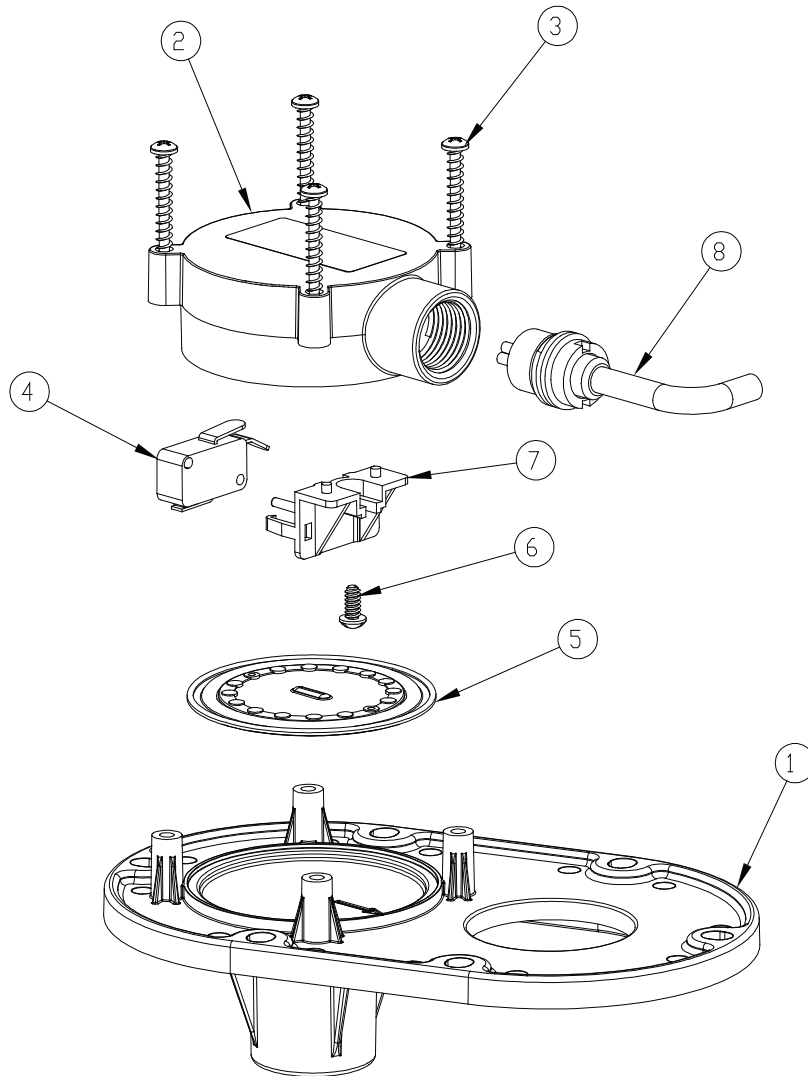
Pit+Plus™ Premium Simplex Package Systems

Replacement Parts (Pit+Plus Sr. with Floats)

REPLACEMENT PARTS				
ITEM NO.	PART NO.	DESCRIPTION		QTY.
1	113221101	Basin 2V2D		1
	113221102	Basin 3V3D		1
	113221103	Basin 2V3D		1
	113221104	Basin 3V2D		1
2	113268	Finish Cover		1
3	113269	Finish Cover Wing Bolt		2
4	113250	Pump Access Cover		1
5	113251	Pump Access Cover Gasket		1
6	113274101	Float Control Assembly		1
7	113252	Float Control Cover		1
8	113253	Control Cover Gasket		1
9	113258	Float Pole Sr.		1
10	929059	Wing Thumb Knob		1
			(For Models with Alarm)	2
11	920064	Lock Nut		1
			(For Models with Alarm)	2
12	113254	Cord Clamp		1
			(For Models with Alarm)	2
13	282225112	1/4-20 x 2.25 Hex Bolt SST		1
			(For Models with Alarm)	2
14	282225110	1/4-20 x 1-3/4 Hex Bolt SST		16
15	929055	Clevis Pin		1
16	929056	Cotter Circle		1
17	113261	Discharge Pipe 2"	(2V2D and 3V2D Models)	1
	113563	Discharge Pipe 3"	(2V3D and 3V3D Models)	1
18	113565	2" x 6" Vent/Discharge Pipe	(2V2D Models)	2
			(2V3D and 3D2V Models)	1
	113566	3" x 6" Vent/Discharge Pipe	(3V3D Models)	2
			(2V3D and 3V2D Models)	1
19	925033	Grommet 2"	(2V2D Models)	2
			(2V3D and 3D2V Models)	1
	925023	Grommet 3"	(3V3D Models)	2
			(2V3D and 3V2D Models)	1
20	1117617	1/4-20 x 1" Bolt		17
21	1127502	1/4" Flat Washer		17
22	925014	Cord Grommet 2 Hole		1
	925010	Cord Grommet 3 Hole	(For Models with Alarm)	1
23	945015	Fernco 3"	For 2V3D and 3V3D Models	1
	945007	Fernco 2"	For 3V2D and 2V2D Models	1
24	950475	Control Float		17
25	509203	9SN-CIM 115 V 60 Hz 20 FT 2"	Refer to Basin Model No.	1
	509226	9SN-CIM 115 V 60 Hz 20 FT 3"	Refer to Basin Model No.	1
	511322	10SN-CIM 115 V 60 Hz 20 FT 2"	Refer to Basin Model No.	1
	511344	10SN-CIM 115 V 60 Hz 20 FT 3"	Refer to Basin Model No.	1
26	113256	Control Cover Handle		1
27	929604	2" Caplug	(2V2D Models)	2
			(2V3D and 3D2V Models)	1
	929605	3" Caplug	(3V3D Models)	2
			(2V3D and 3V2D Models)	1
28	513288	HWAB Alarm	Optional	1
	513273	303HWXT Alarm	Optional	1

Pit+Plus™ Premium Simplex Package Systems

Replacement Parts (ECM)



REPLACEMENT PARTS			
ITEM NO.	PART NO.	DESCRIPTION	QTY.
1	113264	ECM Housing	1
2	113263	ECM Cover	1
3	902511	Screw #10 x 1-1/8 SST	4
4	950320	Switch	1
5	108125	Diaphragm	1
6	902404	Switch Holder Screw	1
7	108202	Switch Holder	1
8	951060	Wiring Harness 115 V 18 FT	1

Pit+Plus™ Premium Simplex Package Systems

Maintenance

Pump Removal and Installation

Step 1

Disconnect pump and switch from power supply

Step 2

Remove pump access cover and set aside

Step 3

Remove cord grommet from the switch access cover then separate the pump power cord from the grommet.

Step 4

Loosen the two (2) band clamps on the flexible coupling connecting the pump discharge pipe to the basin discharge pipe.

Step 5

Slide flexible coupling down to allow the pump and lower discharge assembly to be removed from basin.

Step 6

Feed power cord through the cord grommet opening and remove pump.

Step 7

Remove discharge pipe from pump and install on replacement pump.

Step 8

Install replacement pump into basin. Position pump so that the lower discharge pipe aligns with the basin discharge pipe.

Step 9

Position flexible adapter so that it is centered on the lower and upper discharge pipes and tighten band clamps.

Step 10

Feed power cord through the cord grommet opening and reinstall cord grommet. Caution: Route the pump cord behind the discharge pipe and remove any cord slack that might potentially interfere with control float or optional alarm float operation.

Float Switch and Alarm Switch - Removal and Installation

Step 1

Disconnect pump and switch from power supply

Step 2

Remove cord grommet from switch housing

Step 3

Remove all cords from cord grommet.

Pit+Plus™ Premium Simplex Package Systems

Step 4

Remove the six (6) bolts securing the switch module to the basin and remove. Feed pump cord through the cord grommet opening until the switch module is free.

Step 5

Remove float switch by loosening the plastic wing nut opposite the cord grip. Loosen the wing nut until the cord can be removed from the cord grip. Note: It is not necessary to remove the wing nut completely to remove float cord.

Step 6

Install new float switch. The cord tether length (distance between the cord grip and the float housing) should be 3.5 to 3.75 inches. Caution: Proper tether length is necessary to ensure proper liquid level control and maximum life of product.

Step 7

Feed float switch cord(s) along with pump cord through the cord grommet opening.

Step 8

Install switch module to basin and secure with six (6) bolts.

Step 9

Insert cords in cord grommet and install cord grommet into the switch module. Caution: Remove any cord slack that might potentially interfere with control float or optional alarm float operation.

Step 10

Connect switch and pump to power supply.

ECM (External Control Module) - Removal and Installation

Step 1

Disconnect pump and switch from power supply.

Step 2

Remove cord grommet from the switch access cover then separate the pump power cord from the grommet.

Step 3

Remove the six (6) bolts securing the switch module to the basin and remove. Feed pump cord through the cord grommet opening until the switch module is free.

Step 4

Feed pump cord through the cord grommet opening of the replacement ECM.

Step 5

Install ECM module and to basin and secure with six (6) bolts.

Step 6

Insert pump cords in cord grommet and install cord grommet into the switch module. Caution: Remove any cord slack that might potentially interfere with optional alarm float operation.

LIMITED WARRANTY

THIS WARRANTY SETS FORTH THE COMPANY'S SOLE OBLIGATION AND PURCHASER'S EXCLUSIVE REMEDY FOR DEFECTIVE PRODUCT.

Franklin Electric Company, Inc. and its subsidiaries (hereafter "the Company") warrants that the products accompanied by this warranty are free from defects in materials or workmanship of the Company that exist at the time of sale by the Company and which occur or exist within the applicable warranty period. Any distributor, sub-distributor, recipient, end-user and/or consumer agrees that by accepting the receipt of the products, the distributor, sub-distributor, recipient, end user and/or consumer expressly agrees to be bound by the terms of the warranty set forth herein.

I. Applicable Warranty Period

The products accompanied by this warranty shall be covered by this Limited Warranty for a period of 24 months from the date of original purchase by the consumer. In the absence of suitable proof of purchase date, the warranty period of this product will begin to run on the product's date of manufacture.

II. Instructions Applicable to this Limited Warranty

1. Consumers wishing to submit a warranty claim must return the products accompanied by this warranty to the point of purchase for warranty consideration.
2. Upon discovery of a defect, any personal injury, property damage or any other type of resulting damage, if applicable, shall be reasonably mitigated to the extent possible.
3. At its discretion, the Company may inspect products either at its facilities or in the field, and after determination of a warranty claim, will, at its option, repair or replace defective parts. Repaired or replaced parts will be returned freight prepaid by the Company.
4. This warranty policy does not cover any labor or shipping charges. The Company shall not be liable for any costs or charges attributable to any product testing, maintenance, installation, repair or removal, or for any tools, supplies, or equipment needed to install, repair, or remove any product.

III. Limitations Applicable to this Limited Warranty

THIS WARRANTY DOES NOT APPLY TO ANY OF THE FOLLOWING:

1. Any product that is not installed, applied, maintained, and used in accordance with the Company's published instructions, applicable codes, applicable ordinances and/or with generally accepted industry standards.
2. Any product that has been subject to misuse, misapplication, neglect, alteration, accident, abuse, tampering, acts of God (including lightning), acts of terrorism, acts of war, fire, improper storage or installation, improper use, improper maintenance or repair, damage or casualty, or to an excess of the recommended maximums as set forth in the product instructions.
3. Any product that is operated with any accessory, equipment, component, or part not specifically approved by the Company.
4. Use of replacement parts not sold by the Company, the unauthorized addition of non-Company products to other Company products, and the unauthorized alteration of Company products.
5. Products damaged by normal wear and tear, normal maintenance services and the parts used in connection with such service, or any other conditions beyond the control of the Company.
6. Any product that has been used for purposes other than those for which it was designed and manufactured.
7. Any use of the product where installation instructions and/or instructions for use were not followed.

The Company reserves the right at any time, and from time to time, to make changes in the design and/or improvements upon its product without thereby imposing any obligation upon itself to make corresponding changes or improvements in or upon its products already manufactured and/or previously sold. The Company further reserves the right to substitute parts or components of substantially equal quality in any warranty service required by operation of this Limited Warranty.

This written Limited Warranty is the entire warranty authorized and offered by the Company. There are no warranties or representations beyond those expressed in this document.

THIS WARRANTY AND REMEDY IS IN LIEU OF ALL OTHER WARRANTIES AND REMEDIES INCLUDING WITHOUT LIMITATION, WARRANTIES OF MERCHANTABILITY AND/OR FITNESS FOR A PARTICULAR PURPOSE, WHICH ARE HEREBY SPECIFICALLY DISCLAIMED AND EXPRESSLY EXCLUDED. CORRECTION OF NON-CONFORMITIES, IN THE MANNER AND FOR THE PERIOD OF TIME AS SET FORTH ABOVE, SHALL CONSTITUTE FULFILLMENT OF ALL LIABILITY OF THE COMPANY TO THE PURCHASER WHETHER BASED ON CONTRACT, NEGLIGENCE, OR OTHERWISE.

THE COMPANY SHALL NOT BE LIABLE FOR INCIDENTAL, CONSEQUENTIAL OR SPECIAL DAMAGES SUCH AS, BUT NOT LIMITED TO:

DAMAGE TO OR LOSS OF OTHER PROPERTY OR EQUIPMENT, LOSS OF USE OF EQUIPMENT, FACILITIES OR SERVICE, LOSS OF PROFIT OR SALES, COST OF PURCHASES OR REPLACEMENT GOODS, CLAIMS OF CUSTOMERS OF THE PURCHASER, FAILURE TO WARN AND/OR INSTRUCT, LOSS OF OTHER PRODUCTS, OR COSTS OF ENVIRONMENTAL REMEDIATION, OR DIMINUTION IN PROPERTY VALUE. THE REMEDIES OF THE PURCHASER SET FORTH HEREIN ARE EXCLUSIVE, AND THE LIABILITY OF THE COMPANY SHALL NOT, EXCEPT AS EXPRESSLY PROVIDED HEREIN, EXCEED THE PRICE OF THE PRODUCTS UPON WHICH SUCH LIABILITY IS BASED. DAMAGES AS SET FORTH IN THIS PARAGRAPH SHALL BE REASONABLY MITIGATED TO THE EXTENT POSSIBLE. THIS PARAGRAPH SHALL ALSO APPLY TO ALL DAMAGES RESULTING FROM CONDITIONS SET FORTH IN SECTION III ABOVE AND (1) DEFECTS IN PRODUCT PROTOTYPES OR REPLACEMENT PART PROTOTYPES THAT HAVE NOT BEEN PUT INTO PRODUCTION, CIRCULATED, AND SOLD BY THE COMPANY, AND/OR (2) DEFECTS THAT WERE NOT FOUND AT THE TIME OF SALE DUE TO SCIENTIFIC AND TECHNOLOGICAL REASONS.

This Limited Warranty gives you specific legal rights. You may have other rights, which vary according to the applicable laws and regulations. Where any term of this warranty is prohibited by such laws, it shall be null and void, but the remainder of this warranty shall remain in full force and effect.

DISCLAIMER: Any oral statements about the product made by the seller, the Company, the representatives or any other parties, do not constitute warranties, shall not be relied upon by the user, and are not part of the contract for sale. Seller's and the Company's only obligation, and buyer's only remedy, shall be the replacement and/or repair by the Company of the product as described above. Before using, the user shall determine the suitability of the product for his intended use, and user assumes all risk and liability whatsoever in connection therewith.

NOTES:

For technical assistance, please contact. 800.701.7894
Pour l'aide technique, entrez s'il vous plaît en contact 800.701.7894
Para la ayuda técnica, por favor póngase en contacto. 800.701.7894

www.littlegiant.com
lgnet@fele.com

LittleGIANT®

Franklin Electric Co., Inc.
Oklahoma City, OK 73157-2010
Phone: 1.800.701.7894
Fax: 1.405.228.1561



Form 998749
Rev. 0
03.15