

## Drake® WASHLET®+ S500e Close Coupled Toilet - 1.28 and 0.8 GPF

### FEATURES

- Concealed supply connection for seamless installation
- DYNAMAX TORNADO FLUSH® utilizes 360° cleaning power to reach every part of the bowl
- High-efficiency dual flush 1.28 & 0.8 GPF (4.8 & 3.0 LPF)
- CEFIONTECT® ceramic glaze prevents debris and mold from sticking to ceramic surfaces
- Design of the bowl reduces water flow resistance resulting in a quieter flushing sound
- 12" Rough-in
- Chrome plated trip lever
- Elongated front bowl and WASHLET+ S500e and tank set
- EWATER+® auto-cleans wand and bowl
- On-demand remote function cleans wand with EWATER+
- PREMIST of bowl before each use
- Remote control operated
- Auto Flush available as upgrade
- Semi-concealed trapway

### MODELS & COMPONENTS

- **MW7463046CEMGA (#01)**  
With CEFIONTECT ceramic glaze, WASHLET+ S500e with contemporary design and Auto Flush
  - **CT746CUGT40**  
Elongated bowl with CEFIONTECT
  - **ST746EMA**  
Tank and cover only
  - **SW3046AT40**  
WASHLET+ S500e
  - **THU765**  
Auto Flush Kit
- **MW7463046CEMG (#01)**  
Same as MW7463046CEMGA without Auto Flush
  - **CT746CUGT40**  
Elongated bowl with CEFIONTECT
  - **ST746EMA**  
Tank and cover only
  - **SW3046AT40**  
WASHLET+ S500e

#### Optional Components

- **THU773#01**  
Trip Lever - Cotton
- **THU773#PN**  
Trip Lever - Polished Nickel
- **THU773#BN**  
Trip Lever - Brushed Nickel

### COLORS/FINISHES

- #01 Cotton



- **DYNAMAX TORNADO FLUSH**
- **CEFIONTECT**
- **EWATER+**
- **Auto Flush**

### PRODUCT SPECIFICATION

The two-piece high-efficiency DYNAMAX TORNADO FLUSH toilet shall be dual flush 1.28 GPF/0.8 GPF. Toilet shall be 12" rough-in. Toilet shall have CEFIONTECT ceramic glaze. Toilet shall have elongated front bowl and Polished Chrome trip lever. Toilet shall be TOTO Model MW7463046CEMG\_\_\_\_\_.

See SW3046AT40 Specification Sheet for details on included WASHLET.

### CODES/STANDARDS

- Meets and exceeds ASME A112.19.2/CSA B45.1, ASME A112.19.14
- Certifications: IAPMO(cUPC®), EPA WaterSense, State of Massachusetts, and others
- Code Compliance: UPC, IPC, NSPC, NPC Canada, and others
- Legislative Compliance: California Green Building Code, City of Los Angeles Water Efficiency Ordinance, and others
- Complies with CA Prop 65 warning requirements



# MW7463046CEMG(A)

## Drake® WASHLET®+ S500e Close Coupled Toilet - 1.28 and 0.8 GPF

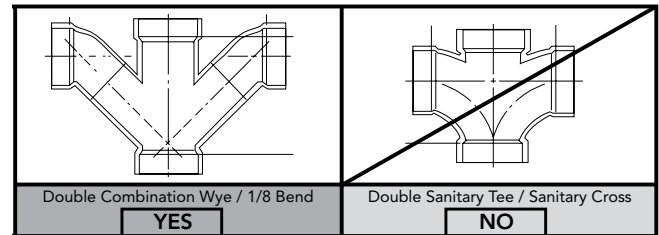
### SPECIFICATIONS

<b>Water Use</b>	1.28 & 0.8 GPF (4.8 & 3.0 LPF)
<b>Flush System</b>	DYNAMAX TORNADO FLUSH®
<b>Min. Water Pressure</b>	8 psi (Flowing)
<b>Water Surface</b>	5-5/8" x 4-1/8"
<b>Trap Diameter</b>	2-1/2"
<b>Rough-in</b>	12"
<b>Trap Seal</b>	2-1/8"
<b>Warranty</b>	One Year Limited Warranty
<b>Material</b>	Vitreous China
<b>Shipping Weight</b>	CT746CUGT40 66 lbs. ST746EMA 35 lbs.
<b>Shipping Dimensions</b>	CT746CUGT40 18-3/4" L x 10-1/2" W x 18-1/8" H ST746EMA 18-3/4" L x 8-3/8" W x 16" H

See SW3046AT40 Specification Sheet for details on included WASHLET.

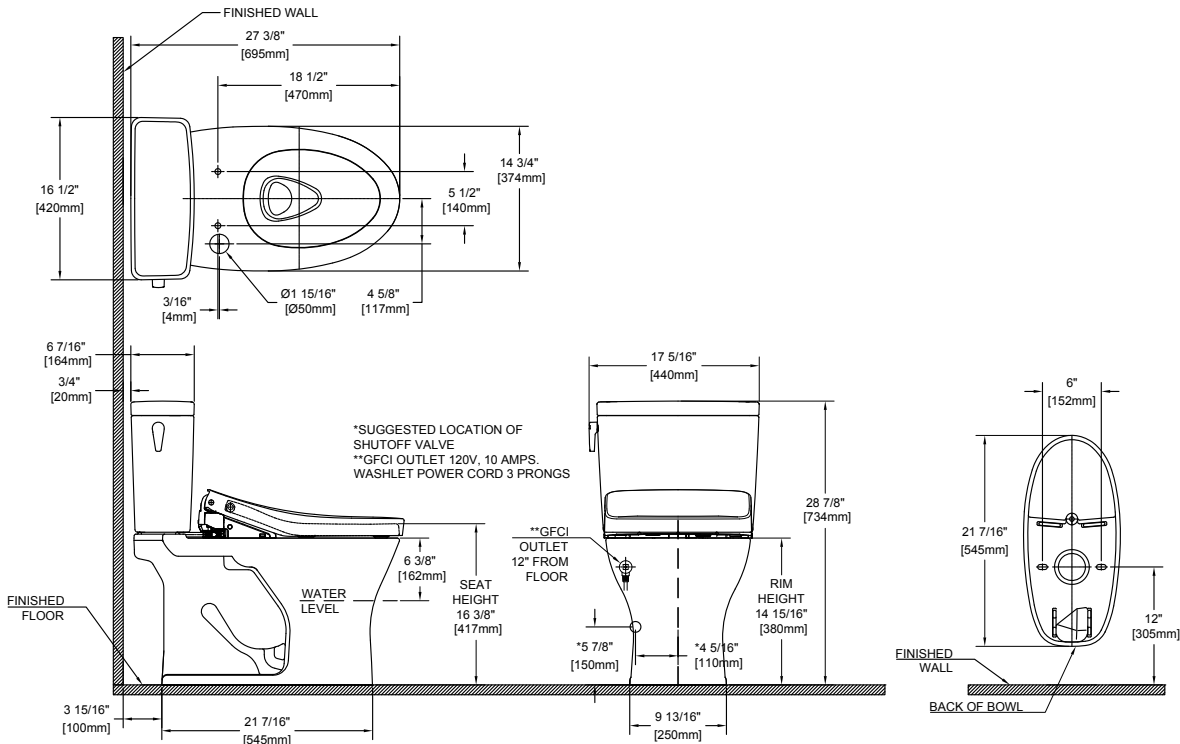
### INSTALLATION NOTES

Back-to-Back Toilet Installations:  
TOTO recommends the use of a nationally listed, double sanitary tee-wye only, in vertical waste stacks, in accordance with the stipulations noted in the majority of nationally recognized plumbing codes.



To maintain adequate wall gap between the back of the tank and wall, mount the floor flange at a nominal 12" rough-in distance.

### DIMENSIONS



**TOTO®**

These dimensions and specifications are subject to change without notice