



M12™ PIPELINE LOCATOR
THE SIMPLEST LOCATING EXPERIENCE



2580-21 Contents:

- (1) M12™ Pipeline Locator
- (1) M12™ 1.5AH Battery (48-59-2401)
- (1) M12™ Charger (48-59-2401)



Nothing but **HEAVY DUTY.**

- **Overview/Target Users & Applications**
- **Why Milwaukee®?**
- **Launch Collateral**



M12™ PIPELINE LOCATOR

Who Uses Them?



**MECHANICAL CONTRACTORS
(SERVICE DIVISION)**



FACILITY MAINTENANCE



**RESIDENTIAL / COMMERCIAL
PLUMBING COMPANIES**



**DRAIN CLEANING
PROFESSIONALS**



DRAIN CLEANING FRANCHISES



SEPTIC & SEWER CONTRACTORS

SEWER MAINTENANCE PROCESS



CLEAR



Drain Cleaning



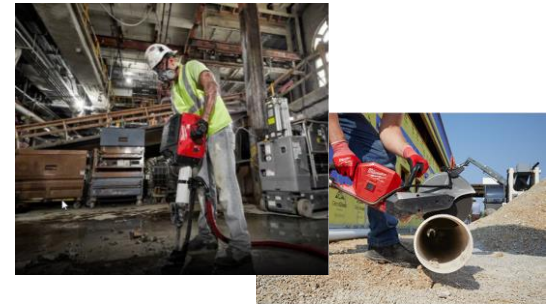
INSPECT & LOCATE



**Plumbing
Locating**



REPAIR/REPLACE



**Demo/
Pipe Cutting**

Start to Finish Milwaukee Opportunity

WHY PLUMBING LOCATORS ARE USED

CAMERA SONDE LOCATING

*LOCATES SINGULAR POINT
IN DRAIN LINE THAT NEEDS
REPAIR*



OR

LINE TRACING

*MAP OUT DRAIN SYSTEMS
OR ACCELERATE CAMERA
SONDE LOCATING*



LOCATORS PROVIDE ACCURATE READINGS OF UNDERGROUND DRAIN LINES



Nothing but **HEAVY DUTY.**

- Overview/Target Users & Applications
- Why Milwaukee®
- Launch Collateral

ROUGH IN



INSTALL



MAINTENANCE



DEMOLITION



FASTEST GROWING BRAND SINCE 2016

MILWAUKEE PIPELINE INSPECTION AND LOCATION





M12™ PIPELINE LOCATOR

Why Milwaukee®?

ACCURACY

EASE OF USE

VERSATILITY

USERS NEED A LOCATOR THAT PINPOINTS FINDINGS ACCURATELY AND RELIABLY

PROBLEM

SOLUTION

LIMITING FALSE PEAKS

- Users want a locator that locates the desired frequency without being thrown off by other signals in the area.



ACCURATELY READING DEPTH

- Users need a locator that can accurately locate the depth of the sonde, no matter the orientation of the sonde



CONFIRMING CALIBRATION

- Users need a locator that can detect when the tool has lost calibration

PRECISE, ACCURATE READINGS

- Two 3D antennas accurately detect transmitted frequencies while filtering out false peak readings



AUTOMATIC DEPTH READINGS OF TILTED SONDES

- Provides automatic depth reading no matter the orientation of the sonde

CALIBRATION TEST

- On-board calibration test provides confirmation that the locator is operating properly



ACCURATE AND RELIABLE LOCATING GUIDANCE

ACCURACY

EASE OF USE

VERSATILITY

USERS WANT A LOCATOR THAT THEY CAN PICK UP AND USE IMMEDIATELY

PROBLEM

STREAMLINED LOCATING PROCESS

- Users want a locator that directs them towards the point of interest without unnecessary steps



LOCATING CONFIRMATION

- Users want a locator that directs them to the point of interest and confirms the location as quickly as possible



SOLUTION

INSTANT AUTOMATIC GUIDANCE, ELIMINATE GUESS & CHECK

- Arrow points in the direction of the camera sonde immediately upon start up
- Compass icon directs to the path of the energized line



DIRECT SONDE PINPOINTING

- Once the sonde is pinpointed, sonde icon appears on screen confirming its location



INSTANT GUIDANCE, INTUITIVE USE



M12™ PIPELINE LOCATOR

Why Milwaukee®?

ACCURACY

EASE OF USE

VERSATILITY

USERS WANT A LOCATOR THAT ADAPTS TO JOB CONDITIONS

PROBLEM

CLEAR VISUAL GUIDANCE

- Users want a screen that is easy to read in direct sunlight or dimly lit areas



SURVIVING HARSH JOBSITE CONDITIONS

- Users want a locator that is built to withstand the water and debris found on a sewer call



FAST ACCESS TO POWER

- Users want a locator that provides extended runtime for longer jobs and allows them to recharge batteries.

SOLUTION

OPTIMAL VIEWING

- A 4.3" daylight readable screen and LED backlit buttons provide crisp easy viewing outdoors and in dimly lit areas



IP65 RATED

- Battery door, impact rated display, and rubber overmold provide maximum durability for harsh conditions

RECHARGEABILITY

- M12™ battery provides over 9 hours of runtime per charge and eliminates the need for repeated purchases of disposable batteries



THE BEST OUTDOOR LOCATING EXPERIENCE

Track

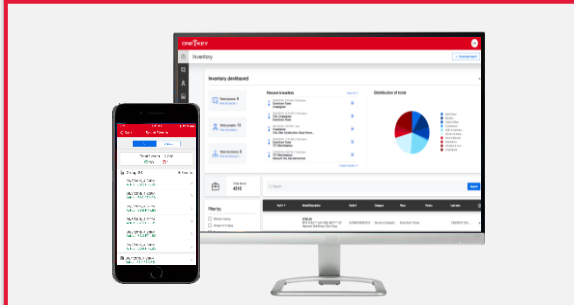


Track Tools Anywhere

- Locate tools using embedded Bluetooth technology
- Take advantage of the industry's largest tracking network
- Receive notifications when missing tools are found



Manage

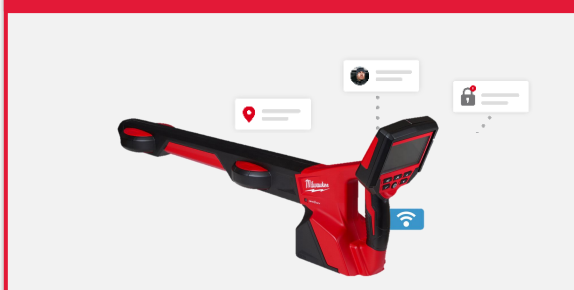


Manage Important Tool Information

- Upload purchase information
- Store service documents
- Set recurring service reminders

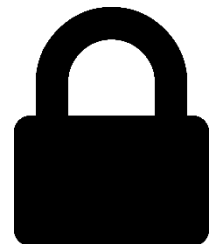


Secure



Secure Lost or Stolen Tools

- Shut down tools, preventing unwanted use
- Remotely lock out lost or stolen tools when they come in range of the One-Key network
- Receive notifications when tools become locked





M12™ PIPELINE LOCATOR

Competitive Landscape



Brand	Milwaukee	Ridgid	General
Model	M12™ Pipeline Locator	NaviTrack Scout Locator	Gen Eye Hot Spot Locator
Retail	\$2,499	\$1,400-\$1,600	\$1,900-\$2,100
Locating Icons	Directional Arrow	Poles	Icons
Screen Size	4.3	1.5"	3"
Color Screen	YES	No	No
Battery Platform	M12™	Alkaline	Alkaline
IP Rating	IP 65	N/A	IP 65
Calibration Test	YES	No	No
Tracking & Security	YES	No	No



M12™ PIPELINE LOCATOR

Tool Walkaround

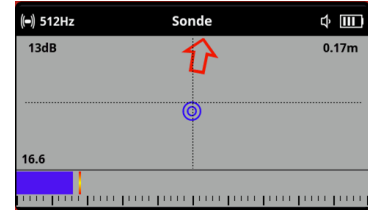


2 3D ANTENNAS

PROVIDE OMNIDIRECTIONAL LOCATING

4.3" COLOR LCD DISPLAY

FOR CRISP, CLEAR VIEWING IN DIRECT
SUNLIGHT



ACTIVE GUIDING INDICATORS

ARROW ICON POINTS IN THE
DIRECTION OF THE SONDE

ONE-KEY™ TRACKING & SECURITY

TRACK AND MANAGE INVENTORY. LOCK
OUT TOOL TO PREVENT THEFT

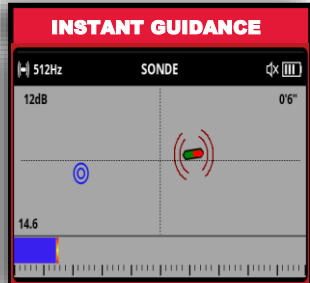


LED BACKLIT BUTTONS

BETTER VISIBILITY IN DIMLY LIT AREAS

SEALED BATTERY DOOR

IP 65 RATING FOR PROTECTION AGAINST
HARSH JOBSITE CONDITIONS



- **Directional Icons Eliminate Guess & Check**
 - Guiding Arrow Points Toward Sonde Upon Start Up
 - On-Screen Sonde Icon Confirms Sonde's Exact Location
 - Line Trace Mode: Compass Icon Follows Energized Line
- **Dual Antennas Increase Sensitivity for Precise Locating**
 - 2 3D Antennas Minimize False Peaks
 - Onboard Controls: Quickly Switch between locating modes
 - Calibration Test Monitors Tool's Accuracy
- **Read Signals Clearly on 4.3" LCD Display**
 - Daylight Readable Screen for Optimal Outdoor Viewing
 - IP65 Rated: Survives Harsh Jobsite Conditions
 - One Key™ Tracking, Security, & Inventory Management





Nothing but **HEAVY DUTY.**

- Overview/Target Users & Applications
- Why Milwaukee®
- Launch Collateral



M12™ PIPELINE LOCATOR

Pricing & Set-Up Info

Pricing

Item#	Product Name	UPC (DPL)	List Price (DPL)	50% Off Cost (DPL)	HD Cost (DPL)	Suggested Retail	iMAP
2580-21	M12™ Pipeline Locator Kit	045242574353	\$ 4,444.43	\$ 2,222.21	\$ 1,999.99	\$ 2,499.99	\$ 2,499.99

Shipping

Buy PK QTY	Product Length (in)	Product Height (in)	Product Width (in.)	Product Weight (lbs)	Package Height (in) (DPL)	Package Width (in.) (DPL)	Package Depth (in) (DPL)	Package Weight (lbs) (DPL)	Country of Origin Name	Harmonization Code
1	32.5"	11.38"	4.88"	5.25"	14.72"	34.09"	6.22"	17	CHINA	8467290090

MILWAUKEE SEWER & DRAIN MAINTENANCE

