

ROOF VENTS

356 6" Plastic RoofVent

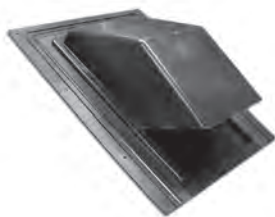
(BLACK)

pack qty: 1
package: single pack

INCLUDES:

1 - roof vent

- Damper & screen



OTHER SIZES AVAILABLE:

ITEM	SIZE	QTY	PACKAGE
355	5"	1	single pack
357	7"	1	single pack
358	8"	1	single pack
359	10"	1	single pack

Note: See page 20 for 3" and 4"

107 Aluminum Roof Vent

pack qty: 1
package: single pack

- Fits ducts up to 10" round & 3 1/4" x 10" ducts
- Damper & screen

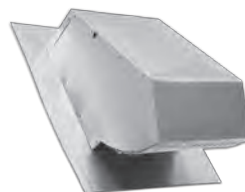


INCLUDES:
1 - roof vent

116 Aluminum Roof Vent

pack qty: 1
package: single pack

- Fits up to 7" round ducts
- Damper & screen



INCLUDES:
1 - roof vent



(#1780)

WASHING MACHINE TRAYS

Lambro manufactures two sizes of washing machine trays fitting under standard or oversized washing machines. Our trays fit under front or top load and double stacked washing machines. The trays are non breakable and include a drain fitting. Verify and comply with all local building codes.

TRAYS

1780 29" x 31" Standard Washer Tray

(1 1/2" DEPTH)

pack qty: 6
package: retail label &
display tray

- Protects floors from scuffs and overflow
- For use with standard size washing machines



INCLUDES:

1 - standard washer tray
1 - 1" drain fitting / washer / nut

1781 31" x 36" Oversized Washer Tray

(2 1/2" DEPTH)

pack qty: 2
package: retail label &
display tray

- Protects floors from scuffs and overflow
- For use with oversized washing machines



INCLUDES:

1 - oversized washer tray
1 - 1" drain fitting / washer / nut