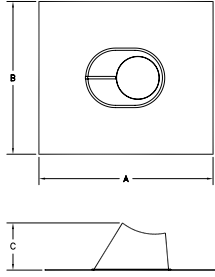
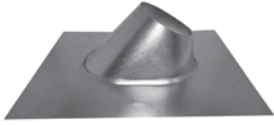




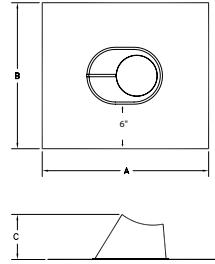
TYPE B GAS VENT ~ ROUND

FLASHINGS



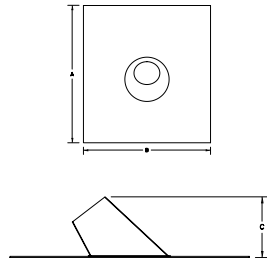
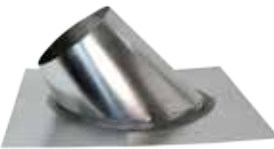
Standard Flashing - Round

- Used where the vent passes through the roof
- Fits flat to 6/12 pitch roof
- Built with double-seamed construction for protection from leakage



6" Skirt Standard Flashing - Round

- A standard flashing with a 6" skirt



Steep Pitch Flashing - Round

- Handles roof pitches of 6/12 to 12/12

PART #	SIZE	A	B	C
3EF	3"	14 3/4"	12 1/2"	4"
4EF	4"	16 3/8"	13 3/4"	5"
5EF	5"	17 13/16"	15"	4 9/16"
6EF	6"	18 3/4"	16 1/8"	6"
7RF	7"	20"	17 7/8"	6 5/8"
8RF	8"	21"	21"	6 5/8"
9RF	9"	22"	22"	6 5/8"
10RF	10"	24 1/8"	24 1/8"	7 1/8"
12RF	12"	25 1/16"	25 1/16"	7 5/8"
14F	14"	28"	28"	9 1/4"
16F	16"	30 1/8"	30 1/8"	9 1/2"
18F	18"	31 1/2"	31 1/2"	10 1/2"
20F	20"	34"	34"	11"
22F	22"	34 1/2"	34 1/2"	12"
24F	24"	37"	37"	12 1/2"
26F	26"	43"	43"	12"
28F	28"	45"	45"	12"
30F	30"	46"	46"	13"

PART #	SIZE	A	B	C
3EFFU	3"	20 1/4"	15 1/2"	4"
4EFFU	4"	20 1/4"	18"	5"
5EFFU	5"	24"	19"	4 9/16"
6EFFU	6"	24"	19"	6"
7RFFU	7"	25 1/16"	21 1/2"	6 5/8"
8RFFU	8"	25 1/16"	25 1/16"	6 5/8"
9RFFU	9"	26"	26"	6 5/8"
10RFFU	10"	29"	27"	7 1/8"
12RFFU	12"	29"	29"	7 5/8"
14RFFU	14"	32"	32"	8 1/8"

PART #	SIZE	A	B	C
3EF12	3"	17 7/8"	15"	6 1/2"
4EF12	4"	17 7/8"	15"	6 13/16"
5EF12	5"	22 5/8"	17"	7 1/2"
6EF12	6"	22 5/8"	17"	8"
7RF12	7"	21 13/16"	21 13/16"	8 7/8"
8RF12	8"	23 1/8"	23 1/8"	9 1/2"