

BECAUSE *JUST ADD WATER* IS PRETTY MUCH THE INSTRUCTIONS FOR A WONDERFUL LIFE.

Thank you for buying an American Standard faucet.

We're so grateful you did, and you will be too. Because faucets don't just bring us water—they're called upon to clean up brownie pans, luxuriated under by sleepy not-morning-people, and spit on by teeth-brushing kids. How do we know? Just like you, we've lived with that same beautiful chaos called life for almost 150 years. We believe that while every home should appreciate in value, we never forget the sentimental value that grows from enjoying life in the heart of home—your kitchen and bath. That's why we love your stories and ideas; they help us innovate with products that make your life easier.

NOTE TO INSTALLER: Please give this manual to the customer after installation.

To learn more about American Standard Selectronic® Products visit our website at:
www.americanstandard-us.com or e-mail us at: sensor@lifix.com

For Parts, Service, Warranty or other Assistance,
please call (844) CRT-TEAM / (844) 278-8326 (In Canada: 1-800-387-0369)
(In Toronto Area only: 1-905-306-1093)



Or, visit **americanstandard-us.com/bathroom/sink-faucets**
to watch video, view/download installation manuals
or learn more about your product.

Have a question or need help on install?

For questions or help on installation call us at **855-815-0004**.

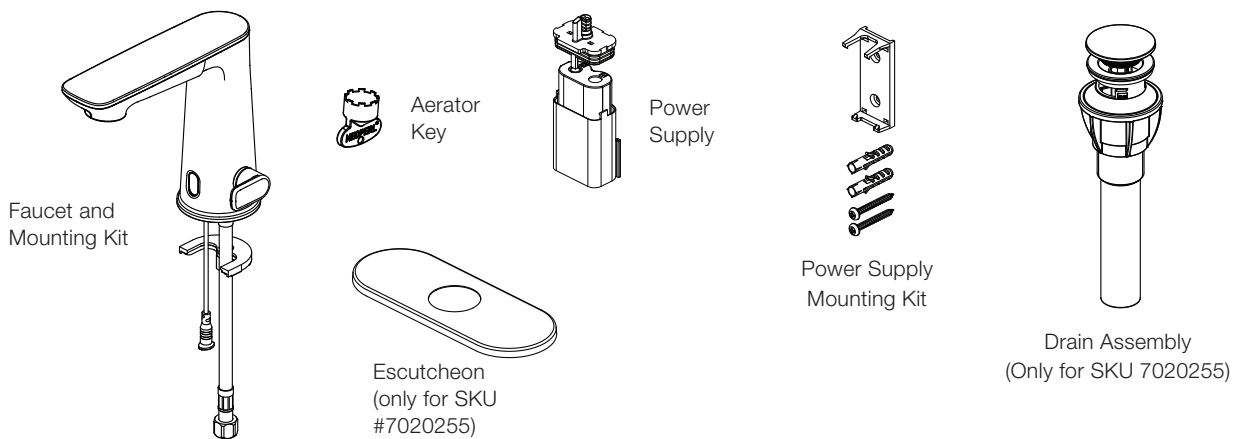
OWNERS MANUAL

American Standard Touchless Lavatory Faucet

7020105/7020205/7020255

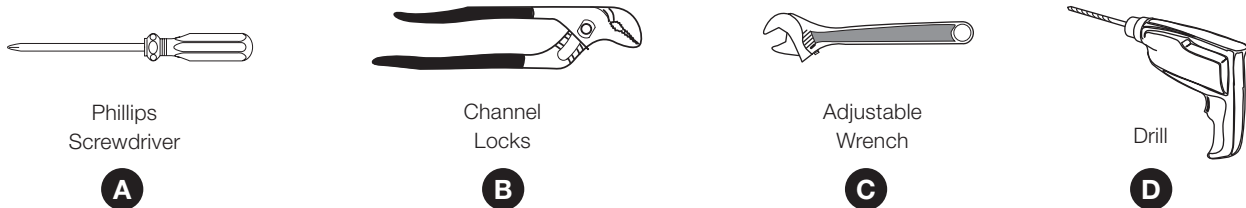


INSIDE THE BOX



RECOMMENDED TOOLS

Installation steps will indicate which tools should be used with associated letter



BEFORE INSTALLING YOUR FAUCET

Turn off hot and cold water supplies before beginning.

Image shown may vary from product purchased.

American Standard

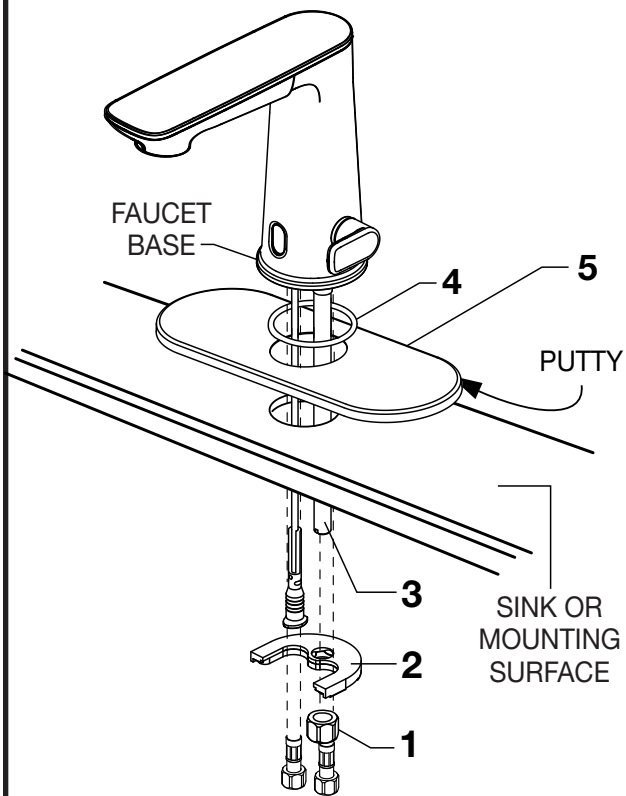
INSTALLATION INSTRUCTIONS

1A

INSTALL WITH ESCUTCHEON



Turn off hot and cold water supplies before beginning.



- Insert Supply Line(s), Power Chord, and Mounting Shank through ESCUTCHEON (5) and the counter top.
- Push WASHER (2) on to MOUNTING SHANK (3).
- Thread NUT (1) on to MOUNTING SHANK (3).
- Ensure that O-RING (4) is properly seated between the faucet base and the ESCUTCHEON (5) before tightening NUT (1).

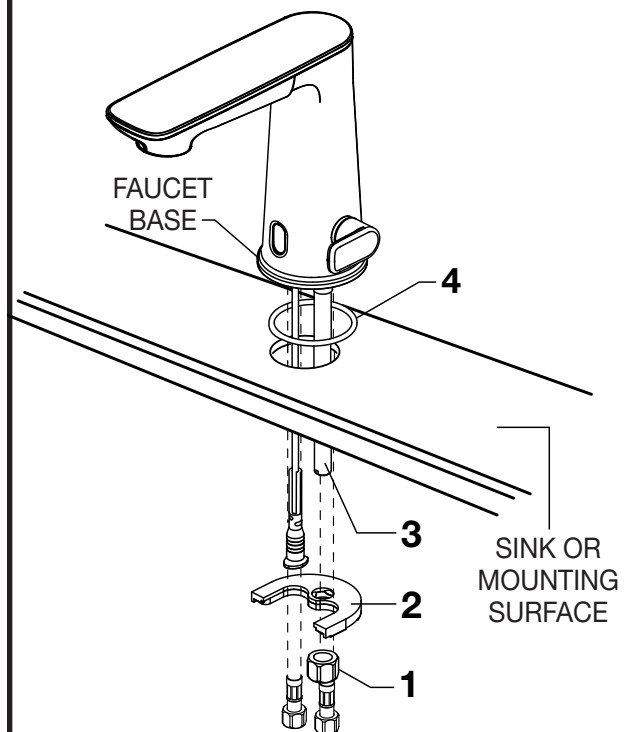
A

1B

INSTALL WITHOUT ESCUTCHEON



Turn off hot and cold water supplies before beginning.



- Insert Supply Lines, Power Chord, and Mounting Shank through the counter top.
- Push WASHER (2) on to MOUNTING SHANK (3).
- Thread NUT (1) on to MOUNTING SHANK (3).
- Ensure that O-RING (4) is properly seated between the faucet base and the counter top before tightening NUT (1).

A

American Standard

2

MAKE WATER SUPPLY CONNECTIONS



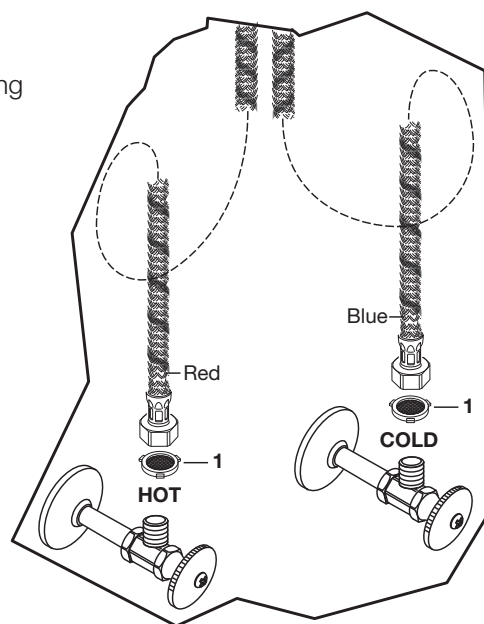
Turn off hot and cold water supplies before beginning.

Note: SKU 7020105 only has one supply hose for connecting to the cold water supply or an external mixing valve.

- Ensure that filter screen (1) is properly seated in the hose nut of each supply line.
- Connect flexible supply hoses directly to wall supplies. Connection on fitting supplies are 3/8" compression. Connect the supply hose with the red label to the Hot wall supply. Connect the supply hose with the blue label to the Cold wall supply. Use an adjustable wrench to tighten connections. Do not over tighten.

* Faucet supplies are 24" long from faucet base.

- **Note:** If additional supply length is required, installer must purchase additional parts separately.
- **Important:** If supply hoses are too long, loop as illustrated to avoid kinking.



C

3

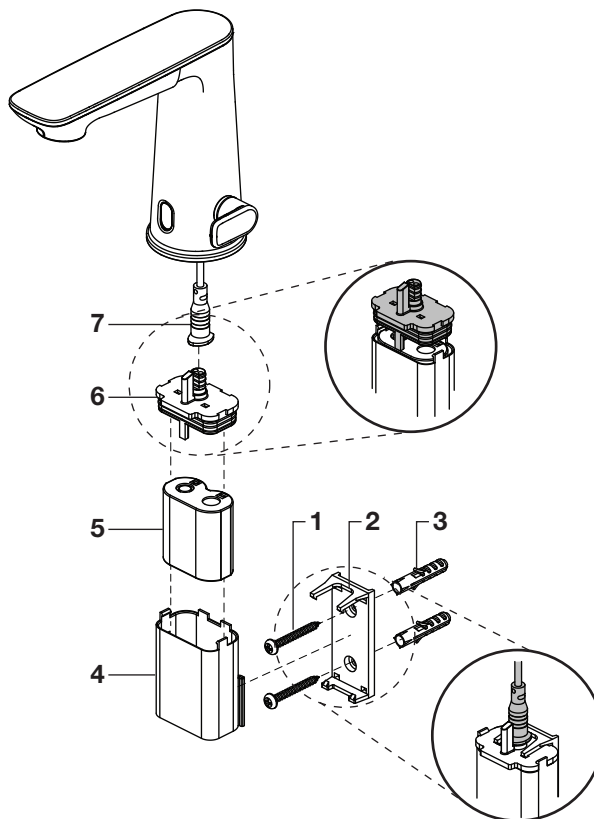
INSTALL BATTERY PACK

- Secure the MOUNTING BRACKET (2) with the provided ANCHORS (3) and SCREWS (1) below the counter top.

Note: 1/4" drill bit can be used for drywall anchor pilot holes.

Note: Ensure that the location of the MOUNTING BRACKET (2) is close enough to the faucet so that the POWER SUPPLY WIRE (7) can reach the battery pack.

- Insert the BATTERY (5) in to the BATTERY PACK (4) and push the LID (6) on to the BATTERY BACK (4).
- Connect the POWER SUPPLY WIRE (7) to the LID (6).
- Secure the BATTERY PACK (4) on to the MOUNTING BRACKET (2).
- Remove protective film from sensor eye when installation is complete.

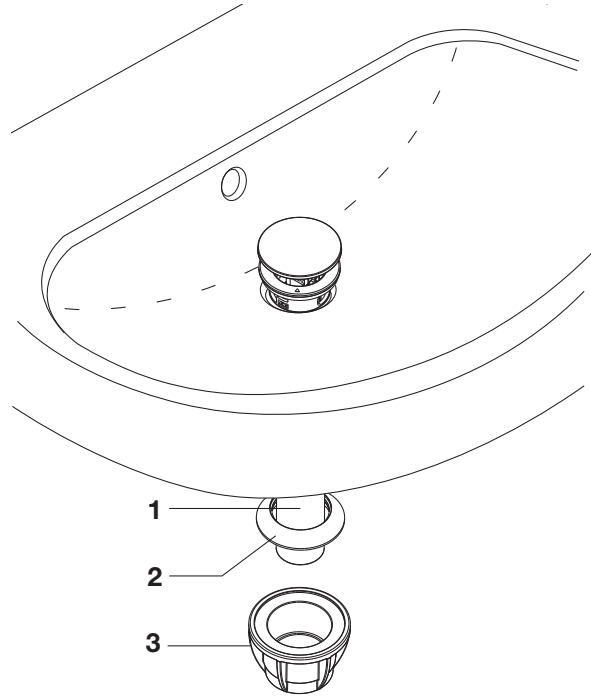


D

4

INSTALL DRAIN

- Insert DRAIN (1) through the sink basin.
- Slide RUBBER GASKET (2) on to DRAIN (1) against the bottom of the sink basin.
- Secure RUBBER GASKET (2) by threading NUT (3) on to DRAIN (1).

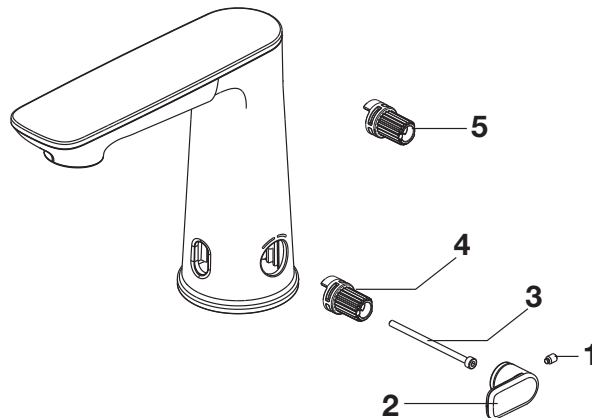


5

ADJUST HOT LIMIT SAFETY STOP

Note: This step is optional and only applicable to models with the water mixing handle.

- Remove Set Screw (1).
- Slide Handle (2) off of Adapter (4).
- Unthread Screw (3).
- Remove Adapter (4) and replace with the Hot-Limit Adapter (5).
- Reinstall Screw (3), Handle (2), and Set Screw (1).



6

CARE INSTRUCTIONS

DO: SIMPLY RINSE THE PRODUCT CLEAN WITH CLEAR WATER. DRY WITH A SOFT COTTON FLANNEL CLOTH. **DO NOT:** DO NOT CLEAN THE PRODUCT WITH SOAPS, ACID, POLISH, ABRASIVES, HARSH CLEANERS, OR A CLOTH WITH A COARSE SURFACE.

TELL US WHAT YOU THINK!

★ Please leave us a product review or story at **americanstandard.com/reviews**



Happy I purchased this faucet

08/22/2019 00:04:41 CDT American Standard [Kitchen Faucets](#) [Xavier SelectFlo Pull-Down Kitchen Faucet](#)

I enjoy the SelectFlo pull-down kitchen faucet with three spray patterns. It's a great fit, finish and overall quality has been excellent.

Register your warranty and sign up for an idea-filled newsletter at **americanstandard.com/warranty**.

Find installation videos at **youtube.com/americanstandard**.



SHARE YOUR NEW PRODUCT!

Tag us **@american_standard** on Instagram and show us how your new product looks.

≡ WANT MORE INFO?

For questions or help call us at **855-815-0004**, or visit **americanstandard.com**